

**MEXICO OIL CONSERVATION COMMISS**  
**WELL LOCATION AND ACREAGE DEDICATION PLAT**

Form  
 Supersedes C-128  
 Effective 1-1-65

All distances must be from the outer boundaries of the Section.

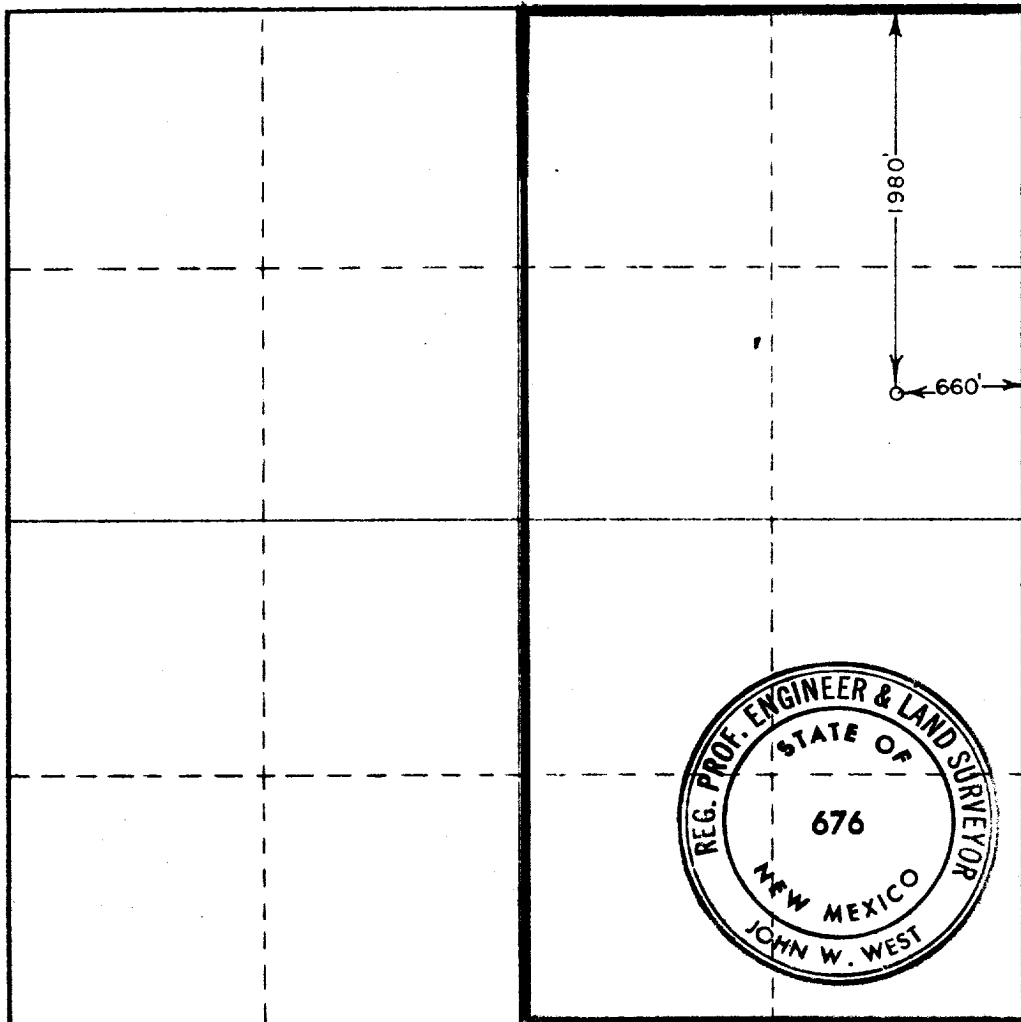
Operator <b>CITIES SERVICE OIL CO.</b>			Lease <b>GOVERNMENT "S"</b>		Well No. <b>1</b>
Unit Letter <b>H</b>	Section <b>3</b>	Township <b>20 SOUTH</b>	Range <b>28 EAST</b>	County <b>EDDY</b>	
Actual Footage Location of Well: <b>1980</b> feet from the <b>NORTH</b> line and <b>660</b> feet from the <b>EAST</b> line					
Ground Level Elev. <b>3280.5</b>	Producing Formation <b>Marathon Shale</b>		Pool <b>Undes. Winchester Area-Marathon</b>		Dedicated Acreage: <b>3.00</b> Acres

1. Outline the acreage dedicated to the subject well by colored pencil or hachure marks on the plat below.
2. If more than one lease is dedicated to the well, outline each and identify the ownership thereof (both as to working interest and royalty).
3. If more than one lease of different ownership is dedicated to the well, have the interests of all owners been consolidated by communitization, unitization, force-pooling, etc?

☐ Yes    ☐ No    If answer is "yes," type of consolidation \_\_\_\_\_

If answer is "no," list the owners and tract descriptions which have actually been consolidated. (Use reverse side of this form if necessary.) \_\_\_\_\_

No allowable will be assigned to the well until all interests have been consolidated (by communitization, unitization, forced-pooling, or otherwise) or until a non-standard unit, eliminating such interests, has been approved by the Commission.



**CERTIFICATION**

I hereby certify that the information contained herein is true and complete to the best of my knowledge and belief.

*E. Spaulder*

Name  
**Region Operation Manager**

Position  
**Cities Service Oil Company**

Company  
**August 9, 1973**

Date

I hereby certify that the location shown on this plat was plotted from field notes of actual survey made by \_\_\_\_\_ under my supervision. This location is true and correct to the best of my knowledge and belief.

**RECEIVED**  
**AUG 10 1973**  
**U.S. GEOLOGICAL SURVEY**  
**ARTERIA, NEW MEXICO**

Date Surveyed  
**AUGUST 3, 1973**

Registered Professional Engineer and/or Land Surveyor

*John W. West*

Certificate No. **676**

