

NEW MEXICO OIL CONSERVATION COMMISSION
WELL LOCATION AND ACREAGE DEDICATION PLAT

Form C-102
 Supersedes C-128
 Effective 1-1-65

All distances must be from the outer boundaries of the Section.

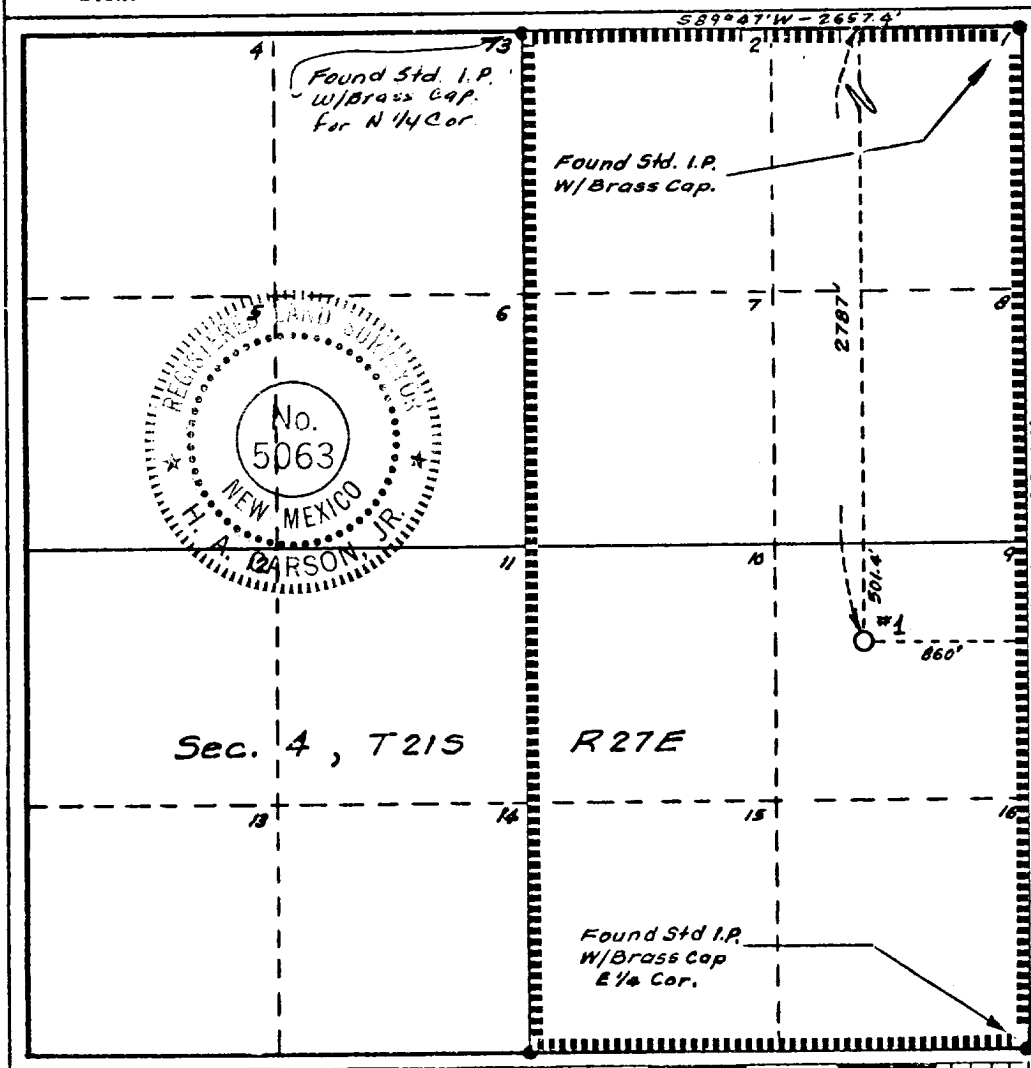
Operator Mobil Oil Corporation			Lease Federal 4 Com		Well No. 1
Unit Letter I	Section 4	Township 21S	Range 27E	County Eddy	
Actual Footage Location of Well: 2787 feet from the North line and 860 feet from the East line					
Ground Level Elev. 3183	Producing Formation Morrow	Pool Burton Flat		Dedicated Acreage: 298.91 Acres	

1. Outline the acreage dedicated to the subject well by colored pencil or hachure marks on the plat below.
2. If more than one lease is dedicated to the well, outline each and identify the ownership thereof (both as to working interest and royalty).
3. If more than one lease of different ownership is dedicated to the well, have the interests of all owners been consolidated by communitization, unitization, force-pooling, etc?

☒ Yes ☐ No If answer is "yes," type of consolidation Communitization

If answer is "no," list the owners and tract descriptions which have actually been consolidated. (Use reverse side of this form if necessary.) _____

No allowable will be assigned to the well until all interests have been consolidated (by communitization, unitization, forced-pooling, or otherwise) or until a non-standard unit, eliminating such interests, has been approved by the Commission.



CERTIFICATION

I hereby certify that the information contained herein is true and complete to the best of my knowledge and belief.

A. D. Bond

Name

A. D. Bond

Position

Proration Staff Asst.

Company

Mobil Oil Corporation

Date

August 31, 1973

RECEIVED

I hereby certify that the well location shown on this plat was obtained from field notes of actual surveys made by me or under my supervision, and that the same is true and correct to the best of my knowledge and belief.

H. A. Carson Jr.

Date Surveyed

August 28, 1973

Registered Professional Engineer
 and/or Land Surveyor

Harvey A. Carson, Jr.

Certificate No.