

N MEXICO OIL CONSERVATION COMMISS
WELL LOCATION AND ACREAGE DEDICATION PLAT

Form C-102
 Supersedes C-128
 Effective 1-1-65

All distances must be from the outer boundaries of the Section.

Operator Southern Union Production Company			Lease McKittrick		Well No. 1
Unit Letter H	Section 14	Township 22 South	Range 24 East	County Eddy	
Actual Footage Location of Well; <div style="display: flex; justify-content: space-between;"> 2390 feet from the North line and 830 feet from the East line </div>					
Ground Level Elev. 4025'	Producing Formation Morrow	Pool Undesignated		Dedicated Acreage; 320 Acres	

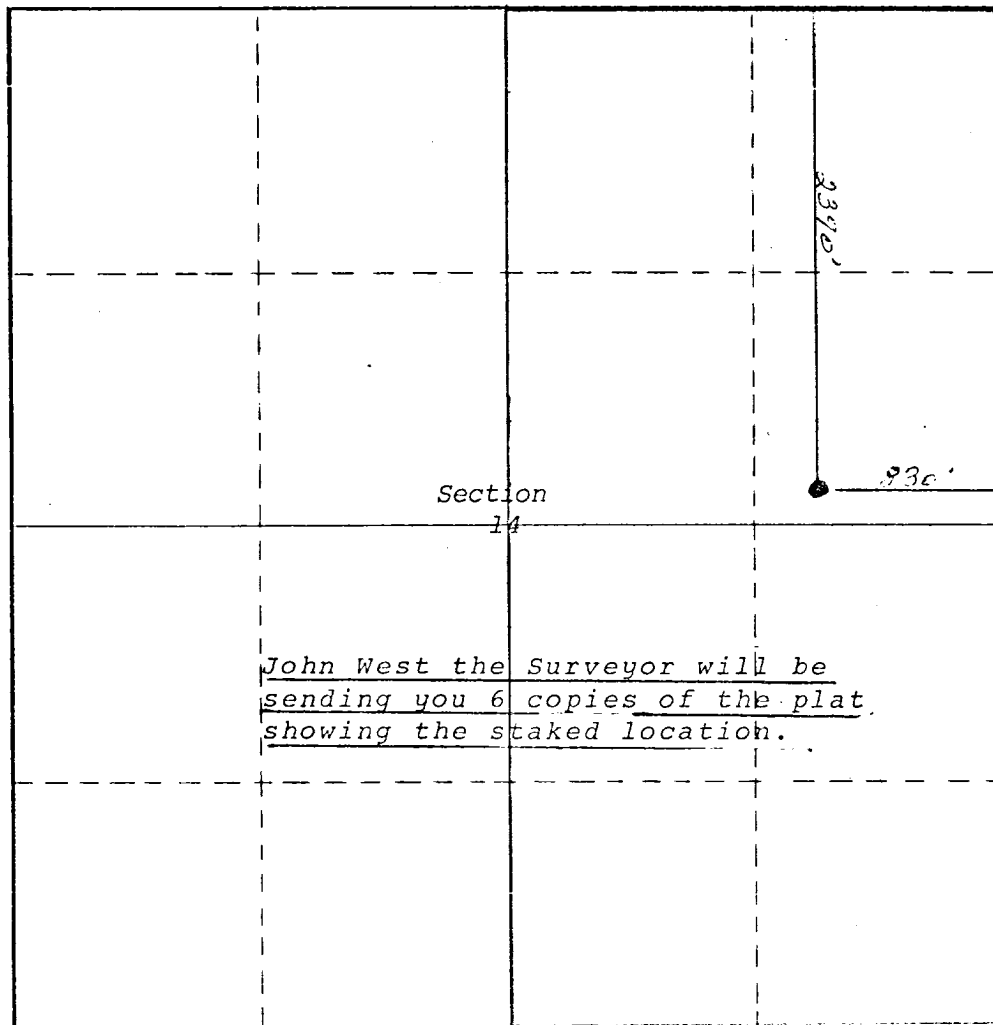
1. Outline the acreage dedicated to the subject well by colored pencil or hachure marks on the plat below.
2. If more than one lease is dedicated to the well, outline each and identify the ownership thereof (both as to working interest and royalty).
3. If more than one lease of different ownership is dedicated to the well, have the interests of all owners been consolidated by communitization, unitization, force-pooling, etc?

☐ Yes ☒ No If answer is "yes," type of consolidation _____

If answer is "no," list the owners and tract descriptions which have actually been consolidated. (Use reverse side of this form if necessary.) _____

No allowable will be assigned to the well until all interests have been consolidated (by communitization, unitization, forced-pooling, or otherwise) or until a non-standard unit, eliminating such interests, has been approved by the Commission.

Range 24 East



John West the Surveyor will be sending you 6 copies of the plat showing the staked location.

CERTIFICATION

I hereby certify that the information contained herein is true and complete to the best of my knowledge and belief.

Neil W. Weldon
 Name **Neil W. Weldon** *mc*

Position
Mgr., Drlg & Prod.

Company
Southern Union Production Co.

Date
October 16, 1973

I hereby certify that the well location shown on this plat was plotted from field notes of actual surveys made by me or under my supervision, and that the same is true and correct to the best of my knowledge and belief.

October 18, 1973
 Date Surveyed

Registered Professional Engineer and/or Land Surveyor

Certificate No.

Township 22 South

