

UNITED STATES  
DEPARTMENT OF THE INTERIOR  
GEOLOGICAL SURVEYAmended  
APPLICATION FOR PERMIT TO DRILL, DEEPEN, OR PLUG BACK

## 1a. TYPE OF WORK

DRILL ☐DEEPEN ☒

## b. TYPE OF WELL

OIL WELL ☐GAS WELL ☒

OTHER

RE-ENTER

SINGLE ZONE ☐MULTIPLE ZONE ☐

## 2. NAME OF OPERATOR

Yates Drilling Company

## 3. ADDRESS OF OPERATOR

207 South 4th Street - Artesia, NM 88210

## 4. LOCATION OF WELL (Report location clearly and in accordance with any State requirements.)\*

At surface

940' FSL &amp; 1980' FEL of Sec. 35-T20½S-

At proposed prod. zone

## 14. DISTANCE IN MILES AND DIRECTION FROM NEAREST TOWN OR POST OFFICE\*

20 miles South of Hope, New Mexico

## 15. DISTANCE FROM PROPOSED\*

LOCATION TO NEAREST

PROPERTY OR LEASE LINE, FT.

(Also to nearest drlg. unit line, if any)

360

## 18. DISTANCE FROM PROPOSED LOCATION\*

TO NEAREST WELL, DRILLING, COMPLETED, OR APPLIED FOR, ON THIS LEASE, FT.

None

## 16. NO. OF ACRES IN LEASE

ARTESIA, OFF

266.84

## 19. PROPOSED DEPTH

Approx. 8800'

## 20. ROTARY OR CABLE TOOLS

Rotary

## 21. ELEVATIONS (Show whether DF, RT, GR, etc.)

4589' GR

## 22. APPROX. DATE WORK WILL START\*

As soon as approved

## 23.

## PROPOSED CASING AND CEMENTING PROGRAM

SIZE OF HOLE	SIZE OF CASING	WEIGHT PER FOOT	SETTING DEPTH	QUANTITY OF CEMENT
15"	13-3/8"	48#	42' (Conductor)	Ready-Mix
12½"	8-5/8"	24#	1600'	Circulate
7-7/8"	4½"	9.5, 10.5, 11.6#	8800'	Approx. 400 sx.

There is presently a Cable Tool drilling a shallow test to approx 1350' Total Depth.

Proposed to re-enter Cable Tool hole (8"), ream hole to 12½" and drill 12½" to intermediate casing depth of approx 1600' - will then drill a 7-7/8" hole to approx. 8800' to test the Morrow and intermediate formations. If commercial pay is encountered, will run 4½" or 5½" casing.

Mud Program: Surface to 1600', FW gel and LossCirc. Material; 1600' to 6200' water; 6200' to TD, low solids KCL mud.

BOP Program: BOP's to be installed on intermediate; Hydril prior to drilling Wolfcamp; pipe rams tested daily; blind rams on trips.

IN ABOVE SPACE DESCRIBE PROPOSED PROGRAM: If proposal is to deepen or plug back, give data on present productive zone and proposed new productive zone. If proposal is to drill or deepen directionally, give pertinent data on subsurface locations and measured and true vertical depths. Give blowout preventer program, if any.

## 24.

SIGNED

*Robert Yates*

TITLE

DATE

(This space for Federal or State office use)

PERMIT NO.

MAY 18 1973

SUBJECT TO ATTACHED DEEP WELL CONDUIT

JUN 22 1973

APPROVED BY

REQUIREMENTS DATED

TITLE

DATE

THIS APPROVAL IS RESCINDED IF OPERATIONS ARE NOT COMMENCED WITHIN 3 MONTHS.

AUG 13 1974

\*See Instructions On Reverse Side

DECLARED WATER BASIN

CEMENT LOG MUST BE CIRCULATED

NOTIFY USGS IN SUFFICIENT TIME TO WITNESS CEMENTING THE CASING.

8 3/4"

RECEIVED

APR 22 1974

U.S. GEOLOGICAL SURVEY  
ARTESIA, NEW MEXICO

RECEIVED

MAY 14 1974

5. LEASE DESIGNATION AND SERIAL NO.  
NM-0502118

6. IF INDIAN, ALLOTTEE OR TRIBE NAME

7. UNIT AGREEMENT NAME

8. FARM OR LEASE NAME

El Paso

9. WELL NO.

1

10. FIELD AND POOL, OR WILDCAT

Wildcat

11. SEC., T., R., M., OR RLK. AND SURVEY OR AREA

Sec. 35-20½S-21E

Unit G NMPM

12. COUNTY OR PARISH

Eddy

13. STATE

NM

N MEXICO OIL CONSERVATION COMMISS.  
WELL LOCATION AND ACREAGE DEDICATION PLAT

Form C-102  
Supersedes C-128  
Effective 1-1-65

All distances must be from the outer boundaries of the Section.

Operator <b>Yates Drilling Company</b>			Lease <b>El Paso</b>		Well No. <b>1</b>
Unit Letter <b>G</b>	Section <b>35</b>	Township <b>20½S</b>	Range <b>21E</b>	County <b>Eddy</b>	
Actual Footage Location of Well: <b>940</b> feet from the <b>South</b> line and <b>1980</b> feet from the <b>East</b> line					
Ground Level Elev. <b>4589 GR</b>	Producing Formation <b>Morrow</b>	Pool <b>Wildcat</b>		Dedicated Acreage: <b>266.84</b> Acres	

1. Outline the acreage dedicated to the subject well by colored pencil or hachure marks on the plat below.
2. If more than one lease is dedicated to the well, outline each and identify the ownership thereof (both as to working interest and royalty).
3. If more than one lease of different ownership is dedicated to the well, have the interests of all owners been consolidated by communitization, unitization, force-pooling, etc?

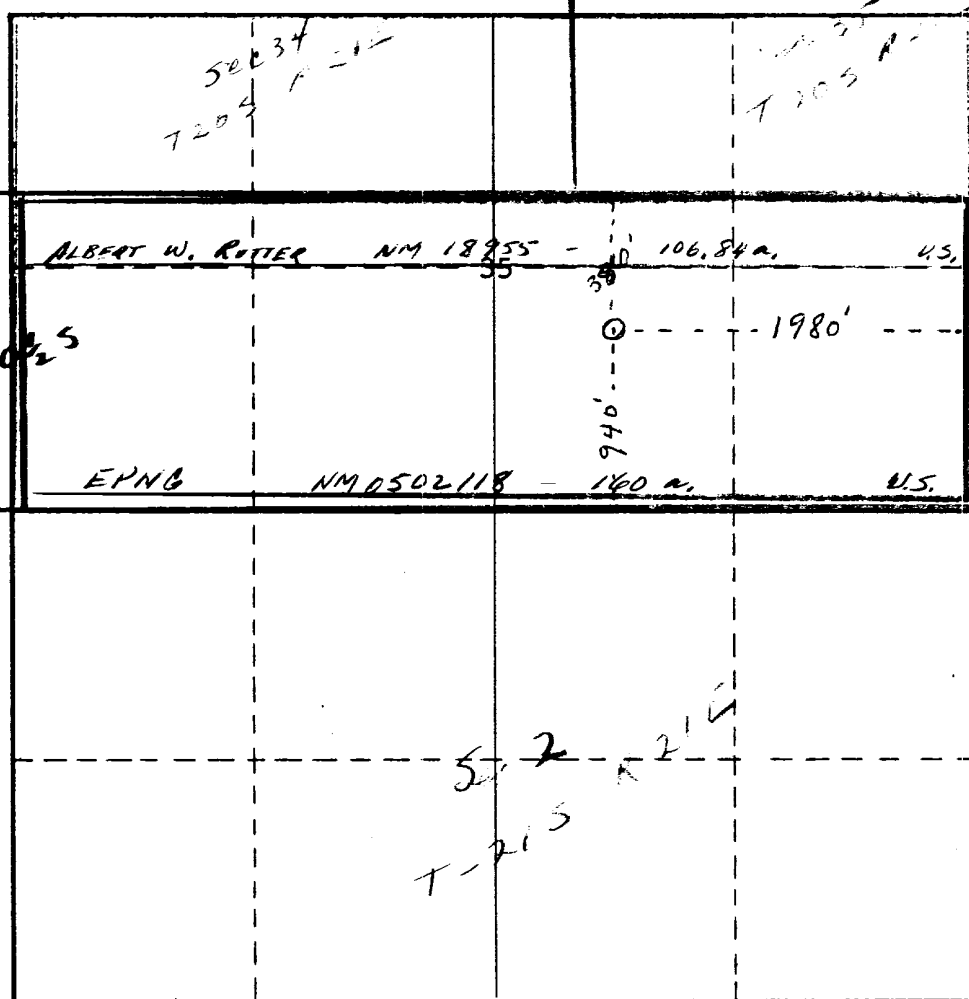
☐ Yes ☒ No

If answer is "yes," type of consolidation

U. S. GEOLOGICAL SURVEY  
ARTESIA, NEW MEXICO

If answer is "no," list the owners and tract descriptions which have actually been consolidated. (Use reverse side of this form if necessary.)

No allowable will be assigned to the well until all interests have been consolidated (by communitization, unitization, forced-pooling, or otherwise) or until a non-standard unit, eliminating such interests, has been approved by the Commission.



CERTIFICATION

I hereby certify that the information contained herein is true and complete to the best of my knowledge and belief.

Name  
**Peyton Yates**

Position  
**Engineer**

Company  
**Yates Drilling Co.**

Date  
**4-22-74**

I hereby certify that the well location shown on this plat was plotted from field notes of actual surveys made by me or under my supervision, and that the same is true and correct to the best of my knowledge and belief.

Refer to Original Plat

Date Surveyed

Registered Professional Engineer and/or Land Surveyor

Certificate No.

YATES DRILLING COMPANY

El Paso No. 1 - Wildcat

940' FSL & 1980' FEL of Section 35-20½S-21E

Eddy County, New Mexico

Development plan for surface use to accompany, "Applications to Drill Onshore Oil, Gas, or Geothermal Steam Wells on Public Domain and acquired Federal Lands:"

1. Existing roads. See Attached Maps
2. Planned access roads. Will utilize existing roads. See Maps. Proposed location is 20 miles south of Hope, NM.
3. Location of wells. 940' FSL & 1980' FEL of Sec. 35-T20½S-R21E, Eddy County, New Mexico
4. Lateral roads to wells locations. See Attached Map. Will blade existing road to location. Use only minimum caliche.
5. Location of tank batteries and flowlines. See Attached Map. Tanks, Separator & flowlines on north side of access roads, abutting mud storage area.
6. Locations and types of water supply. Fresh wtr. purchased at Hope, NM or at Kunyan Ranch 8 miles south of Hope.
7. Methods for handling waste disposal. Engine oil & trash will be disposed of in waste pit.
8. Location of camps. None
9. Location of airstrips. None
10. Location layout to include position of the rig, mud tanks, reserve pits, burn pits, pipe racks, etc. See Sketch
11. Plans for restoration of the surface. Waste pit will be dried & leveled. Burn pit & tank pad will not be built unless producing, then will be fenced. Surface will be restored near to original.
12. Any other information which the Approving Official considers essential to his assessment of the impact on the environment. Location is flanked on North & South by dry drainage gullies. Ground is very rocky. Plant cover is Century, Yucca, Choya and assorted Cacti. Grass is mixture of wild range grasses scattered in clumps.

The affected Federal and State surface managing agencies shall have access to or, if feasible, may be provided with copies of such development.

Submitted by:

Yates Petroleum Corporation

BY

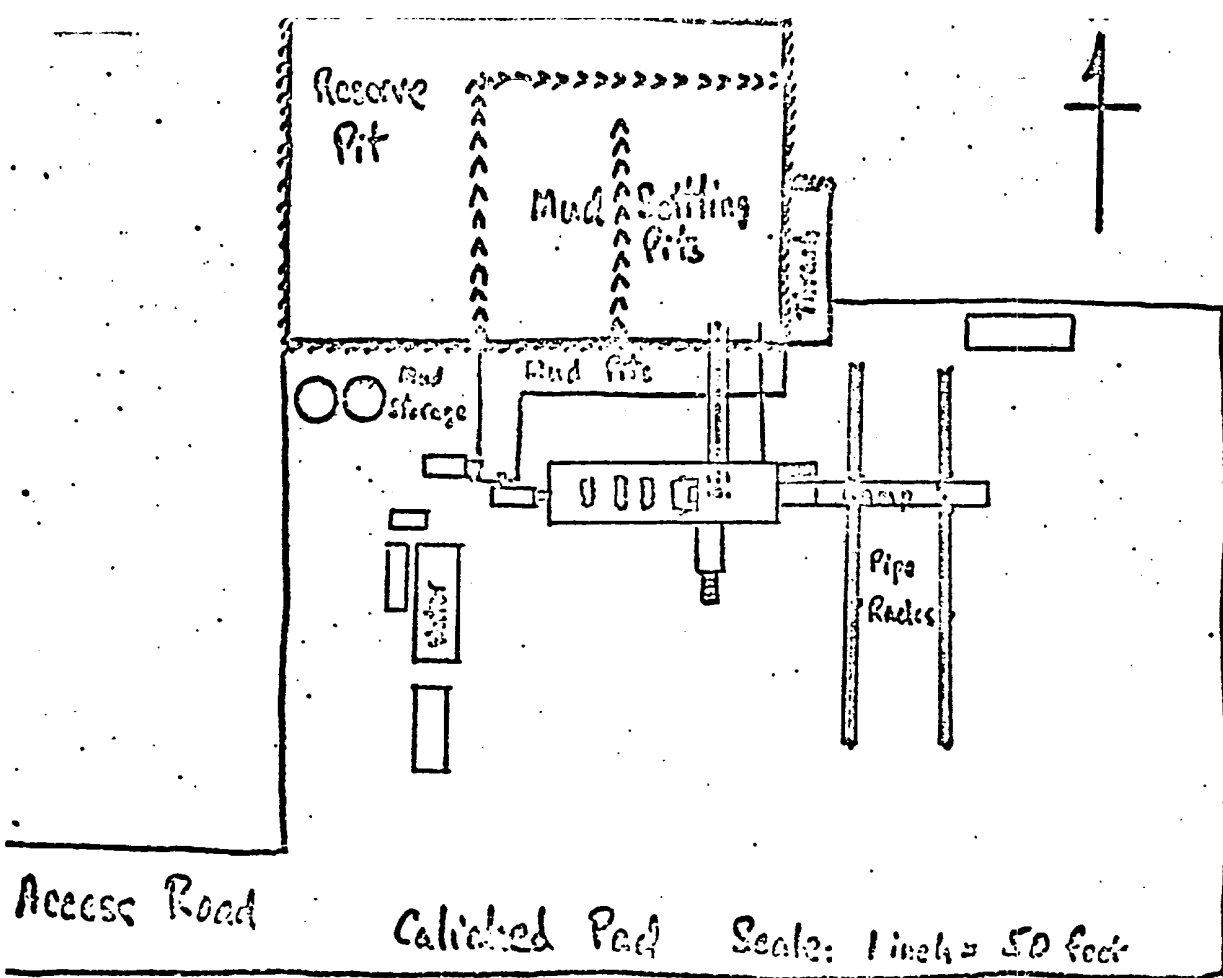
*Peyton Yates*  
Peyton Yates - Engineer

Approved by:

U. S. Geological Survey

BY

RECEIVED  
APR 22 1974  
U.S. GEOLOGICAL SURVEY  
ARTESIA, NEW MEXICO

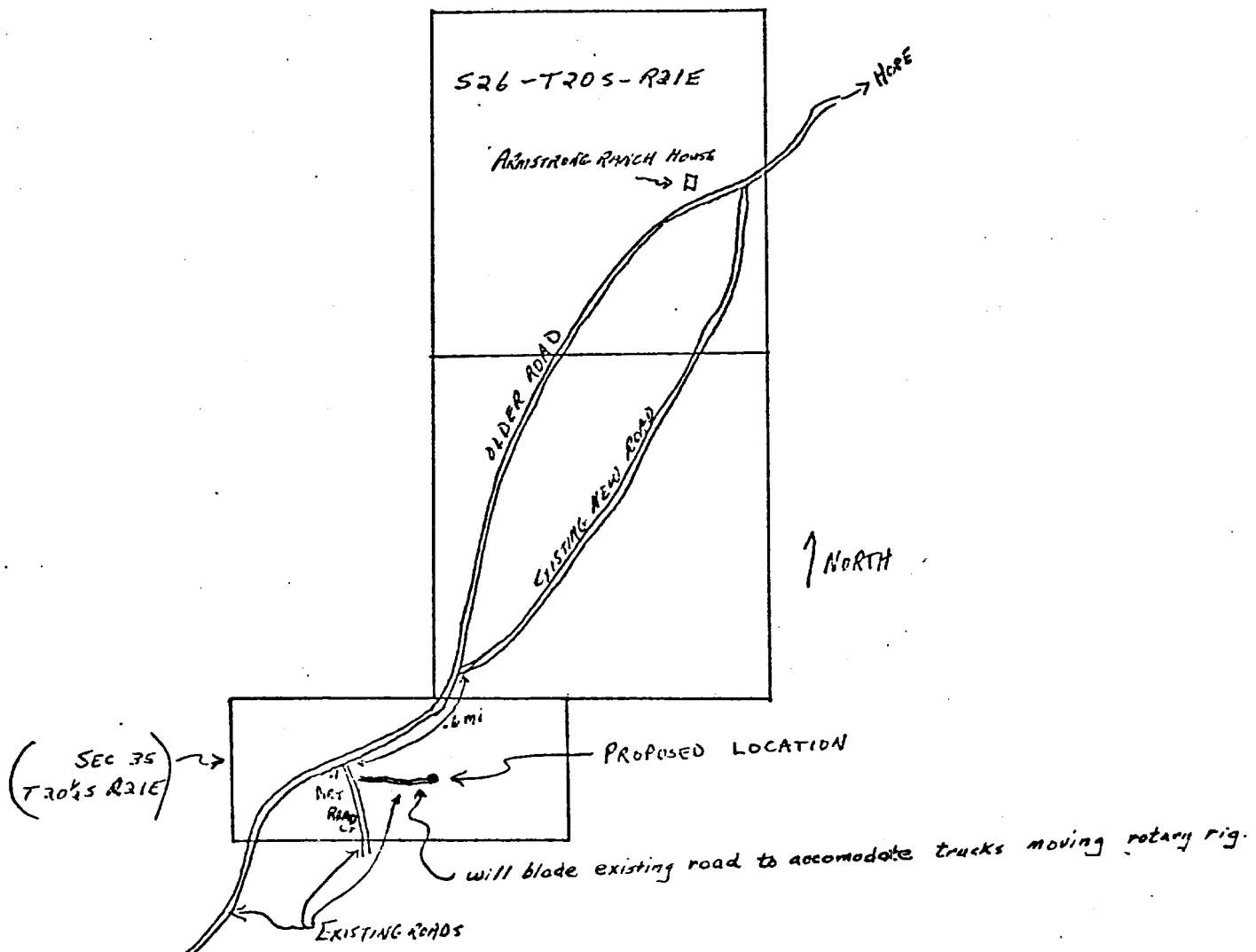


Proposed well site & battery site.

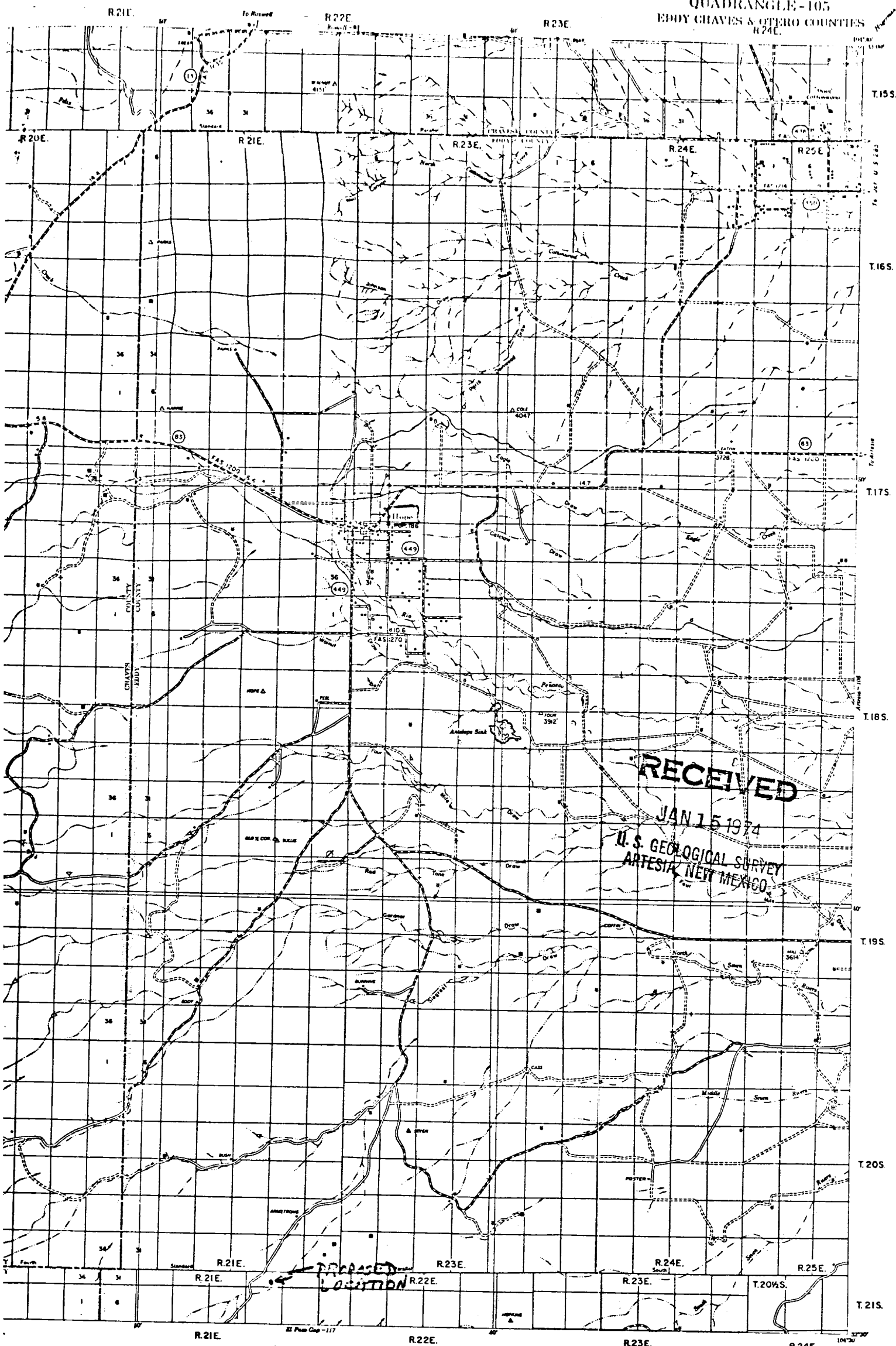
YATES DRILLING COMPANY

-

EL PASO #1, 940' FSL & 1980' FEL  
Sec. 35-T20 $\frac{1}{2}$ S-R21E



HOPE  
QUADRANGLE-105  
EDDY CHAVES & OTERO COUNTIES  
R24E.



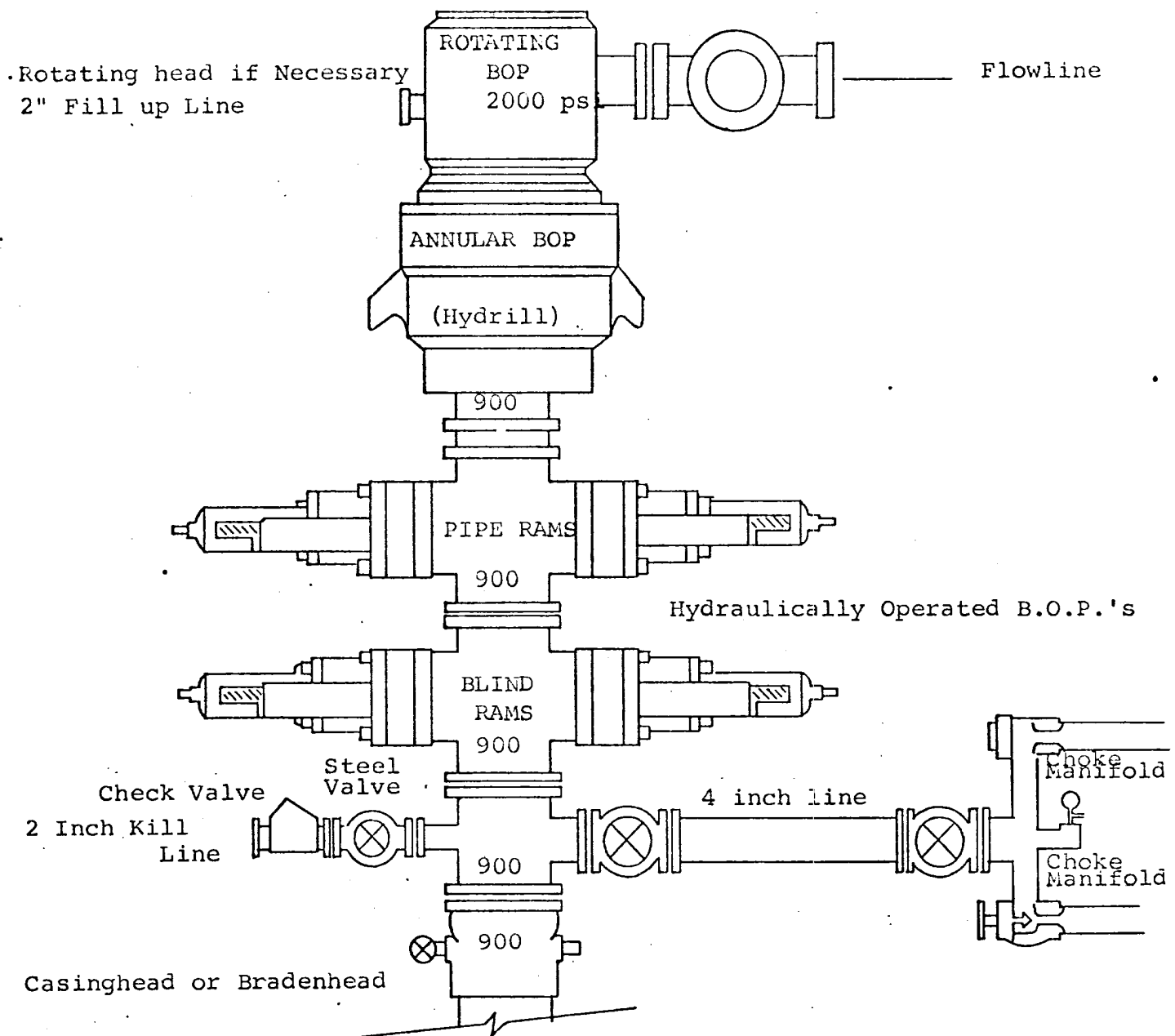
Scale 1:62,500 or 1 inch = 3 Miles  
STATUTE MILES

DATE OF INVENTORY  
EDDY COUNTY 1957  
CHAVES COUNTY 1959  
OTERO COUNTY 1952

HOPE  
QUADRANGLE  
105

YATES DRILLING CO  
EL PASO #1  
S 35. 24. 00. 15

DIAGRAMMATIC SKETCH OF 3000 PSI BOP ASSEMBLY



THE FOLLOWING CONSTITUTE MINIMUM BLOWOUT PREVENTER REQUIREMENTS

1. All preventers to be hydraulically operated with secondary manual controls installed prior to drilling out from under casing.
2. Choke outlet to be a minimum of 4" diameter.
3. Kill line to be of all steel construction of 2" minimum diameter.
4. All connections from operating manifolds to preventers to be all steel hole or tube a minimum of one inch in diameter.
5. The available closing pressure shall be at least 15% in excess of that required with sufficient volume to operate the B.O.P.'s.
6. All Connections to and from preventer to have a pressure rating equivalent to that of the B.O.P.'s.
7. Inside blowout preventer to be available on rig floor.
8. Operating controls located a safe distance from the rig floor.
9. Hole must be kept filled on trips below intermediate casing. Operator not responsible for blowouts resulting from not keeping hole full.
10. Drill pipe must be installed and used below zone of first gas intrusion.

Water Drilling Co.  
El Paso #1  
35-20 1/2 S - 21 E  
Eddy Co. N.M.

**RECEIVED**  
APR 25 1951  
U.S. GEOLOGICAL SURVEY  
ARTESIA, NEW MEXICO