

NEW MEXICO OIL CONSERVATION COMMISSION
WE LOCATION AND ACREAGE DEDICATION PLAT

RECEIVED

Form C-102
 Supersedes C-128
 Effective 1-1-65

All distances must be from the meter boundaries of the Section

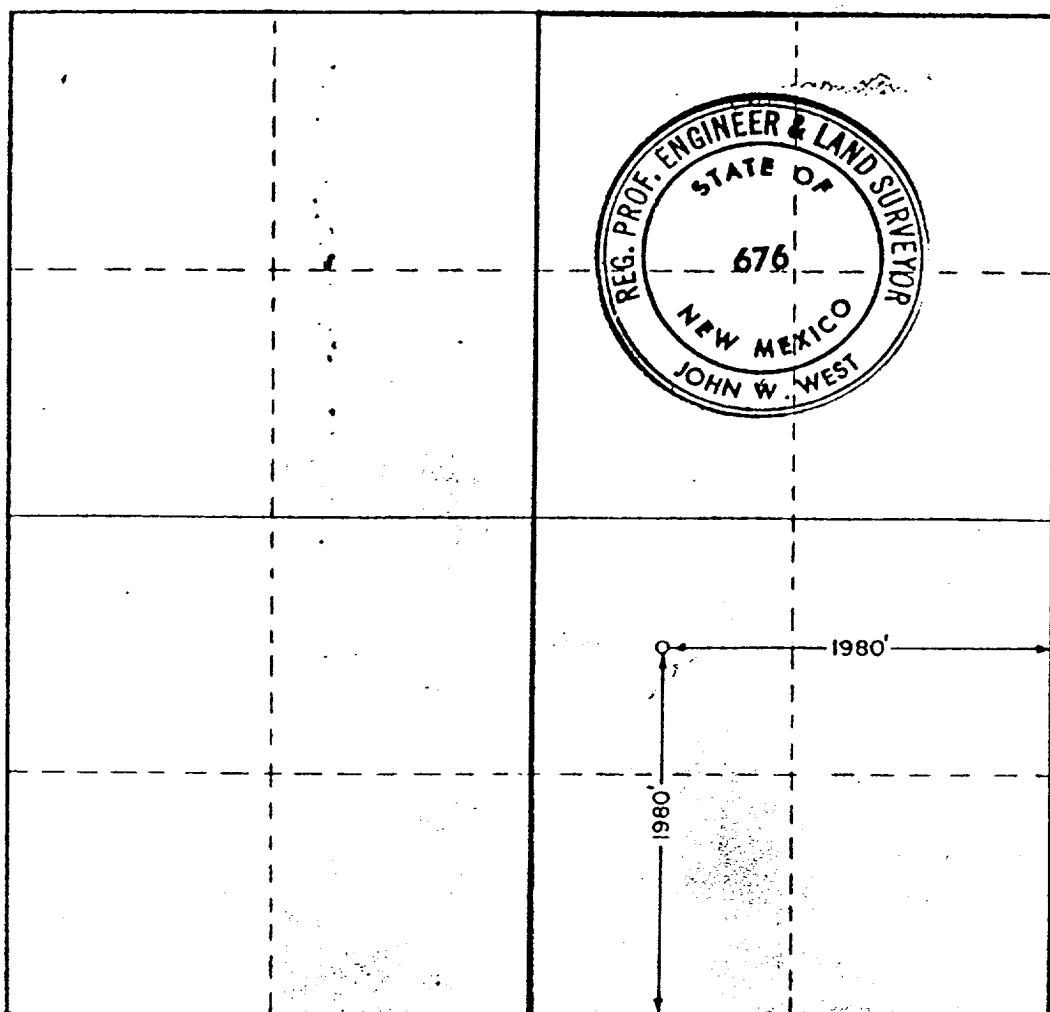
Operator Siete Oil and Gas Corporation			Lease Gilao FEDERAL		OCT 29 1990	Plat No. 2
Unit Letter J	Section 9	Township 20 SOUTH	Range 29 EAST	County EBBY	O. C. D. ARTESIA, OFFICE	
Actual Footage Location of Well:						
1980	feet from the	SOUTH	line and	1980	feet from the	EAST
Ground Level Elev. 3280.7	Producing Formation Delaware		Pool East Burton	Dedicated Acreage: 40		Acres

1. Outline the acreage dedicated to the subject well by colored pencil or hachure marks on the plat below.
2. If more than one lease is dedicated to the well, outline each and identify the ownership thereof (both as to working interest and royalty).
3. If more than one lease of different ownership is dedicated to the well, have the interests of all owners been consolidated by communitization, unitization, force-pooling, etc?

☐ Yes ☐ No If answer is "yes," type of consolidation _____

If answer is "no," list the owners and tract descriptions which have actually been consolidated. (Use reverse side of this form if necessary.) _____

No allowable will be assigned to the well until all interests have been consolidated (by communitization, unitization, forced-pooling, or otherwise) or until a non-standard unit, eliminating such interests, has been approved by the Commission.



CERTIFICATION

I hereby certify that the information contained herein is true and complete to the best of my knowledge and belief

Cathy Batley-Seely
 Cathy Batley-Seely

Drilling Technician

Siete Oil and Gas Corporation

October 4, 1990

I hereby certify that the well location shown on this plat was located from field notes of actual surveys made by me or under my supervision, and the same is true and correct to the best of my knowledge and belief.

RECEIVED
FEB 13 1991
U.S. GEOLOGICAL SURVEY
ARTESIA, NEW MEXICO

Date Surveyed

FEBRUARY 6, 1974

Registered Professional Engineer and/or Land Surveyor

John W. West
 Certificate No.

676

