

N. M. O. C. C. CORP

SUBMIT IN TRIPLICATE*

(Other instructions on
reverse side)Form approved.
Budget Bureau No. 42-R1425.UNITED STATES
DEPARTMENT OF THE INTERIOR
GEOLOGICAL SURVEY

APPLICATION FOR PERMIT TO DRILL, DEEPEN, OR PLUG BACK

1a. TYPE OF WORK

DRILL ☒DEEPEN ☐PLUG BACK ☐

b. TYPE OF WELL

OIL
WELL ☐GAS
WELL ☒

OTHER

SINGLE
ZONEMULTIPLE
ZONE

2. NAME OF OPERATOR

GREAT WESTERN DRILLING COMPANY

3. ADDRESS OF OPERATOR

BOX 1659 MIDLAND TEXAS 79701

4. LOCATION OF WELL (Report location clearly and in accordance with any State requirements.)

At surface

UNIT L, 1980' FSL, 660' FWL, SECTION 34, T-21-S, R-22-E

At proposed prod. zone

14. DISTANCE IN MILES AND DIRECTION FROM NEAREST TOWN OR POST OFFICE*

42 miles southwest of Artesia, New Mexico

15. DISTANCE FROM PROPOSED*

LOCATION TO NEAREST
PROPERTY OR LEASE LINE, FT.
(Also to nearest drlg. unit line, if any)

660'

18. DISTANCE FROM PROPOSED LOCATION*

TO NEAREST WELL, DRILLING, COMPLETED,
OR APPLIED FOR, ON THIS LEASE, FT.

2998'

16. NO. OF ACRES IN LEASE

19. PROPOSED DEPTH

9650'

17. NO. OF ACRES ASSIGNED
TO THIS WELL

320

20. ROTARY OR CABLE TOOLS

Rotary

21. ELEVATIONS (Show whether DF, RT, GR, etc.)

4258.0 GR

22. APPROX. DATE WORK WILL START*

Upon approval

23.

PROPOSED CASING AND CEMENTING PROGRAM

SIZE OF HOLE	SIZE OF CASING	WEIGHT PER FOOT	SETTING DEPTH	QUANTITY OF CEMENT
17 1/4"	13 3/8"	48#	350'	400 sx circulated
12 1/4"	8 5/8"	32# & 24#	1,900'	1200 sx circulated
7 7/8"	5 1/2"	15.5# & 17#	9,650'	700 sx

OBJECTIVE:

Morrow Formation

MUD PROGRAM:

0-350'; spud mud ; 350' to 1900' water and LCM;
1900' to 6300' water; 6300' to TD KCL water w/Flosal & Drispac,
weight 9.0

BLOWOUT PREVENTER:

Hydraulically operated series 900 with blank and pipe rams to
be tested daily.IN ABOVE SPACE DESCRIBE PROPOSED PROGRAM: If proposal is to deepen or plug back, give data on present productive zone. If proposal is to drill or deepen directionally, give pertinent data on subsurface locations and measured and true vertical depths. Give blowout
preventer program, if any.

24.

SIGNED R.I. ComstockTITLE Chief EngineerDATE 2-18-74

(This space for Federal or State office use)

SUBJECT TO ATTACHED DEEP WELL CONTROL
APPROVAL
REQUIREMENTS DATED JUN 22 1973

TITLE

DATE

APPROVED

MAR 5 - 1974

APPROVED BY
R. L. BECKWITH
ACTING DISTRICT ENGINEERTHIS APPROVAL IS RECORDED IF OPERATIONS
ARE NOT COMMENCED WITHIN 3 MONTHS.
EXPIRES JUN 5 - 1974

*See Instructions On Reverse Side

DECLARED WATER BASIN
13 3/8"
5 7/8"
CIMENT BEH TO THE
CASING MUST BE CIRCULATED

RECEIVED

FEB 20 1974

U.S. GEOLOGICAL SURVEY
BUREAU OF MINERAL RESOURCES
BIRMINGHAM, ALABAMA

Instructions

General: This form is designed for submitting proposals to perform certain well operations, as indicated, on all types of lands and leases for appropriate action by either a Federal or a State agency or both pursuant to applicable Federal and/or State laws and regulations. Any necessary special instructions concerning the use of this form and the number of copies to be submitted, particularly with regard to local, area, or regional procedures and practices, either are shown below or will be issued by, or may be obtained from, the local Federal and/or State office.

Item 1: If the proposal is to redrill in the same reservoir at a different subsurface location or to a new reservoir, use this form with appropriate notations. Consult applicable State or Federal regulations concerning subsequent work proposals or reports on the well.

Item 4: If there are no applicable State requirements, locations on Federal or Indian land should be described in accordance with Federal requirements. Consult local State or Federal office for specific instructions.

Item 14: Needed only when location of well cannot readily be found by road from the land or lease description. A plat, or plats, separate or on this reverse side, showing the roads to, and the surveyed location of, the well, and any other required information, should be furnished when required by Federal or State agency offices.

Items 15 and 18: If well is to be, or has been directionally drilled, give distances for subsurface location of hole in any present or objective production zone.

Item 22: Consult applicable Federal or State regulations, or appropriate officials, concerning approval of the proposal before operations are started.

NEW MEXICO OIL CONSERVATION COMMISSION
WELL LOCATION AND ACREAGE DEDICATION PLAT

Form C-102
 Supersedes C-128
 Effective 1-1-65

All distances must be from the outer boundaries of the Section

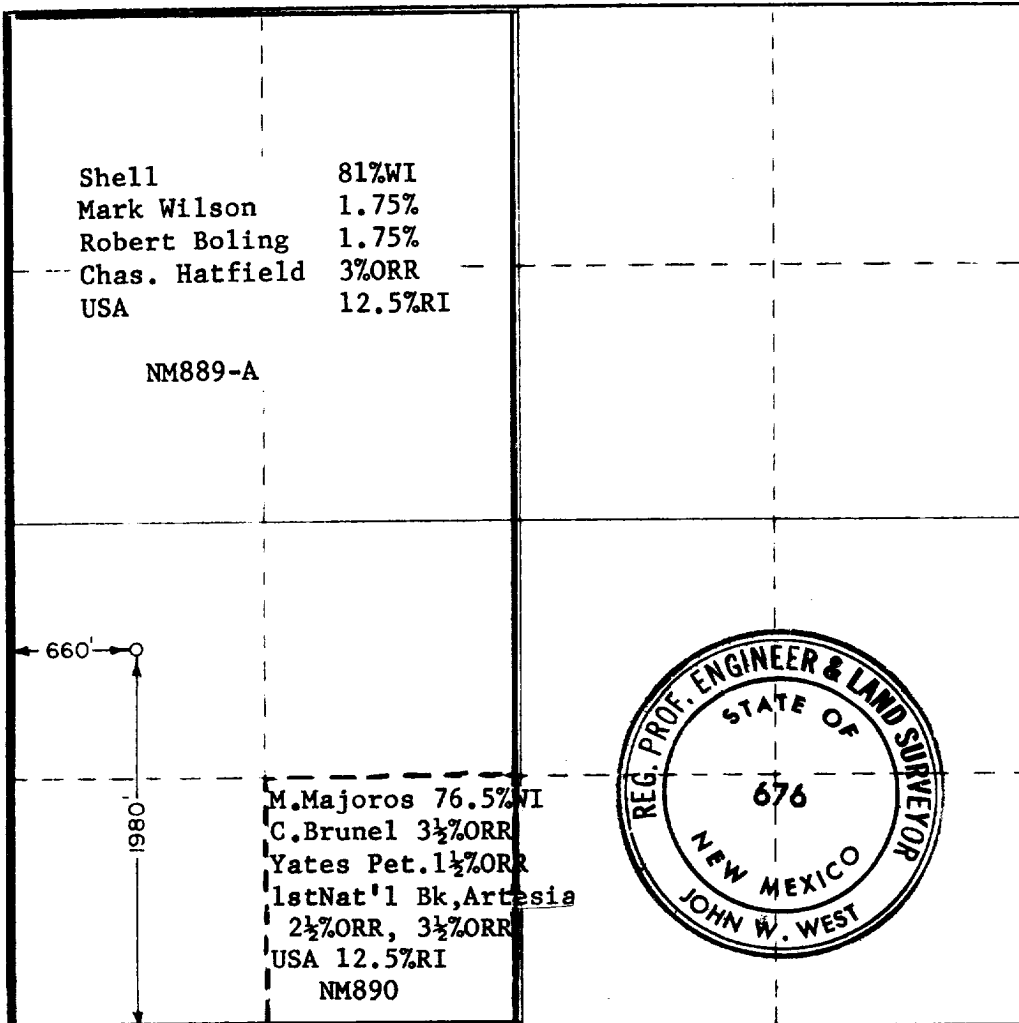
Operator GREAT WESTERN DRILLING CO.			Lease REESE-CLEVELAND "B" FED		Well No. 1
Unit Letter L	Section 34	Township 21 SOUTH	Range 22 EAST	County EDDY	
Actual Footage Location of Well: 1980 feet from the SOUTH line and 660 feet from the WEST line					
Ground Level Elev. 4258.0	Producing Formation MORROW		Pool <i>Rocky anago</i> UNDESIGNATED (MORROW)		Dedicated Acreage: 320 Acres

1. Outline the acreage dedicated to the subject well by colored pencil or hachure marks on the plat below.
2. If more than one lease is dedicated to the well, outline each and identify the ownership thereof (both as to working interest and royalty).
3. If more than one lease of different ownership is dedicated to the well, have the interests of all owners been consolidated by communitization, unitization, force-pooling, etc?

☐ Yes ☒ No If answer is "yes," type of consolidation _____

If answer is "no," list the owners and tract descriptions which have actually been consolidated (Use reverse side of this form if necessary.) **NONE**

No allowable will be assigned to the well until all interests have been consolidated (by communitization, unitization, forced-pooling, or otherwise) or until a non-standard unit, eliminating such interests, has been approved by the Commission.



CERTIFICATION

I hereby certify that the information contained herein is true and complete to the best of my knowledge and belief.

R. I. Comstock
 Name
R. I. Comstock

Position
Chief Engineer
Great Western
Drilling Company

Date
February 18, 1974

RECEIVED
 I hereby certify that the well location shown on this plat was plotted from field notes of actual survey made by me or under my supervision, and the same is true and correct to the best of my knowledge.
FEB 20 1974
U.S. GEOLOGICAL SURVEY
ARTESIA, NEW MEXICO

Date Surveyed
FEBRUARY 17, 1974

Registered Professional Engineer and/or Land Surveyor

John W. West
 Certificate No. **676**

