

NEW MEXICO OIL CONSERVATION COMMISSION
WELL LOCATION AND ACREAGE DEDICATION PLAT
N. M. O. C. C. COPY

Form 1-1-1
 Supersedes 1-1-1
 Effective 1-1-68

All distances must be from the water surface of the Section

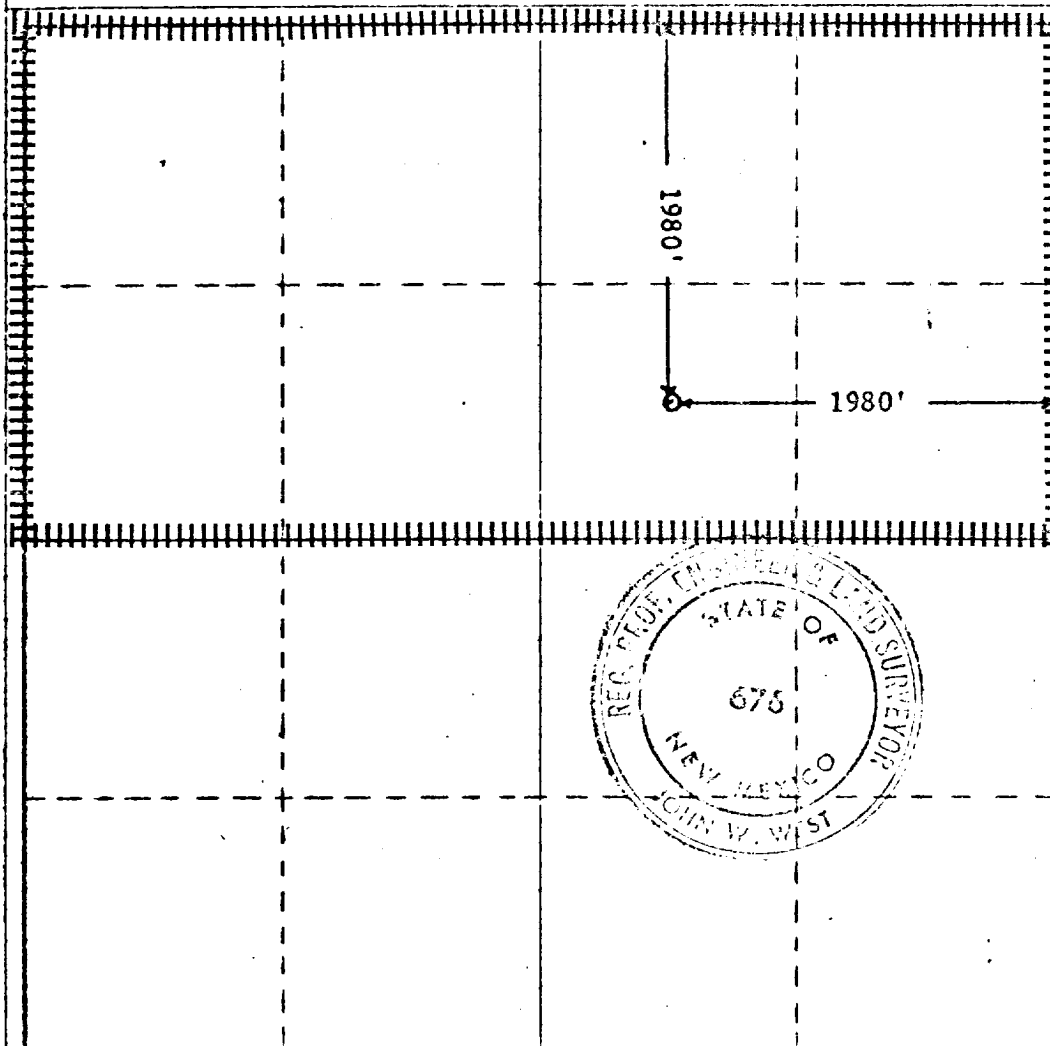
Operator PERRY R. BASS		Lease BIG EDDY UNIT		Well No. 40
Unit Letter G	Section 22	Township 21S	Range 29E	County EDDY
Actual Footage Location of Well: 1980' feet from the NORTH line and 1980' feet from the EAST line				
Ground Level Elev. 3430.1'	Producing Formation Permian	Pool	Dedicated Acreage: 5.20 Acres	

1. Outline the acreage dedicated to the subject well by colored pencil or hatchure marks on the plat below.
2. If more than one lease is dedicated to the well, outline each and identify the ownership thereof (both as to working interest and royalty).
3. If more than one lease of different ownership is dedicated to the well, have the interests of **RECEIVED** been consolidated by communitization, unitization, force-pooling, etc?

☐ Yes ☐ No If answer is "yes," type of consolidation **MAR 15 1974**

If answer is "no," list the owners and tract descriptions which have actually been consolidated. (**O.C.C.** side of this form if necessary.) **ARTESIA, OFFICE**

No allowable will be assigned to the well until all interests have been consolidated (by communitization, unitization, forced-pooling, or otherwise) or until a non-standard unit, eliminating such interests, has been approved by the Commission.



CERTIFICATION

I hereby certify that the information contained herein is true and complete to the best of my knowledge and belief.

Name **Tom R. Cook**
 Position **Engineer**
 Company **Perry R. Bass**
 Date **February 26, 1974**

RECEIVED
 I hereby certify that the well location shown on this plat was plotted from field notes of actual surveys made by me or under my supervision and that the same is true to the best of my knowledge and belief.

Date Surveyed **FEBRUARY 23, 1974**
 Registered Professional Engineer and/or Land Surveyor

John W. West
 License No. **676**