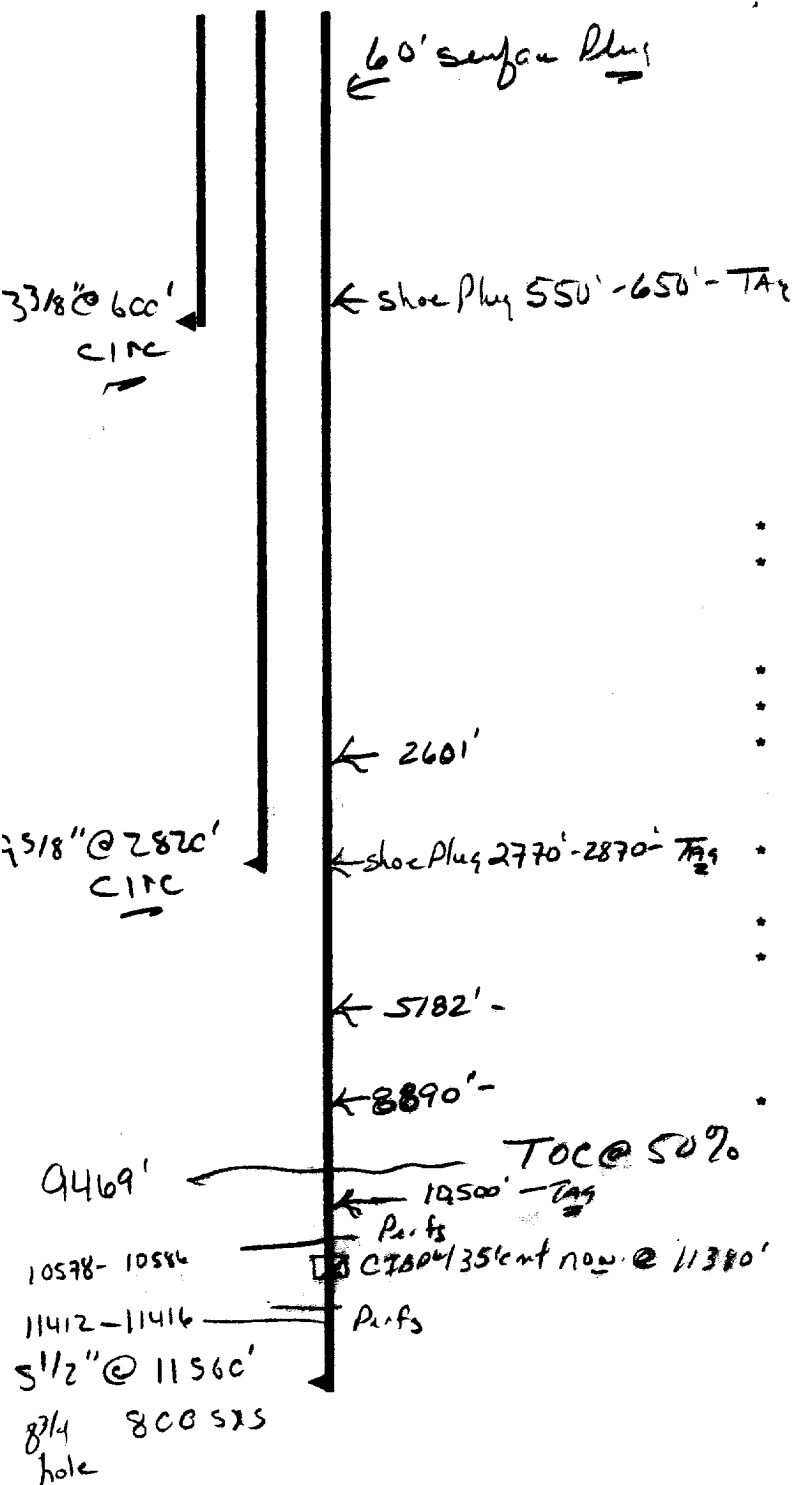


Operator Ocean Energy, Inc.
 Well BWATCH Flat Deep Ut. #13
 Unit C Section 28 Township 20 Range 28
 API # 30-015-21125

TOPS



Neef	1500
Delaware	2601
Base Springs	5182
Wolfcamp	8890
Penn	9890
Strawn	10159
Atoka	10489
McAraw LS	10950
McAraw CLASTICS	11078

- * Contact OCD 24 hrs. prior to any work done.
- * Salt gel mud consisting of 10# brine with 25# of gel per barrel must be placed between each plug.
- * Install dry hole marker as per Rule 202.B.2
- * Plugs are to be set from point indicated up.
- * Plugs must not be less than 100' or 25 Sacks of cement, whichever is greater, unless specifically indicated.
- * Shoe and stub plugs will be 50' above and below shoe or stub and tagged.
- * Surface plug will be from 0' - 60'
- * Where plugs are required, cement must be placed inside and outside of all casing string(s) in the correct footage or sacks required, if no cement exists.
- * Plugs to be tagged will be indicated.