

Copy to SF
H&B
St. Louis

Form C-122
Supersedes C-128
Effective 1-1-65

MEXICO OIL CONSERVATION COMMISSION
WELL LOCATION AND ACREAGE DEDICATION PLAT

All distances must be from the outer boundaries of the Section.

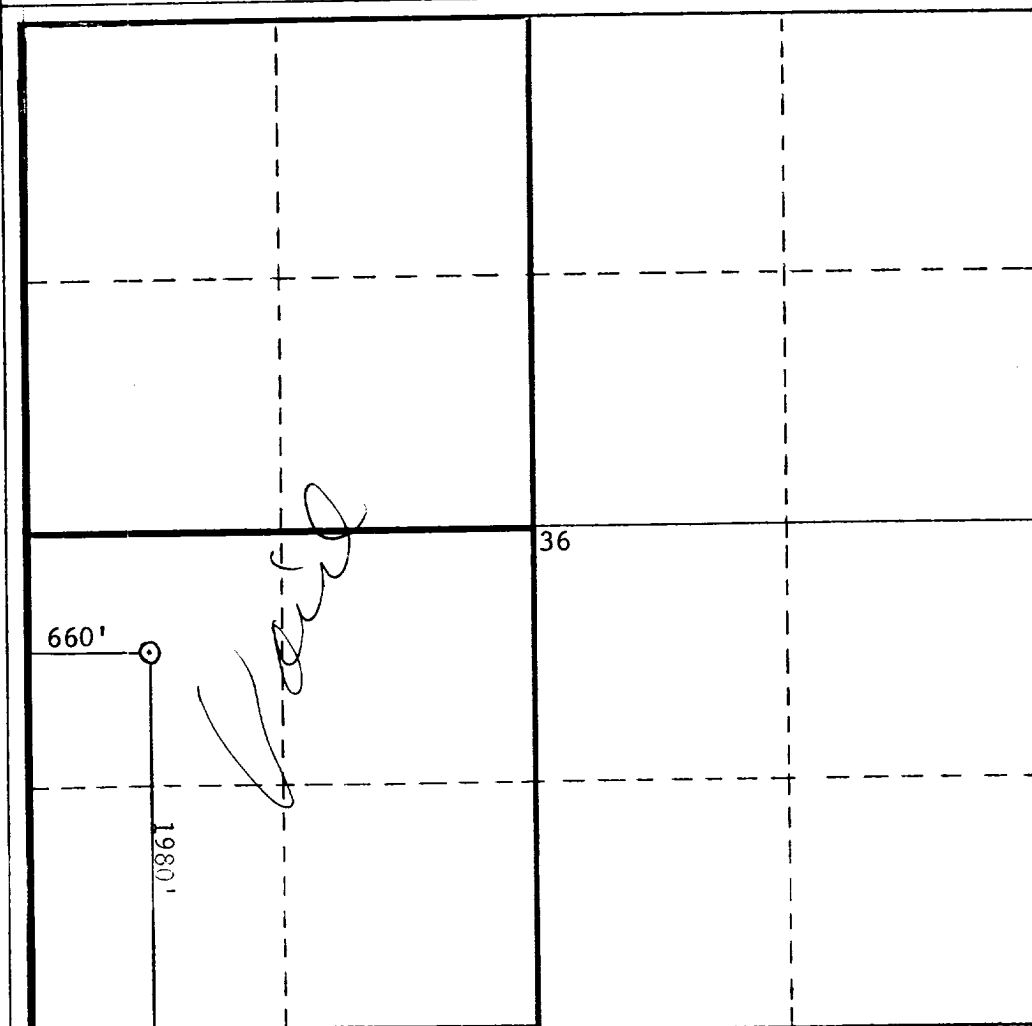
Operator Champlin Petroleum Company			Lease State "36"		Well No. 1
Unit Letter L	Section 36	Township 21 South	Range 27-East	County Eddy	
Actual Footage Location of Well: 660 feet from the West line and 1980 feet from the South line					
Ground Level Elev. 3101 GL	Producing Formation Wolfcamp		Pool East Carlsbad (Wolfcamp) Gas		Dedicated Acreage: 320 Acres

1. Outline the acreage dedicated to the subject well by colored pencil or hachure marks on the plat below.
2. If more than one lease is dedicated to the well, outline each and identify the ownership thereof (both as to working interest and royalty).
3. If more than one lease of different ownership is dedicated to the well, have the interests of all owners been consolidated by communitization, unitization, force-pooling, etc?

☐ Yes ☐ No If answer is "yes," type of consolidation _____

If answer is "no," list the owners and tract descriptions which have actually been consolidated. (Use reverse side of this form if necessary.) _____

No allowable will be assigned to the well until all interests have been consolidated (by communitization, unitization, forced-pooling, or otherwise) or until a non-standard unit, eliminating such interests, has been approved by the Commission.



0 330 660 990 1320 1650 1980 2310 2640 2000 1500 1000 500 0

CERTIFICATION

I hereby certify that the information contained herein is true and complete to the best of my knowledge and belief.

Walter W. C. [Signature]
Name

Position
District Clerk

Company
Champlin Petroleum Company

Date
January 28, 1976

I hereby certify that the well location shown on this plat was plotted from field notes of actual surveys made by me or under my supervision, and that the same is true and correct to the best of my knowledge and belief.

Date Surveyed

Registered Professional Engineer and/or Land Surveyor

Certificate No. **1469**

H. STANFORD

RECEIVED

JAN 30 1976

B. C. C.
ARTESIA, OFFICE