

OIL CONSERVATION DIVISION

P. O. BOX 2088

Form C-102
Revised 10-1-78

SANTA FE, NEW MEXICO 87501

STATE OF NEW MEXICO
ENERGY AND MINERALS DEPARTMENT

All distances must be from the outer boundaries of the Section.

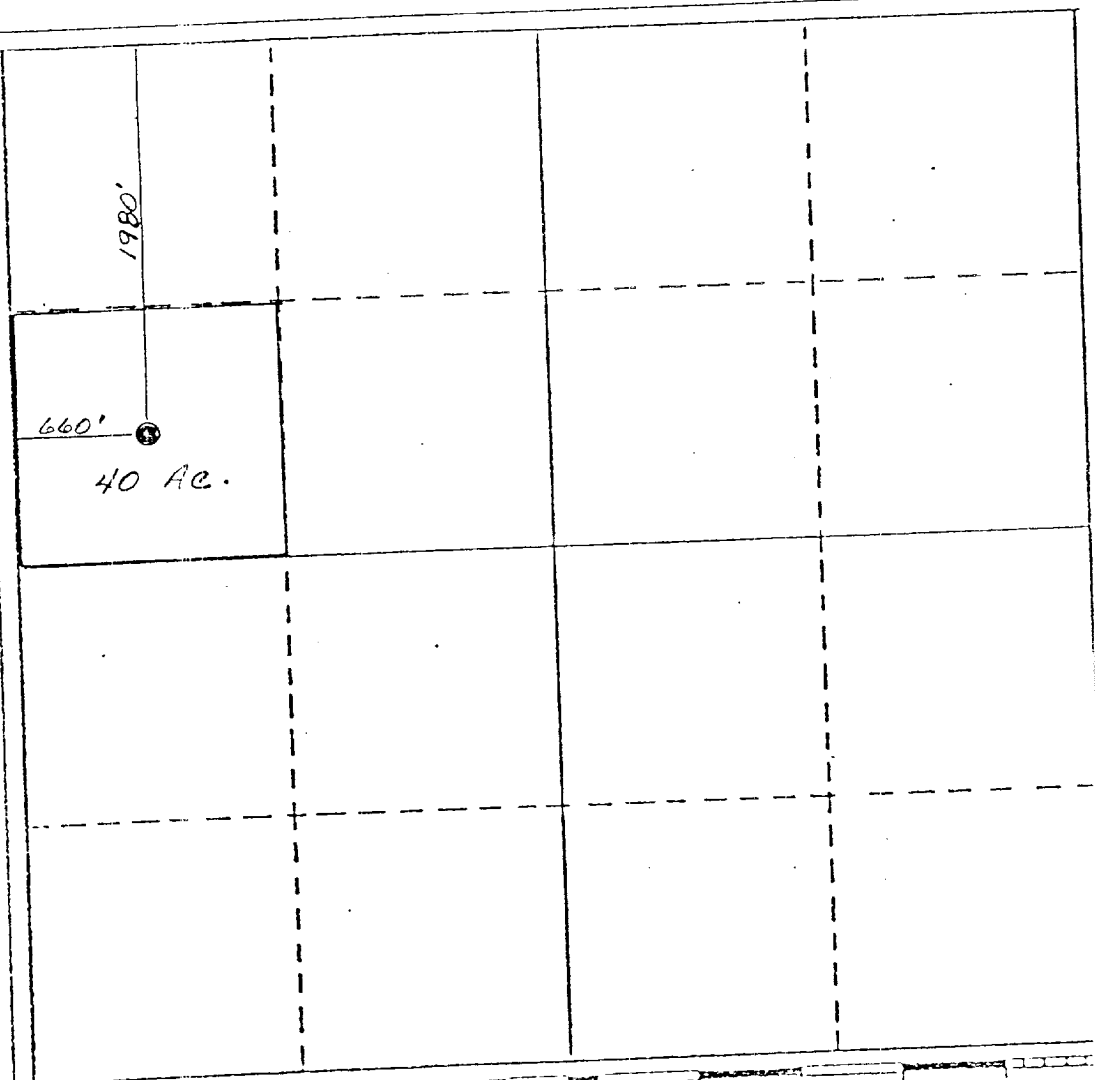
Operator The Superior Oil Company		Lease Government "D"		Well No. 2
Init Letter E	Section 12	Township 21 South	Range 27 East	County Eddy
Actual Footage Location of Well: 1980 feet from the North line and 660 feet from the West line				
Ground Level Elev. 3223'	Producing Formation Bone Spring		Pool Wildcat	Dedicated Acreage: 40 Acres

1. Outline the acreage dedicated to the subject well by colored pencil or hachure marks on the plat below.
2. If more than one lease is dedicated to the well, outline each and identify the ownership thereof (both as to working interest and royalty).
3. If more than one lease of different ownership is dedicated to the well, have the interests of all owners been consolidated by communitization, unitization, force-pooling, etc?

☐ Yes ☐ No If answer is "yes," type of consolidation _____

If answer is "no," list the owners and tract descriptions which have actually been consolidated. (Use reverse side of this form if necessary.) _____

No allowable will be assigned to the well until all interests have been consolidated (by communitization, unitization, forced-pooling, or otherwise) or until a non-standard unit, eliminating such interests, has been approved by the Division.



CERTIFICATION

I hereby certify that the information contained herein is true and complete to the best of my knowledge and belief.

G. E. Tate G.E. Tate
Division Operations Supt.

Position

The Superior Oil Company

Company

6-26-84

Date

I hereby certify that the well location shown on this plat was plotted from field notes of actual surveys made by me or under my supervision, and that the same is true and correct to the best of my knowledge and belief.

Date Surveyed

April 30, 1974

Registered Professional Engineer
and/or Land SurveyorJohn W. West

Certificate No.

676