

UNITED STATES
DEPARTMENT OF THE INTERIOR
GEOLOGICAL SURVEY

APPLICATION FOR PERMIT TO DRILL, DEEPEN, OR PLUG BACK

1a. TYPE OF WORK

DRILL ☒DEEPEN ☐PLUG BACK ☐

b. TYPE OF WELL

OIL
WELL ☐GAS
WELL ☒

OTHER

SINGLE
ZONE ☒MULTIPLE
ZONE ☐

2. NAME OF OPERATOR

Midwest Oil Corporation

3. ADDRESS OF OPERATOR

1500 Wilco Building Midland, TX 79701

4. LOCATION OF WELL (Report location clearly and in accordance with any State requirements.)*

At surface

2180' FSL & 1980' FEL

At proposed prod. zone

14. DISTANCE IN MILES AND DIRECTION FROM NEAREST TOWN OR POST OFFICE*

Approx. 5 miles SW of Carlsbad

15. DISTANCE FROM PROPOSED*

LOCATION TO NEAREST

PROPERTY OR LEASE LINE, FT.

(Also to nearest drig. unit line, if any)

1980'

16. NO. OF ACRES IN LEASE*

ARTESIA, N. M.

17. NO. OF ACRES ASSIGNED

TO THIS WELL

320

18. DISTANCE FROM PROPOSED LOCATION*

TO NEAREST WELL, DRILLING, COMPLETED,

OR APPLIED FOR, ON THIS LEASE, FT.

19. PROPOSED DEPTH

11,800

20. ROTARY OR CABLE TOOLS

Cable to approx. 2000'

21. ELEVATIONS (Show whether DF, RT, GR, etc.)

22. APPROX. DATE WORK WILL START*

Immediately

23.

PROPOSED CASING AND CEMENTING PROGRAM

SIZE OF HOLE	SIZE OF CASING	WEIGHT PER FOOT	SETTING DEPTH	QUANTITY OF CEMENT
24"	20"	94#	40'	Premix
17 1/4"	13 3/8"	48#	400'	250 sx
12 1/4"	9 5/8"	36 & 40#	2650'	1300 sx
optional) 8 3/4"	7"	23 & 26#	10,800'	200 sx
6 1/8"	4 1/2"	11.6#	10,700-11,800'	100 sx
optional) 8 3/4"	4 1/2"		11,800'	250 sx

Note: A 7" protective string is planned if abnormally pressured gas zones are encountered.

Development plan, mud program, etc. attached.

RECEIVED

MAY 29 1974

U. S. GEOLOGICAL SURVEY
ARTESIA, NEW MEXICO

IN ABOVE SPACE DESCRIBE PROPOSED PROGRAM: If proposal is to deepen or plug back, give data on present productive zone and proposed new productive zone. If proposal is to drill or deepen directionally, give pertinent data on subsurface locations and measured and true vertical depths. Give blowout preventer program, if any.

24.

SIGNED

Bonnie Huskand

TITLE Production Clerk

DATE 5-28-74

(This space for Federal or State office use)

PERMIT NO.

APPROVAL DATE

MAY 30 1974

APPROVED BY

John A. Ruff

TITLE

DISTRICT ENGINEER

DATE

CONDITIONS OF APPROVAL, IF ANY:

SUBJECT TO ATTACHED DEEP WELL CONTROL

REQUIREMENTS DATED JUN 22 1974

*See Instructions On Reverse Side

DECLARED WATER BASIN
CEMENT BEHIND
CASING MUST BE CIRCULATED

BH:j1

NEW MEXICO OIL CONSERVATION COMMISSION
WELL LOCATION AND ACREAGE DEDICATION PLAT

Form C-102
Supersedes C-128
Effective 1-1-65

All distances must be from the outer boundaries of the Section

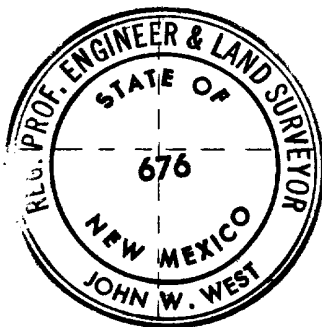
Operator MIDWEST OIL CORPORATION			Lease FEDERAL "P"		Well No. 1
Unit Letter J	Section 34	Township 22 SOUTH	Range 26 EAST	County EDDY	
Actual Footage Location of Well: 2180 feet from the SOUTH line and 1980 feet from the EAST line					
Ground Level Elev. 3290.9	Producing Formation MORROW	Pool <i>hand</i> SOUTH CARLSBAD		Dedicated Acreage E 1/4 320 Acres	

1. Outline the acreage dedicated to the subject well by colored pencil or hatchure marks on the plat below.
2. If more than one lease is dedicated to the well, outline each and identify the ownership thereof (both as to working interest and royalty).
3. If more than one lease of different ownership is dedicated to the well, have the interests of all owners been consolidated by communitization, unitization, force-pooling, etc?

☐ Yes ☐ No If answer is "yes," type of consolidation _____

If answer is "no," list the owners and tract descriptions which have actually been consolidated. (Use reverse side of this form if necessary.) _____

No allowable will be assigned to the well until all interests have been consolidated (by communitization, unitization, forced-pooling, or otherwise) or until a non-standard unit, eliminating such interests, has been approved by the Commission.



CERTIFICATION

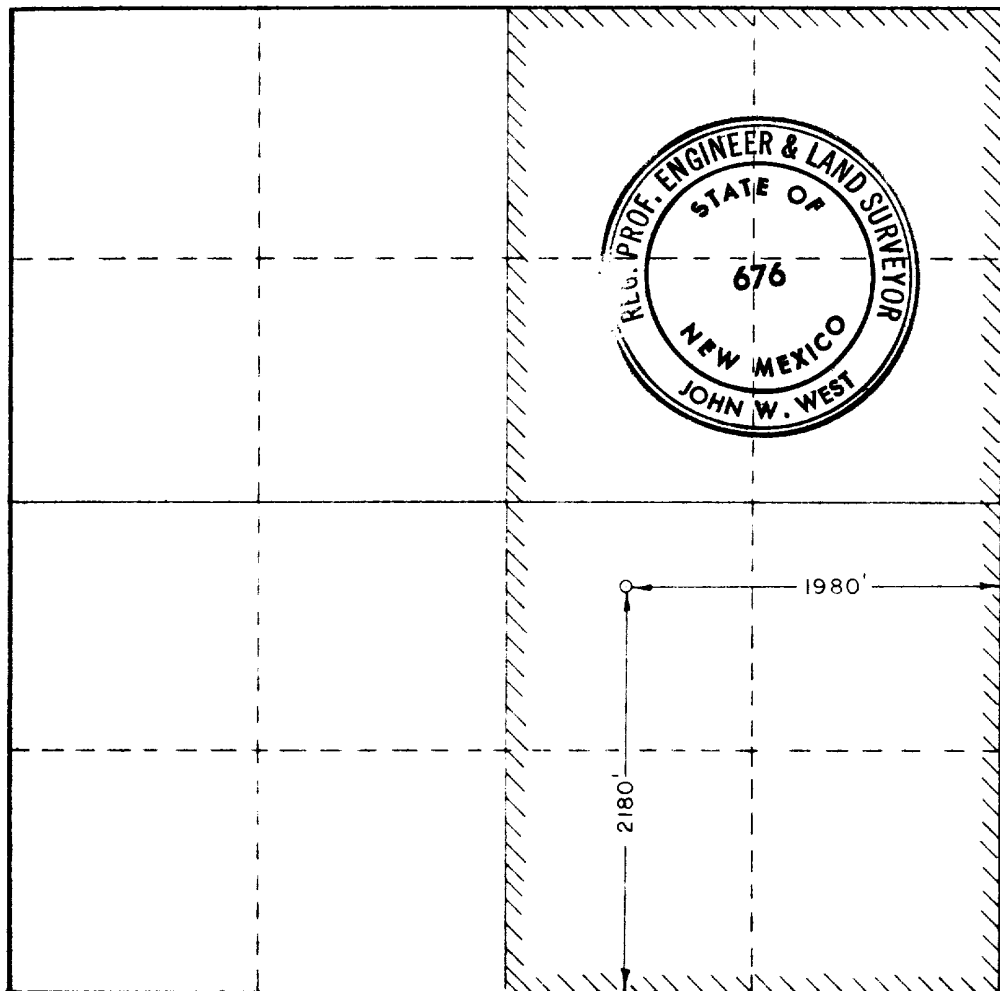
I hereby certify that the information contained herein is true and complete to the best of my knowledge and belief

Name *John W. West*
Position
AGENT
Company
MIDWEST OIL CORP.
Date
MAY 28, 1974

I hereby certify that the well location shown on this plat was plotted on field notes of a survey made by _____ under my supervision, and that the same is true and correct to the best of my knowledge and belief.

Date Surveyed
MAY 25, 1974
Registered Professional Engineer and/or Land Surveyor

John W. West
Certificate No. **676**



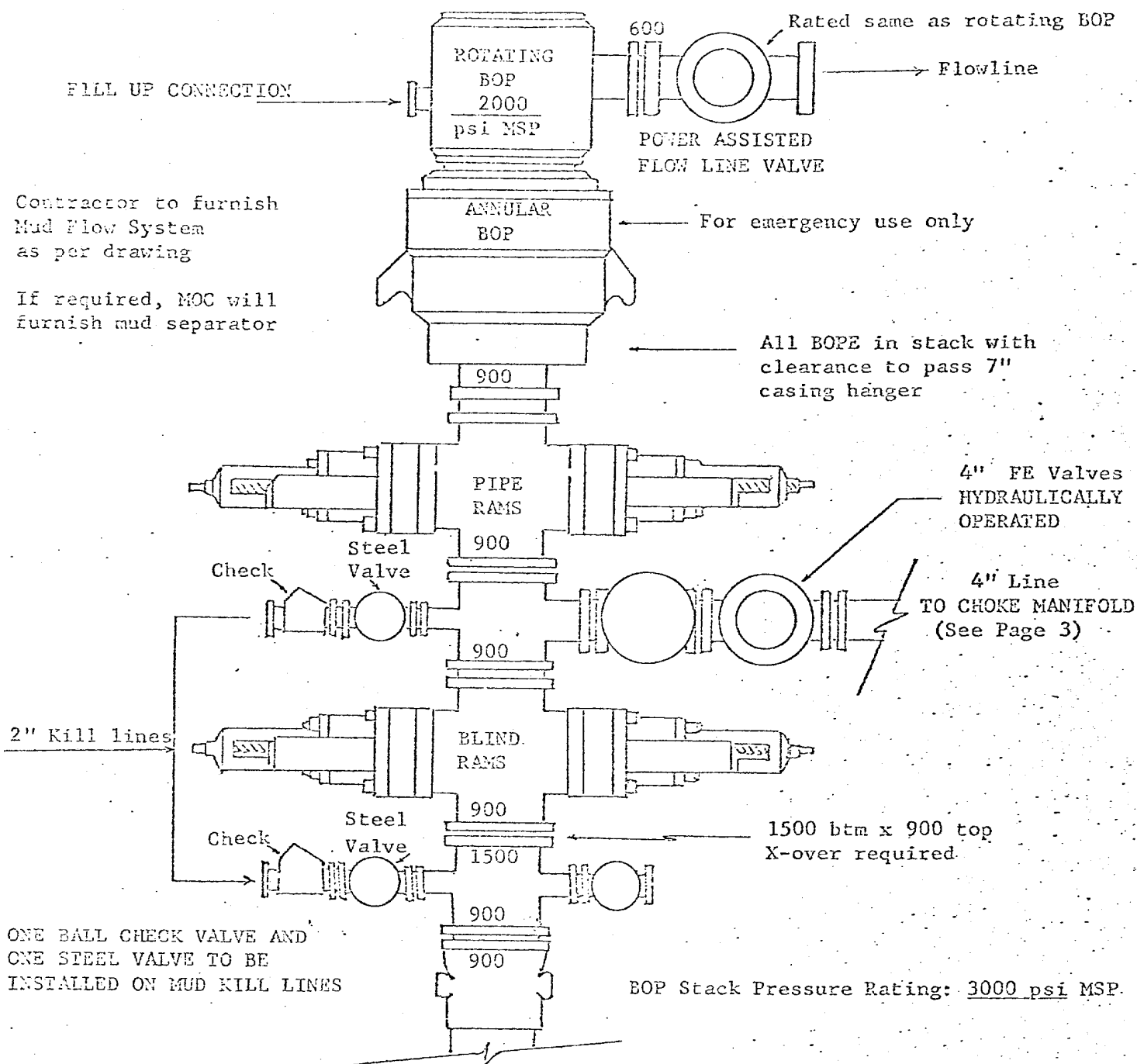
RECEIVED
MAY 29 1974
ARTESIA, NEW MEXICO
SURVEY

SOUTH CARLESTAD AREA
= DRILLING PROGRAM =
MINIMUM BOP REQUIREMENTS

Prepared by: RDY

Date: 1-11-73

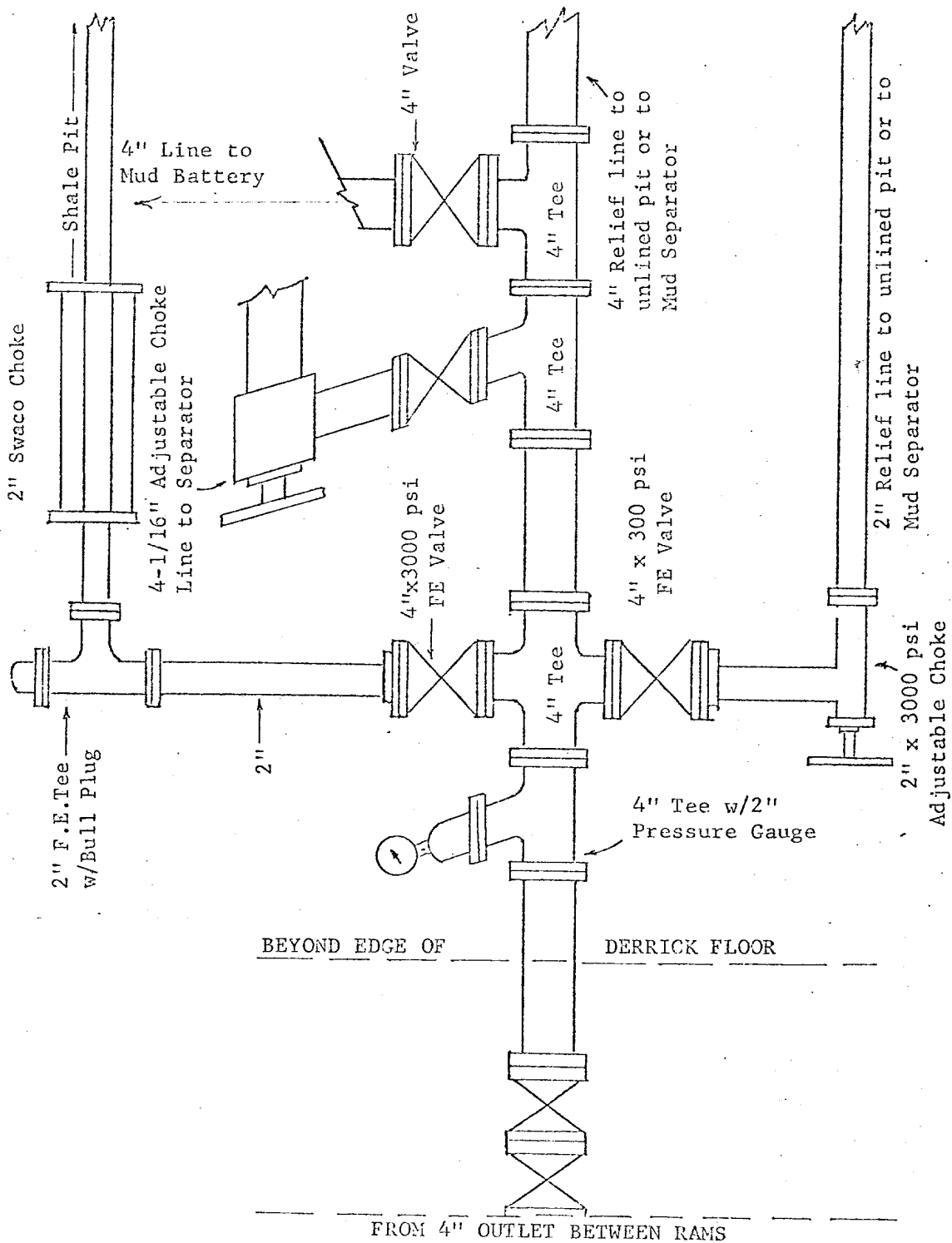
Page 3 of 4



THE FOLLOWING CONSTITUTE MINIMUM BLOWOUT PREVENTER REQUIREMENTS

1. ALL PREVENTERS TO BE HYDRAULICALLY OPERATED WITH SECONDARY MANUAL CONTROLS INSTALLED PRIOR TO DRILLING OUT FROM UNDER CASING.
2. CHOKE OUTLET TO BE A MINIMUM OF 4" DIAMETER.
3. KILL LINE TO BE OF ALL STEEL CONSTRUCTION OF 2" MINIMUM DIAMETER.
4. OPENING BETWEEN RAMS TO BE FLANGED, STUDDED, OR CLAMPED.
5. ALL CONNECTIONS FROM OPERATING MANIFOLDS TO PREVENTERS TO BE ALL STEEL HOSE OR TUBE A MINIMUM OF ONE INCH IN DIAMETER.

7. ALL CONNECTIONS TO AND FROM PREVENTER TO HAVE A PRESSURE RATING EQUIVALENT TO THAT OF THE B.O.P.'s.
8. UPPER & LOWER KELLY COCK TO BE INSTALLED ON KELLY. USE RUD SCREEN IN LOWER VALVE.
9. INSIDE BLOWOUT PREVENTER TO BE AVAILABLE ON RIG FLOOR.
10. MAIN OPERATING CONTROLS - ONE LOCATED BY DRILLERS POSITION AND THE OTHER LOCATED A SAFE DISTANCE FROM THE RIG FLOOR.
11. FILL LINE FOR EMERGENCY USE ONLY - NOT TO BE USED FOR FILL UP.
12. REMOVING VALVES FOR ALL CONNECTIONS IN DRILL STRING TO BE LOCATED ON RIG FLOOR.
13. HOSE MUST BE KEPT RIGID ON TRIPS BELOW INTERMEDIATE CASING. OPERATOR NOT RESPONSIBLE FOR DEVIATIONS RESULTING FROM NOT KEEPING HOSE RIGID.
14. PIPE FLOW MUST BE INSTALLED AND USED BELOW ZONE OF FIRST GAS INTRUSION, OR



MUD PROGRAM

Surface (0-400'): FW-bentonite-lime, no LCM. Drill through steel pits. No water loss control.

Intermediate (400-2500'): Cut-brine (9.5#/gal). Circulate inner (lined) reserve pit. No LCM "filler" permitted. If hazardous loss occurs, batch in a 50 bbl slug of PHB carrying pill of LCM, continue drilling.

Protective (2500-11000): Drill with fresh water until significant gas flow occurs. Displace with 10%-10.2% pot ash brine at 10,000' or when hazardous gas flows are encountered. If a weighted fluid is required for trip margin, raise viscosity to 32 sec. with prehydrated bentonite. Increase weight slowly, while drilling. Circulate gas off from gas-cut mud through chokes at minimum back pressure, prior to making trips. If possible, continue drilling with brine only. If a fluid weight above 10.2#/gal. is required, do not mix soda ash. Rely on PHB, and barite as required. If no gas is encountered, drill ahead with brine only.

Liner (11000-12000'):

1. If 7" casing is set at 11000', drill with a PAL-mix or an XC polymer system, for good hole stability, penetration rates, and Morrow protection. Maintain a 0-solids control with an 80-mesh shaker and a 6-cone desilter.
2. If 7" casing not required, and a brine water system is in use, add starch to lower the fluid loss to 5 cc. below 11300'. If a PHB system is being used, drop the water loss with low viscosity drispac. Maintain weight as low as the open hole will allow for trips.

SURFACE DEVELOPMENT PLAN

Midwest Oil Corporation
Federal "P" No. 1
2180' FSL & 1980' FEL
Sec. 34, T22S, R26E
Eddy County, New Mexico

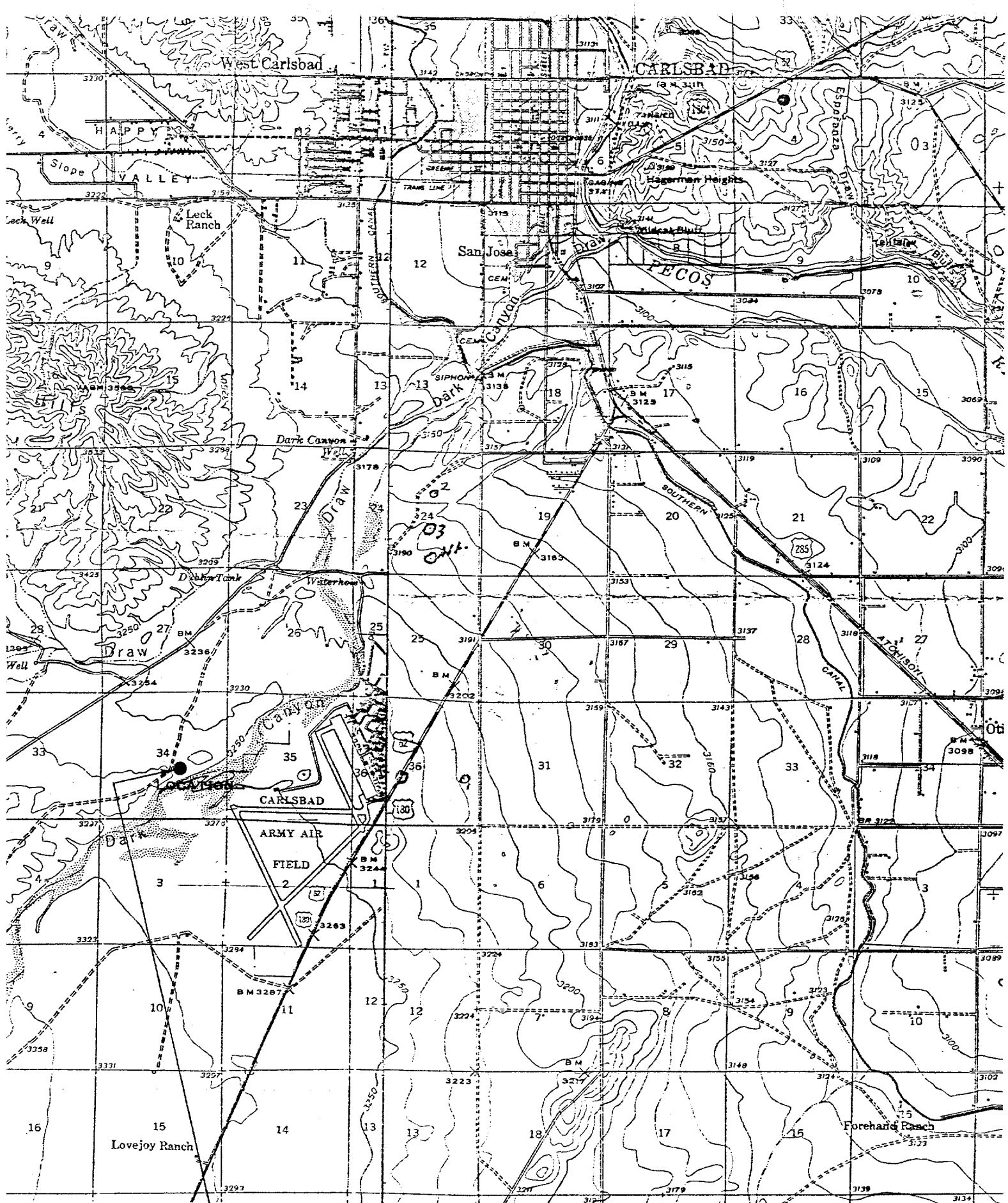
1. Existing roads - See attached map.
2. Planned access roads - See attached plat.
3. Location of wells - No. 1 Federal "L" Unit approximately 1 1/4 miles west.
4. Lateral roads to well locations - See attached map.
5. Tank batteries and flow lines will be located on well pad.
6. Water supply - Water to be supplied by trucks.
7. Waste disposal - All paper, metal, wood and other waste material will be collected and disposed of in a waste collection pit located northwest of the pad's edge. The waste pit will be covered when the drilling and completion operation is finalized.
8. Produced brine water will be collected in a metal tank & trucked to the nearest available salt water disposal facility.
9. Produced oil will be sold through the best available market in the area.
10. Location layout - See attached plat.
11. Restoration of surface - Reserve pits will be levelled & smoothed after drying. The area will be cleaned of all waste & restored as nearly as possible to its original contour.
12. Blowout preventer equipment will be installed when surface casing is set.

Mud Program attached.

Bonnie Husband
Bonnie Husband

Production Clerk

5-28-74



MIDWEST OIL CORPORATION FEDERAL "P" No. 1
 2180 FROM THE SOUTH LINE & 1980 FROM THE EAST LINE
 SECTION 34, TOWNSHIP 22 SOUTH, RANGE 26 EAST

ERRY COUNTY, NEW MEXICO

8'
3 5' deep
Waste Pit

