

NE MEXICO OIL CONSERVATION COMMISSION
WELL LOCATION AND ACREAGE DEDICATION PLAT

SF.
File
USDS
Form C-102
Supersedes C-12F
Effective 1-1-65

All distances must be from the outer boundaries of the Section.

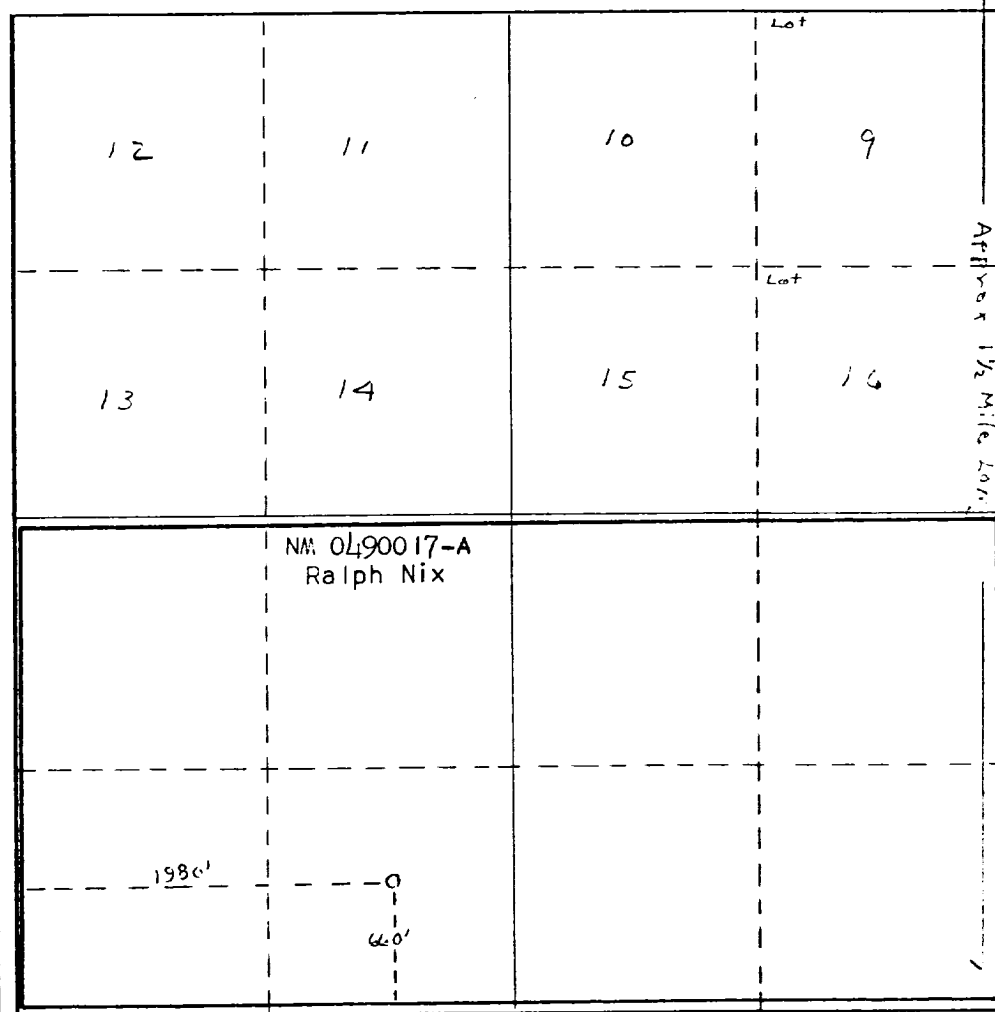
Operator Ralph Nix ✓		Lease Fasken Federal		Well No. 2
Unit Letter V	Section 5	Township 21-S	Range 26-E	County Eddy
Actual Postage Location of Well: 660' feet from the South line and 1980 feet from the West line				
Ground Level Elev. 3213	Producing Formation Atoka	Pool Wildcat Avalon Atoka	Dedicated Acreage: 320 Acres	

- Outline the acreage dedicated to the subject well by color **RECEIVED** or hatchure marks on the plat below.
- If more than one lease is dedicated to the well, outline each and identify the ownership thereof (both as to working interest and royalty). **JAN 14 1980**
- If more than one lease of different ownership is dedicated to the well, have the interests of all owners been consolidated by communitization, unitization, force-pooling, etc? **O. C. D. ARTESIA OFFICE**

☐ Yes ☐ No If answer is "yes," type of consolidation _____

If answer is "no," list the owners and tract descriptions which have actually been consolidated. (Use reverse side of this form if necessary.) _____

No allowable will be assigned to the well until all interests have been consolidated (by communitization, unitization, forced-pooling, or otherwise) or until a non-standard unit, eliminating such interests, has been approved by the Commission.



CERTIFICATION

I hereby certify that the information contained herein is true and complete to the best of my knowledge and belief.

Dalton Kincheloe

Name
Dalton Kincheloe

Position
Agent

Company
Ralph Nix

Date
Dec. 28, 1979

I hereby certify that the well location shown on this plat was plotted from field notes of actual surveys made by me or under my supervision, and that the same is true and correct to the best of my knowledge and belief.

See Dedication Plat filed
May 29, 1974

Date Surveyed

Registered Professional Engineer
and/or Land Surveyor

Certificate No.

