

Form 100-10  
(May 1963)

N. M. O. C. C. (Other instructions on reverse side)

30-015-21264  
Form Approved  
Budget Bureau No. 42 R1400

UNITED STATES  
DEPARTMENT OF THE INTERIOR  
GEOLOGICAL SURVEY

APPLICATION FOR PERMIT TO DRILL, DEEPEN, OR PLUG BACK

1a. TYPE OF WORK

DRILL ☒

DEEPEN ☐

PLUG BACK ☐

b. TYPE OF WELL

OIL  
WELL ☒

GAS  
WELL ☐

OTHER

SINGLE  
ZONE ☐

MULTIPLE  
ZONE ☐

2. NAME OF OPERATOR

Robert N. Enfield

3. ADDRESS OF OPERATOR

P. O. Box 2431, Santa Fe, New Mexico 87501

4. LOCATION OF WELL (Report location clearly and in accordance with any State requirements.)\*

At surface

330' FSL & 2310' FWL

At proposed prod. zone

Capitan

RECEIVED

JUL 1 1974

O. C. C.

ARTESIA, OFFICE

14. DISTANCE IN MILES AND DIRECTION FROM NEAREST TOWN OR POST OFFICE\*

six (6) miles west of Carlsbad

16. DISTANCE FROM PROPOSED\*

LOCATION TO NEAREST  
PROPERTY OR LEASE LINE, FT.  
(Also to nearest drlg. unit line, if any)

330'

18. NO. OF ACRES IN LEASE

403.01

17. NO. OF ACRES ASSIGNED  
TO THIS WELL

40

18. DISTANCE FROM PROPOSED LOCATION\*  
TO NEAREST WELL, DRILLING, COMPLETED,  
OR APPLIED FOR, ON THIS LEASE, FT.

None

19. PROPOSED DEPTH

800'

20. ROTARY OR CABLE TOOLS

Cable tools

21. ELEVATIONS (Show whether DF, RT, GR, etc.)

GR 3440

22. APPROX. DATE WORK WILL START\*

June 25, 1974

23.

PROPOSED CASING AND CEMENTING PROGRAM

SIZE OF HOLE	SIZE OF CASING	WEIGHT PER FOOT	SETTING DEPTH	QUANTITY OF CEMENT
10"	8 5/8	24#	100'	Circ. to surface
7 7/8"	4 1/2	9.5#	800	100 sx.

IN ABOVE SPACE DESCRIBE PROPOSED PROGRAM: If proposal is to deepen or plug back, give data on present productive zone and proposed new productive zone. If proposal is to drill or deepen directionally, give pertinent data on subsurface locations and measured and true vertical depths. Give blowout preventer program if any.

24.

SIGNED

TITLE

Operator

DATE

6/19/74

(This space for Federal or State office use)

PERMIT NO.

APPROVING DATE

DATE

RECEIVED  
JUN 26 1974  
U. S. GEOLOGICAL SURVEY  
ARTESIA, NEW MEXICO

APPROVED BY

CONDITIONS OF APPROVAL ANY:

JUN 28 1974

R. L. BEEKMAN

ARTING DISTRICT ENGINEER

THIS APPROVAL IS RESCINDED IF OPERATIONS  
NOT COMMENCED WITHIN 3 MONTHS.

SEP 28 1974

See Instructions On Reverse Side

## WELL LOCATION AND ACREAGE DEDICATION PLAT

Effective 1-1-65

All distances must be from the outer boundaries of the Section.

Operator <i>Robert N. Enfield</i>			Lease <i>Kempner Federal</i>			Well No. <i>1</i>		
Unit Letter <i>N</i>	Section <i>18</i>	Township <i>22 South</i>	Range <i>26 East</i>	County <i>Eddy</i>				
Actual Footage Location of Well: <i>330</i> feet from the <i>South</i> line and <i>2310</i> feet from the <i>West</i> line								
Ground Level Elev: <i>3440</i>		Producing Formation <i>Capitan</i>		Pool <i>Wildcat</i>		Dedicated Acreage: <i>40</i> Acres		

1. Outline the acreage dedicated to the subject well by colored pencil or hachure marks on the plat below.
2. If more than one lease is dedicated to the well, outline each and identify the ownership thereof (both as to working interest and royalty).
3. If more than one lease of different ownership is dedicated to the well, have the interests of all owners been consolidated by communitization, unitization, force-pooling, etc?

☐ Yes ☐ No If answer is "yes," type of consolidation \_\_\_\_\_

If answer is "no," list the owners and tract descriptions which have actually been consolidated. (Use reverse side of this form if necessary.) \_\_\_\_\_

No allowable will be assigned to the well until all interests have been consolidated (by communitization, unitization, forced-pooling, or otherwise) or until a non-standard unit, eliminating such interests, has been approved by the Commission.

R26E

18

2310

330

## CERTIFICATION

I hereby certify that the information contained herein is true and complete to the best of my knowledge and belief.

Name  
*Robert N. Enfield*

Position  
Operator

Company

Date  
*6/18/74*

RECEIVED  
I hereby certify that the well location shown on this plat was obtained from field notes of actual surveys made by me or under my supervision and that the same is true and correct to the best of my knowledge and belief.

JAMES H. BROWN

Date Surveyed  
*June 14th 1974*  
Registered Professional Engineer  
and/or Land Surveyor

*James H. Brown*  
Certificate No.  
*542*

0 330 660 990 1320 1650 1980 2310 2640 2000 1500 1000 500

DEVELOPMENT PLAN FOR SURFACE USE filed in connection with the application to drill the Robert N. Enfield No. 1 Kempner-Federal, 330' FS & 2310' FWL of Section 18, T22S R26E, Eddy County, New Mexico.

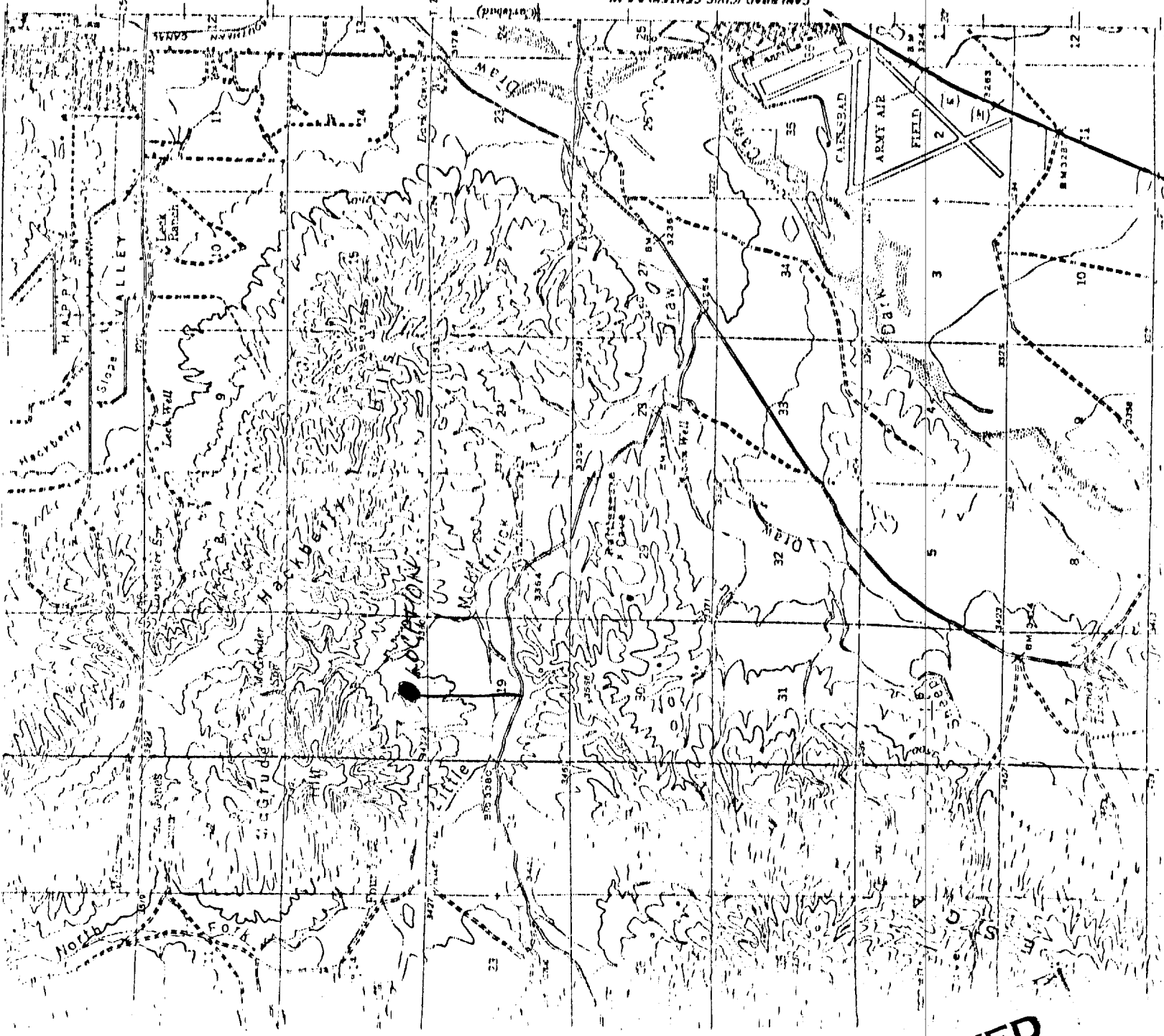
1. Topographic map showing existing roads in area, the location and planned access road to the well. The access road will be 10' wide and approximately 2,000' long, and will not be surfaced.
2. Land map showing location of all wells in the area and this location.
3. Location of tank batteries, if needed, will be on the drilling location.
4. Water will be hauled from the nearest commercial source. ....
5. Wastes will be disposed of in the pit.
6. No camp or airstrips are planned.
7. Surface will be restored in accordance with the regulations.
8. Surface is dry grazing land which is sandy with caliche near the surface.

RECEIVED

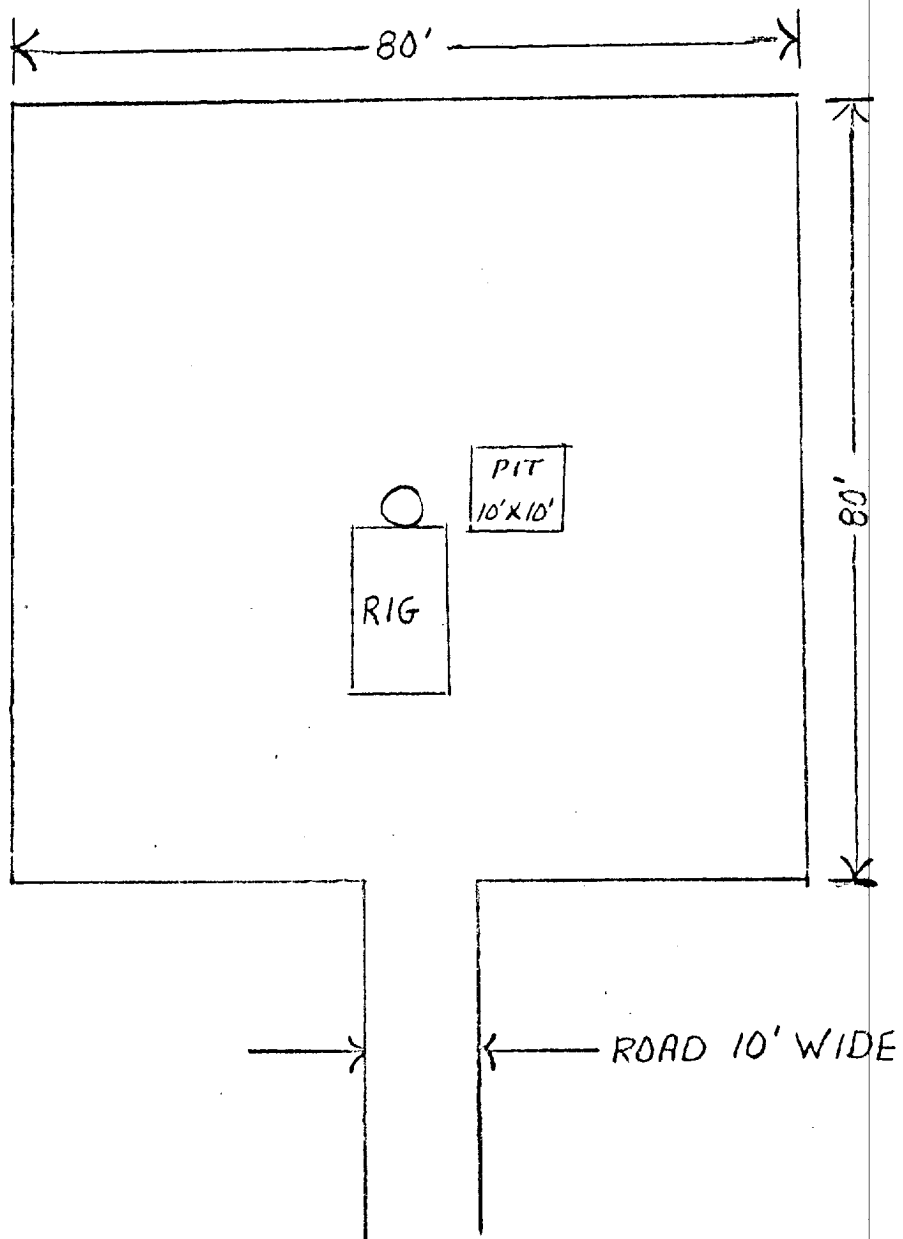
JUN 26 1974

U. S. GEOLOGICAL SURVEY  
ARTESIA, NEW MEXICO

CARLSBAD (GIVE CENTER) 8.8 MI  
HOURS 7.8 MI



RECEIVED  
JUN 9 1974  
U.S. GEOLOGICAL SURVEY  
ARTESIA, NEW MEXICO



Location plat showing size of location, pit, rig and road on the Robert N. Enfield No. 1 Kempner-Federal, 330' FS & 2310' FWL of Section 18, T22S, R26E, Eddy County, New Mexico.

**RECEIVED**  
 JUN 26 1974  
 U.S. GEOLOGICAL SURVEY  
 ARTESIA, NEW MEXICO