

MEXICO OIL CONSERVATION COMMISSION
WELL LOCATION AND ACREAGE DEDICATION PLAT

Form C-102
Supersedes C-128
Effective 1-1-55

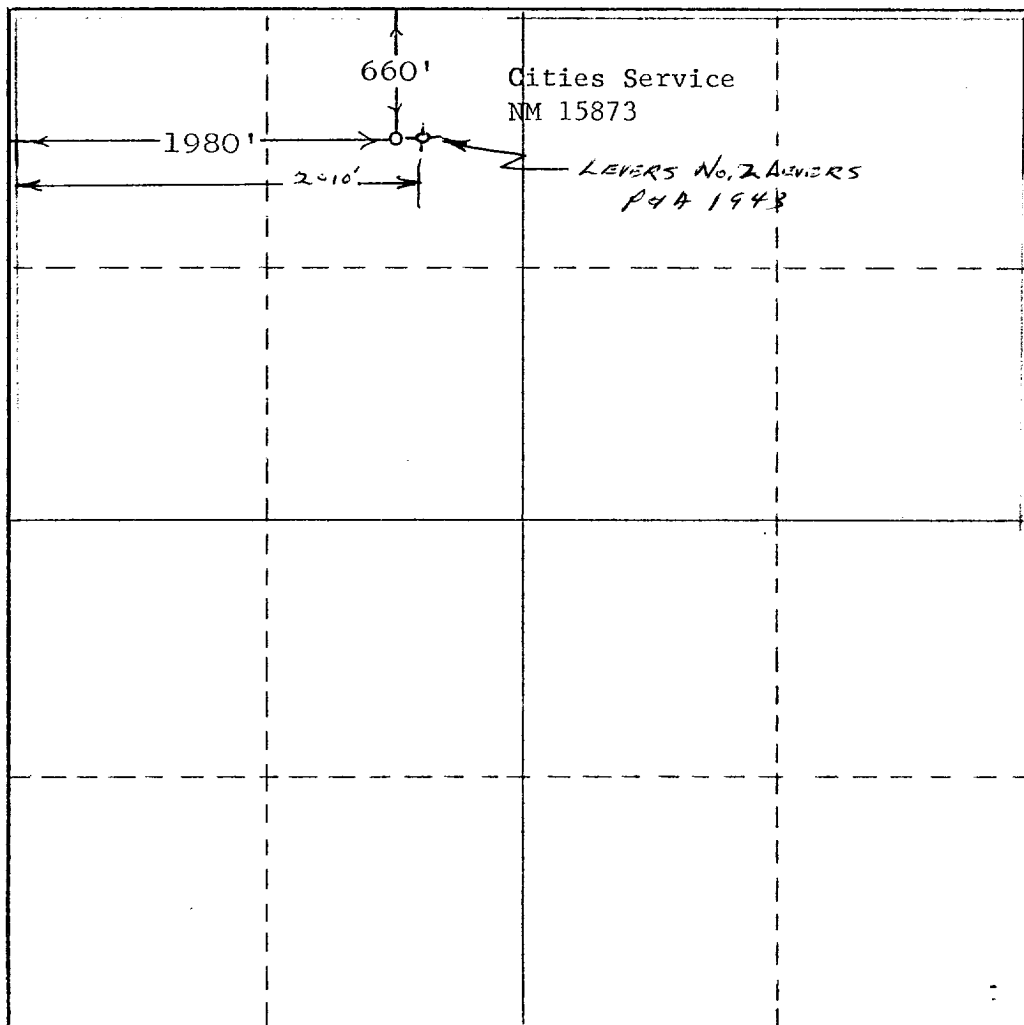
All distances must be from the outer boundaries of the Section.

Operator MONSANTO COMPANY			Lease Burton Flat		Well No. 12
Unit Letter C	Section 26	Township 20-S	Range 28-E	County Eddy	
Actual Footage Location of Well: 660 feet from the North line and 1980 feet from the West line					
Ground Level Elev. 3243'	Producing Formation Morrow		Pool Undesignated		Dedicated Acreage: 320 Acres

1. Outline the acreage dedicated to the subject well by colored pencil or hachure marks on the plat below.
2. If more than one lease is dedicated to the well, outline each and identify the ownership thereof (both as to working interest and royalty).
3. If more than one lease of different ownership is dedicated to the well, have the interests of all owners been consolidated by ~~communitization, unitization, forced-pooling, or otherwise~~ **Monsanto Company (Operator)**
Burton Flat Deep Unit
☒ Yes ☐ No If answer is "yes," type of consolidation **14-08-001-12391**

If answer is "no," list the owners and tract descriptions which have actually been consolidated. (Use reverse side of this form if necessary.)

No allowable will be assigned to the well until all interests have been consolidated (by communitization, unitization, forced-pooling, or otherwise) or until a non-standard unit, eliminating such interests, has been approved by the Commission.



CERTIFICATION

I hereby certify that the information contained herein is true and complete to the best of my knowledge and belief.

Name **E. M. Scholl**
Position **District Production Mgr.**
Company **MONSANTO COMPANY**
Date **July 12, 1974**

RECEIVED

I hereby certify that the well location shown on this plat was plotted from field notes of actual surveys made by me or under my supervision, and that the same is true and correct to the best of my knowledge and belief.

November 23, 1973

Date Surveyed **Richard B. Duniven**

Registered Professional Engineer and/or Land Surveyor

Richard B. Duniven
Certificate No.

4882