

NEW MEXICO OIL CONSERVATION COMMISSION
WELL LOCATION AND ACREAGE DEDICATION PLAT

Form C-102
Supersedes C-124
Effective 1-1-65

All distances must be from the outer boundaries of the Section.

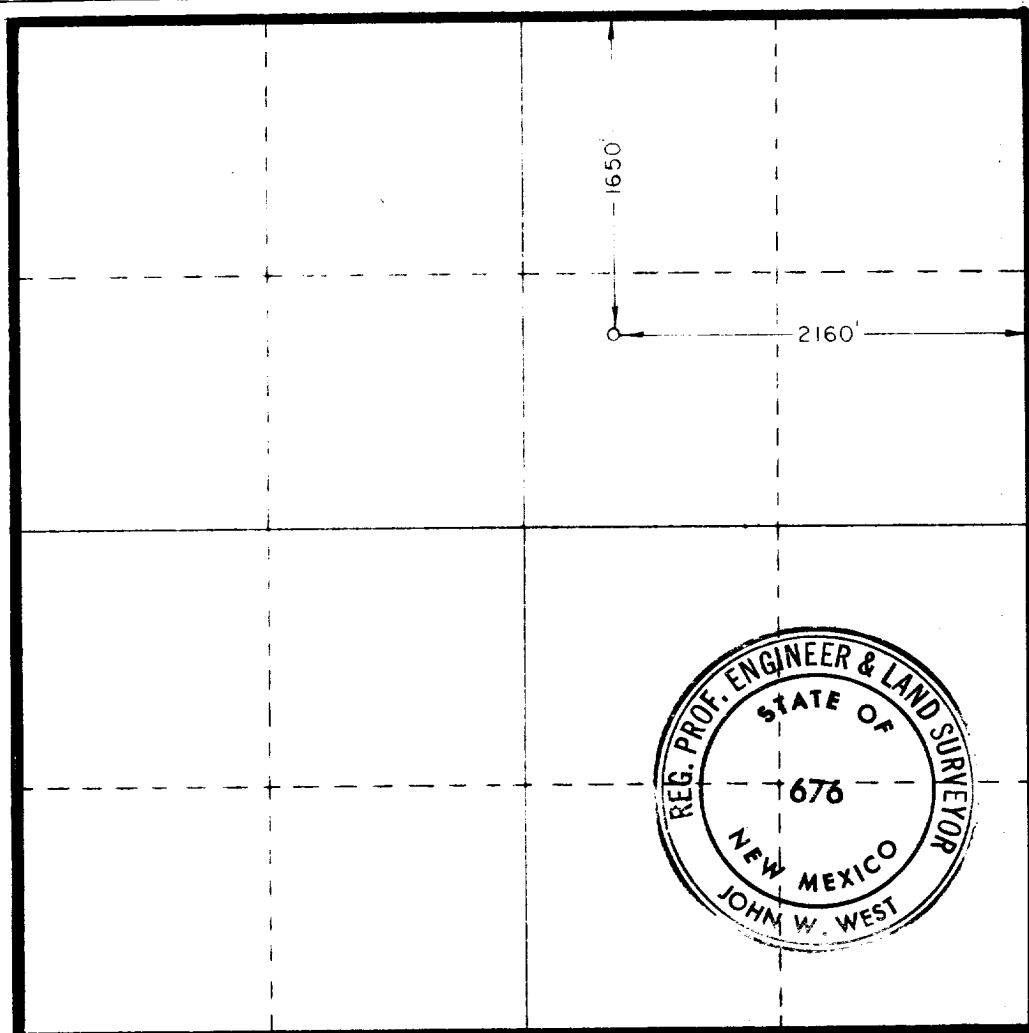
Operator MEADCO PROPERTIES, LTD.		Lease LARIO FEDERAL		Well No. 1
Tract Letter G	Section 17	Township 20 SOUTH	Range 27 EAST	County EDDY
Actual Postage Location of Well. 1650 feet from the NORTH line and 2160 feet from the EAST line				
Ground Level Elev. 3633.1	Producing Formation Morrow	Pool <i>Unit McMillan Morrow Gas</i>	Dedicated Acreage: 640	

1. Outline the acreage dedicated to the subject well by colored pencil or hachure marks on the plat below.
2. If more than one lease is dedicated to the well, outline each and identify the ownership thereof (both as to working interest and royalty)
3. If more than one lease of different ownership is dedicated to the well, have the interests of all owners been consolidated by communitization, unitization, force-pooling, etc?

☒ Yes ☐ No If answer is "yes," type of consolidation Communitized if productive

If answer is "no," list the owners and tract descriptions which have actually been consolidated (Use reverse side of this form if necessary.) _____

No allowable will be assigned to the well until all interests have been consolidated (by communitization, unitization, forced-pooling, or otherwise) or until a non-standard unit, eliminating such interests, has been approved by the Commission.



CERTIFICATION

I hereby certify that the information contained herein is true and complete to the best of my knowledge and belief

Bill C. Cotner

Name
Bill C. Cotner

Position
Agent

Company
Meadco Properties, Ltd.

Date
June 27, 1974

RECEIVED
JUL 3 1974
I have verified that the well location shown on this plat was obtained from field notes of actual surveys made by me or under my supervision and the same is true and correct to the best of my knowledge and belief.
U.S. GEOLOGICAL SURVEY
ARTESIA, NEW MEXICO

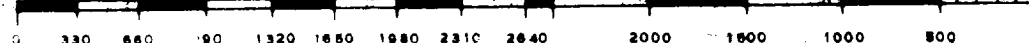
Date Surveyed

JUNE 15, 1974

Registered Professional Engineer and/or Land Surveyor

John W. West

Certificate No. **676**



RECEIVED
JUN 19 1974