

UNITED STATES  
DEPARTMENT OF THE INTERIOR  
GEOLOGICAL SURVEY

30-015-21325

U.S. DEPARTMENT OF THE INTERIOR

LC 067144

U.S. DEPARTMENT OF THE INTERIOR

U.S. DEPARTMENT OF THE INTERIOR

Big Eddy

Big Eddy Unit

Big Eddy Unit

Big Eddy Unit

Big Eddy Unit

Big Eddy Unit

Big Eddy Unit

Big Eddy Unit

Big Eddy Unit

Big Eddy Unit

Big Eddy Unit

Big Eddy Unit

Big Eddy Unit

Big Eddy Unit

Big Eddy Unit

Big Eddy Unit

Big Eddy Unit

Big Eddy Unit

Big Eddy Unit

Big Eddy Unit

Big Eddy Unit

Big Eddy Unit

Big Eddy Unit

Big Eddy Unit

Big Eddy Unit

Big Eddy Unit

Big Eddy Unit

Big Eddy Unit

Big Eddy Unit

Big Eddy Unit

Big Eddy Unit

Big Eddy Unit

Big Eddy Unit

Big Eddy Unit

Big Eddy Unit

Big Eddy Unit

Big Eddy Unit

Big Eddy Unit

Big Eddy Unit

Big Eddy Unit

Big Eddy Unit

Big Eddy Unit

Big Eddy Unit

Big Eddy Unit

Big Eddy Unit

Big Eddy Unit

Big Eddy Unit

Big Eddy Unit

Big Eddy Unit

Big Eddy Unit

Big Eddy Unit

Big Eddy Unit

Big Eddy Unit

Big Eddy Unit

Big Eddy Unit

Big Eddy Unit

Big Eddy Unit

Big Eddy Unit

Big Eddy Unit

Big Eddy Unit

Big Eddy Unit

Big Eddy Unit

Big Eddy Unit

Big Eddy Unit

Big Eddy Unit

Big Eddy Unit

Big Eddy Unit

Big Eddy Unit

Big Eddy Unit

Big Eddy Unit

Big Eddy Unit

Big Eddy Unit

Big Eddy Unit

Big Eddy Unit

Big Eddy Unit

Big Eddy Unit

Big Eddy Unit

Big Eddy Unit

Big Eddy Unit

Big Eddy Unit

Big Eddy Unit

Big Eddy Unit

Big Eddy Unit

Big Eddy Unit

Big Eddy Unit

RECEIVED

AUG 14 1974

O. C. C.

ARTESIA, OFFICE

APPLICATION FOR PERMIT TO DRILL, DEEPEN, OR PLUG BACK

1. TYPE OF WORK: DRILL ☒ DEEEN ☐ PLUG BACK ☐

2. TYPE OF WELL: OIL ☐ GAS ☒ OTHER ☐ SINGLE ZONE ☐ MULTIPLE ZONE ☐

3. NAME OF OPERATOR: Perry R. Bass

4. ADDRESS OF OPERATOR: P. O. Box 1178, Monahans, Texas 79756

5. LOCATION OF WELL (Report location clearly and in accordance with any State requirements): At surface

1980' FSL & 1980' FEL, unit letter J

At proposed prod. zone

Same

14. DISTANCE IN MILES AND DIRECTION FROM NEAREST TOWN OR POST OFFICE:

12 miles East of Carlsbad, New Mexico

15. DISTANCE FROM PROPOSED LOCATION TO NEAREST PROPERTY OR LEASE LINE, FT. (Also to nearest orig. unit line, if any.)

1980'

16. NO. OF ACRES IN LEASE: 2553.61

17. NO. OF ACRES ASSIGNED TO THIS WELL: 320

18. DISTANCE FROM PROPOSED LOCATION TO NEAREST WELL, DRILLING, COMPLETED, OR APPLIED FOR, ON THIS LEASE, FT.

First this Sec.

19. PROPOSED DEPTH: 13000

20. ROTARY OR CABLE TOOLS: Rotary

21. ELEVATIONS (Show whether DF, RT, GR, etc.):

22. APPROX. DATE WORK WILL START: On Approval

23. PROPOSED CASING AND CEMENTING PROGRAM

| SIZE OF HOLE | SIZE OF CASING | WEIGHT PER FOOT | SETTING DEPTH | QUANTITY OF CEMENT   |
|--------------|----------------|-----------------|---------------|----------------------|
| 24"          | 20"            | 94#             | 30'           | Redi-Mix             |
| 15"          | 11 3/4"        | 42#             | 450'          | Suff to circ annulus |
| 11"          | 8 5/8"         | 28#             | 3250          | Suff to circ annulus |
| 7 7/8"       | 5 1/2"         | 20 & 17#        | 13000         | Suff to reach 8000'  |

\* Application for water well permit is attached.

RECEIVED

IN ABOVE SPACE DESCRIBE PROPOSED PROGRAM: If proposal is to deepen or plug back, give data on present productive zone and proposed new productive zone. If proposal is to drill or deepen directionally, give pertinent data on subsurface locations and measured and true vertical depths. Give blowout preventer program, if any.

24. SIGNED: Robert L. Hanna TITLE: Division Waterflood Eng. DATE: July 26, 1974

(This space for Federal or State office use)

APPROVED  
APPROVED BY: R. L. Beckman  
ACTING DISTRICT ENGINEER

SUBJECT TO ATTACHED DEEP WELL CONTROL REQUIREMENTS

DATED JUN 22 1973

THIS APPROVAL IS RESCINDED IF OPERATIONS ARE NOT COMMENCED WITHIN 6 MONTHS. See Instructions On Reverse Side  
NOV 12 1974

**NEW MEXICO OIL CONSERVATION COMMISSION**  
**WELL LOCATION AND ACREAGE DEDICATION PLAT**

Form C-101  
 Supersedes C-128  
 Effective 1-1-65

All distances must be from the outer boundaries of the Section

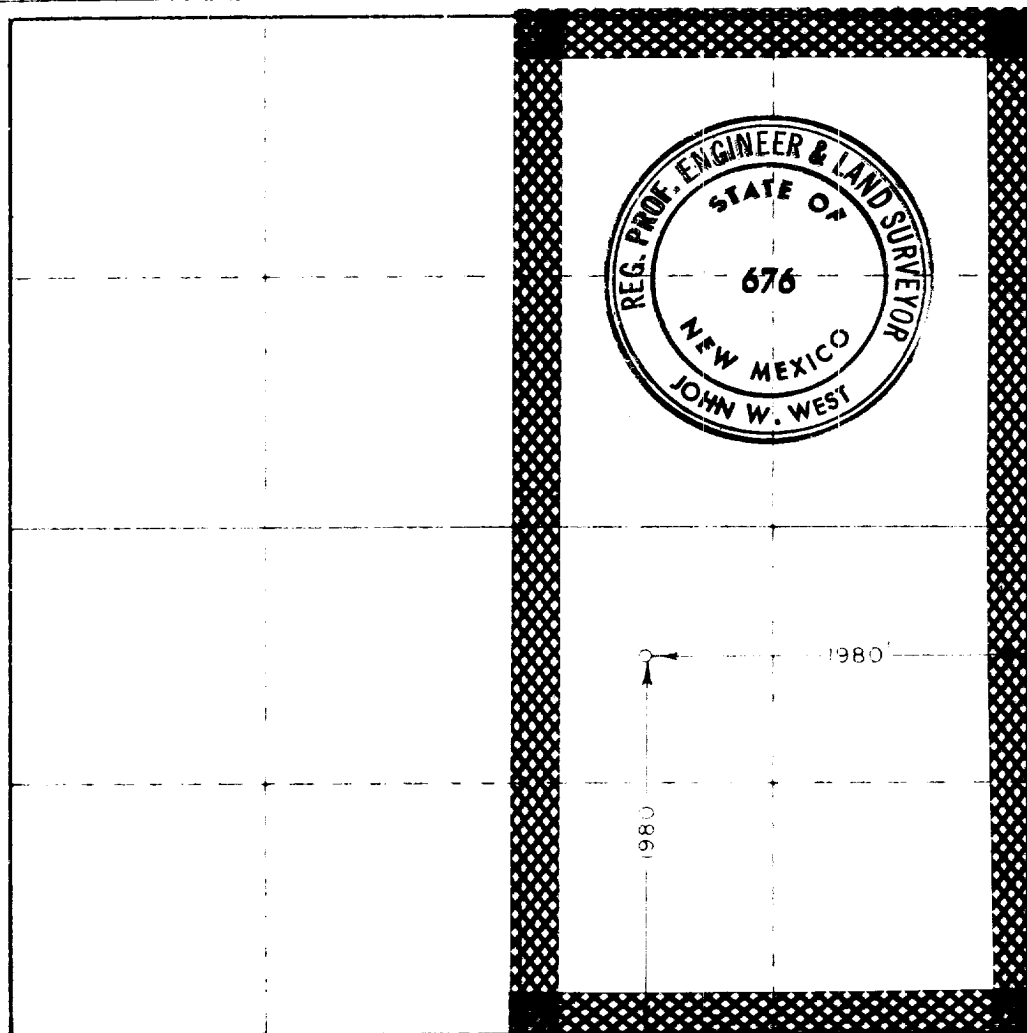
|                                    |                                      |                               |                                 |                       |
|------------------------------------|--------------------------------------|-------------------------------|---------------------------------|-----------------------|
| Operator<br><b>Perry R. Bass</b>   |                                      | Lease<br><b>Big Eddy Unit</b> |                                 | Well No.<br><b>41</b> |
| Section<br><b>J</b>                | Section<br><b>35</b>                 | Township<br><b>21 South</b>   | Range<br><b>28 East</b>         | County<br><b>Eddy</b> |
| Actual location of Well            |                                      |                               |                                 |                       |
| <b>1980</b>                        | feet from the <b>South</b>           | <b>1980</b>                   | feet from the <b>East</b>       |                       |
| Ground Level Elev<br><b>3178.4</b> | Producing Formation<br><b>Morrow</b> | Permit No.                    | Dedicated Acreage<br><b>320</b> |                       |

1. Outline the acreage dedicated to the subject well by colored pencil or hatchure marks on the plat below.
2. If more than one lease is dedicated to the well, outline each and identify the ownership thereof (both as to working interest and royalty).
3. If more than one lease of different ownership is dedicated to the well, have the interests of all owners been consolidated by communitization, unitization, force-pooling, etc?

☐ Yes ☐ No If answer is "yes" type of consolidation \_\_\_\_\_

If answer is "no" list the owners and tract descriptions which have actually been consolidated. (Use reverse side of this form if necessary.) \_\_\_\_\_

No allowable will be assigned to the well until all interests have been consolidated (by communitization, unitization, forced-pooling, or otherwise) or until a non-standard unit, eliminating such interests, has been approved by the Commission.



**CERTIFICATION**

I hereby certify that the information contained herein is true and complete to the best of my knowledge and belief.

*Robert L. Thurman*

**ROBERT L. THURMAN**

Position

**DIVISION WATERFLOOD ENGINEER**

Operator

**PERRY R. BASS**

Date

**JULY 31, 1974**

I hereby certify that the well location shown on this plat was plotted from field notes of a true survey made by me or under my supervision, and that the same is true and correct to the best of my knowledge and belief.

**RECEIVED JUL 31 1974 U.S. GEOLOGICAL SURVEY ARTESIA, NEW MEXICO**

Date Surveyed

**July 30, 1974**

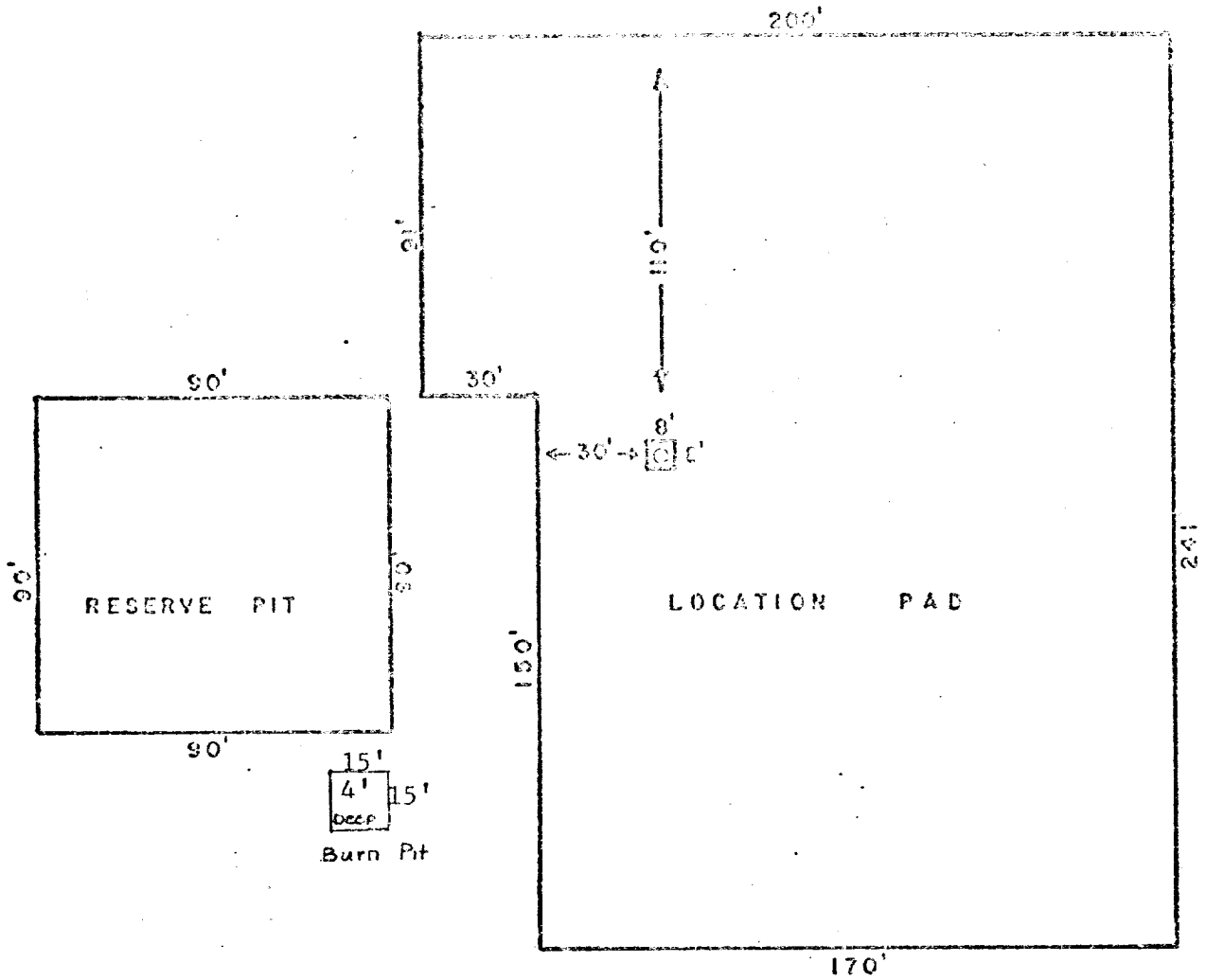
Registered Professional Land Surveyor and State Land Surveyor

*John W. West*

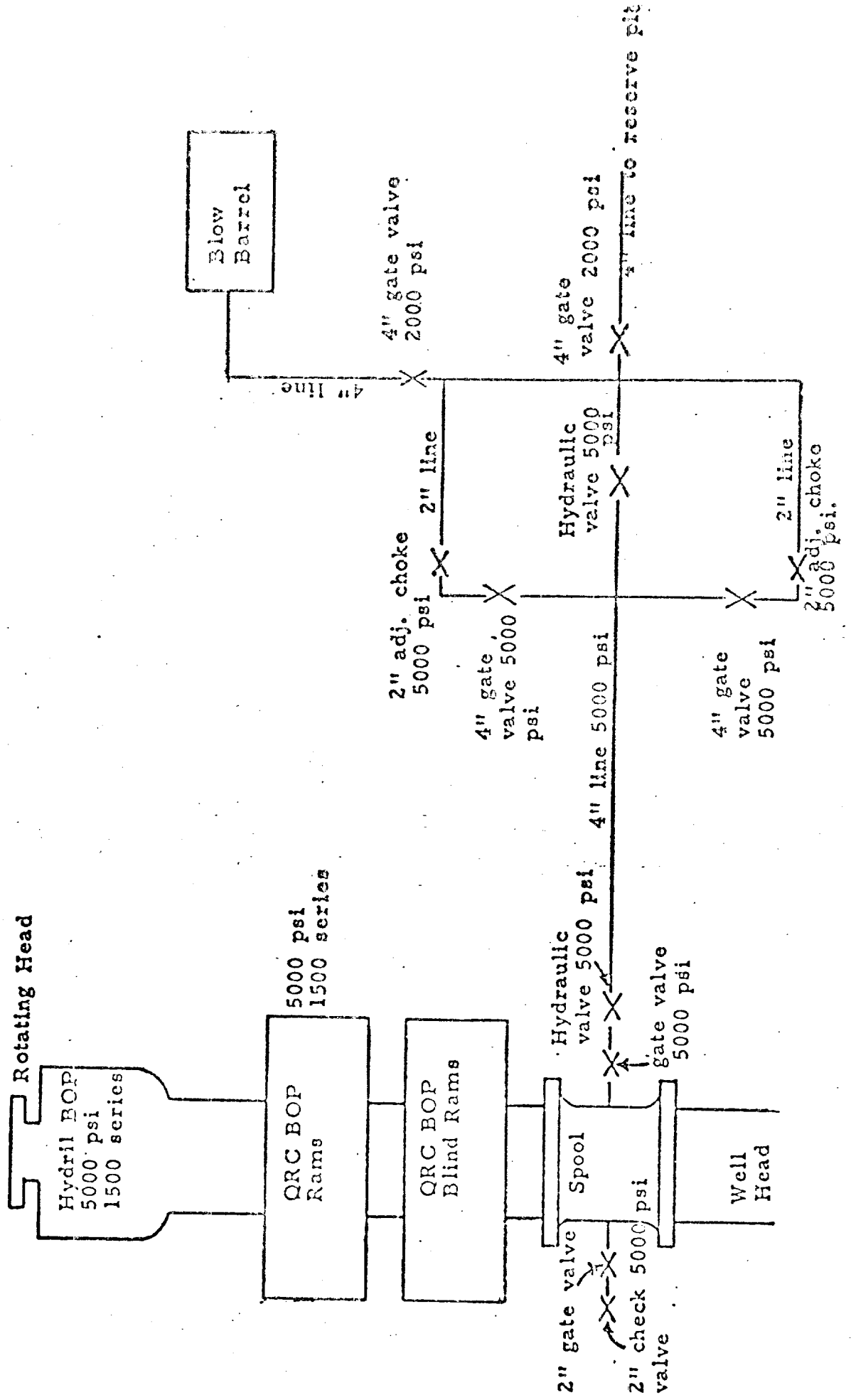
Certificate No.

**676**

0 330 660 990 1320 1650 1980 2310 2640 2970 3300 3630 3960 4290 4620 4950 5280 5610 5940 6270 6600



**RECEIVED**  
AUG - 6 1974  
U. S. GEOLOGICAL SURVEY  
ARTESIA, NEW MEXICO



Mr. Jim Knauf  
U. S. Geological Survey  
Page 2.

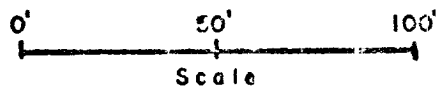
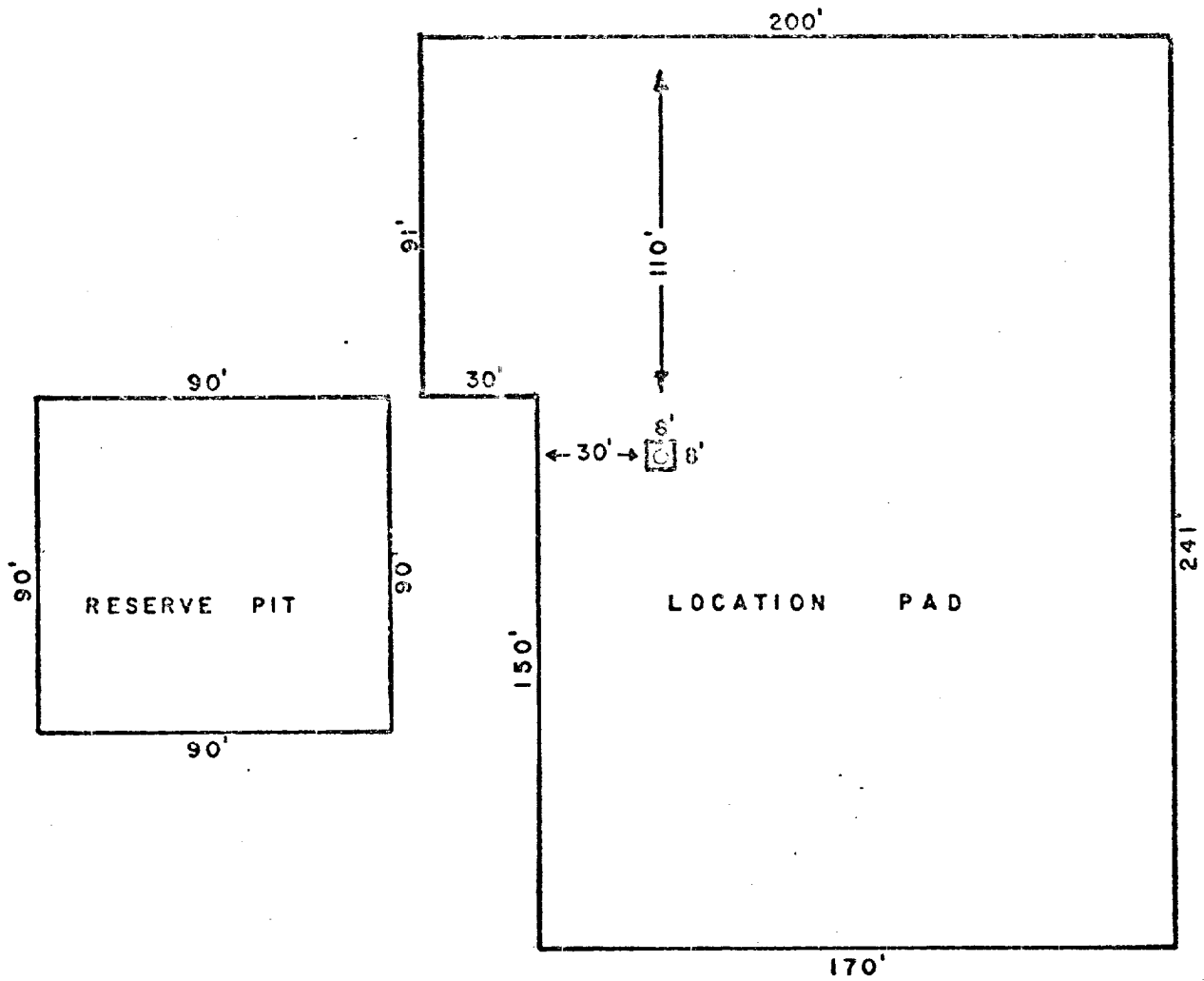
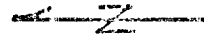
ATTACHMENTS:

1. Form 9-331C, application to drill with complete drilling prognosis.
2. Location plat.
3. Plat of location layout.
4. Small scale map of existing roads with proposed access road.
5. Schematic diagram of BOP equipment, manifold, kill-lines, etc.

In addition, please be advised:

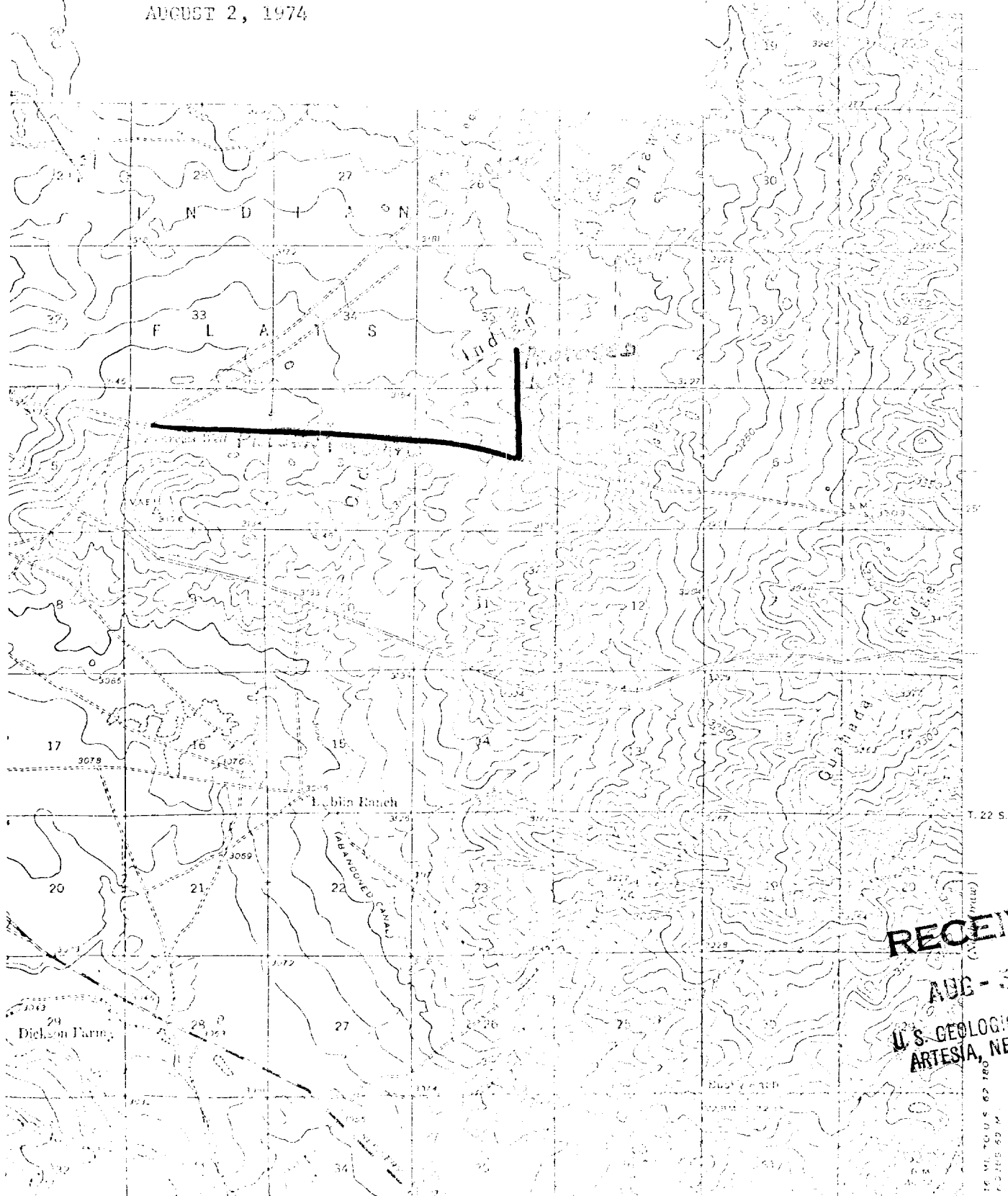
1. Mud pits will be of steel.
2. No camp site or air strip is proposed.
3. Tank battery will be located near or adjacent to a corner of the location pad.
4. Water supply will be trucked to the well, secured from a rancher in the immediate area, or a water well will be drilled near the southwest corner of the location pad.
5. The land surface will be restored to as near original conditions as possible, and to the satisfaction of the U. S. G. S. after drilling and completion operations have ceased.
6. All detrimental waste will be disposed of in accordance with good disposal practices.
7. Well control equipment with 5000 psi choke manifold. The drill pipe BOP's and Hydril BOP's are to be opened and closed daily. The blank BOP's are to be opened and closed each trip.
8. PVT equipment, flow line sensor, and pump stroke counter are to be utilized while drilling the proposed well.

RECEIVED  
U. S. GEOLOGICAL SURVEY  
WASHINGTON, D. C. 20508  
JUL 1 1971



BTG EDDY UNIT #1

AUGUST 2, 1974



RECEIVED

AUG - 8 1974

U.S. GEOLOGICAL SURVEY  
ARTESIA, NEW MEXICO

196 VI. 700 5 62 180