

N. M. O. C. C. COPY  
NEW MEXICO OIL CONSERVATION COMMISSION  
WELL LOCATION AND ACREAGE DEDICATION PLAT

NM 03677  
Form C-102  
Supersedes C-128  
Effective 1-1-65

All distances must be from the outer boundaries of the Section

Texas Oil and Gas Corporation			Lease <b>A</b> Yates Federal "A"		Well No. <b>1</b>
Section <b>F</b>	Section <b>21</b>	Range <b>20 South</b>	Range <b>29 East</b>	County <b>Eddy</b>	
Acreage: 1980 feet from the North line and 1980 feet from the West line Ground Surveyed: <b>3271.3</b> Producing Form: <b>Wolfcamp</b> Pool: <b>Wildcat Wolfcamp</b> Dedicated Acreage: <b>40 320</b> Acres					

1. Outline the acreage dedicated to the subject well by colored pencil or hatchure marks on the plat below.
2. If more than one lease is dedicated to the well, outline each and identify the ownership thereof (both as to working interest and royalty).
3. If more than one lease of different ownership is dedicated to the well, have the interests of all owners been consolidated by communitization, unitization, force-pooling, etc?

**RECEIVED**

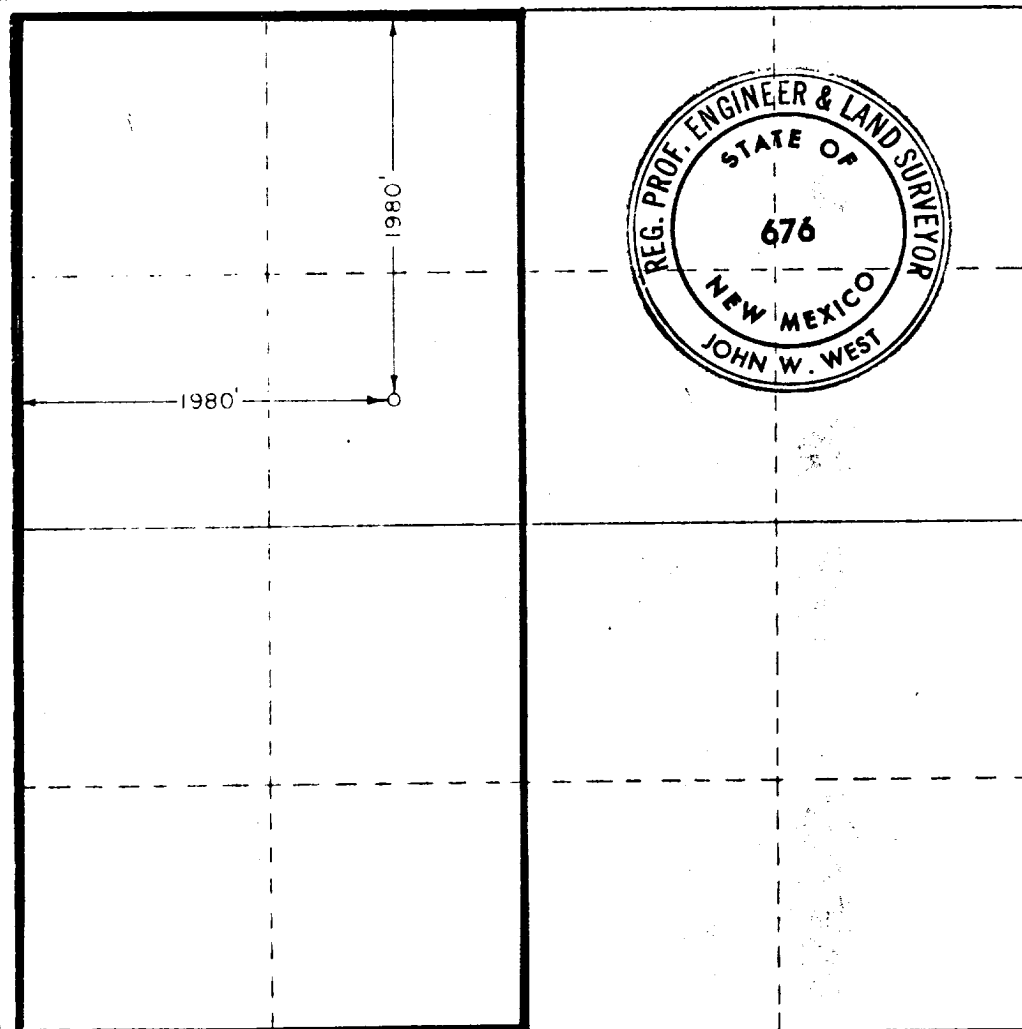
MAR 13 1975

**O. C. C.**  
**ARTESIA, OFFICE**

☐ Yes ☐ No If answer is "yes," type of consolidation \_\_\_\_\_

If answer is "no," list the owners and tract descriptions which have actually been consolidated. (Use reverse side of this form if necessary.) \_\_\_\_\_

No allowable will be assigned to the well until all interests have been consolidated (by communitization, unitization, forced-pooling, or otherwise) or until a non-standard unit, eliminating such interests, has been approved by the Commission.



CERTIFICATION

I hereby certify that the information contained herein is true and complete to the best of my knowledge and belief.

*J. R. Colter*

Name **J. R. Colter**

Position

**Staff Engineer**

Company

**Texas Oil & Gas Corp.**

Date

**March 11, 1975**

**RECEIVED**  
MAR 13 1975  
U.S. GEOLOGICAL SURVEY  
ARTESIA, NEW MEXICO

Date surveyed

**September 28, 1974**

Registered Professional Engineer and/or Land Surveyor

*John W. West*

Certificate No.

**676**

0 330 660 990 1320 1650 1980 2310 2640 2970 3300 0