

MEXICO OIL CONSERVATION COMMISSION
WELL LOCATION AND ACREAGE DEDICATION PLAT

Form 1-1972
Supersedes 1-128
Effective 1-1-75

All distances must be from the outer boundaries of the Section

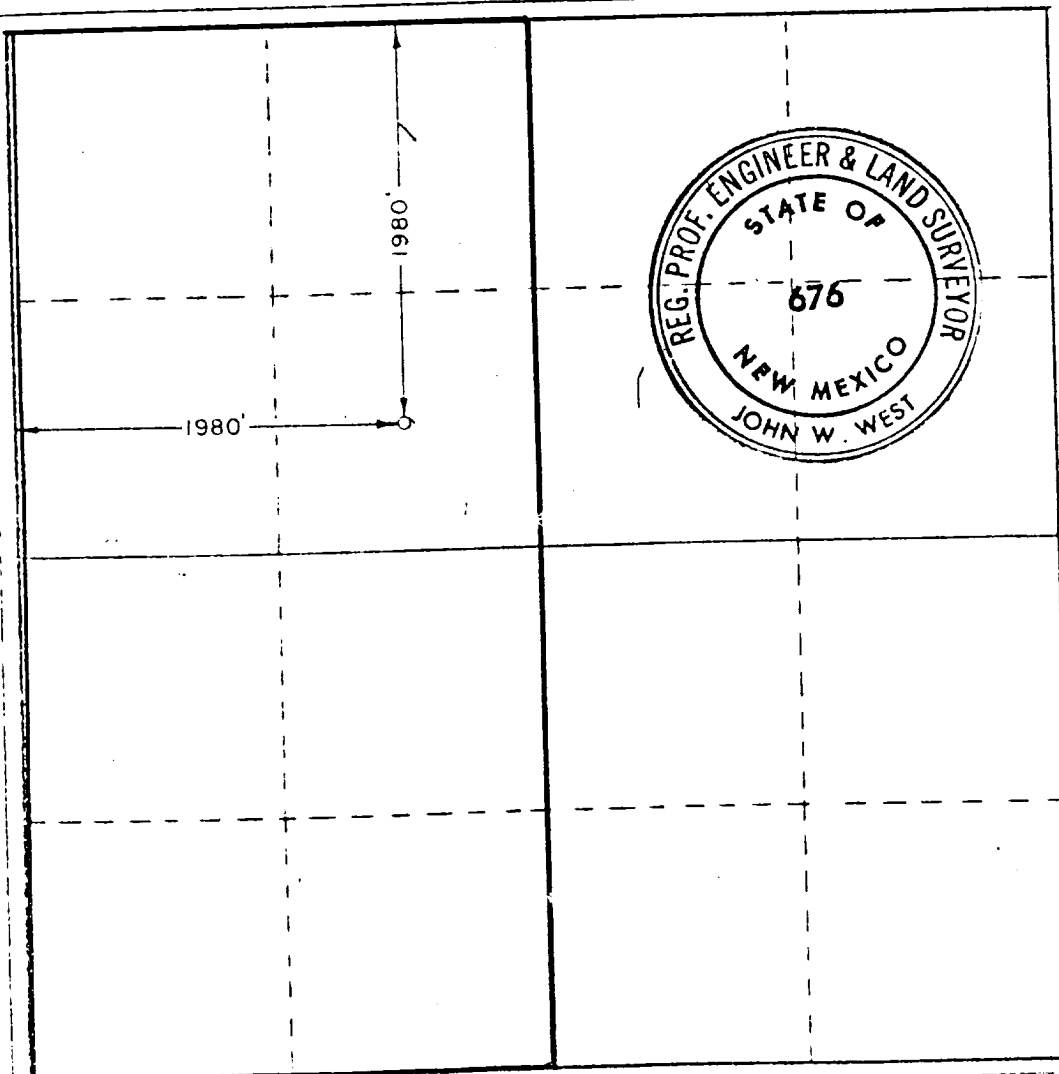
Company Texas Oil and Gas Corporation			Lease Yates Federal "A"		Well 1
Tract Letter F	Section 21	Township 20 South	Range 29 East	County Eddy	
Actual Well Location of well:					
1980 feet from the North line and		1980 feet from the West line			
Ground Level Elev. 3271.3	Producing Formation Burton Flat Bone Spring		Pool Morrow Und Bone Spring	Indicated Acreage 320 40	

1. Outline the acreage dedicated to the subject well by colored pencil or hatchure marks on the plat below
2. If more than one lease is dedicated to the well, outline each and identify the ownership thereof (both as to working interest and royalty).
3. If more than one lease of different ownership is dedicated to the well, have the interests of all owners been consolidated by communitization, unitization, force-pooling, etc?

☐ Yes ☐ No If answer is "yes," type of consolidation _____

If answer is "no," list the owners and tract descriptions which have actually been consolidated (Use reverse side of this form if necessary.) _____

No allowable will be assigned to the well until all interests have been consolidated (by communitization, unitization, forced-pooling, or otherwise) or until a non-standard unit, eliminating such interests, has been approved by the Commission.



CERTIFICATION

I hereby certify that the information contained herein is true and complete to the best of my knowledge and belief

J. R. Colter
J. R. Colter

Position
Staff Engineer

Company
Texas Oil & Gas Corp.

Date
October 1, 1974

I hereby certify that the location shown on this plat was plotted from field notes of actual surveys made by me or under my supervision and that the same is true and correct to the best of my knowledge and belief.

RECEIVED
OCT-2-1974
U.S. GEOLOGICAL SURVEY
ARTESIA, NEW MEXICO

Date of Survey
September 28, 1974

Registration of Survey
in the Public Survey

John W. West