

NEW MEXICO OIL CONSERVATION COMMISSION
WELL LOCATION AND ACREAGE DEDICATION PLAT

Copy 6.5
71431
Form C-102, 1st Edition
Supersedes C-128
Effective 1-1-65

All distances must be from the outer boundaries of the Section.

Operator Atlantic Richfield Company			Lease BQ-2 Federal Com		Well No. 1
Unit Letter 0	Section 9	Township 21S	Range 26E	County Eddy	
Actual Footage Location of Well: 660 feet from the South line and 1980 feet from the East line					
Ground Level Elev. 3280.6'	Producing Formation Atoka Gas		Pool Avalon	Dedicated Acreage: 5 1/2 320 Acres	

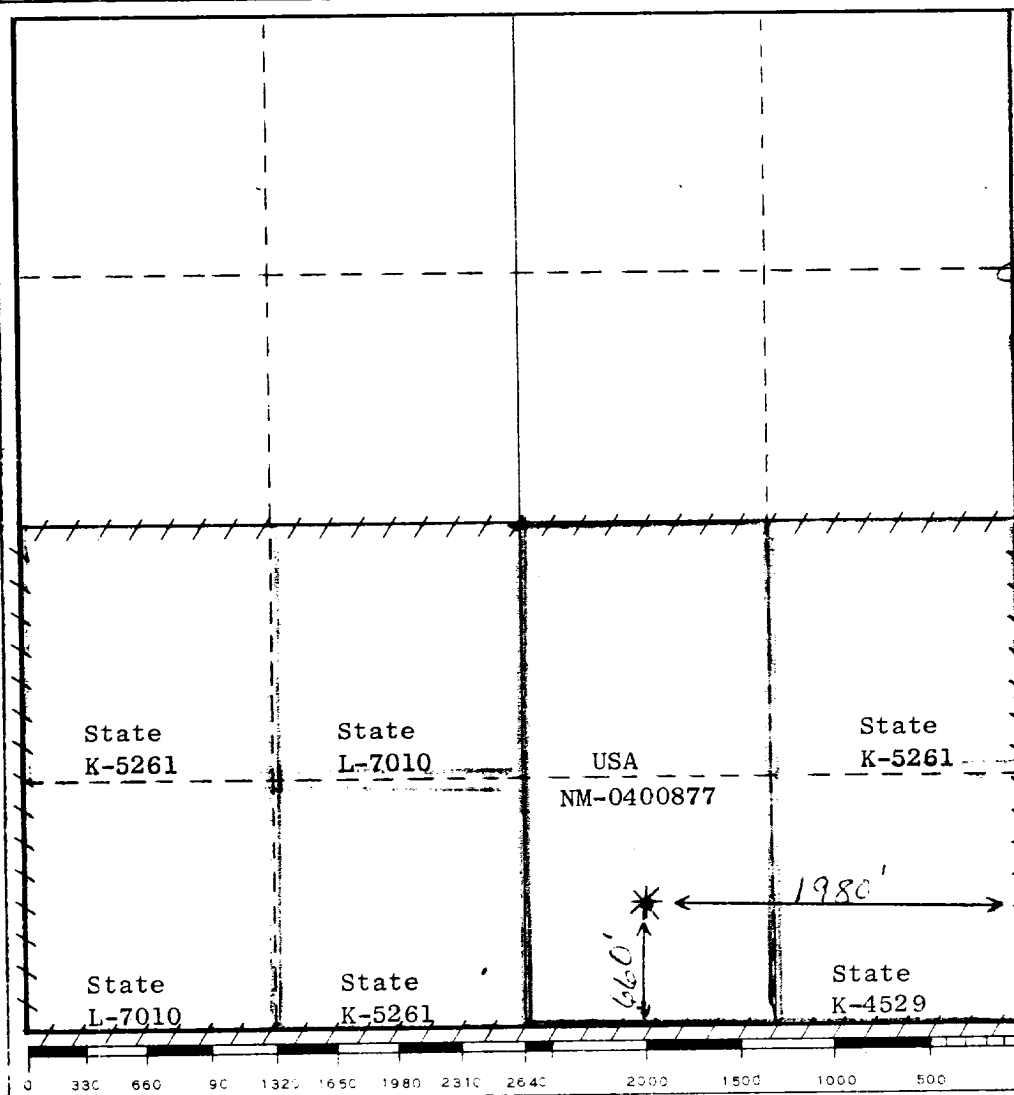
- Outline the acreage dedicated to the subject well by colored pencil or hatchure marks on the plat below.
- If more than one lease is dedicated to the well, outline each and identify the ownership thereof (both as to working interest and royalty).
- If more than one lease of different ownership is dedicated to the well, have the interests of all owners been consolidated by communitization, unitization, force-pooling, etc?

RECEIVED
JUN 9 1975

☒ Yes ☐ No If answer is "yes," type of consolidation Communitization **O. C. C. ARTESIA, OFFICE**

If answer is "no," list the owners and tract descriptions which have actually been consolidated. (Use reverse side of this form if necessary.) _____

No allowable will be assigned to the well until all interests have been consolidated (by communitization, unitization, forced-pooling, or otherwise) or until a non-standard unit, eliminating such interests, has been approved by the Commission.



CERTIFICATION	
I hereby certify that the information contained herein is true and complete to the best of my knowledge and belief.	
Name	<i>[Signature]</i>
Position	Dist. Drlg. Supv.
Company	Atlantic Richfield Company
Date	6/5/75
I hereby certify that the well location shown on this plat was plotted from field notes of actual surveys made by me or under my supervision, and that the same is true and correct to the best of my knowledge and belief.	
Date Surveyed	
Registered Professional Engineer and/or Land Surveyor	
Certificate No.	