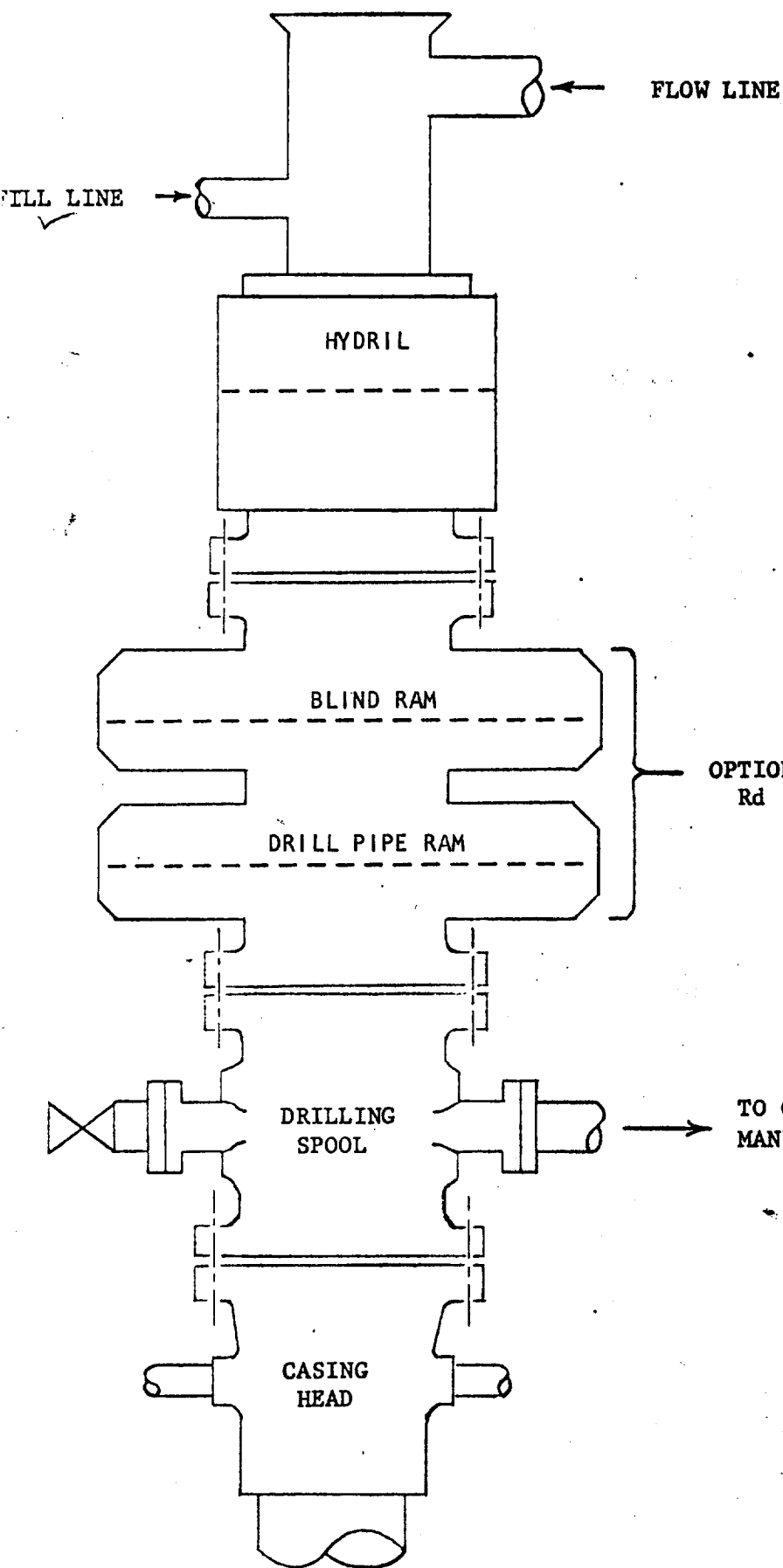


BLOWOUT PREVENTER REQUIREMENTS

API _____ M- _____ -SRRA
✓ SRdA

#1 GOVT AC
660 FSL, & 1980' FWL
SEC 15-T20S-R28E.
EDDY COUNTY, NEW MEXICO



CLOSING METHOD

Sufficient accumulator volume shall be available to operate both the bag type preventer and pipe ram preventer with a snap-action through the following steps: close-open-close.

RECEIVED

NOV 27 1974

U. S. GEOLOGICAL SURVEY
ARTESIA, NEW MEXICO