

UNITED STATES
DEPARTMENT OF THE INTERIOR
GEOLOGICAL SURVEY

APPLICATION FOR PERMIT TO DRILL, DEEPEN, OR PLUG BACK

1a. TYPE OF WORK

DRILL ☒DEEPEN ☐PLUG BACK ☐

b. TYPE OF WELL

OIL
WELL ☐GAS
WELL ☒

OTHER

SINGLE
ZONE ☒MULTIPLE
ZONE ☐

2. NAME OF OPERATOR

Mobil Oil Corporation ✓

3. ADDRESS OF OPERATOR

Box 633, Midland, Texas 79701

4. LOCATION OF WELL (Report location clearly and in accordance with any State requirements.* 1974

At surface

600' FNL & 1980' FWL, Sec. 18

At proposed prod. zone

Same as surface

14. DISTANCE IN MILES AND DIRECTION FROM NEAREST TOWN OR POST OFFICE*

10. DISTANCE FROM PROPOSED*

LOCATION TO NEAREST
PROPERTY OR LEASE LINE, FT.
(Also to nearest drig. unit line, if any)

16. NO. OF ACRES IN LEASE

314.12

17. NO. OF ACRES ASSIGNED
TO THIS WELL

314.12

18. DISTANCE FROM PROPOSED LOCATION*
TO NEAREST WELL, DRILLING, COMPLETED,
OR APPLIED FOR, ON THIS LEASE, FT.

19. PROPOSED DEPTH

11,500'

20. ROTARY OR CABLE TOOLS

Rotary

21. ELEVATIONS (Show whether DF, RT, GR, etc.)

3208' - Ground

22. APPROX. DATE WORK WILL START*

December 10, 1974

23.

PROPOSED CASING AND CEMENTING PROGRAM

| SIZE OF HOLE | SIZE OF CASING | WEIGHT PER FOOT | SETTING DEPTH | QUANTITY OF CEMENT |
|--------------|----------------|-----------------|---------------|--------------------------|
| 17½" | 13-3/8" | 48# H-40 | 0-600' | (1) Circulate to surface |
| 12½" | 8-5/8" | 32# J-55 | 0-2600' | (2) Circulate to surface |
| 7-7/8" | 5½" | 17# N-80 | 0-1300' | (3) Circulate to surface |
| | | 17# K-55 | 1300'-2500' | |
| | | 15.5# K-55 | 2500'-6250' | |
| | | 17# K-55 | 6250'-8350' | |
| | | 17# N-80 | 8350'-11,500' | |

(1) - Class H cement with 2% CaCl₂.

(2) - Light weight slurry and tail in with Class H neat.

(3) - TLW mixed @ 12.1#/gallon and tail in with Class H neat
with retarder.

Mud program attached.

Diagrammatic sketch of blowout preventers attached.

IN ABOVE SPACE DESCRIBE PROPOSED PROGRAM: If proposal is to deepen or plug back, give data on present productive zone and proposed new productive zone. If proposal is to drill or deepen directionally, give pertinent data on subsurface locations and measured and true vertical depths. Give blowout preventer program, if any.

24.

SIGNED A. D. Bond

TITLE Proration Staff Assistant

DATE 11/13/74

(This space for Federal or State office use)

PERMIT NO.

APPROVAL DATE

DEC 2 1974

APPROVED BY

TITLE

DATE

CONDITIONS OF APPROVAL, IF ANY:

DISTRICT ENGINEER

SUBJECT TO ATTACHED DEEP WELL CONTROL

REQUIREMENTS DATED

BY USES IN SUFFICIENT TIME TO

*See Instructions On Reverse Side

CEMENTING THE 17½" CASING.

RECEIVED
NOV 14 1974
U. S. GEOLOGICAL SURVEY
ARTESIA, NEW MEXICOTHIS APPROVAL IS RESCINDED IF OPERATIONS
ARE NOT COMMENCED WITHIN 3 MONTHS.

NEW MEXICO OIL CONSERVATION COMMISSION
WELL LOCATION AND ACREAGE DEDICATION PLAT

Form C-102
Supersedes C-128
Effective 1-1-65

All distances must be from the outer boundaries of the Section.

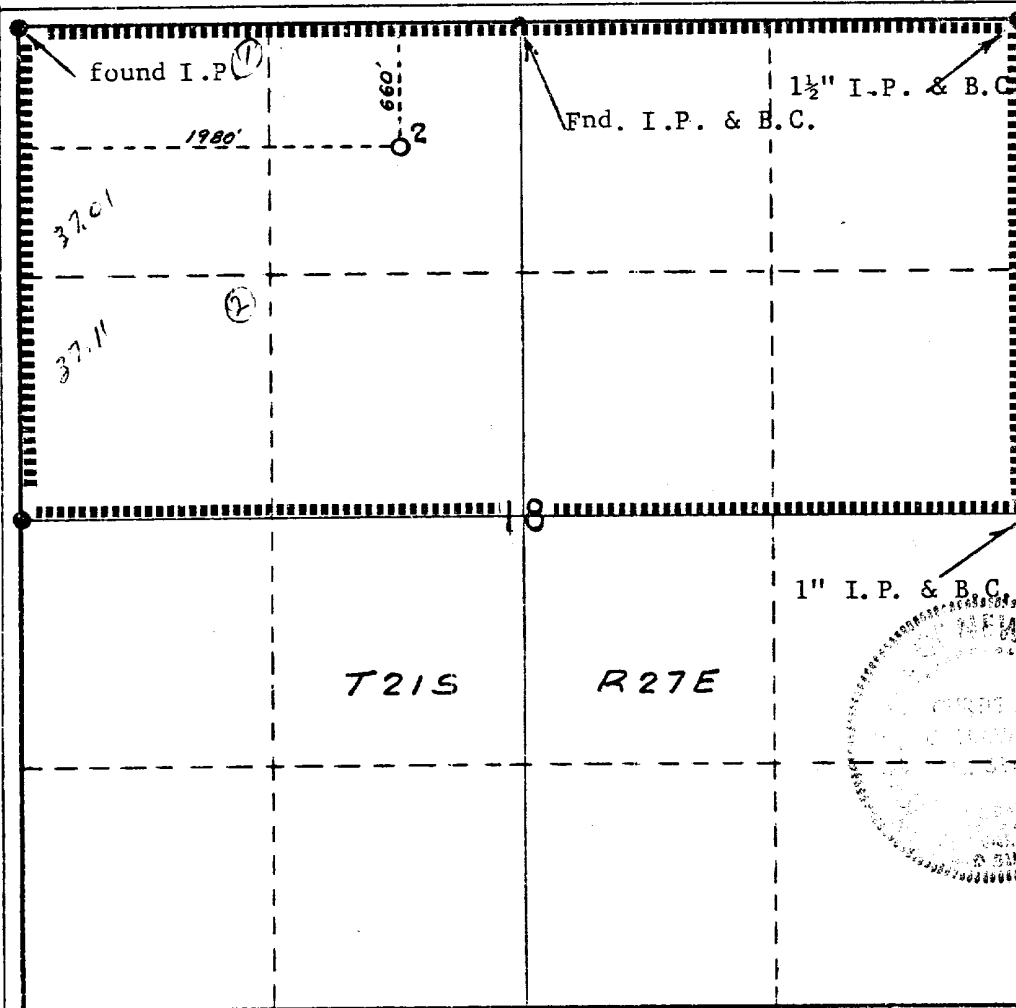
| | | | | | |
|---|--------------------------------------|-----------------------------|----------------------------|---|----------------------|
| Operator Mobil Oil Corporation | | | Lease Federal 00 | | Well No. 2 |
| Unit Letter C | Section 18 | Township 21S | Range 27E | County Eddy | |
| Actual Footage Location of Well: 660 feet from the North line and 1980 feet from the West line | | | | | |
| Ground Level Elev. 3208 | Producing Formation Morrow | Pool Undesignated | | Dedicated Acreage: 314.12 Acres | |

1. Outline the acreage dedicated to the subject well by colored pencil or hatchure marks on the plat below.
2. If more than one lease is dedicated to the well, outline each and identify the ownership thereof (both as to working interest and royalty).
3. If more than one lease of different ownership is dedicated to the well, have the interests of all owners been consolidated by communitization, unitization, force-pooling, etc?

☐ Yes ☐ No If answer is "yes," type of consolidation _____

If answer is "no," list the owners and tract descriptions which have actually been consolidated. (Use reverse side of this form if necessary.) _____

No allowable will be assigned to the well until all interests have been consolidated (by communitization, unitization, forced-pooling, or otherwise) or until a non-standard unit, eliminating such interests, has been approved by the Commission.
S. 87° 58' W - 2655.7



CERTIFICATION

I hereby certify that the information contained herein is true and complete to the best of my knowledge and belief.

A. D. Bond

Name
A. D. Bond
Position
Proration Staff Assistant
Company
Mobil Oil Corporation
Date
11-13-74

RECEIVED
NOV 24 1974

I hereby certify that the well location shown on this plat was plotted in the field notes of actual surveys made by me or under my supervision, and that the same is true and correct to the best of my knowledge and belief.

Curtis A. Callaway

Date Surveyed
November 7, 1974
Registered Professional Engineer and/or Land Surveyor
Curtis A. Callaway
Certificate No.
3342

MOBIL OIL CORPORATION
P. O. Box 633
Midland, Texas 79701

TWELVE-POINT SURFACE USE PLAN FOR
DRILLING OPERATIONS ON FEDERAL LEASES

Lease Name: Federal 00 Well No. 2
Well Location: 660' FNL & 1980' FWL, Sec. 18, T21S, R27E
Field: Undesignated (Morrow)
County: Eddy State: New Mexico

1. * Existing roads including location of the exit from the main highway.
2. * Planned access roads.
3. * Location of wells.
4. * Lateral roads to well location.
5. * Location of tank batteries and flow lines. Tank battery will be located on the pad if possible.
6. Location and types of water supply: Water will be hauled to the drill site.

7. Methods for handling waste disposal: Waste will be burned, buried or hauled from the location.

8. Location of camps: None

9. Location of air strips: None

10. Location layout to include position or rig, mud tanks, reserve pits, burn pits, pipe racks, etc.: See location plan.

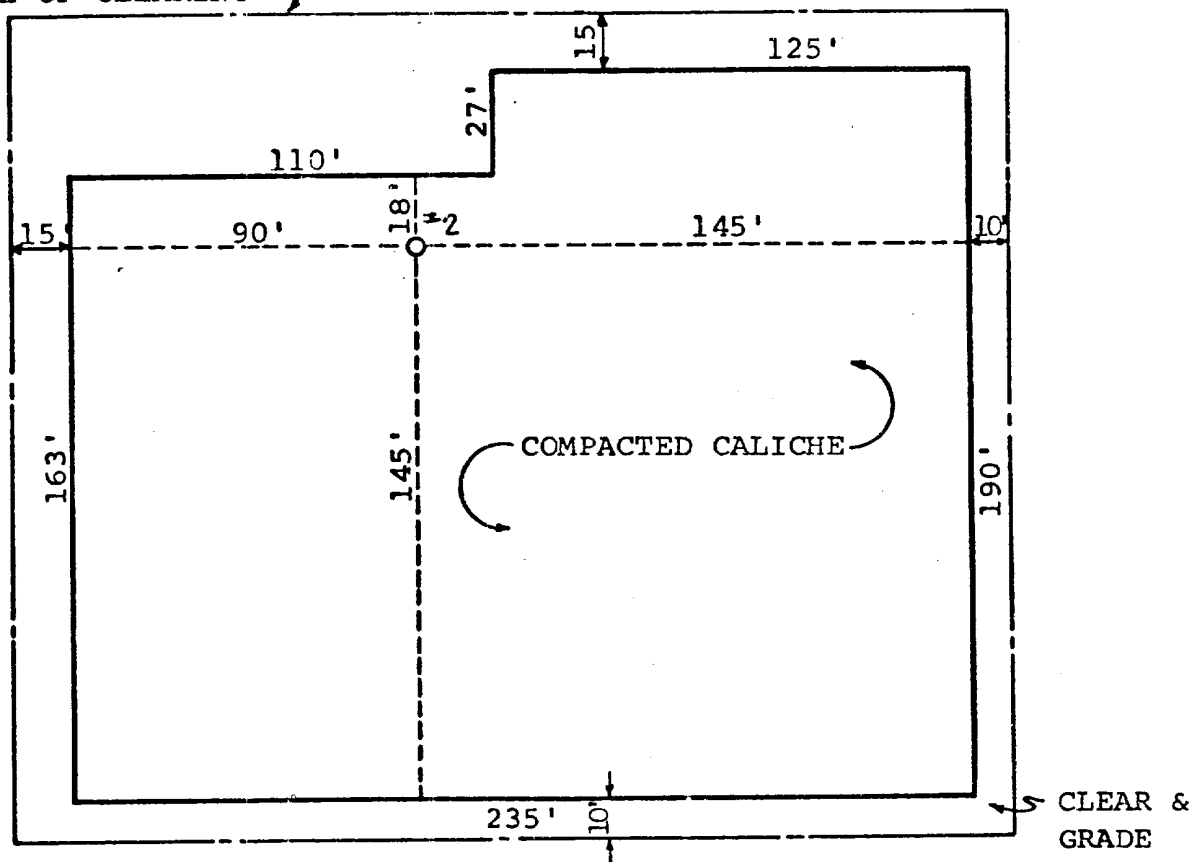
11. Plans for restoration of the surface: Pits will be backfilled and leveled to original topography. Area will be restored to original grade and left for return of natural vegetation. Pad will be left in place for well servicing.

12. Any other information that may be used in evaluating the impact on environment: Semi-arid region with rolling hills. Sparse grass pasture with sparse sage brush. Soil is sandy and rocky.

* Shown on attached map.

IT IS EXPRESSLY FURTHERED, THE DRAWING AND ANY COPIES THEREOF (PARTIAL OR COMPLETE) SHALL BE RETURNED TO THE OWNER ON DEMAND.

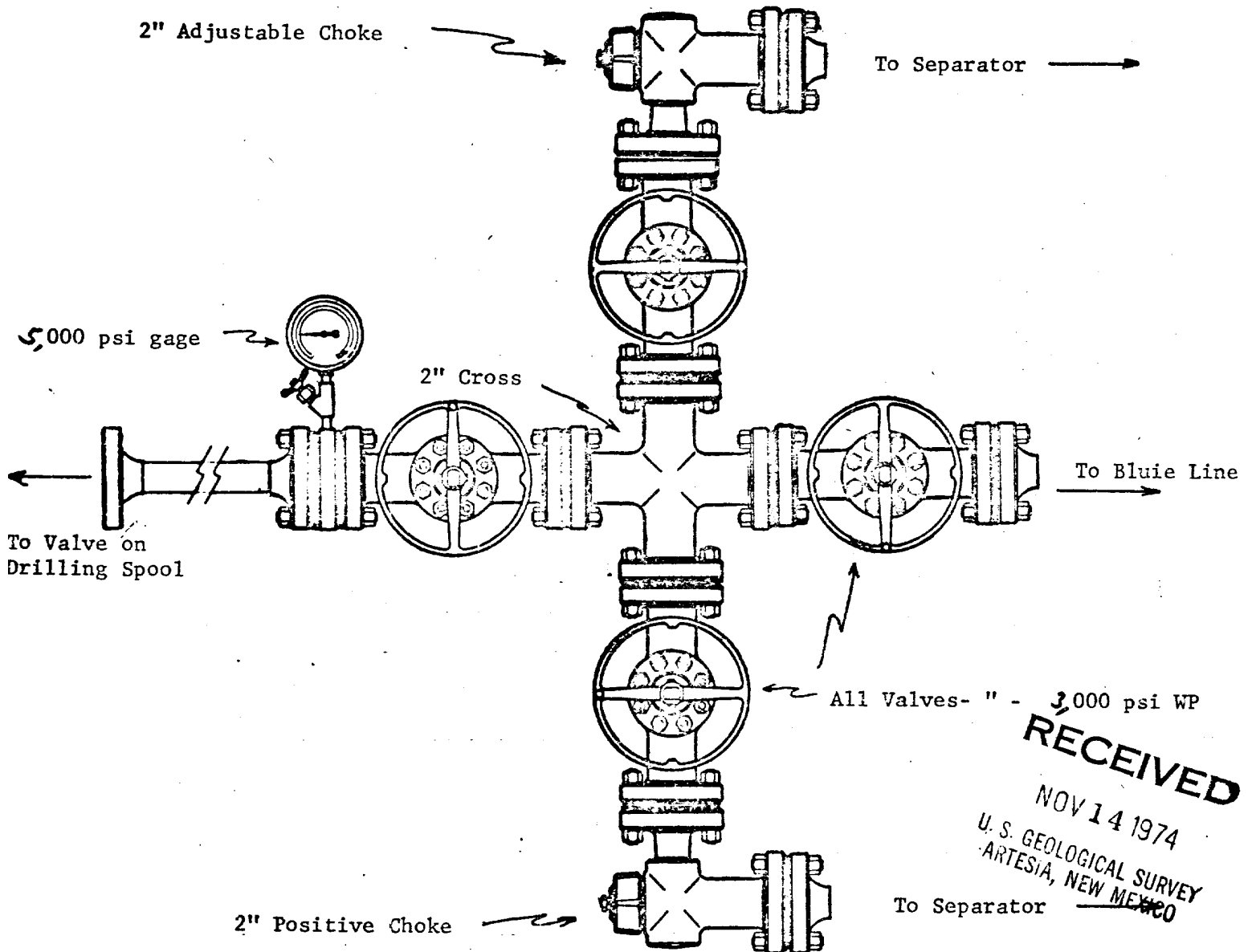
CO7227(11-61)



MOBIL OIL CORPORATION'S
FEDERAL OO, WELL #2
UNIT C, SEC. 18, T21S, R27E
EDDY COUNTY, NEW MEXICO

| | | | | | |
|--|--|------|--|----|------------|
| | | | | | |
| NO. | | DATE | | BY | ALTERATION |
| STANDARD LOCATION PLAN 10,000'-15,000' DEEP WELLS ON STABLE SOIL | | | | | |
| MOBIL OIL CORPORATION | | | | | |
| DRAWN DLT | | | | | DWG. NO. |

PROPOSED CHOKE MANIFOLD
(MINIMUM REQUIREMENTS)
8-5/8 " CASING STRING

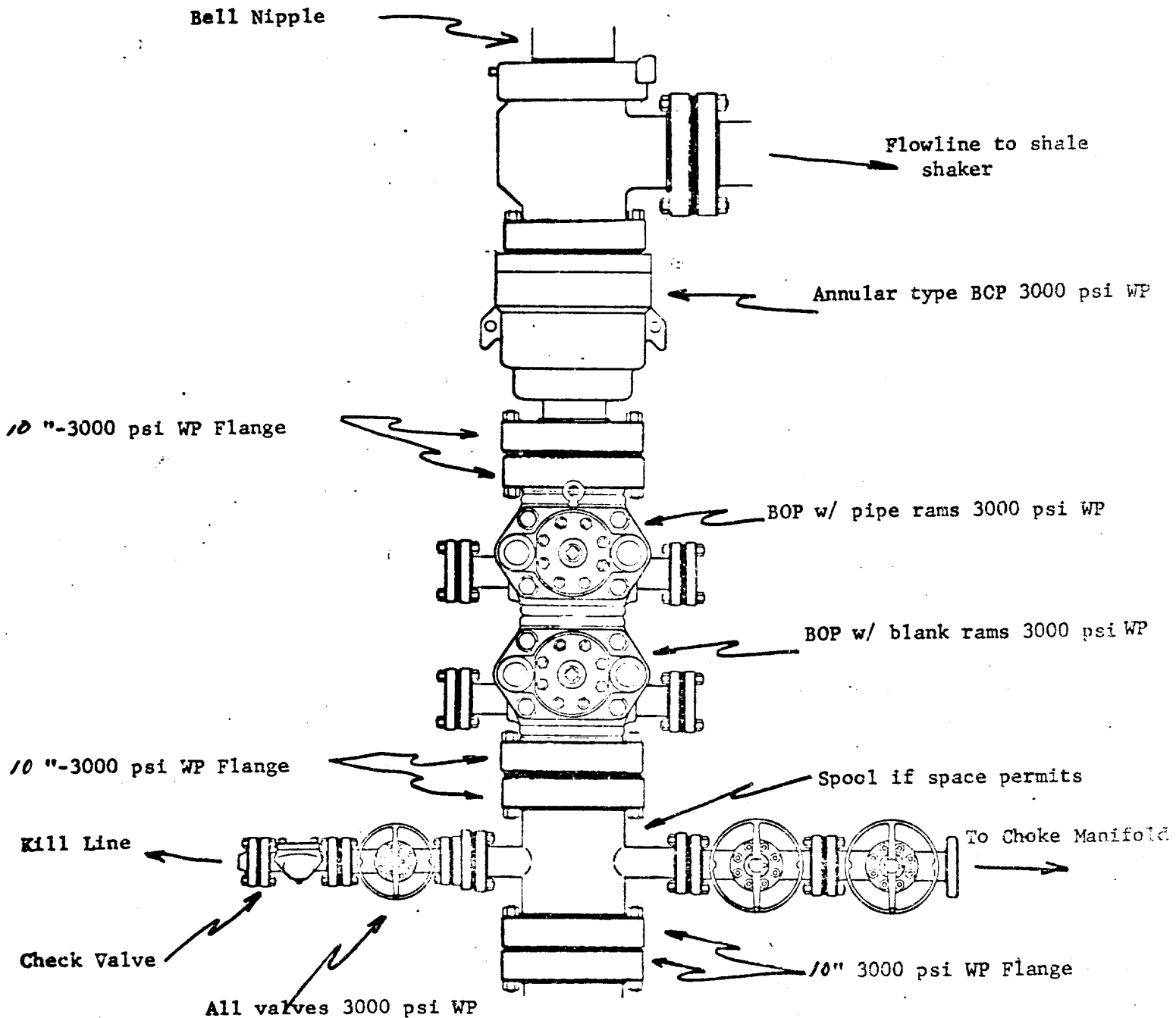


RECEIVED

NOV 14 1974
U. S. GEOLOGICAL SURVEY
ARTESIA, NEW MEXICO

MOBIL OIL CORP.
WELL NAME & NO. Federal 00, #2
Eddy COUNTY, New Mexico

PROPOSED BOP STACK
8 5/8 " CASING



MOBIL OIL CORP.

WELL NAME & NO. Federal 00, #2

Eddy COUNTY, New Mexico

MUD PROGRAM

MOBIL OIL CORPORATION'S
FEDERAL OO, WELL #2
UNDESIGNATED (MORROW) POOL
EDDY COUNTY, NEW MEXICO

| | <u>Type Mud</u> | <u>Weight</u> | <u>Viscosity</u> | <u>PH</u> | <u>Water Loss</u> |
|------------|-------------------------|---------------|------------------|-----------|-------------------|
| 0-600' | Spud Mud | No control | | | |
| 600-2600' | Fresh water | | | | |
| 2600-8500' | Fresh water | | | | |
| 8500-TD | Brine water- polymer | 9.0-10.3 | 30-38 | 9+ | 15 cc |

R-27-E

