

NEW MEXICO OIL CONSERVATION COMMISSION
WELL LOCATION AND ACREAGE DEDICATION FORM

Form C-126
Supersedes C-126
Effective 10-65

All distances must be from the outer boundaries of the Section

Operator TEXAS OIL & GAS CORPORATION			Lessee WILLIAMSON FEDERAL		Well No. 4
Section F	Section 15	Township 20 SOUTH	Range 29 EAST	County EDDY	
Actual Section Location of Well					
1980 feet from the WEST		1980 feet from the NORTH			
3295.4		Morrow Strawn		40	
		Barlow Plat			

- Outline the acreage dedicated to the subject well by colored pencil or hatchure marks on the plat below.
- If more than one lease is dedicated to the well, outline each and identify the ownership thereof (both as to working interest and royalty).
- If more than one lease of different ownership is dedicated to the well, have the interests of all owners been consolidated by communitization, unitization, force-pooling, etc?

RECEIVED

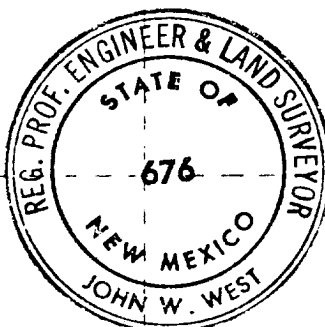
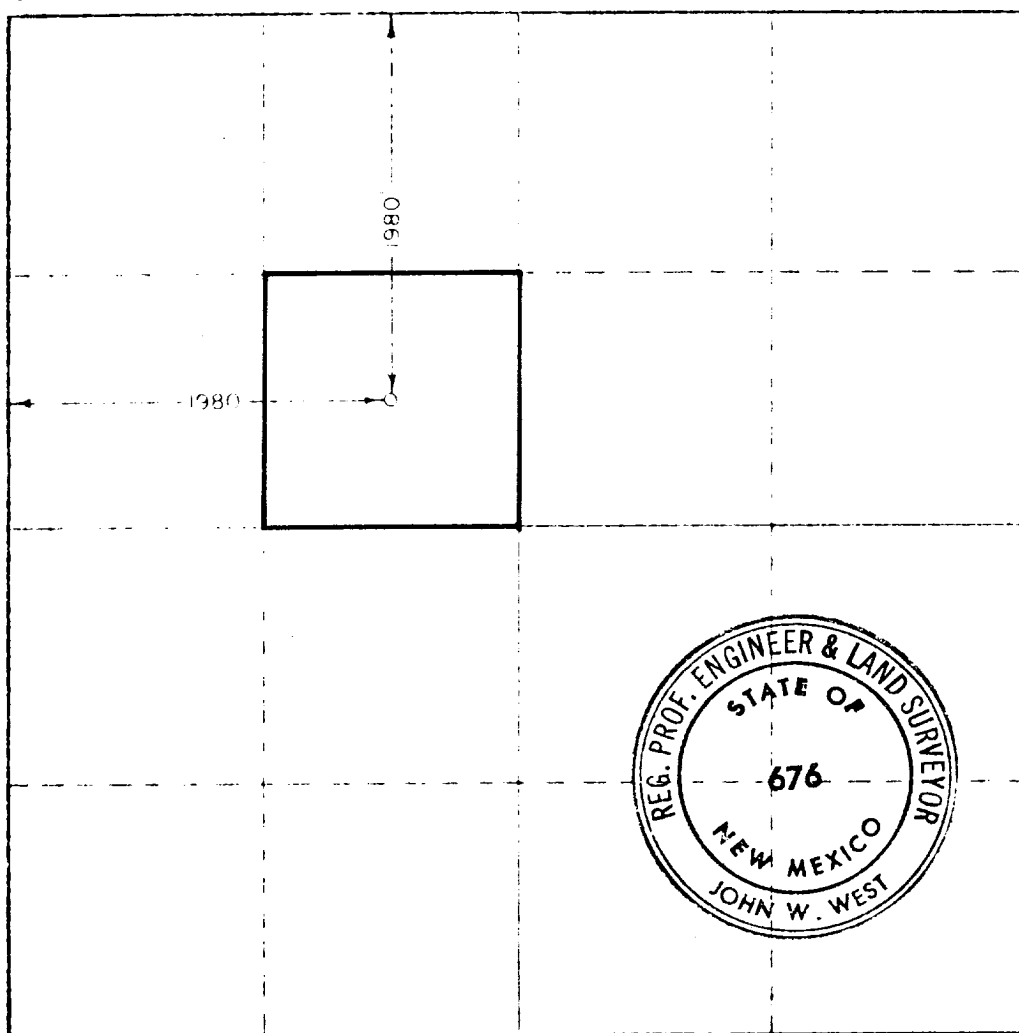
☐ Yes ☐ No If answer is "yes," type of consolidation _____

MAY 2 1975

If answer is "no" list the owners and tract descriptions which have actually been consolidated (Use reverse side of this form if necessary) _____

O. G. B.

No allowable will be assigned to the well until all interests have been consolidated by communitization, unitization, forced-pooling, or otherwise) or until a non-standard unit, eliminating such interests, has been approved by the Commission.



CERTIFICATION

I hereby certify that the information contained herein is true and complete to the best of my knowledge and belief.

J. R. Colter

J. R. Colter

Staff Engineer

Texas Oil & Gas Corp.

April 29, 1975

RECEIVED

The location shown on this plat was plotted from field notes of actual surveys made by me or under my supervision and that the same are correct to the best of my knowledge and belief.

U. S. GEOLOGICAL SURVEY
ARTESIA, NEW MEXICO

NOVEMBER 15, 1974

Registered Professional Engineer and Land Surveyor

John W. West

676

0 330 660 990 1320 1650 1980 2310 2640 2970 3300 3630 3960 4290 4620 4950 5280 5610 5940 6270 6600 6930 7260 7590 7920 8250 8580 8910 9240 9570 9900