

NO. OF COPIES RECEIVED	6
DISTRIBUTION	
SANITY FEE	1
FILL	1
U.S.G.S.	2
LAND OFFICE	
OPERATOR	1

NEW MEXICO OIL CONSERVATION COMMISSION

30-015-21455
Form C-101
Revised 1-1-65

RECEIVED
JAN 7 1975

5A. Indicate Type of Lease
STATE FEE
5. State Oil & Gas Lease No.
E 5232

APPLICATION FOR PERMIT TO DRILL, DEEPEN, OR PLUG BACK

1a. Type of Well
b. Type of Well DRILL DEEPEN PLUG BACK
OIL WELL GAS WELL OTHER SINGLE ZONE MULTIPLE ZONE
2. Name of Operator
PERRY R. BASS
3. Address of Operator
P. O. Box 1178; Monahans, Texas 79736
4. Location of Well
GRID LETTER C LOCATED 660 FEET FROM THE north LINE
AND 1980 FEET FROM THE west LINE OF SEC. 32 T. 21-S R. 29-E SMDW
7. Unit Agreement Name
Big Eddy Unit
8. Farm or Lease Name
Big Eddy Unit
9. Well No.
42
10. Field and Pool, or Wildcat
Wildcat
12. County
Eddy
13. Proposed Depth
13,500'
14. Formation
Morrow
15. History of Well
Rotary
21. Estimated Cost (Cost whether Dr., RR, etc.)
3314.0 GL, Surveyed
21A. Kind of Status Plug, Bond
Blanket
21B. Drilling Contractor
McVay Drilling Co.
22. Approx. Date Well will start
Rig availability.

PROPOSED CASING AND CEMENT PROGRAM

SIZE OF HOLE	SIZE OF CASING	WEIGHT PER FOOT	SETTING DEPTH	SACKS OF CEMENT	EST. TOP
20"++	20" OD	94#/ft.	35'	Redi-mix	Base cellar
15"	13 3/8"	48#/ft.	500'	200 sx.; suffic. to surface.	
12 1/4"	8 5/8"	32#/ft.	3300'	800 sx.; suffic. to surface.	
7 5/8"	5 1/2"	17#/ft. - 20#/ft.	TD, approx. 13,500'	650 sx.; suffic. to reach to 9000'.	

for BOP see attachment

APPROVAL VALID FOR 90 DAYS UNLESS DRILLING COMMENCED,

EXPIRES 4-7-75

IN ABOVE SPACE DESCRIBE PROPOSED PROGRAM; IF PROPOSAL IS TO DEEPEN OR PLUG BACK, GIVE DATA ON PRESENT PRODUCTIVE ZONE AND PROPOSED NEW PRODUCTIVE ZONE. GIVE BLOWOUT PREVENTER PROGRAM, IF ANY.

I hereby certify that the information above is true and complete to the best of my knowledge and belief.

Signed C. Alton Roberts Title Engineer Date January 6, 1975

(This space for State Use)

APPROVED BY W.A. Gussert TITLE SUPERVISOR, DISTRICT II DATE JAN 7 1975

CONDITIONS OF APPROVAL, IF ANY:

NEW MEXICO OIL CONSERVATION COMMISSION
WELL LOCATION AND ACREAGE DEDICATION PLAT

Form C-102
Supersedes C-128
Effective 1-1-65

All distances must be from the outer boundaries of the Section

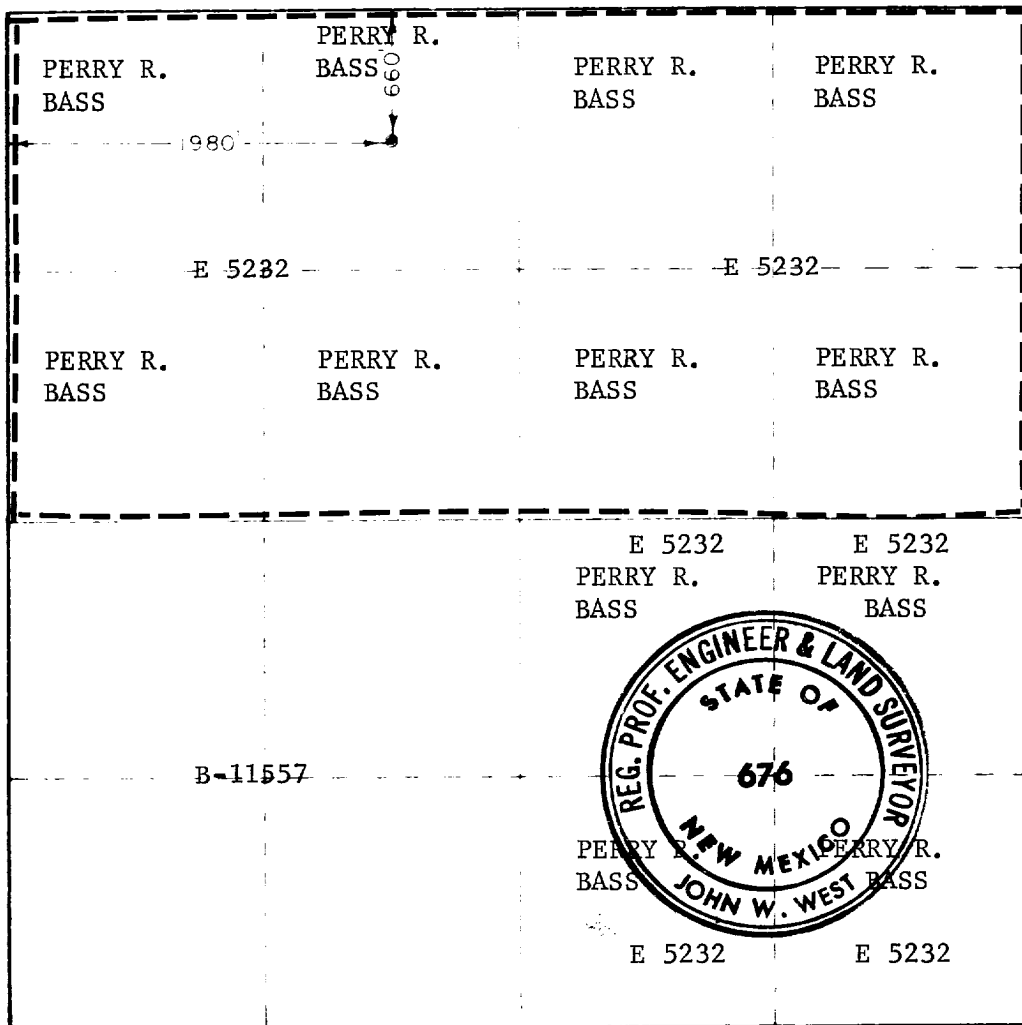
Perry R. Bass		Big Eddy Unit		Well No. 42
C	32	21 South	29 East	Eddy
660	North	1980	West	
3314.0	Morrow		320	Acres

- Outline the acreage dedicated to the subject well by colored pencil or hachure marks on the plat below.
- If more than one lease is dedicated to the well, outline each and identify the ownership thereof (both as to working interest and royalty)
- If more than one lease of different ownership is dedicated to the well, have the interests of all owners been consolidated by communitization, unitization, force-pooling, etc?

Yes No If answer is "yes" type of consolidation _____

If answer is "no" list the owners and tract descriptions which have actually been consolidated. (Use reverse side of this form if necessary) _____

No allowable will be assigned to the well until all interests have been consolidated (by communitization, unitization, force-pooling, or otherwise) or until a non-standard unit, eliminating such interests, has been approved by the Commission.



CERTIFICATION

I hereby certify that the information contained herein is true and complete to the best of my knowledge and belief.

C. A. Roberts

Name
C. A. Roberts

Profession
Engineer

For: my
Perry R. Bass

Date
January 6, 1975

I hereby certify that the well location shown on this plat was plotted from field notes of actual surveys made by me or under my supervision and that the same is true and correct to the best of my knowledge and belief.

Date Surveyed
December 31, 1974

Registered Professional Engineer and or Land Surveyor

John W. West

Certificate No. 676

ATTACHMENTS:

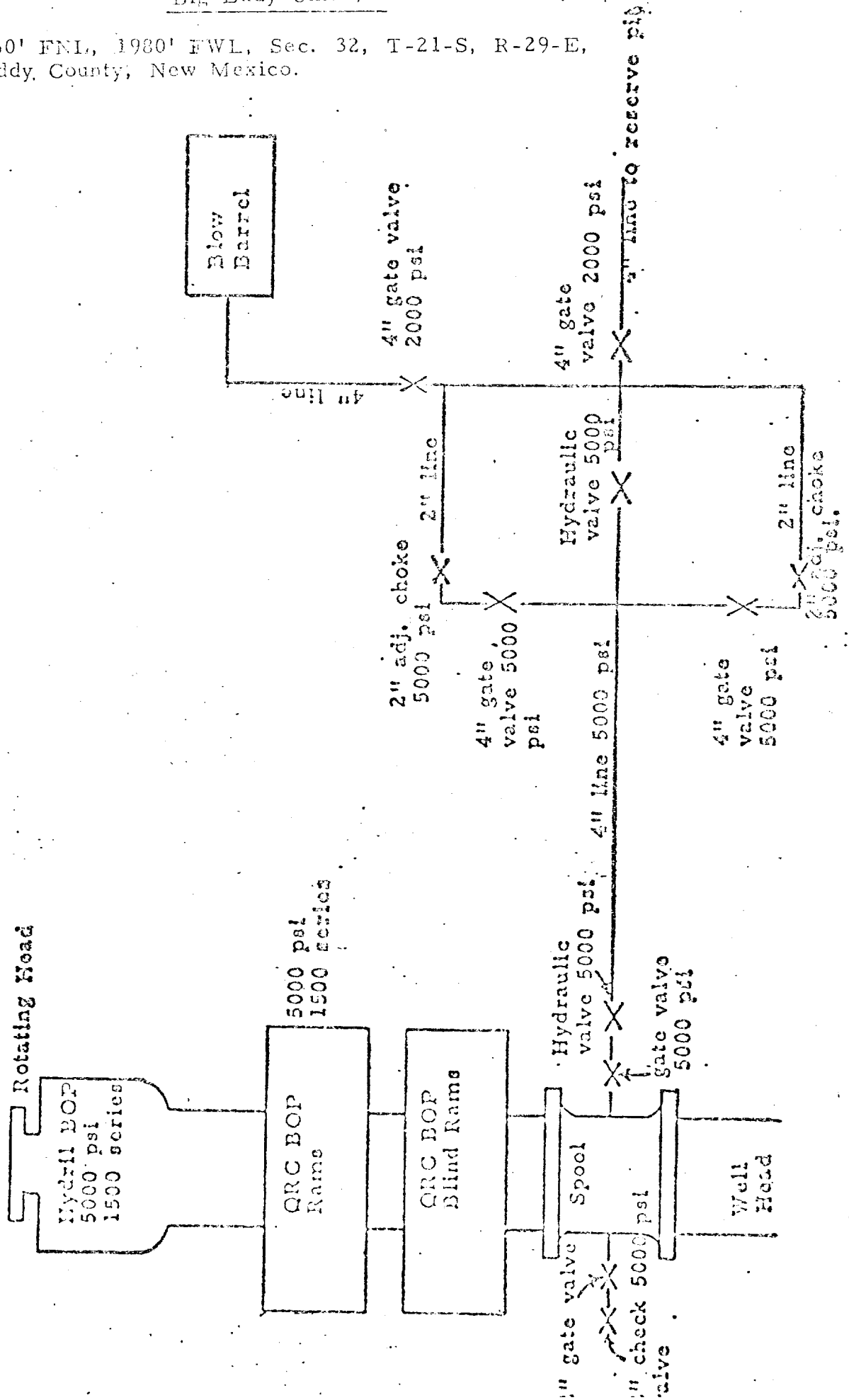
1. Form C-101, application to drill.
2. Location plat.
3. Plat of location layout.
4. Small scale map of existing roads with proposed access road; approximately 1 2/3 miles of additional access road, with occasional turn-outs, will be needed.
5. Schematic diagram of BOP equipment, manifold, kill-lines, etc.

In addition, please be advised:

1. Mud pits will be of steel.
2. No camp site or air strip is proposed.
3. Tank battery will be located near or adjacent to a corner of the location pad.
4. Water supply will be trucked to the well, secured from a rancher in the immediate area, or a water well will be drilled near the southwest corner of the location pad.
5. The land surface will be restored to as near original conditions as possible, and to the satisfaction of the U. S. G. S. after drilling and completion operations have ceased.
6. All detrimental waste will be disposed of in accordance with good disposal practices. A Burn Pit will be provided to burn paper and bury solid waste; see plat.
7. Well control equipment with 5000 psi choke manifold. The drill pipe BOP's and Hydril BOP's are to be opened and closed daily. The blank BOP's are to be opened and closed each trip.
8. PVT equipment, flow line sensor, and pump stroke counter are to be utilized while drilling the proposed well.

PERRY R. BASS
 Big Eddy Unit #42

Loc: 660' FNL, 1980' FWL, Sec. 32, T-21-S, R-29-E,
 Eddy County, New Mexico.



PERRY R. BASS
BIG EDDY UNIT #42

ESTIMATED FORMATION MARKERS:

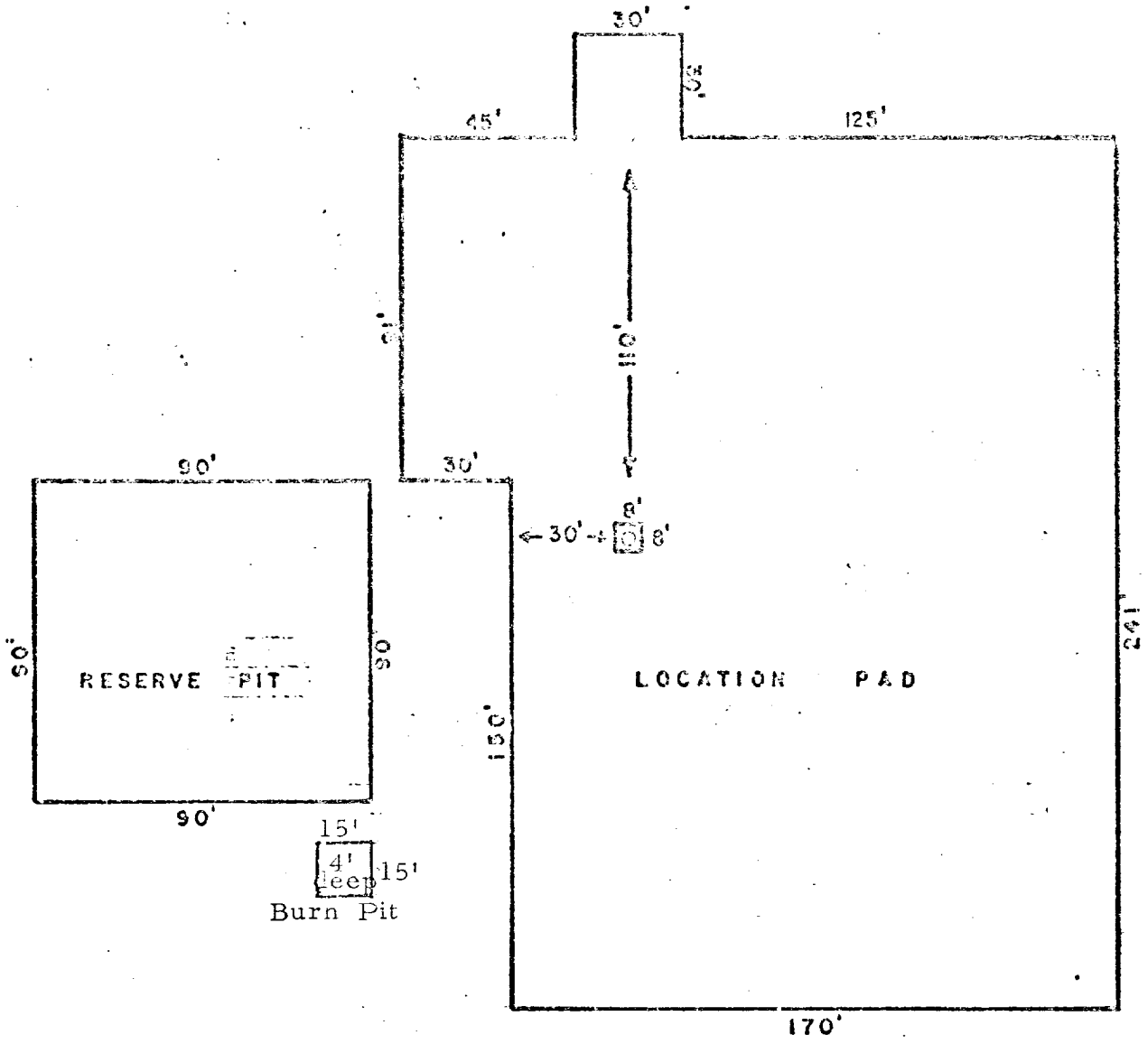
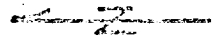
Ground level elevation, surveyed: 3314'.
Est. KDB elevation: 3331'.

T/Rustler:	184 (+3147)
T/Salt:	434 (+2897)
B/Salt:	2704 (+ 627)
T/Delaware Lime:	3010 (+ 321)
T/Delaware Sand:	3080 (+ 251)
T/Bone Spring:	6681 (-3350)
T/Wolfcamp:	9851 (-6520)
T/Strawn:	11231 (-7900)
T/Atoka:	11484 (-8153)
T/Morrow:	12084 (-8753)
T/Morrow Sand:	12414 (-9083)
Base Sand:	12984 (-9653)

LOCATION FOR SANDY GROUND

PERRY R. BASS, Big Eddy Unit #42

Location: 660' from north line, 1980' from west line, Section 32, T-21-S, Range 29-E, Eddy County, New Mexico.



BASS ENTERPRISES PRODUCTION CO.

P. O. BOX 1178
MONAHANS, TEXAS 79756

January 6, 1975
File: CAR-1-401

OIL AND GAS CONSERVATION COMMISSION
P. O. Drawer DD
Artesia, New Mexico 88210

Gentlemen:

Subject: PERRY R. BASS, Big Eddy Unit #42

Application to drill the subject well, with all pertinent data, is attached. Location is: 660' from north line, 1980' from west line; of Section 32, T-21-S, R-29-E; Eddy County, New Mexico.

If additional information is required please contact the undersigned.

Yours very truly,



C. A. Roberts
Engineer

blh
Attach.