

T. 20 S

T. 21 S

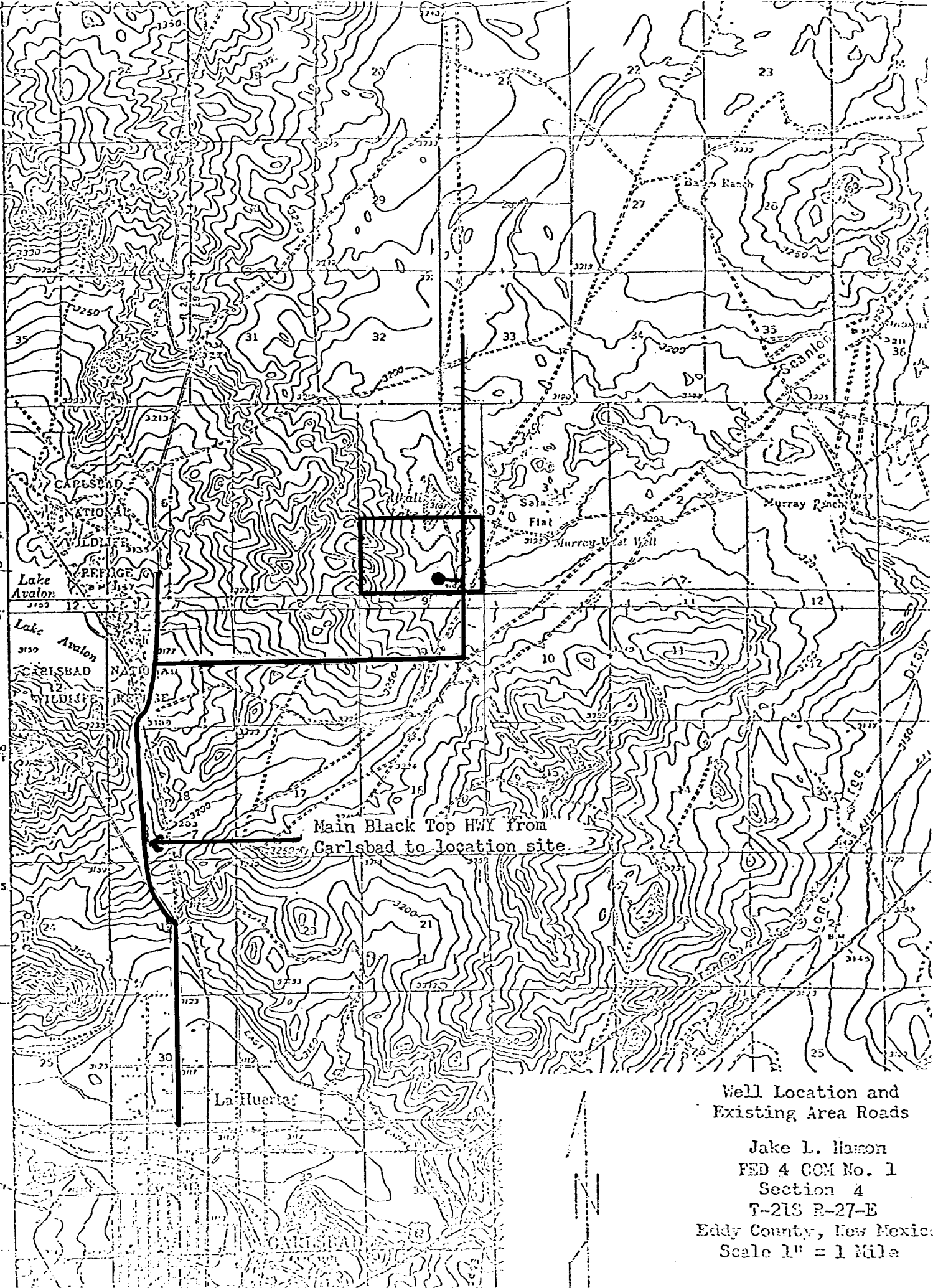
T. 21 S

ACTUAL PLUNG. U. S. 70-3901 79 MI.
SARFESTIA 34 MI.

100000
YARDS

32° 30'

50000
FEET



Main Black Top HWY from
Carlsbad to location site.

Well Location and
Existing Area Roads

Jake L. Hamon
FED 4 COM No. 1
Section 4
T-21S R-27-E
Eddy County, New Mexico
Scale 1" = 1 Mile