

NEW MEXICO OIL CONSERVATION COMMISSION
WELL LOCATION AND ACREAGE DEDICATION PLAT

Form C-102
Supersedes C-128
Effective 1-1-65

All distances must be from the outer boundaries of the Section

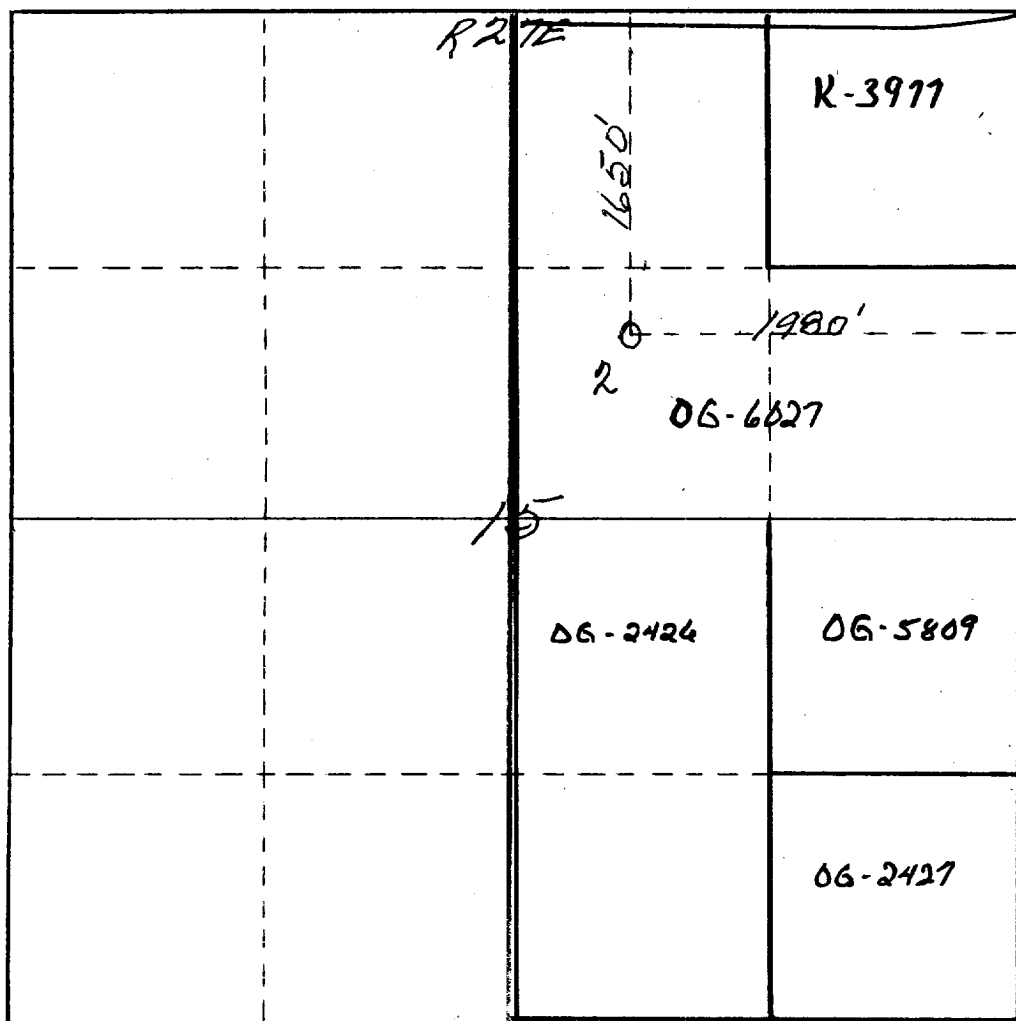
Operator HEYCO Inc.			Lease Cedar Hills Unit		Well No. 2
Unit Letter G	Section 15	Township 21 South	Range 27 East	County Eddy	
Actual Postage Location of Well: 1650 feet from the North line and 1980 feet from the East line					
Ground Level Elev. 3310'	Producing Formation Strawn Morrow		Pool Und. Burton Flat Morrow		Dedicated Acreage: 320 Acres

1. Outline the acreage dedicated to the subject well by colored pencil or hatchure marks on the plat below.
2. If more than one lease is dedicated to the well, outline each and identify the ownership thereof (both as to working interest and royalty).
3. If more than one lease of different ownership is dedicated to the well, have the interests of all owners been consolidated by communitization, unitization, force-pooling, etc?

☒ Yes ☐ No If answer is "yes," type of consolidation Communitization agreement dated 4/1/68

If answer is "no," list the owners and tract descriptions which have actually been consolidated. (Use reverse side of this form if necessary.) _____

No allowable will be assigned to the well until all interests have been consolidated (by communitization, unitization, forced-pooling, or otherwise) or until a non-standard unit, eliminating such interests, has been approved by the Commission.



CERTIFICATION

I hereby certify that the information contained herein is true and complete to the best of my knowledge and belief.

Name
Vice President
Position
Harvey E. Yates Company
Company
February 21, 1975
Date

I hereby certify that the well location shown on this plat was plotted from field notes of actual surveys made by me or under my supervision, and that the same is true and correct to the best of my knowledge and belief.

Date Surveyed
January 14th 1975
Registered Professional Engineer and/or Land Surveyor

Certificate No.
542

0 330 660 990 1320 1650 1980 2310 2640 2000 1500 1000 500