

UNITED STATES
DEPARTMENT OF THE INTERIOR
GEOLOGICAL SURVEY

30-015-21640

APPLICATION FOR PERMIT TO DRILL, DEEPEN, OR PLUG BACK

1a. TYPE OF WORK

DRILL ☒DEEPEN ☐PLUG BACK ☐

b. TYPE OF WELL

OIL
WELL ☐GAS
WELL ☒

OTHER

SINGLE
ZONE ☒MULTIPLE
ZONE ☐

2. NAME OF OPERATOR

Yates Petroleum Corporation

3. ADDRESS OF OPERATOR

207 South 4th Street - Artesia, NM 88210

4. LOCATION OF WELL (Report location clearly and in accordance with any State requirements.)*

At surface

1980' FSL & 1980' FEL of Sec. 29-20S-28E

At proposed prod. zone

14. DISTANCE IN MILES AND DIRECTION FROM NEAREST TOWN OR POST OFFICE*

7 miles NE of Calrsbad, NM

15. DISTANCE FROM PROPOSED*

LOCATION TO NEAREST
PROPERTY OR LEASE LINE, FT.
(Also to nearest drlg. unit line, if any)18. DISTANCE FROM PROPOSED LOCATION*
TO NEAREST WELL, DRILLING, COMPLETED,
OR APPLIED FOR, ON THIS LEASE, FT.

21. ELEVATIONS (Show whether DF, RT, GR, etc.)

3229' GR

16. NO. OF ACRES IN LEASE

17. NO. OF ACRES ASSIGNED
TO THIS WELL

O. C. C.

OFFICE

320

19. PROPOSED DEPTH

11600'

20. ROTARY OR CABLE TOOLS

Rotary

22. APPROX. DATE WORK WILL START*

Sept. 26, 1975

23.

PROPOSED CASING AND CEMENTING PROGRAM

SIZE OF HOLE	SIZE OF CASING	WEIGHT PER FOOT	SETTING DEPTH	QUANTITY OF CEMENT
17½"	13-3/8"	48#	600	Circulate
12½"-11"	8-5/8"	24 or 32#	2800'	Circulate
7-7/8"	5½ or 4½"	15.5-17# or 10.5-11.6#	TD	To be determined

Propose to drill and test the Morrow and intermediate formations. Approx 600' of surface pipe will be run to shut off gravel and surface cavings, and intermediate casing will be set in top of Delaware. Circulated. If commercial will run 5½" or 5½" casing.

Mud Program: - Gel & LCM to 2800', fresh water to 8400', brine to 10000', and Flosal-Drispak mud to TD.

BOP Program: - Hydril & BOP's on 8-5/8" casing and tested. To test pipe rams daily and blind rams on trips, to Yellow Jacket prior to drilling Wolfcamp formation.

IN ABOVE SPACE DESCRIBE PROPOSED PROGRAM: If proposal is to deepen or plug back, give data on present productive zone and proposed new productive zone. If proposal is to drill or deepen directionally, give pertinent data on subsurface locations and measured and true vertical depths. Give blowout preventer program, if any.

24.

SIGNED

Edwin L. Buehler

TITLE

Engineer

DATE

9-17-75

(This space for Federal or State office use)

PERMIT NO.

9-19-75

SUBJECT TO ATTACHED DEEP WELL CONTROL

REQUIREMENTS DATED

JUN 22 1973

APPROVAL DATE

Subject to CA

Prior to Production

TITLE

NOTIFY USGS IN SUFFICIENT TIME TO
WITNESS CEMENTING THE

DECLARED WATER BASIN

CEMENT BEING THE
CASING MUST BE CIRCULATEDTHIS APPROVAL IS RESCINDED IF OPERATIONS
ARE NOT COMMENCED WITHIN 3 MONTHS.
DEC 26 1975*See Instructions On Reverse Side
CEMENT BEING THE
MUST BE CIRCULATED

N MEXICO OIL CONSERVATION COMMISSION
WELL LOCATION AND ACREAGE DEDICATION PLAT

Form C-102
Supersedes C-128
Effective 1-1-67

All distances must be from the outer boundaries of the Section

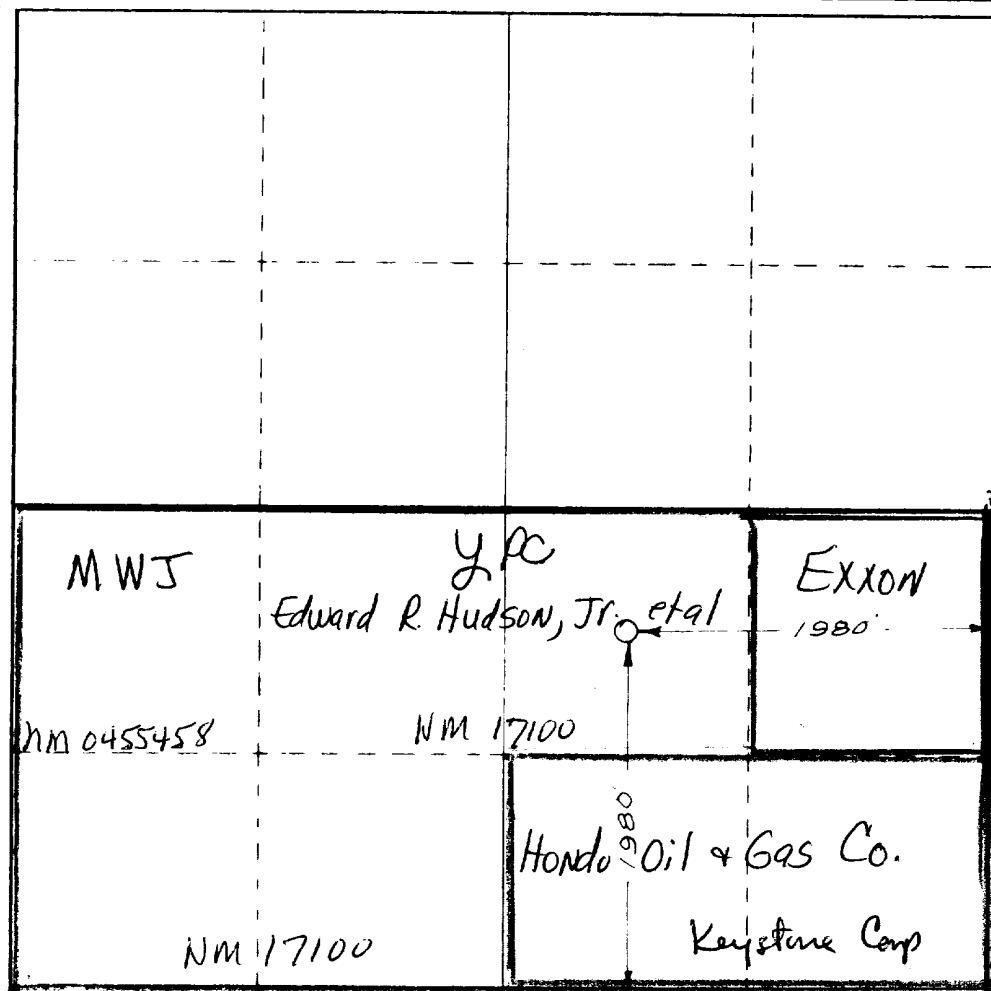
YATES PETROLEUM CORPORATION			Lease STONEWALL DS FEDERAL		Well No. 2
Section "J"	29	Township 20 South	Range 28 East	County Eddy	
A true location of Well:					
1980	feet from the	South	line and	1980	feet from the East line
Ground Level Elev. 3229	Producing Formation Morrow		Pool No. Burton Flats	Dedicated Acreage: 320 Acres	

- Outline the acreage dedicated to the subject well by colored pencil or hachure marks on the plat below.
- If more than one lease is dedicated to the well, outline each and identify the ownership thereof (both as to working interest and royalty).
- If more than one lease of different ownership is dedicated to the well, have the interests of all owners been consolidated by communitization, unitization, force-pooling, etc?

☒ Yes ☐ No If answer is "yes," type of consolidation To be communitized

If answer is "no," list the owners and tract descriptions which have actually been consolidated. (Use reverse side of this form if necessary.) _____

No allowable will be assigned to the well until all interests have been consolidated (by communitization, unitization, forced-pooling, or otherwise) or until a non-standard unit, eliminating such interests, has been approved by the Commission.



CERTIFICATION

I hereby certify that the information contained herein is true and complete to the best of my knowledge and belief.

Eddie M. Mahood
Name **Eddie M. Mahood**

Position **Engineer**

Company **Yates Petroleum Corp**

Date **9-17-75**

RECEIVED
SEP 18 1975

I hereby certify that the well location shown on this plat was obtained from field notes of accurate survey made by me or under my supervision, and that the same is true and correct to the best of my knowledge and belief.

Date Survey **September 12, 1975**
Registered Professional Engineer and/or Land Surveyor **HERSCHEL JONES**
3640

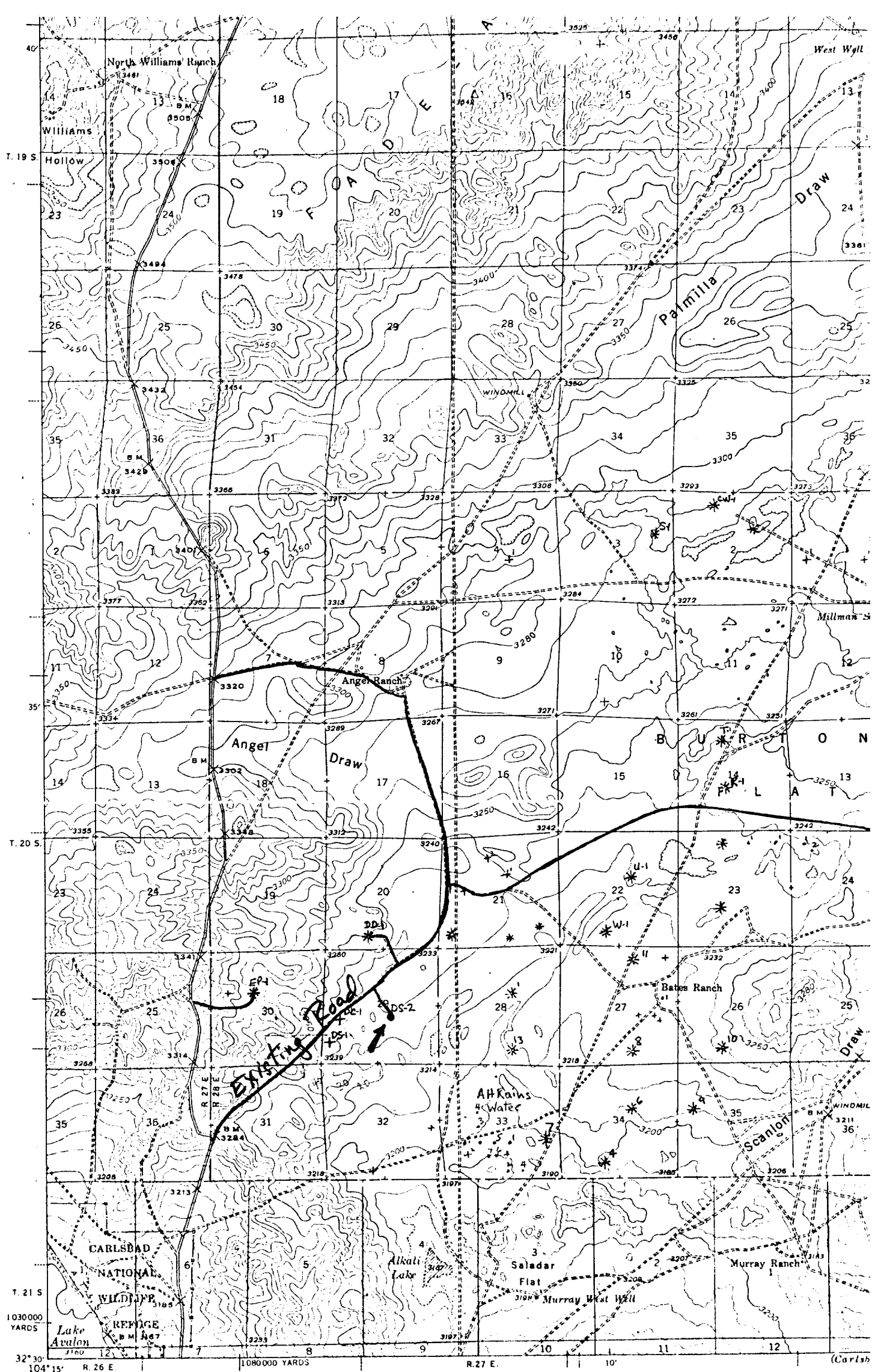
Certificate No. _____

330 660 990 1320 1650 1980 2310 2640 2000 1500 1000 500 0

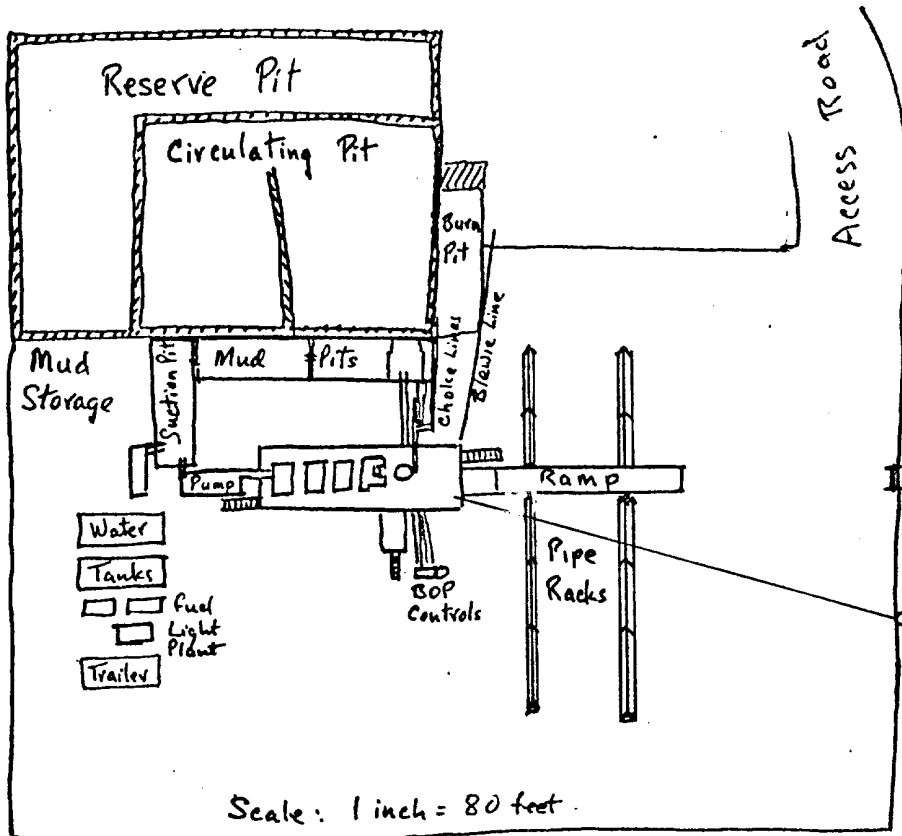
Yates Petroleum Corporation
Stonewall "DS" Federal # 2-Com
1980' FSL & 1980' FEL of Section 29-20S-28E
Eddy County, New Mexico

Development plan to accompany "Applications to Drill, Federal Lease".
12-Point Plan.

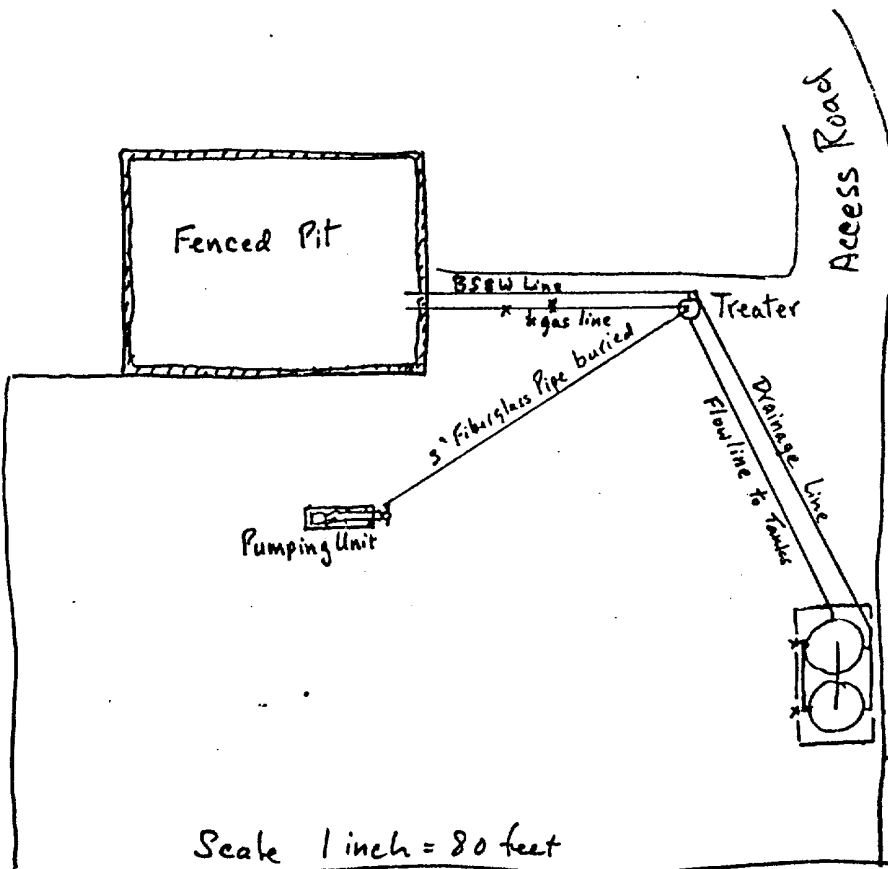
1. EXISTING ROADS: See Plat (Exhibit A) County maintained road from paved
Ill. Camp Road
2. PLANNED ACCESS ROADS: See Plat (Exhibit A) Bladed road with thin
caliche topping and maintain as needed.
3. LOCATION OF WELLS: See Plat (Exhibit A) Development well in No.
Burton Flats, Wolfcamp and Morrow gas fields.
4. LATERAL ROADS TO LOCATION: See Plat (Exhibit A) None required
5. LOCATION OF TANK BATTERY & FLOWLINES: See Plat (Exhibit C)
6. LOCATION & TYPES OF WATER SUPPLY: See Plat (Exhibit A) Will pipe
fresh water from A-H Raines source well; will truck brine water from
mines.
7. METHODS FOR HANDLING WASTE DISPOSAL: See Sketch (Exhibit C) Mud in
steel pits and reserve pits; trash and engine oil in burn pit.
8. LOCATION OF CAMPS: Not Applicable.
9. LOCATION OF AIRSTRIPS: Not Applicable.
10. LOCATION LAYOUT (rig, tanks, pits, racks, etc): See Sketch (Exhibit C)
11. PLANS FOR RESTORATION OF SURFACE: Pits will be fenced until dry then
leveled. Location will be cleaned and leveled, restored to near original
upon abandonment.
12. OTHER ENVIRONMENT INFORMATION: Rolling sparse grassland and sand dunes
with mesquite and desert brush



YPC- Stonewall "DS" Federal No.1 Com
 1980/S 1980/E See 29-205-28 E



Layout of Drilling Rig & Equipment

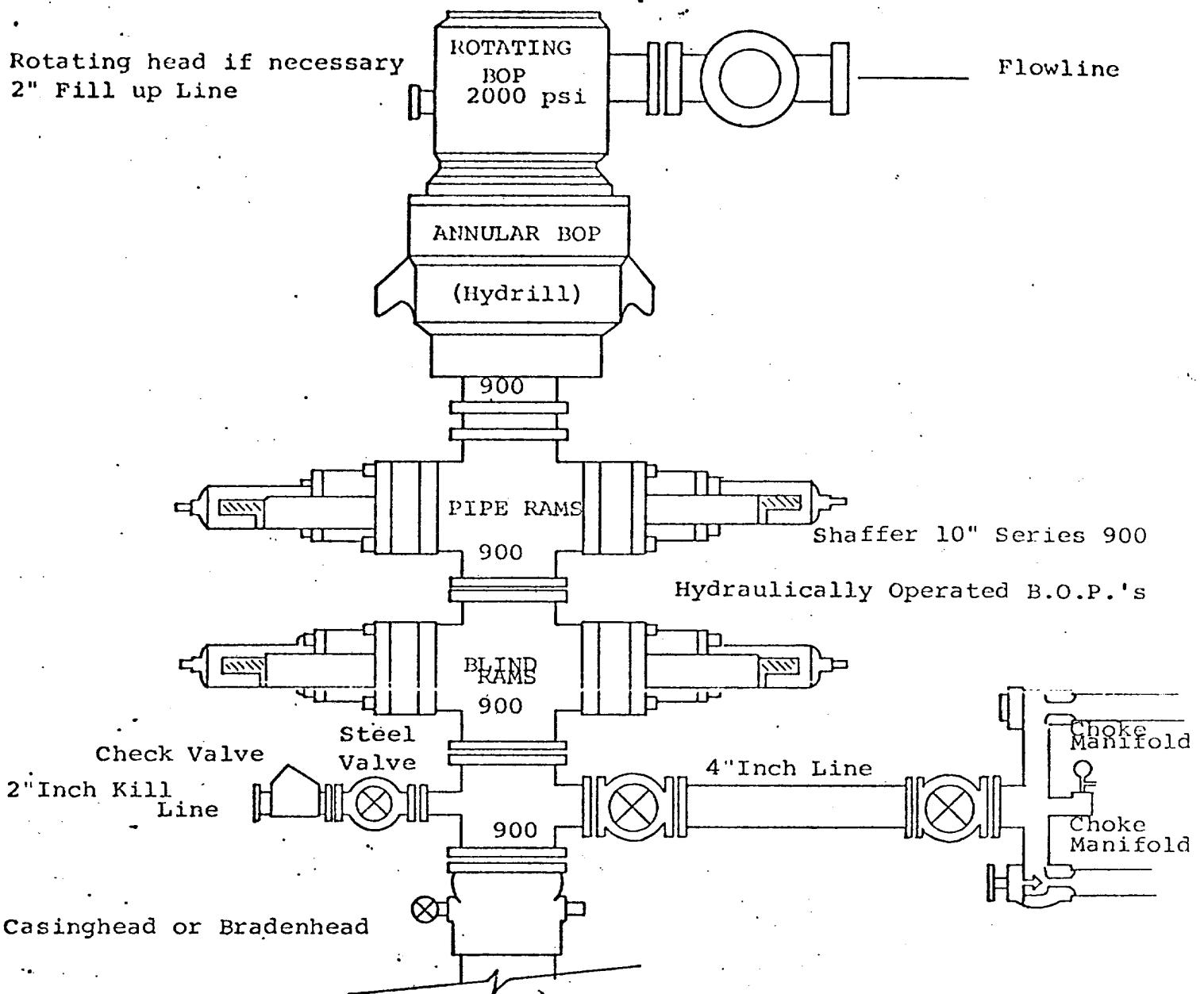


Layout of Production Facilities

Exhibit "C"

Yates Petroleum Corporation
 Stonewall "DS" Federal # 2-Com
 1980' FSL & 1980' FEL of Section 29-20S-28E
 Eddy County, New Mexico

BOP SKETCH



THE FOLLOWING CONSTITUTE MINIMUM BLOWOUT PREVENTER REQUIREMENTS

1. All preventers to be hydraulically operated with secondary manual controls installed prior to drilling out from under casing.
2. Choke outlet to be a minimum of 4" diameter.
3. Kill line to be of all steel construction of 2" minimum diameter.
4. All connections from operating manifolds to preventers to be all steel hole or tube a minimum of one inch in diameter.
5. The available closing pressure shall be at least 15% in excess of that required with sufficient volume to operate the B.O.P.'s.
6. All connections to and from preventer to have a pressure rating equivalent to that of the B.O.P.'s.
7. Inside blowout preventer to be available on rig floor.
8. Operating controls located a safe distance from the rig floor.
9. Hole must be kept filled on trips below intermediate casing. Operator not responsible for blowouts resulting from not keeping hole full.
10. D. P. float must be installed and used below zone of first gas intrusion.