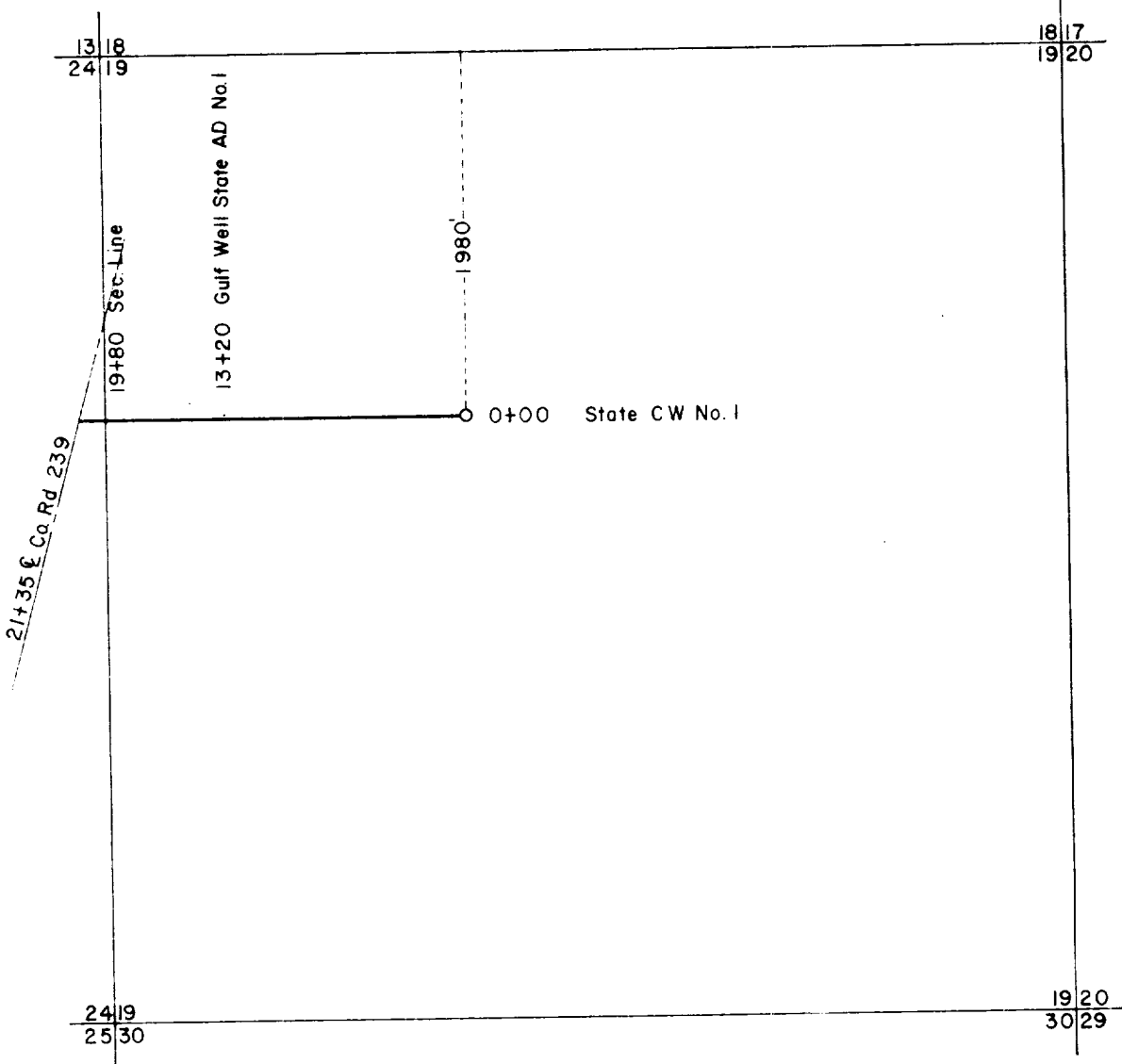


T-20-S, R-28-E



I HEREBY CERTIFY THAT THIS PLAT WAS MADE FROM NOTES TAKEN IN THE FIELD IN A BONA FIDE SURVEY MADE UNDER MY SUPERVISION, AND THAT THE SAME IS TRUE AND CORRECT TO THE BEST OF MY KNOWLEDGE AND BELIEF.

John W. West
JOHN W. WEST, N.M. P.E. & L.S. NO. 676
TEXAS R.P.S. NO. 1138

CITIES SERVICE OIL COMPANY	
Survey of Proposed Well Road located in Section 19 Township 20 South, Range 28 East, N.M.P.M., Eddy County, New Mexico.	
JOHN W. WEST ENGINEERING COMPANY CONSULTING ENGINEERS HOBBS, NEW MEXICO	
Scale 1"=1000'	Drawn by Presley
Date August 27, 1976	Sheet 1 of 1 Sheets