



SHELL OIL
COMPANY

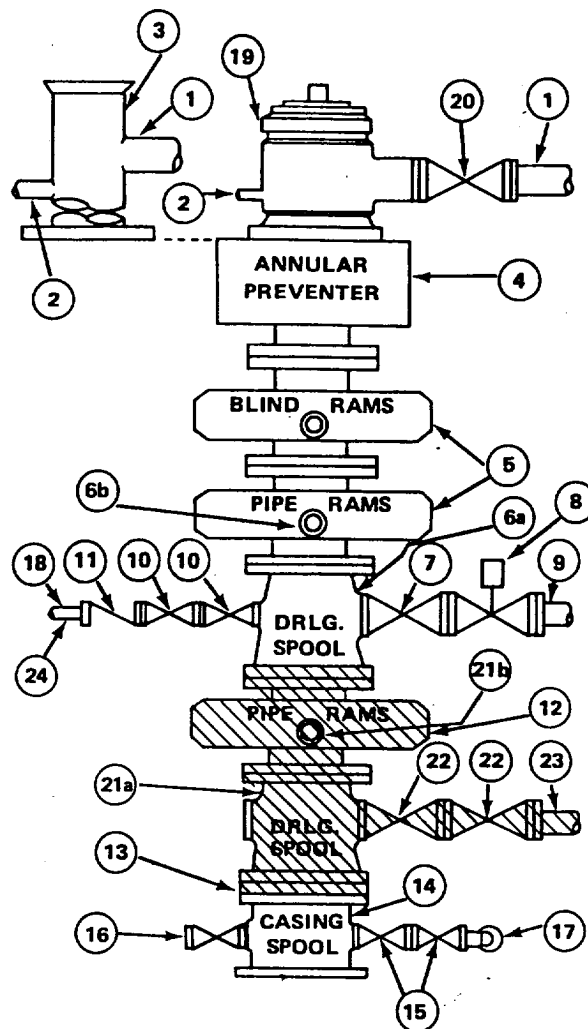
BOP CONFIGURATION
SHELL FEDERAL 6 NO. 1
EDDY COUNTY, NEW MEXICO

SHELL MINIMUM BOP STACK REQUIREMENTS			
No.	Item	Min. I.D.	Min. Nominal
1	Flowline		
2	Fill up Line		2"
3	Drilling Nipple		
4	Annular Preventer		
5	Two single or one dual hydraulically operated rams		
6a	Drilling spool with 2" and 3" min. outlets		
6b	Use ram outlets as alternate to 6a		
7	Valve Gate <input checked="" type="checkbox"/> Plug <input checked="" type="checkbox"/>	3-1/8"	
8	Gate Valve Power Operated	3-1/8"	
9	Line to choke manifold		3"
10	Valves Gate <input checked="" type="checkbox"/> Plug <input checked="" type="checkbox"/>	2-1/16"	
11	Check Valve	2-1/16"	
12	Single hydraulically operated ram		
13	Wear flange or bushing		
14	Casing spool		
15	Valves Gate <input checked="" type="checkbox"/> Plug <input checked="" type="checkbox"/>	1-13/16"	
16	Flanged control plug or valve	1-13/16"	
17	Compound pressure gauge		
18	Kill line to rig mud pump manifold		2"

NOTE: Additional specifications for Sour Service and Air-Gas Drilling are
given in Shell Well Control Manual, Appendix 5.20 and Appendix 5.21.

OPTIONAL			
19	Rotating Blowout Preventer*		
20	Power Operated gate valve	6"	
21a	Drilling spool with 3" outlet		
21b	3" outlet in ram preventer		
22	Valves Gate <input checked="" type="checkbox"/> Plug <input checked="" type="checkbox"/>	3 1/8"	
23	Auxiliary choke line		3"
24	Roadside connection to kill line		2"
	Shear ram blocks for blind rams		

* 3,000 psi rating



NOT USED IN THIS BOP CONFIGURATION

RECEIVED

SEP 16 1976

O. C. C.
ARTESIA, OFFICE