

**NEW MEXICO OIL CONSERVATION COMMISSION
WELL LOCATION AND ACREAGE DEDICATION (CAT)**

Form C-102
Supersedes C-128
Effective 1-1-65

All distances must be from the outer boundaries of the Section

Operator Morris R. Antweil			Lease Mesa Fuerte		Well No. 1
Section J	Section 33	Township 21 South	Range 26 East	County Eddy County, New Mexico	
Actual Footage Location of Well: 1833 feet from the South line and 1980 feet from the East line					
Ground Level Elev. 3238.57	Producing Formation Morrow	Pool Undesignated	Dedicated Acreage: 320 Acres		

1. Outline the acreage dedicated to the subject well by colored pencil or hachure marks on the plat below.
2. If more than one lease is dedicated to the well, outline each and identify the ownership thereof (both as to working interest and royalty). **See Reverse Side.**
3. If more than one lease of different ownership is dedicated to the well, have the interests of all owners been consolidated by communitization, unitization, force-pooling, etc?

☐ Yes ☒ No If answer is "yes," type of consolidation _____

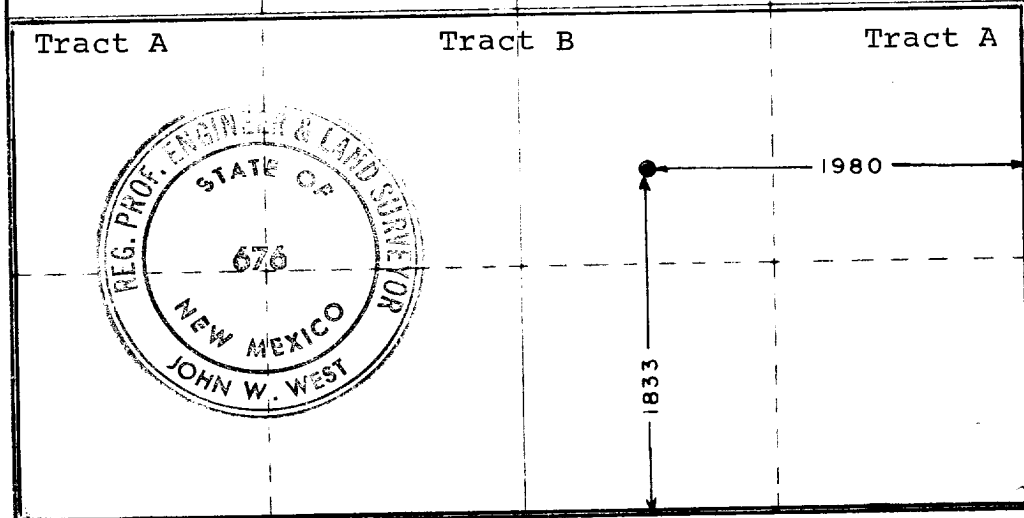
If answer is "no," list the owners and tract descriptions which have actually been consolidated. (Use reverse side of this form if necessary.) **Acreage will be communitized.**

No allowable will be assigned to the well until all interests have been consolidated (by communitization, unitization, forced-pooling, or otherwise) or until a non-standard unit, eliminating such interests, has been approved by the Commission.

RECEIVED

OCT 18 1976

**O. C. C.
ARTESIA, OFFICE**



CERTIFICATION

I hereby certify that the information contained herein is true and complete to the best of my knowledge and belief.

R M Williams

Name
R. M. Williams

Position
Agent

Company
Morris R. Antweil

Date
15 October, 1976

I hereby certify that the well location shown on this plat was plotted from field notes of actual surveys made by me or under my supervision, and that the same is true and correct to the best of my knowledge and belief.

October 13, 1976

Date Surveyed

Registered Professional Engineer and/or Land Surveyor

John W West

Certificate No. **676**

0 330 660 990 1320 1650 1980 2310 2640 2970 3300 3630 3960 4290 4620 4950 5280 5610 5940 6270 6600

Working Interest Ownership

Tract A - State Lease LG-3378
E/2 SE/4 & W/2 SW/4

Antveil & Mora - 100% W. I
Superior has reversionary W. I. after payout.

Tract B - Fric Lease - (Undivided)
E/2 SE/4 & W/2 SE/4
Antveil & Mora - 100% W.I.