

NO. OF COPIES RECEIVED	6
DISTRIBUTION	
SANTA FE	1
FILE	1
U.S.G.S.	2
LAND OFFICE	1
OPERATOR	1

NEW MEXICO OIL CONSERVATION COMMISSION **RECEIVED**

JUN 29 1978

**O. C. C.**  
**ARTESIA, OFFICE**

Form C-101  
Revised 1-1-65

5A. Indicate Type of Lease  
STATE ☒ FEE ☐  
5. State Oil & Gas Lease No.  
**K-6853**

**APPLICATION FOR PERMIT TO DRILL, DEEPEN, OR PLUG BACK**

1a. Type of Work		7. Unit Agreement Name	
b. Type of Well OIL WELL <input type="checkbox"/> GAS WELL <input checked="" type="checkbox"/> OTHER <input type="checkbox"/> DRILL <input type="checkbox"/> DEEPEN <input type="checkbox"/> PLUG BACK <input checked="" type="checkbox"/>		8. Farm or Lease Name <b>MWJ State Com</b>	
2. Name of Operator <b>Yates Petroleum Corporation</b>		9. Well No. <b>1</b>	
3. Address of Operator <b>207 South 4th Street - Artesia, NM 88210</b>		10. Field and Pool, or Wildcat <del>Barren Plot Morrow</del> <b>Unit 1, State</b>	
4. Location of Well UNIT LETTER <b>K</b> LOCATED <b>1980</b> FEET FROM THE <b>South</b> LINE AND <b>1980</b> FEET FROM THE <b>West</b> LINE OF SEC. <b>36</b> TWP. <b>20S</b> RGE. <b>27E</b> NMPM		12. County <b>Eddy</b>	
21. Elevations (Show whether DF, RT, etc.) <b>3263' KB</b>		19. Proposed Depth <b>PB 10766</b>	19A. Formation <b>Atoka</b>
21A. Kind & Status Plug. Bond <b>Blanket</b>		21B. Drilling Contractor <b>Peabody-Vann</b>	20. Rotary or C.T. <b>Wireline</b>
23.		22. Approx. Date Work will start <b>June 29, 1978</b>	

**PROPOSED CASING AND CEMENT PROGRAM**

SIZE OF HOLE	SIZE OF CASING	WEIGHT PER FOOT	SETTING DEPTH	SACKS OF CEMENT	EST. TOP
17 1/2"	13-3/8"	48#	500'	200 sx	Circ.
12 1/4"	8-5/8"	24#	2400'	1300 sx	Circ.
7-7/8"	4 1/2"	11.6&13.5#	10300'	300 sx	8919'

We are now unable to sustain Morrow production and propose to abandon the Morrow Sands, to perforate the Atoka at 10752-10756' and stimulate as needed for production. We propose to swab the fluid off of the Morrow zone then set a CIBP at 10766' before perforating the Atoka. Top of cement behind the 2-7/8" production casing is 10310'.

IN ABOVE SPACE DESCRIBE PROPOSED PROGRAM: IF PROPOSAL IS TO DEEPEN OR PLUG BACK, GIVE DATA ON PRESENT PRODUCTIVE ZONE AND PROPOSED NEW PRODUCTIVE ZONE. GIVE BLOWOUT PREVENTER PROGRAM, IF ANY.  
I hereby certify that the information above is true and complete to the best of my knowledge and belief.

Signed Eddie M. Mahford Title Engineer Date 6-28-78  
(This space for State Use)

APPROVED BY W. A. Gressett TITLE SUPERVISOR, DISTRICT II DATE JUN 30 1978  
CONDITIONS OF APPROVAL, IF ANY:

NEW MEXICO OIL CONSERVATION COMMISSION  
WELL LOCATION AND ACREAGE DEDICATION PLAT

Form C-102  
Supersedes C-128  
Effective 1-1-65

All distances must be from the outer boundaries of the Section.

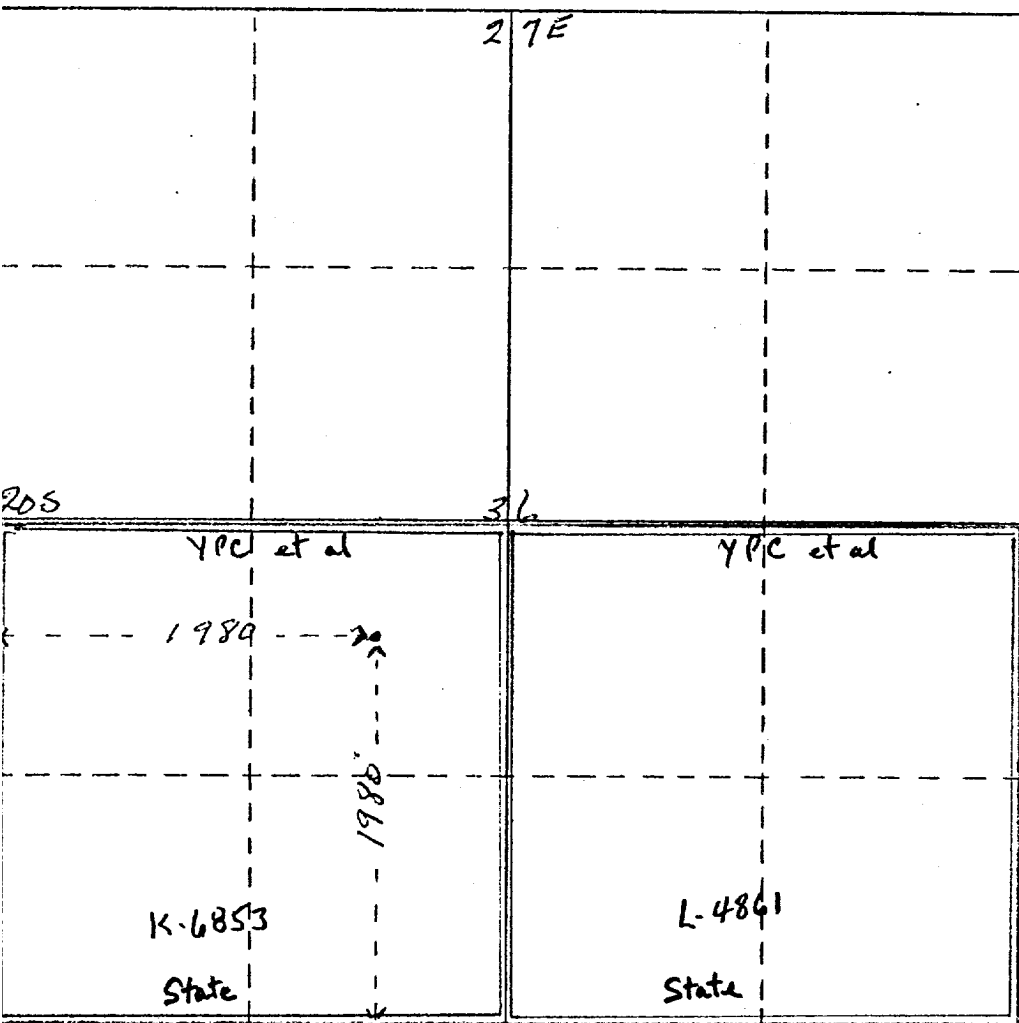
Operator <b>Yates Petroleum Corporation</b>			Lease <b>GW</b> <b>MWJ ON State Com</b>		Well No. <b>1</b>
Init Letter <b>K</b>	Section <b>36</b>	Township <b>20S</b>	Range <b>27E</b>	County <b>Eddy</b>	
Actual Footage Location of Well: <b>1980</b> feet from the <b>South</b> line and <b>1980</b> feet from the <b>West</b> line					
Ground Level Elev. <b>3263' KB</b>	Producing Formation <b>Atoka</b>		Pool <b>Und. <del>Barton</del> Atoka</b>	Dedicated Acreage: <b>320</b> Acres	

1. Outline the acreage dedicated to the subject well by colored pencil or hatchure marks on the plat below.
2. If more than one lease is dedicated to the well, outline each and identify the ownership thereof (both as to working interest and royalty).
3. If more than one lease of different ownership is dedicated to the well, have the interests of all owners been consolidated by communitization, unitization, force-pooling, etc?

☐ Yes ☐ No If answer is "yes," type of consolidation Comunitized

If answer is "no," list the owners and tract descriptions which have actually been consolidated. (Use reverse side of this form if necessary.)

No allowable will be assigned to the well until all interests have been consolidated (by communitization, unitization, forced-pooling, or otherwise) or until a non-standard unit, eliminating such interests, has been approved by the Commission.



CERTIFICATION

I hereby certify that the information contained herein is true and complete to the best of my knowledge and belief.

*Eddie M. Mahfood*  
Name

Eddie M. Mahfood

Position

Engineer

Company

Yates Petroleum Corp.

Date

6-28-78

I hereby certify that the well location shown on this plat was plotted from field notes of actual surveys made by me or under my supervision, and that the same is true and correct to the best of my knowledge and belief.

Refer to Original Plat

Date Surveyed

Registered Professional Engineer  
and/or Land Surveyor

Certificate No.

330 660 90 1320 1650 1980 2310 2640 2000 1500 1000 500 0