

NEW MEXICO OIL CONSERVATION COMMISSION
WELL LOCATION AND ACREAGE DEDICATION

Form C-102
 Supersedes C-128
 Effective 1-1-65

All distances must be from the outer boundaries of the Section.

Operator Yates Petroleum Corporation			Lease El Paso Federal "66"		Well No. 1
Unit Letter J	Section 11	Township 21S	Range 21E	County Eddy	
Actual Footage Location of Well: 1930 feet from the South line and 2080 feet from the East line					
Ground Level Elev. 4556	Producing Formation Cisco	Pool Undesignated		Dedicated Acreage: 320 Acres	

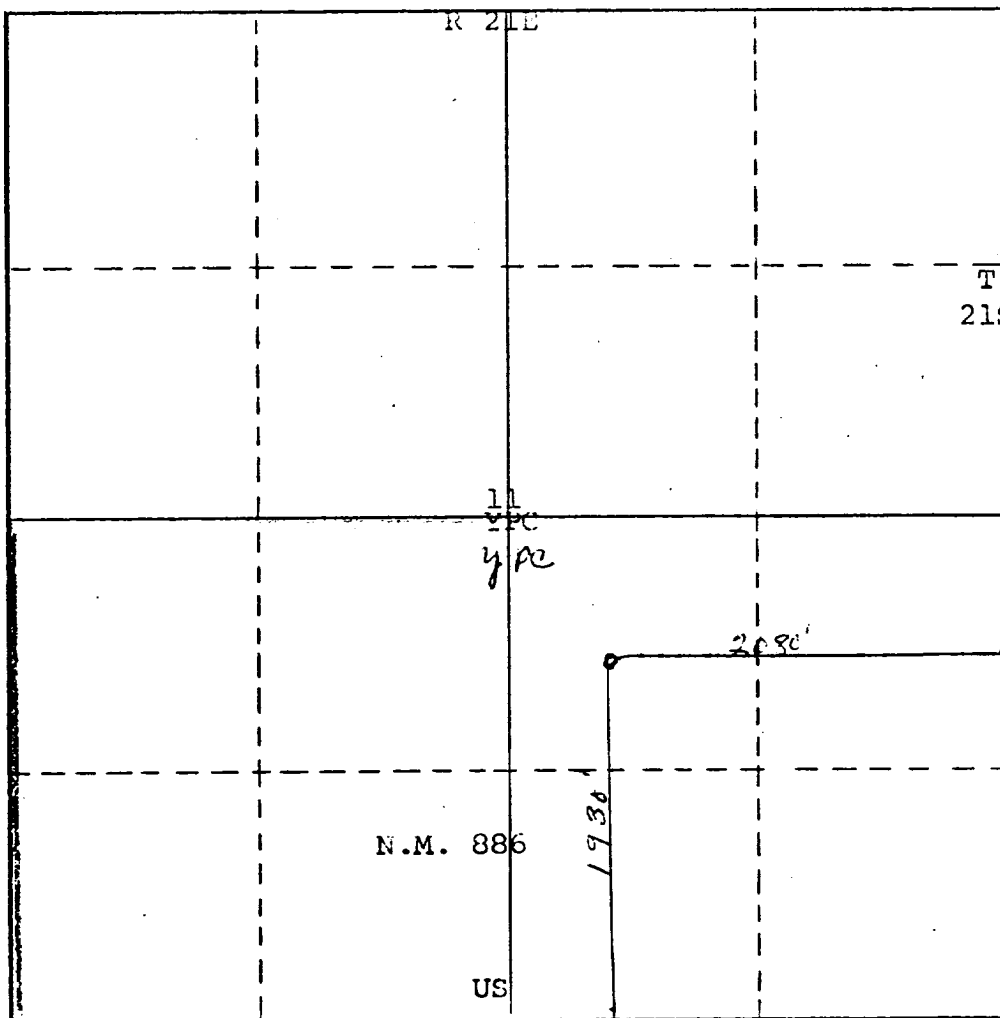
1. Outline the acreage dedicated to the subject well by colored pencil or hachure marks on the plat below.
2. If more than one lease is dedicated to the well, outline each and identify the ownership thereof (both as to working interest and royalty).
3. If more than one lease of different ownership is dedicated to the well, have the interests of all owners been consolidated by communitization, unitization, force-pooling, etc?

☐ Yes ☐ No If answer is "yes," type of consolidation _____

If answer is "no," list the owners and tract descriptions which have actually been consolidated (Use reverse side of this form if necessary.) _____

No allowable will be assigned to the well until all interests have been consolidated (by communitization, unitization, forced-pooling, or otherwise) or until a non-standard unit, eliminating such interests, has been approved by the Commission.

RECEIVED
FEB 25 1977
 U.S. GEOLOGICAL SURVEY
 ARTESIA, NEW MEXICO



CERTIFICATION

I hereby certify that the information contained herein is true and complete to the best of my knowledge and belief.

Eddie M. Mahfood
 Name

Eddie M. Mahfood

Position
 Engineer

Company
 Yates Petroleum Corp.

Date
 2-23-77

I hereby certify that the well location shown on this plat was plotted from field notes of actual surveys made by me or under my supervision, and that the same is true and correct to the best of my knowledge and belief.

Refer to Original Plat

Date Surveyed
HEXKEN Dated-9-25-76

Registered Professional Engineer
 and/or Land Surveyor

Certificate No.