

NEW MEXICO OIL CONSERVATION COMMISSION
WELL LOCATION AND ACREAGE DEDICATION PLAT

Form C-102
Supersedes C-128
Effective 1-1-65

NMOCC COPY

All distances must be from the outer boundaries of the Section

Copy to SF

Operator CITIES SERVICE OIL COMPANY		Lease Government "AD"		Well No. 2	
Unit Letter E	Section 27	Township 21 South	Range 27 East	County Eddy	
Actual Location of Well: 2310 feet from the north line and 660 feet from the west line					
Ground Level Elev. 3217.2	Producing Formation Wolfcamp		Pool East Carlsbad Wellcamp	Dedicated Acreage: 320 Acres	

- Outline the acreage dedicated to the subject well by colored pencil or hachure marks on the plat below.
- If more than one lease is dedicated to the well, outline each and identify the ownership thereof (both as to working interest and royalty).

RECEIVED RECEIVED

NOV 22 1977

NOV 16 1977

- If more than one lease of different ownership is dedicated to the well, have the interests of all owners been consolidated by communitization, unitization, force-pooling, etc?

O. C. C.

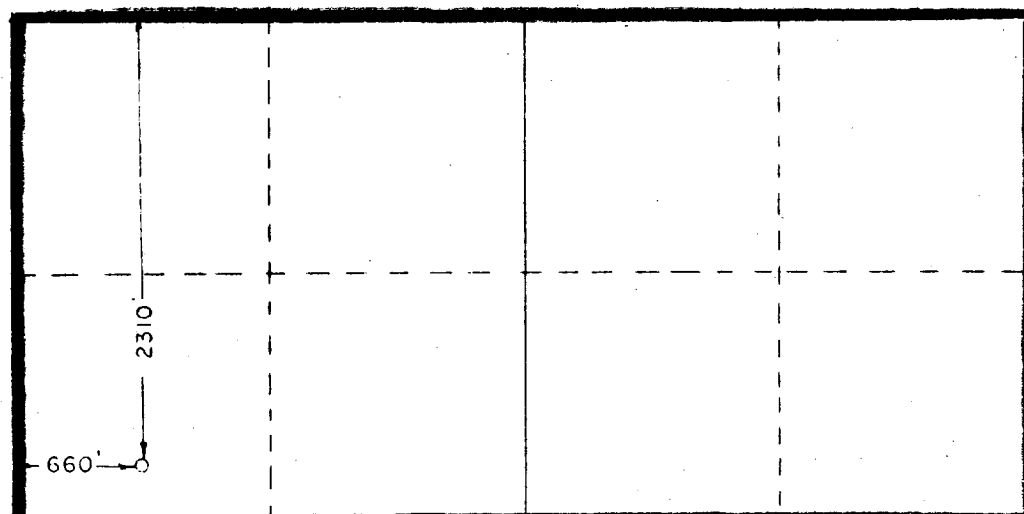
ARTESIA, OFFICE

U.S. GEOLOGICAL SURVEY
ARTESIA, NEW MEXICO

☐ Yes ☐ No If answer is "yes," type of consolidation

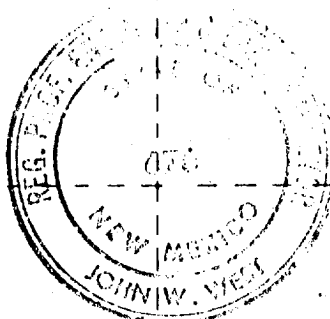
If answer is "no," list the owners and tract descriptions which have actually been consolidated. (Use reverse side of this form if necessary.)

No allowable will be assigned to the well until all interests have been consolidated (by communitization, unitization, forced-pooling, or otherwise) or until a non-standard unit, eliminating such interests, has been approved by the Commission.



Unit block consists of 4932 acres. Working interests of participating companies in this well are as follows:

Cities Service	36.69185%
Amoco Production	22.18587%
Amarillo Oil Co.	16.63940%
Flag-Redfern Oil Co.	16.63940%
Union Oil Co. of Cal.	4.43026%
Champlin Petro. Co.	1.70661%
Pateil Corporation	1.70661%
	100.00000%



CERTIFICATION

I hereby certify that the information contained herein is true and complete to the best of my knowledge and belief.

Name **E. J. Smith**
Position **Region Operation Manager**
Company **Cities Service Company**

Date
November 14, 1977

I hereby certify that the well location shown on this plat was plotted from field notes of actual surveys made by me or under my supervision, and that the same is true and correct to the best of my knowledge and belief.

Date Surveyed
Dec. 3, 1976

Registered Professional Engineer
and/or Licensed Surveyor

John W. Wells

Certificate No. **676**