

UNITED STATES
DEPARTMENT OF THE INTERIOR
BUREAU OF LAND MANAGEMENT

SUBMITTAL SLIP
(Other instructions on
reverse side)

Form approved.
Budget Bureau No. 1004-0136
Expires August 31, 1985

MAR - 5 1992

30015220310001

APPLICATION FOR PERMIT TO DRILL, DEEPEN, OR PLUG BACK

1a. TYPE OF WORK DRILL <input type="checkbox"/> DEEPEN <input checked="" type="checkbox"/> PLUG BACK <input type="checkbox"/>			5. LEASE DESIGNATION AND SERIAL NO. NM0354232 - SRM1317
b. TYPE OF WELL OIL WELL <input type="checkbox"/> GAS WELL <input checked="" type="checkbox"/> OTHER <input type="checkbox"/> SINGLE ZONE <input checked="" type="checkbox"/> MULTIPLE ZONE <input type="checkbox"/>			6. IF INDIAN, ALLOTTEE OR TRIBE NAME
2. NAME OF OPERATOR OXY USA Inc.			7. UNIT AGREEMENT NAME
3. ADDRESS OF OPERATOR P.O. Box 50250 Midland, TX. 79710			8. FARM OR LEASE NAME Elizondo A Federal
4. LOCATION OF WELL (Report location clearly and in accordance with any State requirements.) At surface 1780 FSL 2180 FWL Sec 34 T21S R27E At proposed prod. zone			9. WELL NO. 5
14. DISTANCE IN MILES AND DIRECTION FROM NEAREST TOWN OR POST OFFICE* 2 1/2 mi E of Carlsbad, NM			10. FIELD AND POOL, OR WILDCAT Carlsbad Morrow, South
10. DISTANCE FROM PROPOSED* LOCATION TO NEAREST PROPERTY OR LEASE LINE, FT. (Also to nearest drig. unit line, if any) 1780			11. SEC., T., R., M., OR BLK. AND SURVEY OR AREA Sec 34 T21S R27E
18. DISTANCE FROM PROPOSED LOCATION* TO NEAREST WELL, DRILLING, COMPLETED, OR APPLIED FOR, ON THIS LEASE, FT. N/A			12. COUNTY OR PARISH Eddy
16. NO. OF ACRES IN LEASE 320			13. STATE NM
19. PROPOSED DEPTH 11720'			17. NO. OF ACRES ASSIGNED TO THIS WELL 320
20. ROTARY OR CABLE TOOLS			22. APPROX. DATE WORK WILL START* ASAP
21. ELEVATIONS (Show whether DF, RT, GR, etc.) 3143'			

23. PROPOSED CASING AND CEMENTING PROGRAM				
SIZE OF HOLE	SIZE OF CASING	WEIGHT PER FOOT	SETTING DEPTH	QUANTITY OF CEMENT
17 1/2"	13 3/8"	54.5#	605'	850
12 1/4"	8 5/8"	24-32#	3000'	1600
7 7/8"	5 1/2"	17-20#	11830'	750

TD - 11830' PBTD - 11300' Wolfcamp Perfs - 9579'-9585'

It is proposed to plug off the Wolfcamp & test the Morrow in the following manner:

SEE OTHER SIDE

IN ABOVE SPACE DESCRIBE PROPOSED PROGRAM: If proposal is to deepen or plug back, give data on present productive zone and proposed new productive zone. If proposal is to drill or deepen directionally, give pertinent data on subsurface locations and measured and true vertical depths. Give blowout preventer program, if any.

24. SIGNED [Signature] TITLE Production Accountant DATE 1/13/92

(This space for Federal or State office use)

PERMIT NO. [Signature] APPROVAL DATE 3 2 92
APPROVED BY [Signature] TITLE [Signature] DATE 3 2 92
CONDITIONS OF APPROVAL, IF ANY:

*See Instructions On Reverse Side

- 1.) MIRU PU. Kill well w/ produced water, ND WH, NU BOP. Release packer and TOOH w/ 2 7/8" tbg and Baker Lok-Set pkr.
- 2.) TIH w/ cement retainer on 2 7/8" tbg to 9500' and set retainer. Establish injection rate into Wolfcamp perfs (9579' - 9585'). Pressure backside to 1000#. Squeeze Wolfcamp perfs (9579' - 9585') w/ 100 sx Class H + 0.6% Halad-9. Sting out of cement retainer. Reverse excess cement to pit. TOOH w/ tbg and SION.
- 3.) TIH w/ 4 5/8" RB and 6 - 3 1/2" DC's on 2 7/8" tbg and tag cmt retainer. Drill out cmt retainer and cmt. Pressure test csg to 1000#. FIH w/ tbg and tag PBTD @ 11300'. Drill out cmt and CIBP @ 11300'. FIH to new PBTD of 11720'. TOOH w/ RB, DC's, and tbg.
- 4.) TIH w/ 2 3/8" mule shoed tbg sub, 5 1/2" Baker Lok-Set pkr, on-off tool w/ 1.87" profile nipple on 2 7/8" tbg. Set pkr @ ±11300'.
- 5.) RU perforators, perforate Morrow formation (11421' - 11568') w/ a thru tbg gun using premium shots 2 JSPF at the following depths: 11421', 26', 28', 36', 37', 38', 40', 44', 46', 47', 11500', 01', 02', 03', 06', 08', 10', 55', 57', 58', 60', 62', 63', 64', 66', 11568'. Total of 52 holes. Depth reference log Schlumberger Compensated Neutron - Formation Density Log dated June 9, 1977.
Note: The Morrow is already perforated at the following depths: 11406', 19', 20', 27', 31', 39', 45', 11504', 05', 07', 09', 49', 54', 56', 59', 61', 65', 11567'. Total of 36 holes.
- 6.) Test well natural.
- 7.) Acidize Morrow formation (11406' - 11568') w/ 6000 gals 7.5% Ne Fe HCl containing 1000 SCF N₂ per bbl and 120 - 7/8" RCNBS at 5 BPM (liquid rate). Flush w/ 2% KCl water containing 1000 SCF N₂ per bbl. Flow back and recover load. Test well.
- 8.) If necessary, install tree saver and RU backside pump. Frac Morrow perfs (11406' - 11568') w/ 16,500 gals gelled 2% KCl wtr (25% methanol) and 16,500 gals CO₂ containing 30,000# Super HS resin coated 20/40 Super HS sand as follows:
 - a.) Pump 2250 gals gelled water and 2250 gals CO₂ as pad.
 - b.) Pump 1500 gals gelled water and 1500 gals CO₂ containing 0.5 ppg Resin coated 20/40 sand.
 - c.) Pump 1500 gals gelled water and 1500 gals CO₂ containing 1.0 ppg Resin coated 20/40 sand.
 - d.) Pump 1500 gals gelled water and 1500 gals CO₂ containing 1.5 ppg Resin coated 20/40 sand.
 - e.) Pump 1500 gals gelled water and 1500 gals CO₂ containing 2.0 ppg Resin coated 20/40 sand.
 - f.) Drop 60 7/8" RCNBS.
 - g.) Repeat steps a through e
 - h.) Flush w/ 50/50 mixture of base frac fluid and CO₂.
 - i.) SI 3 hours.
 - j.) Open well on 16/64" choke and flow back well.

Anticipated treating pressure 8000#, maximum treating pressure 8500#.
- 9.) SI well for 72 hours. RU wireline and set tandem BHP bombs w/ 6000# elements and 24 day clocks in profile nipple. Run 4-pt test.
- 10.) RU wireline and set blanking plug in profile nipple. Release on-off tool and circ hole w/ 2% KCl water containing 3 gals per thousand Unichem Techni-hib 370 pkr fluid (or equivalent). Latch onto pkr w/ on-off tool. Pressure test tubing to 3000#. RU wireline and retrieve blanking plug. Put well on production.

Submit to Appropriate
District Office
State Lease - 4 copies
Fee Lease - 3 copies

State of New Mexico
Energy, Minerals and Natural Resources Department

Form C-102
Revised 1-1-89

OIL CONSERVATION DIVISION

P.O. Box 2088
Santa Fe, New Mexico 87504-2088

DISTRICT I
P.O. Box 1980, Hobbs, NM 88240

DISTRICT II
P.O. Drawer DD, Artesia, NM 88210

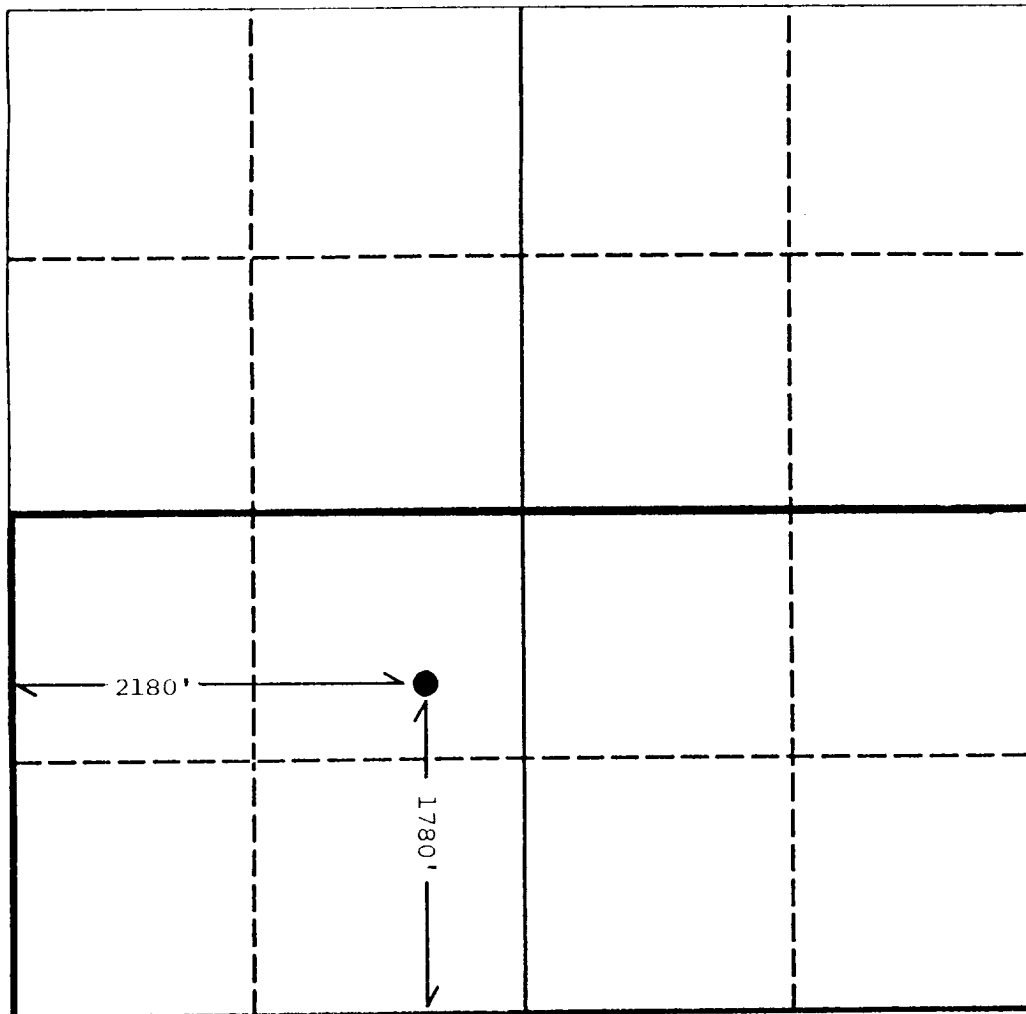
DISTRICT III
1000 Rio Brazos Rd., Aztec, NM 87410

WELL LOCATION AND ACREAGE DEDICATION PLAT

All Distances must be from the outer boundaries of the section

Operator OXY USA Inc.			Lease Elizondo A Federal		Well No. 5
Unit Letter K	Section 34	Township 21S	Range 27E	County NMPM Eddy	
Actual Footage Location of Well: 1780 feet from the South line and 2180 feet from the West line					
Ground level Elev. 3143'		Producing Formation Morrow		Pool South Carlsbad	
				Dedicated Acreage: 320 Acres	

1. Outline the acreage dedicated to the subject well by colored pencil or hatchure marks on the plat below.
2. If more than one lease is dedicated to the well, outline each and identify the ownership thereof (both as to working interest and royalty).
3. If more than one lease of different ownership is dedicated to the well, have the interest of all owners been consolidated by communitization, unitization, force-pooling, etc.?
☐ Yes ☐ No If answer is "yes" type of consolidation _____
If answer is "no" list the owners and tract descriptions which have actually been consolidated. (Use reverse side of this form if necessary.) _____
No allowable will be assigned to the well until all interests have been consolidated (by communitization, unitization, forced-pooling, or otherwise) or until a non-standard unit, eliminating such interest, has been approved by the Division.



OPERATOR CERTIFICATION

I hereby certify that the information contained herein is true and complete to the best of my knowledge and belief.

Signature

Printed Name

David Stewart

Position

Prod. Acct.

Company

OXY USA Inc.

Date

1/13/92

SURVEYOR CERTIFICATION

I hereby certify that the well location shown on this plat was plotted from field notes of actual surveys made by me or under my supervision, and that the same is true and correct to the best of my knowledge and belief.

Date Surveyed

Signature & Seal of
Professional Surveyor

Certificate No.