

UNITED STATES
DEPARTMENT OF THE INTERIOR
GEOLOGICAL SURVEY

30-015-22239

APPLICATION FOR PERMIT TO DRILL, DEEPEN, OR PLUG BACK

1a. TYPE OF WORK

DRILL ☒

DEEPEN ☐

PLUG BACK ☐

b. TYPE OF WELL

OIL WELL ☐

GAS WELL ☒

OTHER

SINGLE ZONE ☒

MULTIPLE ZONE ☐

2. NAME OF OPERATOR

Atlantic Richfield Company

3. ADDRESS OF OPERATOR

R. O. Box 1710, Hobbs, New Mexico 88240

4. LOCATION OF WELL (Report location clearly and in accordance with any State requirements.)

At surface

660' FEL & 1980' FSL (Unit letter I)

At proposed prod. zone

as above

14. DISTANCE IN MILES AND DIRECTION FROM NEAREST TOWN OR POST OFFICE*

10.2 miles NW of Carlsbad, N.M.

15. DISTANCE FROM PROPOSED*

LOCATION TO NEAREST PROPERTY OR LEASE LINE, FT.
(Also to nearest drlg. unit line, if any)

16. NO. OF ACRES IN LEASE

320

17. NO. OF ACRES ASSIGNED TO THIS WELL

320

18. DISTANCE FROM PROPOSED LOCATION* TO NEAREST WELL, DRILLING, COMPLETED, OR APPLIED FOR, ON THIS LEASE, FT.

19. PROPOSED DEPTH

11,000'

20. ROTARY OR CABLE TOOLS

Rotary

21. ELEVATIONS (Show whether DF, RT, GR, etc.)

3213.7' GR

22. APPROX. DATE WORK WILL START*

7/15/77

PROPOSED CASING AND CEMENTING PROGRAM

SIZE OF HOLE	SIZE OF CASING	WEIGHT PER FOOT	SETTING DEPTH	QUANTITY OF CEMENT
17 1/2"	13-3/8" OD	54.5# K-55	500'	425 sx, circ to surface
12 1/4"	9-5/8" OD	36# K-55	2100'	800 sx, circ to surface
7-7/8"	5-1/2" OD	17# N-80	11000'	875 sx, est top @ 7000' FS
		17# K-55	8100'	
	above csg	15.5# K-55	5900'	
	new	17# K-55	1550'	

Gas is not dedicated

Blowout preventer program attached.

NSL
Case # 6015
8-17-77 RJS

RECEIVED
JUN 24 1977
U.S. GEOLOGICAL SURVEY
ARTESIA, NEW MEXICO
AUG 3 1977
O. C. C.
ARTESIA, OFFICE

IN ABOVE SPACE DESCRIBE PROPOSED PROGRAM: If proposal is to deepen or plug back, give data on present productive zone and proposed new productive zone. If proposal is to drill or deepen directionally, give pertinent data on subsurface locations and measured and true vertical depths. Give blowout preventer program, if any.

24.

SIGNED

TITLE Dist. Drilling Supt.

DATE 6/22/77

(This space for Federal or State office use)

PERMIT NO.

APPROVAL DATE

APPROVED BY
SIGNATURES OF APPROVAL, IF ANY:

TITLE IF OPERATIONS
ARE NOT COMMENCED WITHIN 3 MONTHS.

THIS APPROVAL IS RESCINDED
EXPIRES NOV 2 - 1977

*See Instructions On Reverse Side

APPROVED
AUG 2 - 1977
R. L. GLENN
ACTING DISTRICT ENGINEER

Subject to NMOCC
approval as
in attached location

NEW MEXICO OIL CONSERVATION COMMISSION
WELL LOCATION AND ACREAGE DEDICATION PLAT

Form 1-77
Supersedes Form 1-76
Effective 1-1-77

All distances must be from the outer boundaries of the well pad.

Atlantic Richfield Co.		Pecos Fed. Gas Com.		Well No. 1
Section 32	Township 20 South	Range 27 East	County Eddy	
Well Location (feet)		Well Depth (feet)		
660		1980		
Line and		South		
3213.7		Morrow		329.03
Avalon		Morrow		

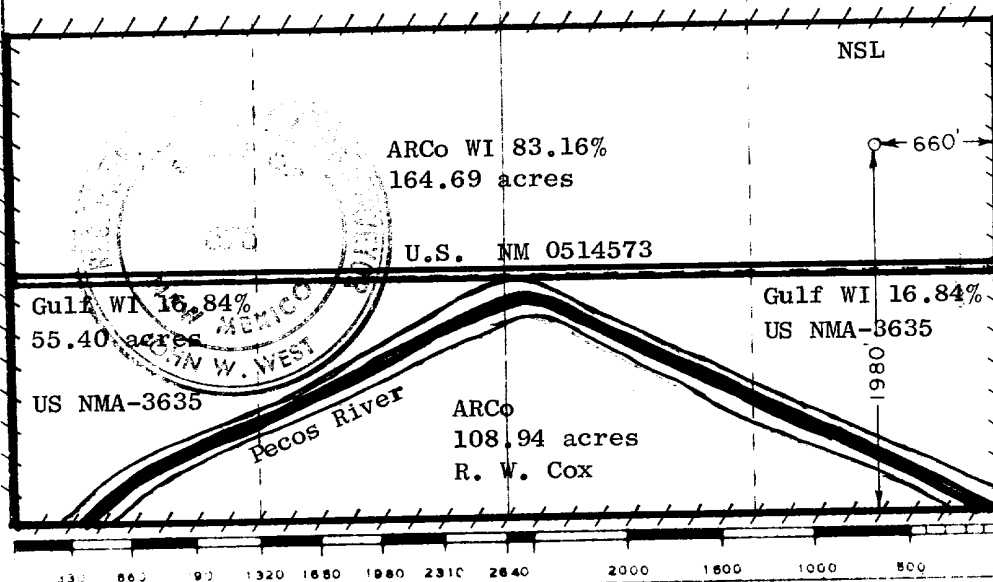
- Outline the acreage dedicated to the subject well by colored pencil or hatchure marks on the plat below.
- If more than one lease is dedicated to the well, outline each and identify the ownership thereof (both as to working interest and royalty).
- If more than one lease of different ownership is dedicated to the well, have the interests of all owners been consolidated by communitization, unitization, force-pooling, etc?

Yes ☒ No ☐ If answer is "yes," type of consolidation _____

If answer is "no," list the owners and tract descriptions which have actually been consolidated (Use reverse side of this form if necessary) _____

No allowable will be assigned to the well until all interests have been consolidated (by communitization, unitization, force-pooling, or otherwise) or until a non-standard unit, eliminating such interests, has been approved by the Commission.

Note: Location was staked on a 400' x 400' pad;
elevations of corners are:
NE corner 3211.7
NW corner 3210.7
SE corner 3214.0
SW corner 3218.0



CERTIFICATION

I hereby certify that the information contained herein is true and complete to the best of my knowledge and belief.

Dist. Dirg. Supt.

Atlantic Richfield Company

6/22/77

RECEIVED

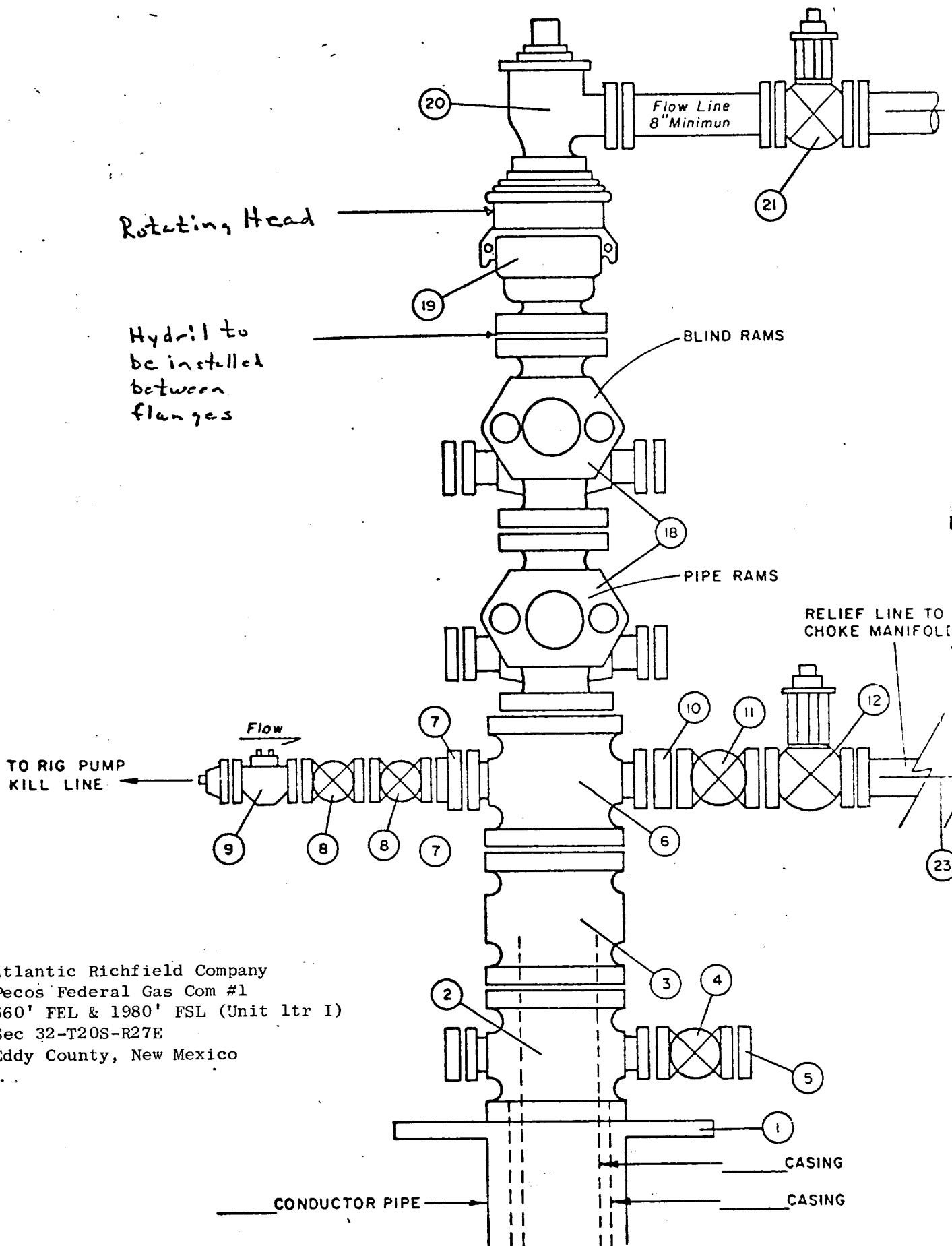
I hereby certify that the well location shown on this plat was plotted from field notes of actual surveys made by me or under my supervision, and that the same are true and correct to the best of my knowledge and belief.

U.S. GEOLOGICAL SURVEY
ARTESIA, NEW MEXICO

June 10, 1977

Responsible for the information contained on this plat.

John M. West
676



Atlantic Richfield Company
 Pecos Federal Gas Com #1
 660' FEL & 1980' FSL (Unit 1tr I)
 Sec 32-T20S-R27E
 Eddy County, New Mexico

To Supplement USGS Form 9-331C "Application for Permit to Drill, Deepen or Plugback", the following additional information is submitted to comply with NTL-6.

Operator: Atlantic Richfield Company
Lease & Well No: Pecos Federal Gas Com #1
Location: Unit Letter I, 660' FEL & 1980' FSL
Section 32-T20S-R27E, Eddy County, New Mexico

RECEIVED
JUN 24 1977
U.S. GEOLOGICAL SURVEY
ARTESIA, NEW MEXICO

1. See Form 9-331C for well location.
2. See Form 9-331C for elevation of well location.
3. The geologic name of the surface formation is:
Basil salt, top of transill
4. See Form 9-331C for proposed casing program.
5. The pressure control equipment installed on the 13-3/8" csg will have a working pressure of 3000 psig and will be tested to 2000 psig when installed and operated daily. The pressure control equipment installed on the 9-5/8" csg will have a working pressure of 5000 psig and will be tested to 2000 psig when installed and operated daily. Will perform yellowjacket pressure test and inspection when on trip for 3rd bit under 9-5/8" csg to 5000 psig. Copy of test to be furnished your office. See diagram of Blowout Preventer Program attached.
6. The type and characteristics of the proposed circulating medium or mediums to be employed for rotary drilling and quantities and types of mud and weighting material to be used will be as follows:

0 - 500'	Spud mud. Use fresh water and drill w/o returns if necessary.
500 - 2,100'	Use fresh water and drill w/o returns if necessary
2,100 - 8,000'	Use fresh water and LCM to control seepage.
8,000 - 10,200'	Use KCL brine w/viscosity high enough for good samples
10,200 - 11,000'	Use 4% KCL brine polymer, Vis 35, WL 6-10

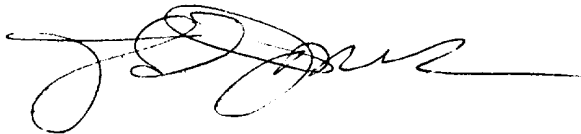
7. The auxiliary equipment to be used will consist of: Kelly cocks and a sub on floor with full opening valve to be used when needed. Mud logging with one man unit 8000' - TD.
8. The testing, logging and coring programs will be:
DLL-FDC 8000'-TD and GR-CNL 0-TD
One Drill Stem Test will be run on the Strawn and Atoka and two tests on the Morrow. No coring is proposed.
9. No abnormal pressures or temperatures are expected to be encountered nor any potentially hazardous H₂S.
10. The starting date will be approximately July 1, 1977 and will be completed approximately September 1, 1977.
11. See Form 9-331C for amount of cmt to be used on each string of csg. The cement for 13-3/8" OD surface csg will be C1 C cont'g 4% gel, 2% CaCl & 1/4# LCM/sk followed by C1 Cont'g 2% CaCl. The cement for 9-5/8" OD intermediate csg will be C1 C Thik-set cont'g 10# Gilsonite/sk, 1/2# flocele/sk, 2% CaCl followed by C1 C cont'g 2% CaCl. The cement for 5 1/2" prod csg will be C1 H cont'g 5# KCL/sk, .5% FLA & .3% CFR-2.

12. The estimated tops of important geologic markers are:
Delaware 2200', Bone Springs 4100', Wolfcamp 8100', Strawn 9500', Atoka
9800', Morrow 10,300', Mississippi 10,870'.

13. The anticipated water, oil, gas or other mineral bearing formations
expected to be encountered are:

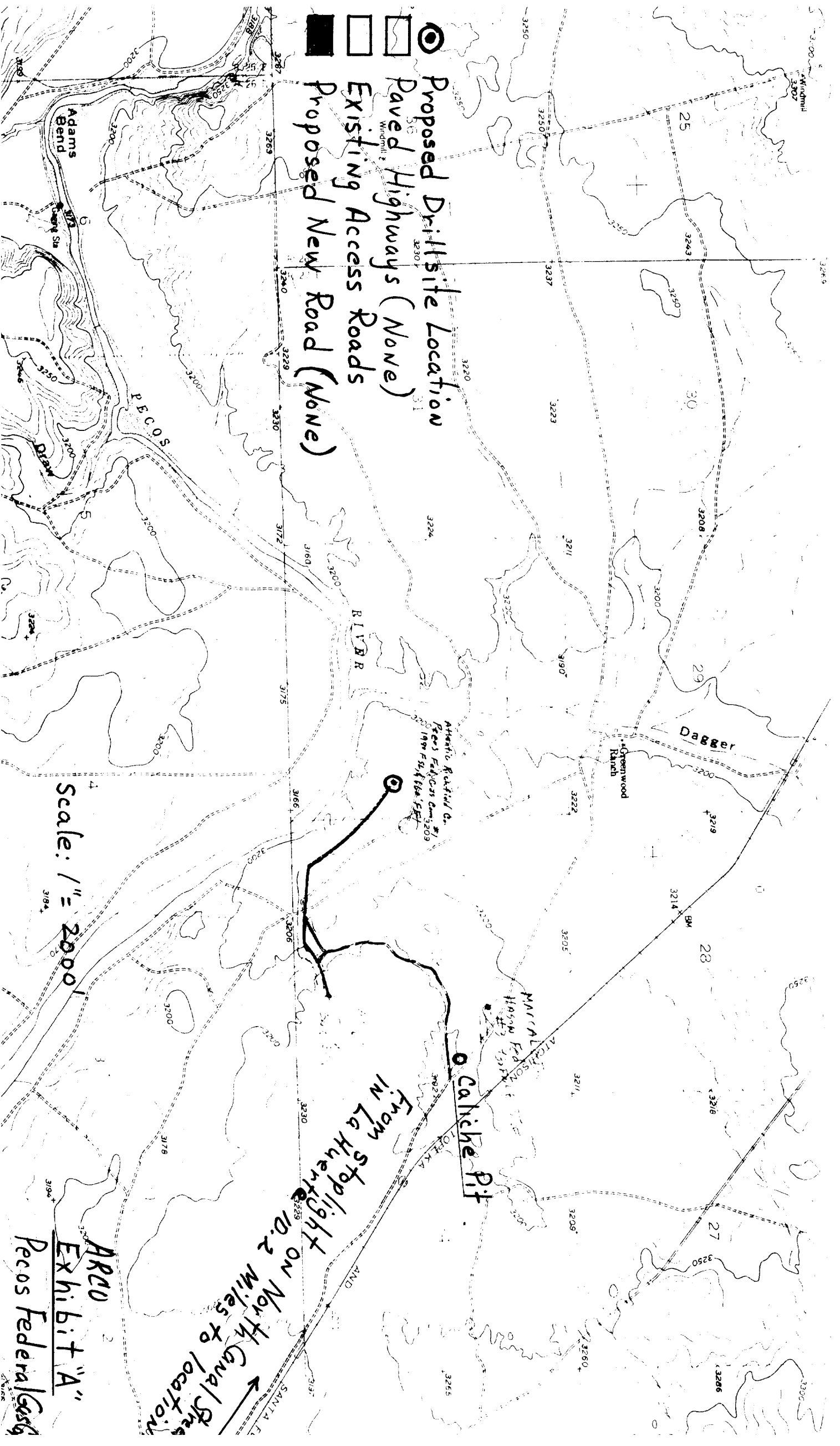
Fresh water formation	±	600'
Wolfcamp	±	8,100'
Strawn	±	9,500'
Atoka	±	9,800'
Morrow	±	10,300'
Mississippi	±	10,870'

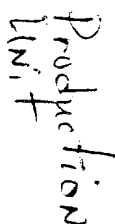
14. See Form 9-331C for proposed drilling depth.



RECEIVED
JUN 24 1977
U.S. GEOLOGICAL SURVEY
ARTESIA, NEW MEXICO

- Proposed Drillsite Location
- Paved Highways (None)
- Existing Access Roads
- Proposed New Road (None)





ALEXANDRIA

- 1 CONTRACTOR SHALL FURNISH, MAKE, CLAMP, AND ERECT GALVANIZED MILD-STEEL PIPE CORRODED, HOT-ROLLED SHEET PILE APPLIED AT AN APPROXIMATE RATE OF GALVANIZING 50 FT. IN AREA CUTLINE BY 3 AREA BETWEEN DISBURD LINE SHALL BE IDENTICAL WITH PILE.

ROOM 3000 OF BUILDING IN THE CITY OF CHICAGO

- BE A MINUTE OF IT NOT WITH CUBES AND
STRAITS TO ACCORDANCE LOADED TRUCKS
AND SHALL BE CORRELATED WITH "CUBES"
USING WATER AND DATA ON APPROX. ONE CU
FT = 30 FT.

- ATLANTIC SMALL TURNISH AT THE LOCAL, MONTICELLO, TEXAS JUDS AND POOL. CONTRACTOR SMALL INITIAL CATTLE, LANDOWNERS SPECIFICATIONS. IFRA CATTLE FOR ALL TURNING RAB. PARTICIPATED AND LINEAR MEASUREMENTS INCLUDE SUCH EXTRA CATTLE REQUIREMENTS.

4. DRILLING, HAT CONTAINS AN ESTIMATE

2. CONTRACTOR SHALL BE RESPONSIBLE FOR ALL ACTIVITIES INCLUDING PEST CONTROL, IF ANY.

Scale: 1" = 45'

[illegible]