

NEW MEXICO OIL CONSERVATION COMMISSION
WELL LOCATION AND ACREAGE DEDICATION PLAT

RECEIVED

Form C-117
Supersedes C-128
Effective 1-1-79

NOV 18 1980

All distances must be from the outer boundaries of the Section.

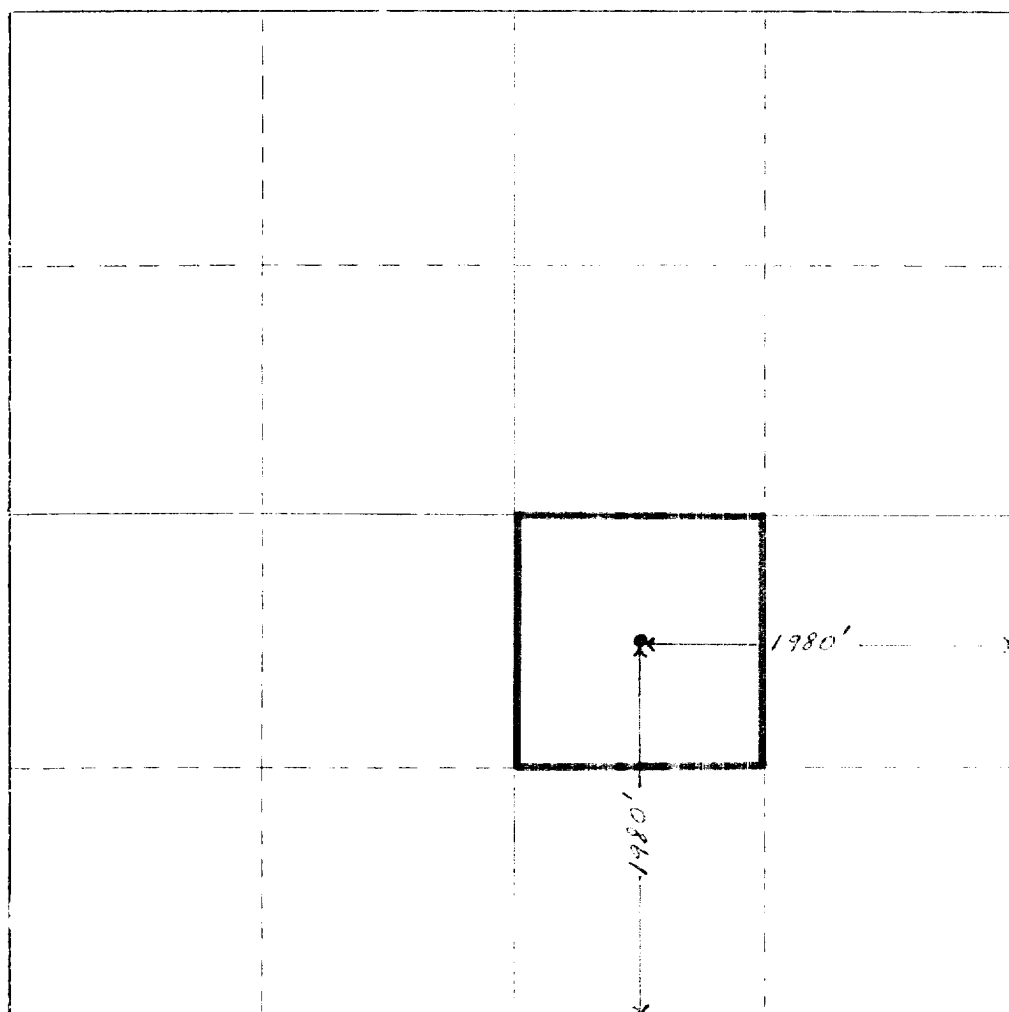
Name Perry R. Bass		Section Big Eddy Unit		Well No. 60	
Section Letter J	Section No. 20	Township 21 South	Range 28 East	County Eddy	
Well Location of Well:					
1980 feet from the South		1980 feet from the East		Bore	
Surface Elev. 3204.3	Producing Formation Bone Spring	Fenton		Dedicated Acreage 40 Acres	

1. Outline the acreage dedicated to the subject well by colored pencil or hatchure marks on the plat below.
2. If more than one lease is dedicated to the well, outline each and identify the ownership thereof (both as to working interest and royalty).
3. If more than one lease of different ownership is dedicated to the well, have the interests of all owners been consolidated by communitization, unitization, force-pooling, etc?

☒ Yes ☐ No If answer is "yes," type of consolidation Unitization

If answer is "no," list the owners and their descriptions which have actually been consolidated. (Use reverse side of this form if necessary.)

No allowable will be assigned to the well until all interests have been consolidated (by communitization, unitization, forced-pooling, or otherwise) or until a non-standard unit, eliminating such interests, has been approved by the Commission.



CERTIFICATION

I hereby certify that the information contained herein is true and complete to the best of my knowledge and belief.

H. F. Wurtz, Jr.
Name **H. F. Wurtz, Jr.**

Position **Senior Production Clerk**

Signature **Perry R. Bass**

Date **November 17, 1980**

I hereby certify that the well location shown on this plat was plotted from field notes of actual surveys made by me or under my supervision, and that the same is true and correct to the best of my knowledge and belief.

Date Surveyed

Signature of Surveyor and Engineer
Not a Surveyor yet

Certification

300 600 900 1200 1500 1800 2100 2400 2700 3000 3300 3600