

NO. OF COPIES RECEIVED	6
DISTRIBUTION	
SANTA FE	1
FILE	1
U.S.G.S.	2
LAND OFFICE	1
OPERATOR	1

RECEIVED
NEW MEXICO OIL CONSERVATION COMMISSION
MAR 10 1978

O.C.C.
ARTESIA, OFFICE

30-015-22449

Form C-101
Revised 1-1-65

5A. Indicate Type of Lease	
STATE <input checked="" type="checkbox"/>	FEE <input type="checkbox"/>
5. State Oil & Gas Lease No.	
L-4995	

APPLICATION FOR PERMIT TO DRILL, DEEPEN, OR PLUG BACK

1a. Type of Work		7. Unit Agreement Name	
b. Type of Well DRILL <input checked="" type="checkbox"/> DEEPEN <input type="checkbox"/> PLUG BACK <input type="checkbox"/> OIL WELL <input type="checkbox"/> GAS WELL <input checked="" type="checkbox"/> OTHER <input type="checkbox"/> SINGLE ZONE <input checked="" type="checkbox"/> MULTIPLE ZONE <input type="checkbox"/>		8. Farm or Lease Name Cities "JH" State	
2. Name of Operator Yates Petroleum Corporation		9. Well No. 1	
3. Address of Operator 207 South Fourth Street - Artesia, NM 88210		10. Field and Pool, or Wildcat Wildcat 7/25/70	
4. Location of Well UNIT LETTER E LOCATED 2205' FEET FROM THE North LINE AND 660' FEET FROM THE West LINE OF SEC. 36 TWP. 21S RGE. 21E NMPM		12. County Eddy	
19. Proposed Depth 9200'		19A. Formation Morrow	
20. Rotary or C.T. Rotary		21. Elevations (Show whether DT, RT, etc.) 4612' GR	
21A. Kind & Status Plug. Bond Blanket		21B. Drilling Contractor Capitan Drilling	
22. Approx. Date Work will start Approx. -3-15-78			

PROPOSED CASING AND CEMENT PROGRAM

SIZE OF HOLE	SIZE OF CASING	WEIGHT PER FOOT	SETTING DEPTH	SACKS OF CEMENT	EST. TOP
17-1/2"	13-3/8"	48#	Approx 160'	150 sacks	circulate
12-1/4"	8-5/8"	24#	" 1600'	800 sacks	circulate
7-7/8"	5 1/2 or 4 1/2"	17# K-55, N-80 10.5-11.6#	" 9200'	250 sacks	

K-55

It is proposed to drill and test the Morrow and intermediate formations. Will run approx. 160' of surface casing to shut off fractured rock and cavings, and approx. 1600' of intermediate casing to get below all possible porosity. If commercial pay is encountered, will run 5 1/2" or 4 1/2" casing, perforate and stimulate as needed for production.

Mud Program: FW gel to 1600, water to 6000', starch-driskak-KCL to 8200', Flosal-Driskak-KCL mud to TD.

BOP Program: BOP's on 8-5/8" casing and tested, pipe rams tested 90 days, UNLESS Yellow Jacket BOP (hydril included) before drilling commences, Gas acreage not dedicated.

APPROVAL VALID

EXPIRES 6-13-78

IN ABOVE SPACE DESCRIBE PROPOSED PROGRAM; IF PROPOSAL IS TO DEEPEN OR PLUG BACK, GIVE DATA ON PRESENT PRODUCTIVE ZONE AND PROPOSED NEW PRODUCTIVE ZONE. GIVE BLOWOUT PREVENTER PROGRAM, IF ANY.

I hereby certify that the information above is true and complete to the best of my knowledge and belief.

Signed Christina Tomlinson Title Geological Secretary Date 3-10-78

(This space for State Use)

APPROVED BY W.A. Gussert TITLE SUPERVISOR, DISTRICT II DATE MAR 13 1978

CONDITIONS OF APPROVAL, IF ANY:

Cement must be circulated to surface behind 13 3/8" + 8 5/8" casing

Notify N.M.O.C.C. in sufficient time to witness cementing the 8 7/8" casing

NEW MEXICO OIL CONSERVATION COMMISSION
WELL LOCATION AND ACREAGE DEDICATION PLAT

Form C-102
Supersedes C-128
Effective 1-1-65

All distances must be from the outer boundaries of the Section.

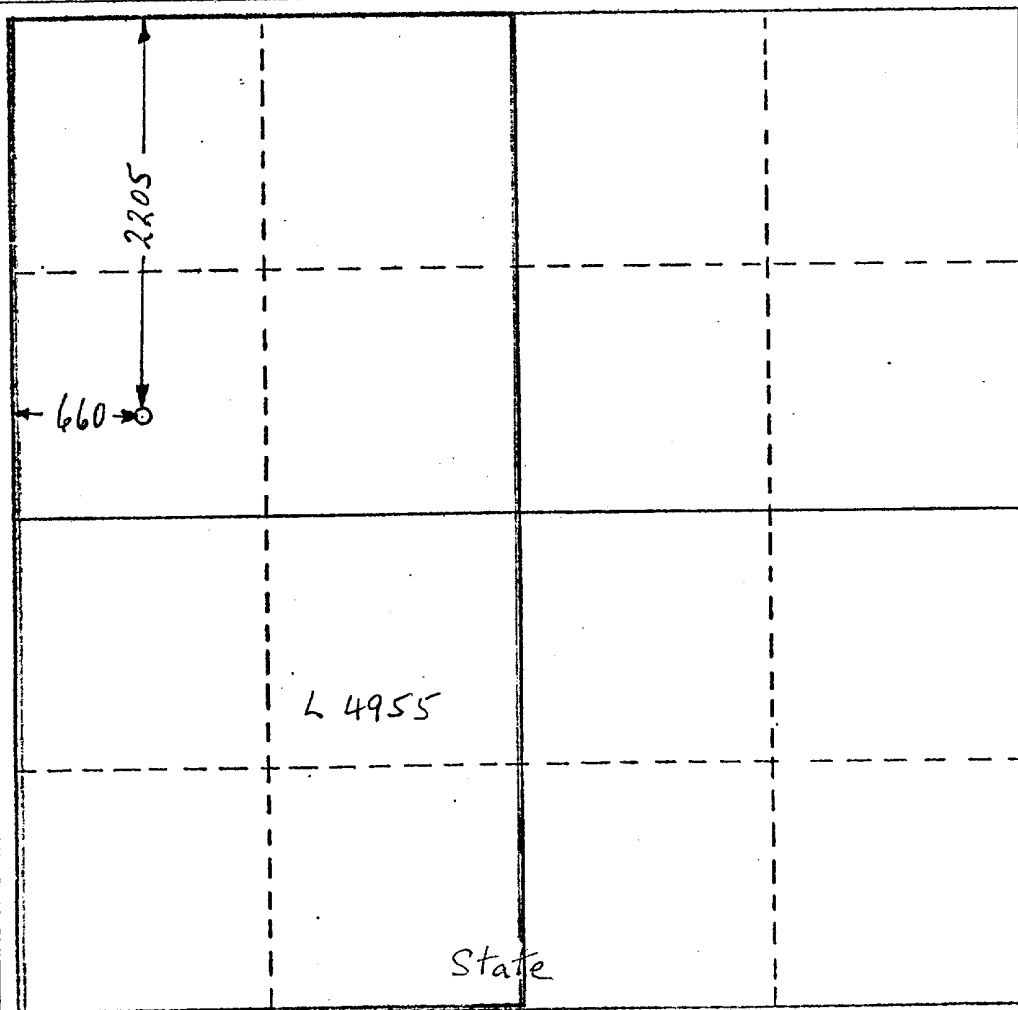
Operator Yates Petroleum Corp		Lease Cities JH State		Well No. 1	
Unit Letter E	Section 36	Township 21-S	Range 21-E	County Eddy	
Actual Footage Location of Well: 2205 feet from the North line and 660 feet from the West line					
Ground Level Elev. 4612	Producing Formation Morrow	Pool Wildcat Morrow	Dedicated Acreage: 320 Acres		

1. Outline the acreage dedicated to the subject well by colored pencil or hachure marks on the plat below.
2. If more than one lease is dedicated to the well, outline each and identify the ownership thereof (both as to working interest and royalty).
3. If more than one lease of different ownership is dedicated to the well, have the interests of all owners been consolidated by communitization, unitization, force-pooling, etc?

☐ Yes ☐ No If answer is "yes," type of consolidation _____

If answer is "no," list the owners and tract descriptions which have actually been consolidated. (Use reverse side of this form if necessary.) _____

No allowable will be assigned to the well until all interests have been consolidated (by communitization, unitization, forced-pooling, or otherwise) or until a non-standard unit, eliminating such interests, has been approved by the Commission.



CERTIFICATION

I hereby certify that the information contained herein is true and complete to the best of my knowledge and belief.

Eddie M. Mahfood

Name

Eddie M. Mahfood

Position

ENGINEER

Company

YATES PETROLEUM CORP

Date

3-10-78

I hereby certify that the well location shown on this plat was plotted from field notes of B. B. F. Dwyer made by me or under my supervision, and that the same is true and correct to the best of my knowledge and belief.

B. B. F. Dwyer
5412
REGISTERED PROFESSIONAL ENGINEER
AND LAND SURVEYOR

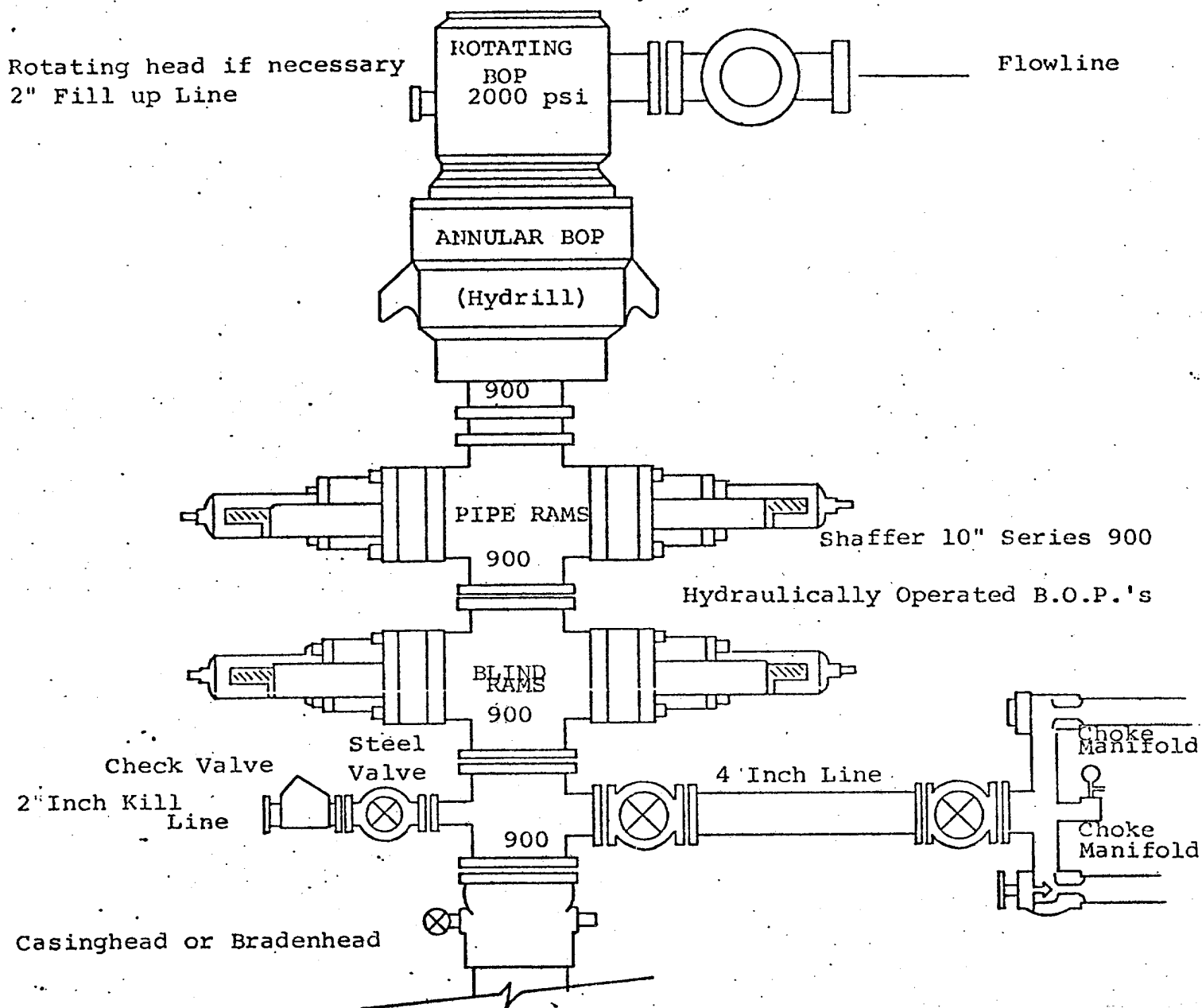
Registered Professional Engineer and/or Land Surveyor

Dan R. Reddy

Certificate No.

PFELS #5412

0 330 660 990 1320 1650 1980 2310 2640 2000 1500 1000 500 0



THE FOLLOWING CONSTITUTE MINIMUM BLOWOUT PREVENTER REQUIREMENTS

1. All preventers to be hydraulically operated with secondary manual controls installed prior to drilling out from under casing.
2. Choke outlet to be a minimum of 4" diameter.
3. Kill line to be of all steel construction of 2" minimum diameter.
4. All connections from operating manifolds to preventers to be all steel. hole or tube a minimum of one inch in diameter.
5. The available closing pressure shall be at least 15% in excess of that required with sufficient volume to operate the B.O.P.'s.
6. All connections to and from preventer to have a pressure rating equivalent to that of the B.O.P.'s.
7. Inside blowout preventer to be available on rig floor.
8. Operating controls located a safe distance from the rig floor.
9. Hole must be kept filled on trips below intermediate casing. Operator not responsible for blowouts resulting from not keeping hole full.
10. D. P. float must be installed and used below zone of first gas intrusion.