

**NEW MEXICO OIL CONSERVATION COMMISSION
WELL LOCATION AND ACREAGE DEDICATION PLAT**

Form C-102
Supersedes C-128
Effective 1-1-65

All distances must be from the outer boundaries of the Section

| | | | | | |
|------------------------------------|-----------------------------|-------------------------|---|--|----------------------|
| Owner Boyd Operating Co. | | | Lease XXXX Federal Murphy Fed. | | Well No. 1 |
| Section 12 | Township 20 South | Range 27 East | County Eddy | | |

Approximate Location of Wells:
660 feet from the **South** line and **1980** feet from the **East** line

| | | | |
|------------------------------------|--------------------------------------|---|-------------------------------------|
| Ground Level Elev 3315.9 | Producing Formation Morrow | Pool W. Benton Flat moraine E. McMillan | Dedicated Acreage 360-320 |
|------------------------------------|--------------------------------------|---|-------------------------------------|

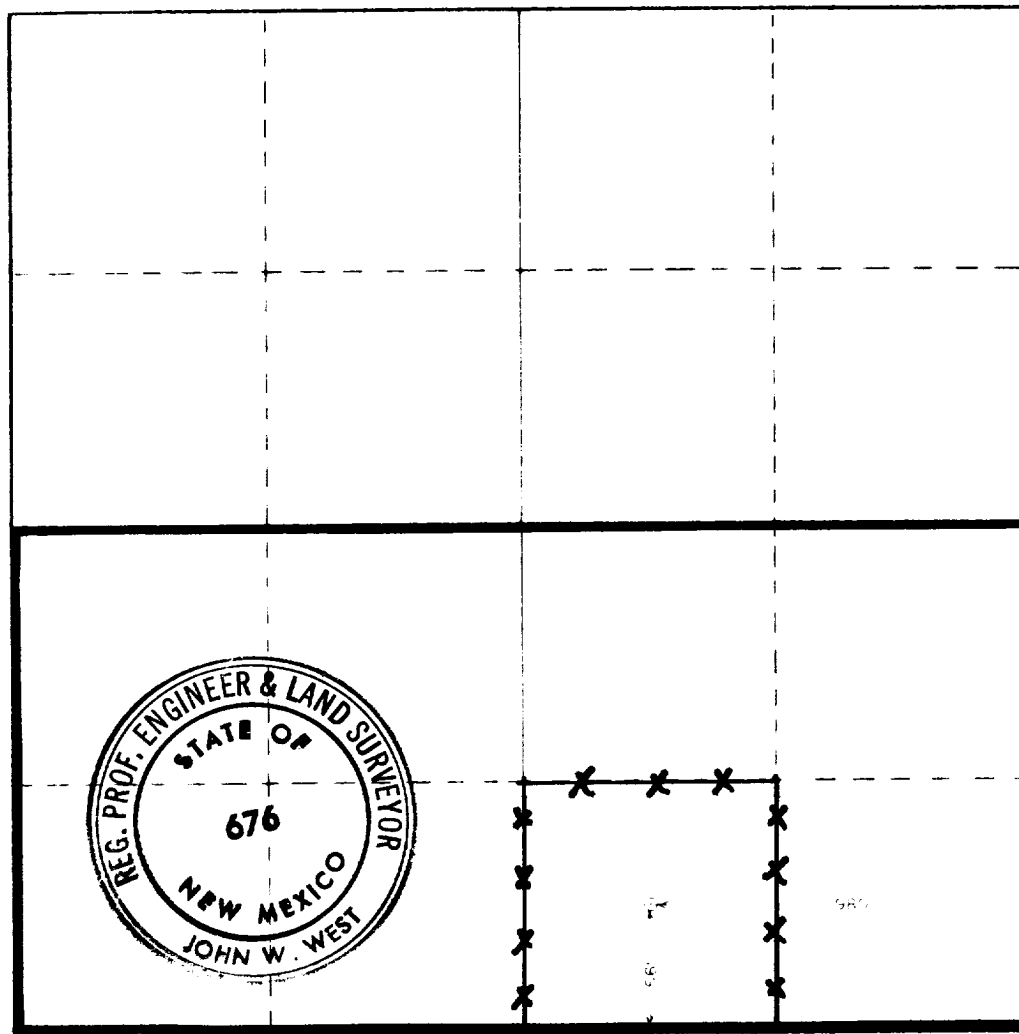
1. Outline the acreage dedicated to the subject well by colored pencil or hachure marks on the plat below.
2. If more than one lease is dedicated to the well, outline each and identify the ownership thereof (as to working interest and royalty).
3. If more than one lease of different ownership is dedicated to the well, have the interests of all owners been consolidated by communitization, unitization, force-pooling, etc?

☐ Yes ☐ No If answer is "yes," type of consolidation _____

If answer is "no," list the owners and tract descriptions which have actually been consolidated. (Use reverse side of this form if necessary.) _____

No allowable will be assigned to the well until all interests have been consolidated (by communitization, unitization, forced-pooling, or otherwise) or until a non-standard unit, eliminating such interests, has been approved by the Commission.

RECEIVED
DEC 22 1978
U.S. GEOLOGICAL SURVEY
ARTESIA, NEW MEXICO



CERTIFICATION

I hereby certify that the information contained herein is true and complete to the best of my knowledge and belief.

William N. Morgan
Name

William N. Morgan

Position

Consultant

Company

Boyd Operating Co.

Date

12-21-78

I hereby certify that the well location shown on this plat was plotted from field notes of actual surveys made by me or under my supervision, and that the same is true and correct to the best of my knowledge and belief.

Date Surveyed

December 15, 1978

Registered Professional Engineer and/or Land Surveyor

John W. West

Certificate No. **John W. West**

676

Ronald J. Eidson

3239

0 330 660 990 1320 1650 1980 2310 2640 2970 3300 3630 3960 4290 4620 4950 5280 5610 5940 6270 6600