

MOCC COPY
UNITED STATES
DEPARTMENT OF THE INTERIOR
GEOLOGICAL SURVEY

Form 100-10 (Rev. 1-64)
(Other instructions on reverse side)

copy to DV
B.G. & Co. No. 42 11425.

30-015-22782

APPLICATION FOR PERMIT TO DRILL, DEEPEN, OR PLUG BACK

1. TYPE OF WORK

DRILL ☒

PLUG BACK ☐

2. TYPE OF WELL

Oil ☐

Gas ☒

OTHER ☐

SINGLE ZONE ☒

MULTIPLE ZONE ☐

3. NAME OF OPERATOR

Morris R. Antweil

4. ADDRESS OF OPERATOR

P.O. Box 2010, Hobbs, N.M. 88240

5. LOCATION OF WELL (Report location clearly and in accordance with any State requirements.)

At surface

660' FSL & 1650' FWL

At proposed prod. zone

same

6. DISTANCE IN MILES AND DIRECTION FROM NEAREST TOWN OR POST OFFICE*

O. C. C.
ARTESIA, OFFICE

7. DISTANCE FROM PROPOSED*

LOCATION TO NEAREST
PROPERTY OR LEASE LINE, FT.
(Also to nearest drig. unit line, if any)

660'

8. NO. OF ACRES IN LEASE

2395.37

9. NO. OF ACRES ASSIGNED
TO THIS WELL

320

10. DISTANCE FROM PROPOSED LOCATION*
TO NEAREST WELL, DRILLING, COMPLETED,
OR APPLIED FOR, ON THIS LEASE, FT.

11. PROPOSED DEPTH

8,200

12. ROTARY OR CABLE TOOLS

Rotary

13. ELEVATIONS (Show whether DF, RT, GR, etc.)

3853.5 GR

14. APPROX. DATE WORK WILL START*

January 20, 1979

23. PROPOSED CASING AND CEMENTING PROGRAM

SIZE OF HOLE	SIZE OF CASING	WEIGHT PER FOOT	SETTING DEPTH	QUANTITY OF CEMENT
17 1/2"	13 3/8"	48#	200'	250 sx.
12 1/4"	8 5/8"	32#	1600'	750 sx. Circulated
7 7/8"	5 1/2"	17#	8200'	225 sx.

1. Drill to 200' set and cement 13 3/8" casing; install blowout preventor.
2. Drill to approximately 1600', set and cement 8 5/8" casing.
3. Drill to approximately 8,200', run open hole logs and possible one or more drill stem tests, set and cement 5 1/2" casing to cover productive zones.

-Geologic formation at surface is Yates. Estimated tops are: Bone Springs Sand 1700', Bone Springs lime 3700', 3rd Bone Springs Sand 7350' Wolfcamp Shale 7500', Cisco Reef 7830'.

-Circulating Medium: Surface to 7000'-fresh water with paper used to assist in maintaining circulation. Mud up at aprox. 7000' with 8.7#-8.8#, viscosity 36-38, water loss 10cc or less.

Gas not dedicated

IN ABOVE SPACE DESCRIBE PROPOSED PROGRAM: If proposal is to deepen or plug back, give data on present productive zone and proposed new productive zone. If proposal is to drill or deepen directionally, give pertinent data on subsurface locations and measured and true vertical depths. Give blowout preventer program, if any.

24.

SIGNED

TITLE Agent

DATE 12-8-78

(This space for Federal or State office use)

PERMIT NO.

APPROVAL DATE

1-9-79

APPROVED BY

TITLE

DATE

CONDITIONS OF APPROVAL, IF ANY:

*See Instructions On Reverse Side



NMOCC COPY

United States Department of the Interior

GEOLOGICAL SURVEY
P. O. Drawer U
Artesia, New Mexico 88210

RECEIVED

JAN 11 1979

O. C. C.
ARTESIA, OFFICE

January 9, 1979

Morris R. Antweil
P. O. Box 2010
Hobbs, New Mexico 88240

MORRIS R. ANTWEIL
M-H Federal Com. No. 1
660 FSL 1650 FWL Sec. 1, T22S, R24E
Eddy County Lease No. NM-8665

Gentlemen:

Above Data Required on Well Sign

Your APPLICATION FOR PERMIT TO DRILL the above-described well to a depth of 8,200 feet to test the Upper Pennsylvanian is hereby approved subject to New Mexico Oil Conservation Division approval of the nonstandard well location, compliance with the OIL AND GAS OPERATING REGULATIONS (30 CFR 221), and the following conditions:

1. Drilling operations authorized are subject to compliance with the attached General Requirements for Oil and Gas Operations on Federal Leases, dated July 1, 1978.
2. Prior to commencing construction of road, pad, or other associated developments, operator will provide the dirt contractor with a copy of the Surface Use Plan and these Conditions of Approval including the attached General Requirements.
3. Submit a Daily Report of Operations from spud date until the well is completed and the Well Completion Report (form 9-330) is filed. The report should be not less than 8" x 5" in size and each page should identify the well.
4. All permanent above-ground structures and equipment shall be painted inaccordance with the attached Painting Guidelines. The color used should simulate sandstone brown (Federal Standard Color No. 595A, color 20318 or 30318).
5. Before drilling below the 8-5/8" casing, the blowout preventer assembly will consist of a minimum of one annular type and two ram type preventers.
6. A kelly cock will be installed and maintained in operable condition.
7. After setting the 8-5/8" casing string and before drilling into the Wolfcamp formation, the blowout preventers and related control equipment shall be pressure tested to rated working pressures by an independent service company. Any equipment failing to test satisfactorily shall be repaired or replaced. This office should be notified in sufficient time for a representative to witness the tests and shall be furnished a copy of the pressure test report.

8. Mud system monitoring equipment, with derrick floor indicators and visual and audio alarms, shall be installed and operating before drilling into the Wolfcamp formation and used until production casing is run and cemented. Monitoring equipment shall consist of the following:
 - (1) A recording pit level indicator to determine pit volume gains and losses.
 - (2) A mud volume measuring device for accurately determining mud volume necessary to fill the hole on trips.
 - (3) A flow sensor on the flow-line to warn of any abnormal mud returns from the well.
9. Notify the Survey in sufficient time to witness the cementing of the 8-5/8" casing.
10. Cement behind the 13-3/8" and 8-5/8" casing must be circulated.
11. Please note the special stipulation concerning the proposed access road which is given as item No. 13 of the attached standard surface use stipulations.

Sincerely yours,

(Orig. Sgd.) ALBERT R. STALL

Albert R. Stall
Acting District Engineer

WELL LOCATION AND ACREAGE DEDICATION PLAT

U.S. GEOLOGICAL SURVEY
ED-50 (Rev. 11-61)

All dimensions must be from the outer boundaries of the Section.

Owner Morris R. Antweil		Lease M-H Federal Com		Well No. 1	
Section 1	Township 22 South	Range 24 East	County Eddy		
Actual Well Location of Well:					
1650	feet from the West	line and 660	feet from the South	line	
2353.5	Upper Penn	McKittrick Hills Up. Penn	320	feet from the Artesia	

- Outline the acreage dedicated to the subject well by colored pencil or hatchure marks on this plat.
- If more than one lease is dedicated to the well, outline each and identify the ownership thereof (both as to working interest and royalty).
- If more than one lease of different ownership is dedicated to the well, have the interests consolidated by communitization, unitization, force-pooling, etc?

RECEIVED

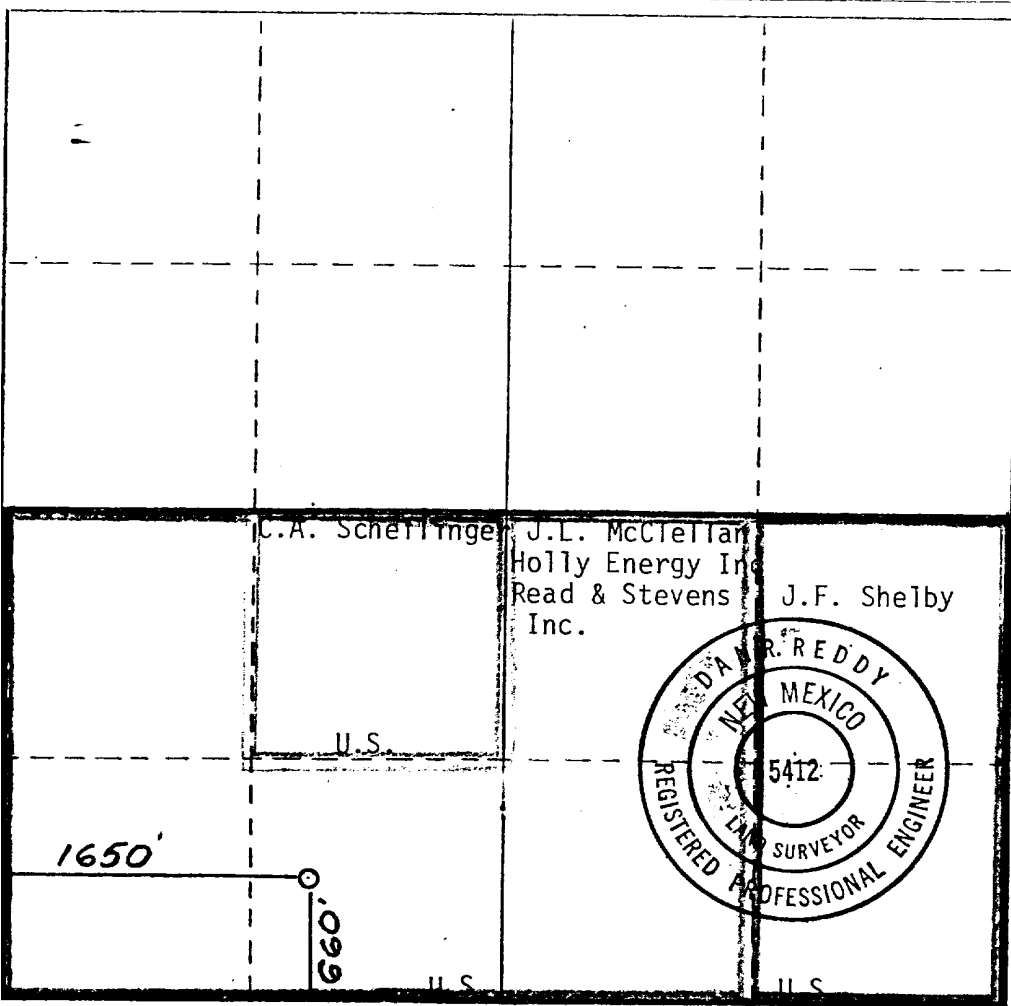
DEC 15 1978

**U.S. GEOLOGICAL SURVEY
ARTESIA, NEW MEXICO**

☒ Yes ☐ No If answer is "yes," type of consolidation Communitization

If answer is "no," list the owners and tract descriptions which have actually been consolidated. (Use reverse side of this form if necessary.)

No allowable will be assigned to the well until all interests have been consolidated (by communitization, unitization, forced-pooling, or otherwise) or until a non-standard unit, eliminating such interests, has been approved by the Commission.



CERTIFICATION

I hereby certify that the information contained herein is true and complete to the best of my knowledge and belief.

Name Carl A. Schellinger

Position

Agent

Company

Morris R. Antweil

Date

December 8, 1978

I hereby certify that the well location shown on this plat was plotted from field notes of actual surveys made by me or under my supervision, and that the same is true and correct to the best of my knowledge and belief.

Date Surveyed

12/2/78

Registered Professional Engineer and/or Land Surveyor

Dan R. Reddy

Certificate No.

NM PE&LS #5412

330 660 990 1320 1650 1980 2310 2640 2970 3300 3630 3960 4290 4620 4950 5280 5610 5940 6270 6600

SURFACE USE
AND OPERATIONS PLAN

RECEIVED
DEC 15 1978
U.S. GEOLOGICAL SURVEY
ARTESIA, NEW MEXICO

Well Name: M-H Federal Com No. 1

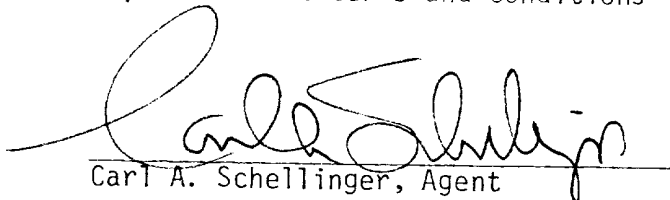
Location: Section 1, T-22-S, R-24-E, N.M.P.M., Unit N, Eddy County, New Mexico

1. Existing roads: Shown on attached plat.
2. Planned Access Road: Approximately 2400' of bladed road 12' wide topped with caliche. Road material to be purchased from surface owner. (Road noted on attached plat.)
3. Location of Existing wells: Shown on attached plat.
4. Location of Tank Batteries & Production Facilities: If production is established, tank battery and production equipment will be located at the south edge of well pad.
5. Water Supply: Water to be trucked from nearest commercial source.
6. Source of Construction Materials: Caliche pit located $1\frac{1}{4}$ miles southwest in the SE $\frac{1}{4}$ SE $\frac{1}{4}$ Section 11, T-22-S, R-24-E.
7. Method of Handling Waste Disposal: Well cuttings will be disposed of in reserve pit. All detrimental waste will be hauled away or buried at a minimum of 24" below surface.
8. Ancillary Facilities: None required.
9. Well site layout: See attached plat.
10. Plans for restoration of surface: If well is productive, pits will be backfilled and leveled as soon as practical. Upon final abandonment of well, well site will be leveled and returned as near as practical to original contour and condition.
11. Other Information: Surface is gravelly, fine, sandy loam with indurated fractured caliche. Vegetation at drillsite is mesquite, native grass and greasewood.
12. Operator's Representative: R.M. Williams Phone: (505) 393-4111
P.O. Box 2010
Hobbs, NM 88240

13. Certification:

I hereby that I, or persons under my direct supervision, have inspected the proposed drillsite and access route; that I am familiar with the conditions which presently exist; that the statements made in this plan are, to the best of my knowledge, true and correct; and that the work associated with the operations proposed herein will be performed by Morris R. Antweil, his contractors and sub-contractors in conformity with this plan and the terms and conditions under which it is approved.

December 8, 1978
Date


Carl A. Schellinger, Agent

U.S.
INTERIOR
SURVEY

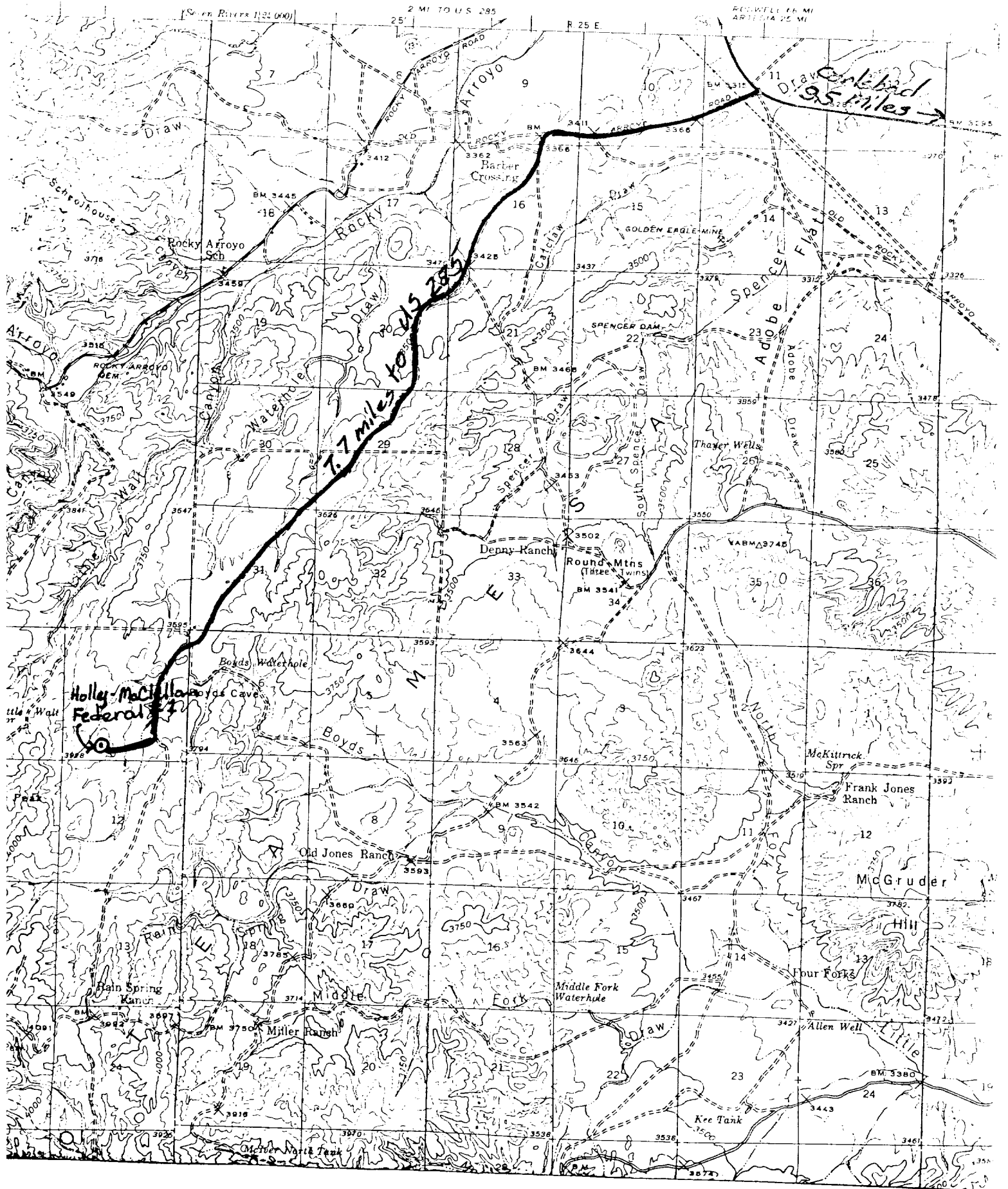


Exhibit A

M-H Federal Com. No. 1
1650' FWL
660' FSL
Section 1
Township 22 South
Range 24 East

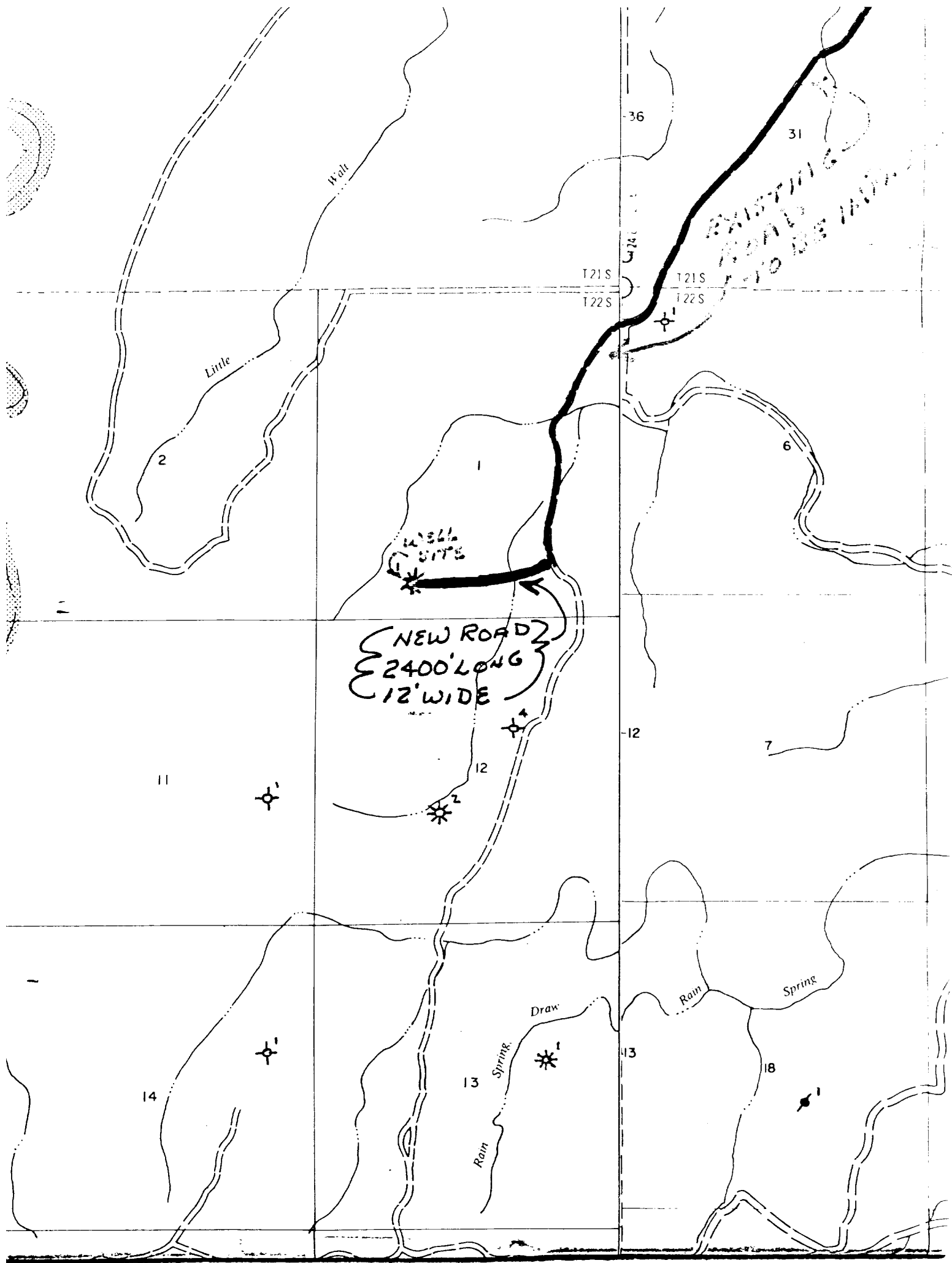


Exhibit B

M-H Federal Com. No. 1
 1650' FWL
 660' FSL
 Section 1
 Township 22 South
 Range 24 East

DRAWWORKS

Brewster N-55.

Drum: 1-1/8" Lebus grooved

Compound: 2-engine oil bath chain drive

Brake: Hydromatic Parkersburg 40" Single

ENGINES

Two 410-H.P. D353TA Caterpillar Diesel.

DERRICK

Lee C. Moore, 131', 550,000 lb. nominal capacity.

SUBSTRUCTURE

Lee C. Moore, 10' high, 550,000 lb. nominal capacity.

MUD PUMPS

Pump No. 1: Emsco DB550. 550 H.P. with steel fluid end. 4 3/4" - 7 3/4" liners, 16" stroke. Compound-driven.

Pump No. 2: D-375 Emsco driven by D353 Caterpillar.

DRILL STRING

3000' 4 1/2" Grade E, 20 lb.

Tool Joints: 4 1/2" H-90, 6 1/4" OD,

11000' 4" Grade E, 14.00 lb.

Tool Joints: 3 1/2" H-90, 5" OD

Thirty Drilco spiral-grooved 6 1/2" OD, 2 1/4" ID' With 4" H-90 Joints.

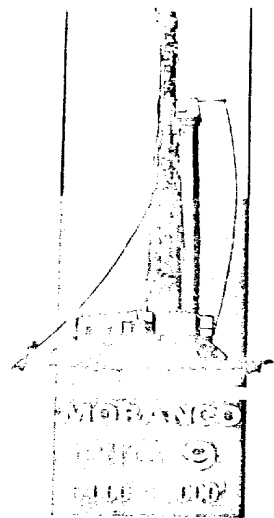
Other sized drillpipe & drillcollars available.

BLOWOUT PREVENTERS

- One Shaffer LWS hydraulic double 10" x 900 series. One Hydril 10" x 900 series. Choke manifold 4" x 900 series flanged connections. Payne 4 valve accumulator closing unit.

MUD SYSTEM

3 - 10' wide steel pits, with 660 Bbl. capacity. Complete low pressure circulating system, consisting of four submerged mud guns and two counter sunk jets in each pit. System utilizes a 6 x 8 centrifugal pump, powered by diesel.



MUD HOUSE

One - 8' x 30' Steel Storage House.

COMMUNICATIONS

24-Hour direct telephone interconnection through Hobbs (A.C. 505-397-3291) or Midland - Odessa (A.C. 915-563-0562).

OTHER EQUIPMENT

BLOCKS - McKissick 350 Ton

HOOK - BJ4200 300 Ton

SWIVEL - NAT N47 200 Ton

LIGHT PLANTS - two 15 KW AC generators, powered by diesel engines.

LIGHTS - AC fluorescent or mercury - All vapor proof.

SHALE SHAKER - Link belt, single screen.

FRESH WATER STORAGE - two 500 Bbl., horizontal tanks.

HOUSING - 1 - 8' x 36' airconditioned trailer house, with sleeping and cooking facilities.

