

MEXICO OIL CONSERVATION COMMISSION
WELL LOCATION AND ACREAGE DEDICATION PLAT

Form C-102
Supersedes C-128
Effective 1-4-65

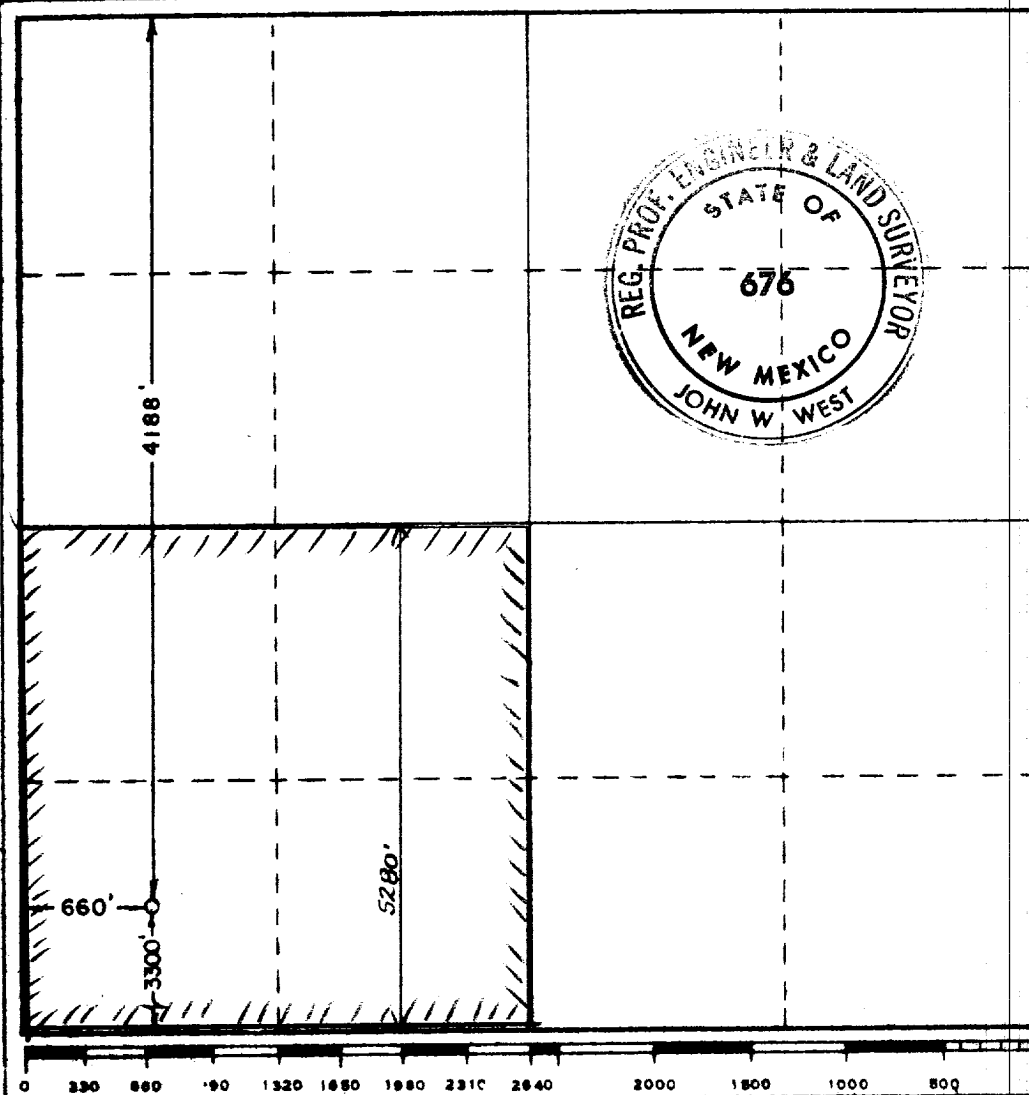
All distances must be from the outer boundaries of the Section

Operator Pogo Producing Co.		Lease		State		Well No. 1	
Unit Letter M	Section 13	Township 2	Range 21 South	County 28 East	Eddy		
Actual Footage Location of Well: 3300 feet from the South line and 660 feet from the West line							
Ground Level Elev. 3318.8	Producing Formation Morrow		Pool Undesignated Morrow		Dedicated Acreage: 320 Acres		

- Outline the acreage dedicated to the subject well by colored pencil or hatchure marks on the plat below.
 - If more than one lease is dedicated to the well, outline each and identify the ownership thereof (both as to working interest and royalty).
 - If more than one lease of different ownership is dedicated to the well, have the interests of all owners been consolidated by communitization, unitization, force-pooling, etc?
- RECEIVED**
DEC 12 1979
O. C. C.
ARTESIA, OFFICE
- ☐ Yes ☐ No If answer is "yes," type of consolidation _____

If answer is "no," list the owners and tract descriptions which have actually been consolidated. (Use reverse side of this form if necessary.) _____

No allowable will be assigned to the well until all interests have been consolidated (by communitization, unitization, forced-pooling, or otherwise) or until a non-standard unit, eliminating such interests, has been approved by the Commission.



CERTIFICATION

I hereby certify that the information contained herein is true and complete to the best of my knowledge and belief.

[Signature]
Name
Div. Operations Manager
Position
Pogo Producing Company
Company
December 10, 1979
Date

I hereby certify that the well location shown on this plat was plotted from field notes of actual surveys made by me or under my supervision, and that the same is true and correct to the best of my knowledge and belief.

Date Surveyed
Dec. 7, 1979
Registered Professional Engineer
and/or Land Surveyor

[Signature]
Certificate No. **John W. West 676**
Ronald J. Eidson 3239