

N. MEXICO OIL CONSERVATION COMMISS
WELL LOCATION AND ACREAGE DEDICATION PLAT

Form C-102
Supersedes C-128
Effective 1-1-65

All distances must be from the outer boundaries of the Section

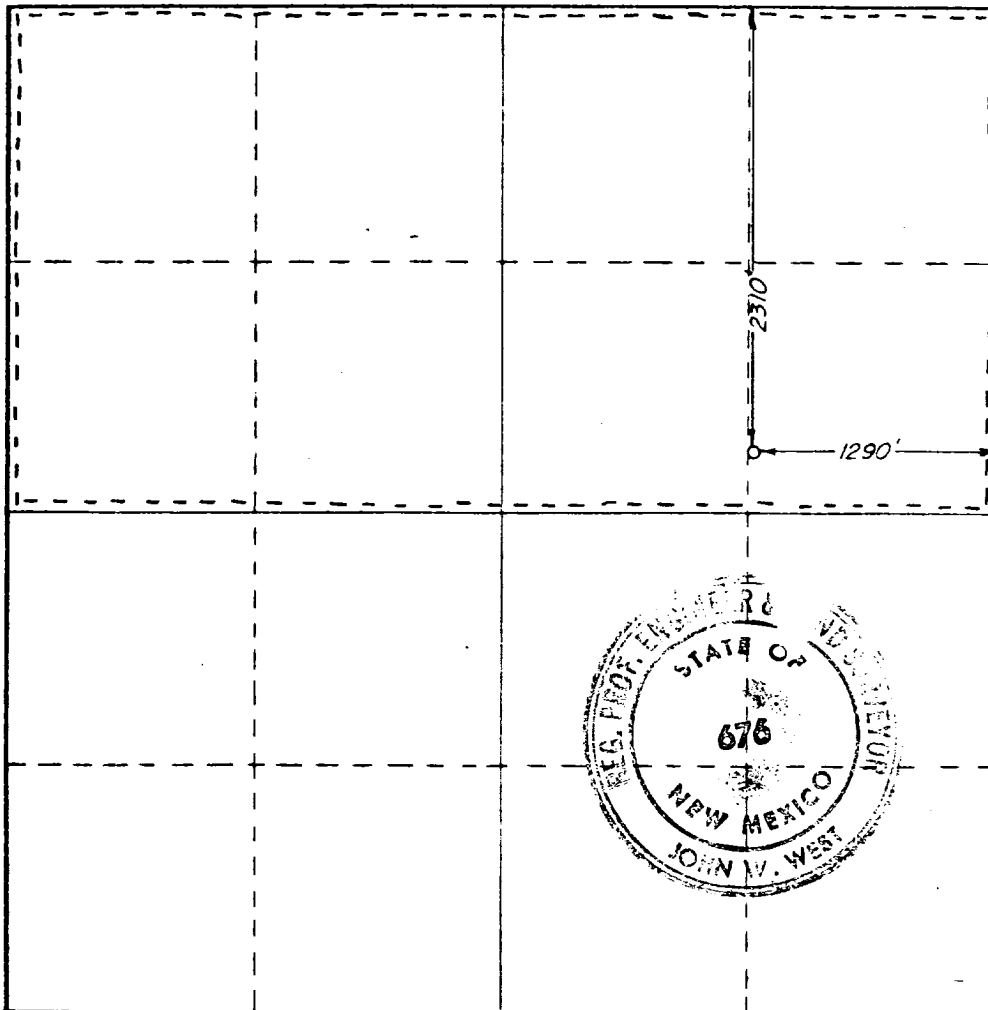
Operator CONOCO, Inc.,		Lease Federal 34		Well No. 2
Unit Letter H	Section 34	Township 20 South	Range 26 East	County Eddy
Actual Footage Location of Well: 2310 feet from the North line and 1290 feet from the East line				
Ground Level Elev. 3231.0	Producing Formation Morrow	Port Springfield 711-200	Dedicated Acreage: 3.20 Acres	

1. Outline the acreage dedicated to the subject well by colored pencil or hatchure marks on the plat below.
2. If more than one lease is dedicated to the well, outline each and identify the ownership thereof (both as to working interest and royalty).
3. If more than one lease of different ownership is dedicated to the well, have the interests of all owners been consolidated by communitization, unitization, force-pooling, etc?

☐ Yes ☐ No If answer is "yes," type of consolidation _____

If answer is "no," list the owners and tract descriptions which have actually been consolidated. (Use reverse side of this form if necessary.) _____

No allowable will be assigned to the well until all interests have been consolidated (by communitization, unitization, forced-pooling, or otherwise) or until a non-standard unit, eliminating such interests, has been approved by the Commission.



CERTIFICATION

I hereby certify that the information contained herein is true and complete to the best of my knowledge and belief

Name
Wm A. Butterfield
Position
Administrative Supervisor
Company
Conoco Inc.

Date
2/22/80

RECEIVED
I hereby certify that the well location shown on this plat was obtained from field notes and surveys made by me or under my supervision and that the same is true and correct to the best of my knowledge.
ANTHONY J. HARRIS

Date Surveyed
February 12, 1980

Registered Professional Engineer
and a Licensed Surveyor

John M. West
Certificate No. **JOHN M. WEST 676**
PATRICK A. ROMERO 6863
Ronald J. Eidson 3239

