

NEW MEXICO OIL CONSERVATION COMMISSION RECEIVED
WELL LOCATION AND ACREAGE DEDICATION PLAT

Form O-102
Superseding O-108
Effective 1-1-65

All distances must be from the outer boundaries of the Section DEC 20 1982

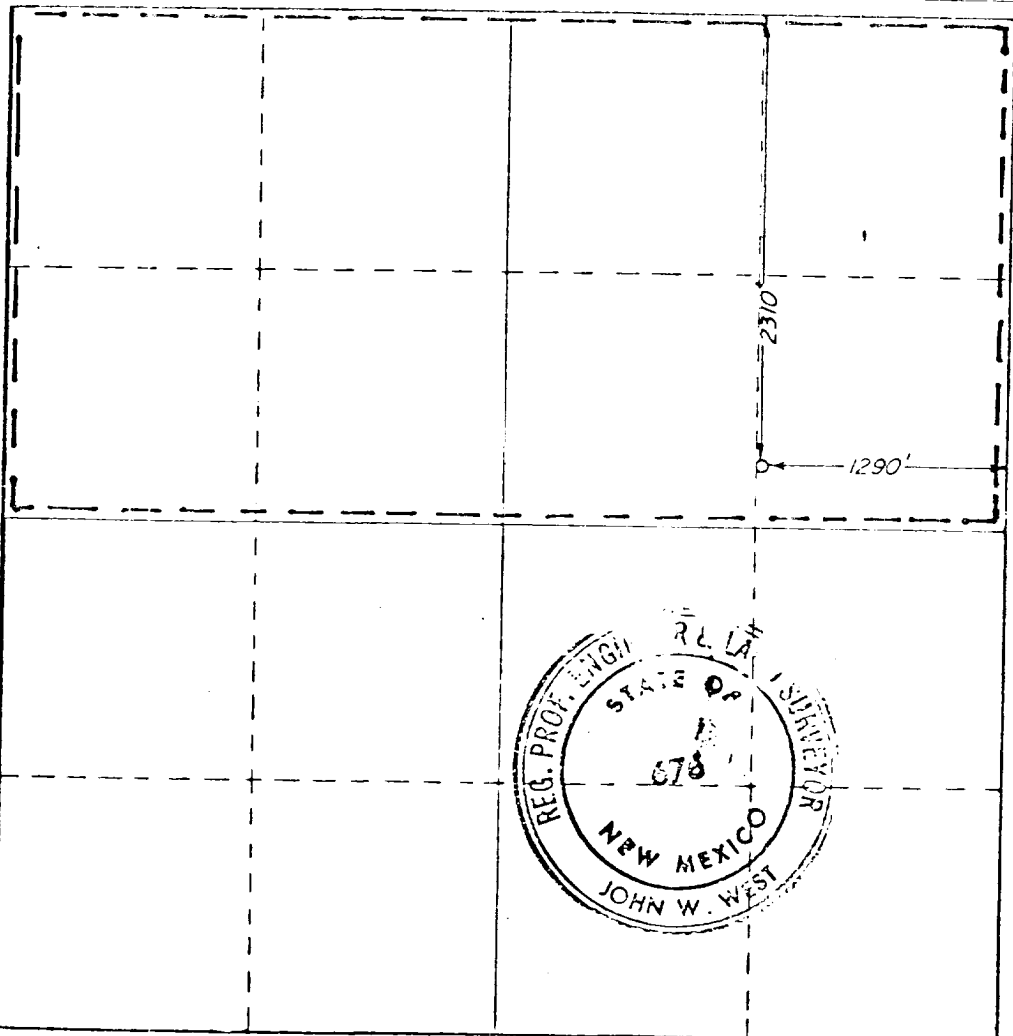
CONOCO, Inc.		Federal 34		O. C. D.		Acres 2	
Section 34	Range 20 South	County 26 East	ARTESIA, OFFICE				
Eddy							
2310 feet from the North line and		1290 feet from the East line					
3231.0	CISCO	Spring	Dedicated Acreage 320				

1. Outline the acreage dedicated to the subject well by colored pencil or hatchure marks on the plat below.
2. If more than one lease is dedicated to the well, outline each and identify the ownership thereof (both as to working interest and royalty).
3. If more than one lease of different ownership is dedicated to the well, have the interests of all owners been consolidated by communitization, unitization, force-pooling etc?

☐ Yes ☐ No If answer is "yes" type of consolidation _____

If answer is "no" list the owners and tract descriptions which have actually been consolidated. (Use reverse side of this form if necessary.) _____

No allowable will be assigned to the well until all interests have been consolidated (by communitization, unitization, forced-pooling, or otherwise) or until a non-standard unit, eliminating such interests, has been approved by the Commission.



CERTIFICATION

I hereby certify that the information contained herein is true and complete to the best of my knowledge and belief

Name
Position
Company
Date

I hereby certify that the well location shown on this plat was plotted from field notes of actual surveys made by me or under my supervision, and that the same is true and correct to the best of my knowledge and belief.

Date Surveyed	February 12, 1980
Registered Professional Engineer and Land Surveyor	
<i>John W. West</i>	
Certificate No.	JOHN W. WEST 678
	PATRICK A. ROMERO 6868
	Ronald J. Eidson 3239

