

UNITED STATES
DEPARTMENT OF THE INTERIOR
GEOLOGICAL SURVEY

APPLICATION FOR PERMIT TO DRILL, DEEPEN, OR PLUG BACK

1a. TYPE OF WORK

DRILL ☒DEEPEN ☐PLUG BACK ☐

b. TYPE OF WELL

OIL
WELL ☐GAS
WELL ☒

OTHER

SINGLE
ZONE ☒MULTIPLE
ZONE ☐

2. NAME OF OPERATOR

Amoco Production Company

3. ADDRESS OF OPERATOR

P. O. Box 68 Hobbs, NM 88240

4. LOCATION OF WELL (Report location clearly and in accordance with any State requirements.)*

At surface

At proposed prod. zone

1407' FWL & 1980' FSL

(Unit L, NW/4, SW/4, Sec. 30) U.S. B-240,111-0000

14. DISTANCE IN MILES AND DIRECTION FROM NEAREST TOWN OR POST OFFICE*

30 miles west of Carlsbad, NM

15. DISTANCE FROM PROPOSED*

LOCATION TO NEAREST
PROPERTY OR LEASE LINE, FT.
(Also to nearest drlg. unit line, if any)

16. NO. OF ACRES IN LEASE

17. NO. OF ACRES ASSIGNED
TO THIS WELL

320

18. DISTANCE FROM PROPOSED LOCATION*
TO NEAREST WELL, DRILLING, COMPLETED,
OR APPLIED FOR, ON THIS LEASE, FT.

19. PROPOSED DEPTH

10,000

20. ROTARY OR CABLE TOOLS

Rotary

21. ELEVATIONS (Show whether DF, RT, GR, etc.)

4242.8' GL

22. APPROX. DATE WORK WILL START*

1-27-81

23.

PROPOSED CASING AND CEMENTING PROGRAM

SIZE OF HOLE	SIZE OF CASING	WEIGHT PER FOOT	SETTING DEPTH	QUANTITY OF CEMENT
17-1/2"	13-3/8"	48#	300'	Circulate to surface
12-1/4"	9-5/8"	36#	2000'	Tie back to 13 3/8"
8-3/4"	5-1/2"	17#, 20#	10000'	Cement to 500' above Bone Springs (approx. 2510' from surface)

Propose to drill and equip well in the Morrow formation. After reaching TD, logs will be run and evaluated; will perforate and stimulate as necessary in attempting commercial production.

MUD PROGRAM: 0'-300' Native mud and fresh water
300'-2000' Native mud and brine
2000'-TD Commercial mud and brine with minimum properties for safe hole conditions. Will raise viscosity and reduce water loss prior to Morrow penetration.

BOP Program Attached
Gas is not dedicated
Archaeological survey attached.

0+6-4565, A 1-Hou 1-Susp 1-LBG 1-W. Stafford, Hou

IN ABOVE SPACE DESCRIBE PROPOSED PROGRAM: If proposal is to deepen or plug back, give data on present productive zone and proposed new productive zone. If proposal is to drill or deepen directionally, give pertinent data on subsurface locations and measured and true vertical depths. Give blowout preventer program, if any.

24.

SIGNED

Benton Green

TITLE Assist. Admin. Analyst

DATE 1-15-81

(This space for Federal or State office use)

PERMIT NO.

APPROVAL DATE

APPROVED (Orig. Sgd.) PETER W. CHESTER

TITLE ACTING DISTRICT ENGINEER

DATE JAN 20 1981

CONDITIONS OF APPROVAL, IF ANY:

/NSF 1-19-81

NEW MEXICO OIL CONSERVATION COMMISSION
WF LOCATION AND ACREAGE DEDICATION PLAT

Form C-102
Supersedes C-128
Effective 1-1-65

All distances must be from the outer boundaries of the Section.

Operator Amoco Production Co.		Lease Fed. B.R. Com.		Well No. 1
Unit Letter L	Section 30	Township 22 South	Range 23 East	County Eddy County, New Mexico
Actual Footage Location of Well:				
1102 feet from the West line and		1980 feet from the South line		
Ground Level Elev. 4242.8'	Producing Formation Morrow	Pool Wildcat Morrow	Dedicated Acreage: 320 Acres	

1. Outline the acreage dedicated to the subject well by colored pencil or hachure mark on the plat.
2. If more than one lease is dedicated to the well, outline each and identify the ownership thereof (both as to working interest and royalty).
3. If more than one lease of different ownership is dedicated to the well, have the interests of all owners been consolidated by communitization, unitization, force-pooling, etc?

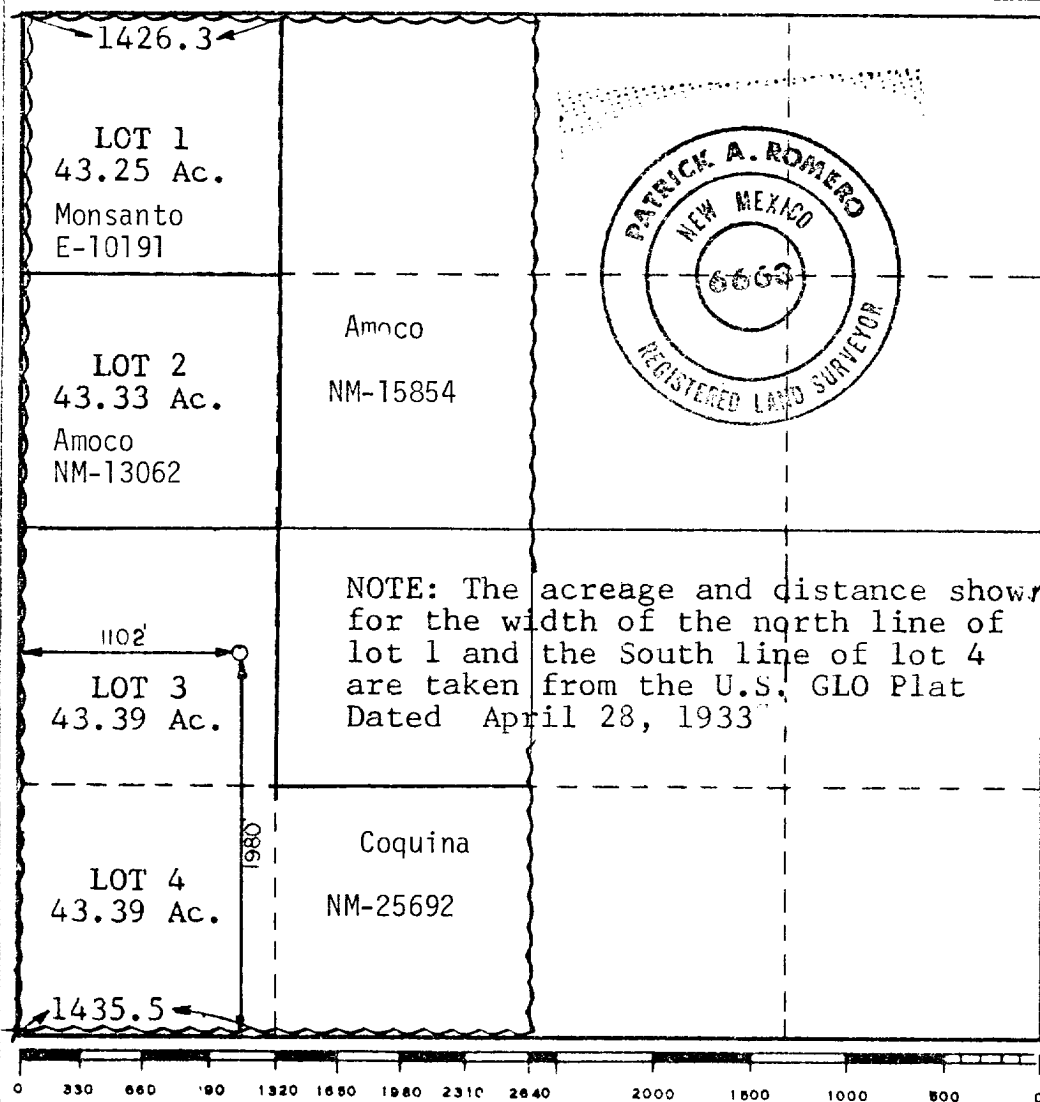
☐ Yes ☐ No If answer is "yes," type of consolidation Communitization

If answer is "no," list the owners and tract descriptions which have actually been consolidated. (Use reverse side of this form if necessary.) _____

No allowable will be assigned to the well until all interests have been consolidated (by communitization, unitization, forced-pooling, or otherwise) or until a non-standard unit, eliminating such interests, has been approved by the Commission.

RECEIVED
JAN 20 1981

U. S. GEOLOGICAL SURVEY
ROSWELL, NEW MEXICO



CERTIFICATION	
I hereby certify that the information contained herein is true and complete to the best of my knowledge and belief.	
Name	<u>Benton Green</u>
Position	<u>Assist. Admin. Analyst</u>
Company	<u>Amoco Production Company</u>
Date	<u>1-19-81</u>
I hereby certify that the well location shown on this plat was plotted from field notes of actual surveys made by me or under my supervision, and that the same is true and correct to the best of my knowledge and belief.	
Date Surveyed	<u>1-8-81</u>
Registered Professional Engineer and/or Land Surveyor	
<u>Patrick A. Romero</u>	
Certificate No.	<u>JOHN W. WEST 678</u> <u>PATRICK A. ROMERO 6663</u> <u>Ronald J. Eidson 3239</u>

3000# W.P. TWO-RAM BOP

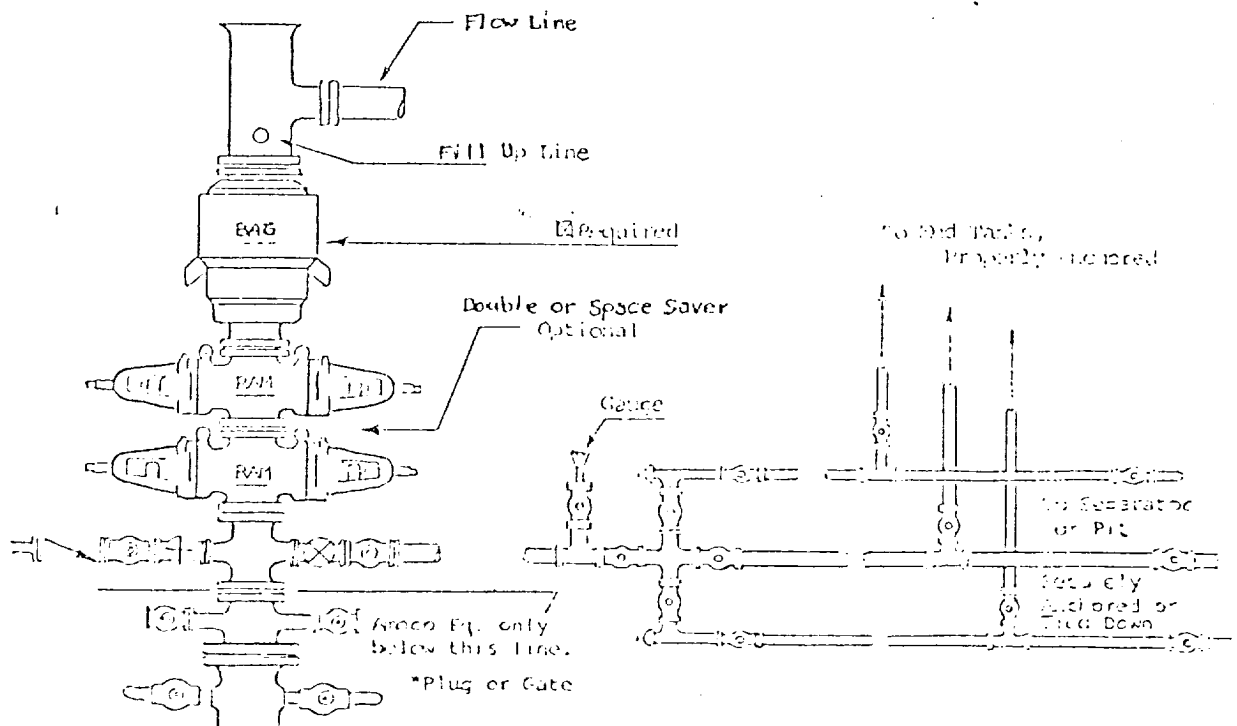
1. BOP'S TO BE FLUID OPERATED.
2. BOP'S AND ALL FITTINGS MUST BE IN GOOD CONDITION AND RATED AT 3000 PSI W.P. MINIMUM.
3. EQUIPMENT THROUGH WHICH BIT MUST PASS SHALL BE AT LEAST AS LARGE AS CASING SIZE BEING DRILLED THROUGH.
4. NIPPLE ABOVE BOP'S SHALL BE SAME SIZE AS LAST CASING SET.
5. UPPER KELLY COCK IS REQUIRED AND SHALL BE 3000# W.P. MINIMUM.
6. T. I. W. OR COMPARABLE SAFETY VALVE SHALL BE AVAILABLE ON RIG FLOOR WITH CONNECTION OR SUBS TO FIT ANY TOOL JOINT IN THE STRING. VALVE TO BE FULL BORE 5000# MIN.
7. VALVE NEXT TO SPOOL SHALL BE 4". OTHER EQUIPMENT MAY BE 3" OR 4". ALL CHOKER MANIFOLD EQUIPMENT SHALL BE FLANGED. FLOW LINE FROM MANIFOLD TO BE MINIMUM OF 3" AND STRAIGHT AS POSSIBLE WITH MINIMUM BENDS.
8. FLUID LINES FROM ACCUMULATOR TO BOP'S AND ALL REMOTE CONTROL FLUID LINES SHALL BE STEEL, AND RATED AT OR ABOVE MAXIMUM ACCUMULATOR PRESSURE. LINES SHALL BE ROUTED IN BUNDLES AND ADEQUATELY PROTECTED FROM DAMAGE.
9. USE RAMS IN FOLLOWING POSITIONS:*

	DRILLING	RUNNING CASING
UPPER RAM	DRILL PIPE	CASING
LOWER RAM	BLIND	BLIND

*AMOCO AREA SUPT. MAY REVERSE LOCATION OF RAMS.

10. CHOKER MANIFOLD, BEYOND SECOND VALVE FROM BOP'S MAY BE OPTIONALLY POSITIONED OUTSIDE OF SUBSTRUCTURE.
11. EXTENSIONS AND HAND WHEELS TO BE INSTALLED AND BRACED AT ALL TIMES.
12. TWO INCH (2") LINES AND VALVES ARE PERMITTED ON THE KILL LINE.

NOTE: ALL UNMARKED VALVES MAY BE PLUG OR GATE VALVE, METAL TO METAL SEAL.



AMOCO PRODUCTION COMPANY

Attachment to "Application for Permit to Drill", Form 9-331 C

Federal "BR" Com No. 1
1102² FWL & 1980' FSL, Section 30
Township 22-S, Range 23-E
Eddy County, New Mexico

1. Location

See attached Form C-102

2. Elevation

See attached Form C-102

3. Geologic name of surface formation.

Permian

4. Type of drilling tools and associated equipment to be utilized.

See Form 9-331 C

5. Proposed drilling depth.

See Form 9-331 C

6. Estimated tons of important geologic markers.

Glorietta	1900'	Atoka	8855'
Bone Springs	3010'	Middle Morrow	9535'
Wolfcamp	6130'	Barnett	9865'
Strawn	8647'		

7. Estimated depths at which anticipated water, oil, gas or other mineral-bearing formations are expected to be encountered.

Middle Morrow 9535'

8. Proposed casing program, including size, grade, and weight of each string and whether it is new or used.

<u>Depth</u>	<u>Size</u>	<u>Weight</u>	<u>Grade</u>	<u>New or Used</u>
300'	13 3/8"	48#	H-40	New
2000'	9 5/8"	36#	H-40	New
10000'	5 1/2"	17#, 20#	K-55, N-80	New

9. Proposed cementing program.

13 3/8"	Circulate to surface
9 5/8"	Circulate to surface
5 1/2"	Cement to 500' above Bone Springs (Approx. 2510' from surface)

10. Blowout Preventer Program is attached.

11. Type and characteristics of the proposed circulating medium or mediums to be employed for rotary drilling, and the quantities and types of mud and weighting material to be maintained.

0-300' Native mud and fresh water

300-2000' Native mud and brine

2000-TD Commercial mud and brine with minimum properties for safe hole conditions. Will raise viscosity and reduce water loss prior to Morrow penetration.

12. Testing, logging and coring programs to be followed with provisions made for required flexibility.

Compensated neutron formation density
Dual laterolog-micro SFL

13. Any anticipated abnormal pressure or temperatures expected to be encountered or potential hazards, such as hydrogen sulfide gas, along with plans for mitigating such hazards.

None anticipated

14. Anticipated starting date and duration of operation.

1-29-81 3-5-81

15. Other facets of the proposed operation operator wishes to point out for the Geological Survey's consideration of the application.

Request exemptions from the painting stipulations of Sec. 102 (a) (8) of the "Federal Land Policy and Management Act of 1976" to paint any tanks, separators, and treaters required for the production of this well, Amoco's standard gray color. If a pumping unit is required for the continued production of this well, it will be painted black with orange safety color coding which conforms with your current painting guidelines.

Amoco Production Company
Proposed Development Plan for Surface Use

Federal "BR" Com. No. 1
1102' FWL & 1980' FSL, Section 30
T-22-S, R-23-E, Eddy County, New Mexico

1. Existing roads including location of exit from main highway.

Detailed map showing drillsite location in relation to the nearest town and all existing roads within one mile of the wellsite are shown on Exhibit A.
Go 12 miles north of Carlsbad on Highway 285. Turn west on County Road 137.
Go 17.8 miles and turn right on caliche road. Go 3.9 miles to access road.

2. Planned access roads.

Access road runs 1.2 miles to location.

3. Location of existing wells.

All existing well within one mile radius are shown on Exhibit C.

4. Location of tank batteries and flow lines

If the well is commercially productive, the production facilities (i.e. tanks. seperators, & treaters) will be located on existing pad.

5. Location and type of water supply.

Fresh & brine water to be hauled by commercial hauler.

6. Source of construction materials.

Caliche will be obtained from a pit located in the SW/4 SW/4, Sec. 28, T-22-S, R-23-E.
Pit has been approved by Tom Zales/BLM, Carlsbad.

7. WASTE DISPOSAL

- a. Drill cuttings will be disposed of in the reserve pit.
- b. Drilling fluids will be allowed to evaporate in the reserve pit until the pit is dry.

- c. Trash, waste paper, garbage and junk will be burned or buried with a minimum of 24" cover. Waste material will be contained to prevent scattering by wind prior to ultimate disposal.
- d. Any produced water will be contained in tanks and be disposed of in an approved manner. Oil produced will be stored in tanks until sold, at which time it will be hauled from location.
- e. Current laws and regulations pertaining to disposal of human waste will be complied with.
- f. If productive, maintenance waste will be placed in special containers and buried or hauled away periodically.

8. ANCILLARY FACILITIES-

No camps, airstrips, etc. will be constructed.

9. WELLSITE LAYOUT-

- a. Size of Drilling Pad - 330' x 210' x 6"
- b. Compacted - Caliche
- c. Surfaced - No
- d. 450' square area around wellsite has been cleared by archaeologist.
- e. See Exhibit "D".

10. RESTORATION OF SURFACE-

Producing Well - all pits will be cut, filled, and leveled as soon as practical to original condition with rehabilitation to commence following removal of drilling and completion equipment. Rehabilitation to be completed in 180 days if possible.

Dry Hole - same as above with dry hole marker to be installed and surface reseeded if required.

11. OTHER INFORMATION-

- a. Terrain - Undulating plain
- b. Soil- Sandy loam
- c. Vegetation- Fourwing saltbrush, broom snakeweed, mesquite, soap tree yucca, sumal, bush muhly, hairy grama,
- d. Surface Use- grazing
- e. Ponds and Streams - none
- f. Water Wells none
- g. Residences and Building - none
- h. Arroyos, Canyons, etc. - near Dunnaway Draw
- i. Well Sign - Posted at drill site
- j. Open Pits - All pits containing liquid or mud will be fenced
- k. Archaeological Resources - none found

12. OPERATOR'S REPRESENTATIVE -

Field personnel responsible for compliance with development plan for surface use is:

J. H. Hankins, Drilling Supervisor

P. O. Box 68

Hobbs, NM 88240

Office Phone: (505) 393-2167

LEASE & WELL NUMBER NM-25692, Federal "BR" Com. Well No. 1

LOCATION 110²' FWL & 1980' FSL, Section 30, T-22-S, R-23-E
Eddy County, New Mexico

Certification: The following statement is to be incorporated in the plan and must be signed by the lessee's or operator's field representative who is identified in Item No. 12 of the plan.

I hereby certify that I, or persons under my direct supervision have inspected the proposed drillsite and access route; that I am familiar with the conditions which presently exist; that the statements made in this plan are, to the best of my knowledge, true and correct; and, that the work associated with the operations proposed herein will be performed by AMOCO PRODUCTION COMPANY and its contractors and subcontractors in conformity with this plan and the terms and conditions under which it is approved.

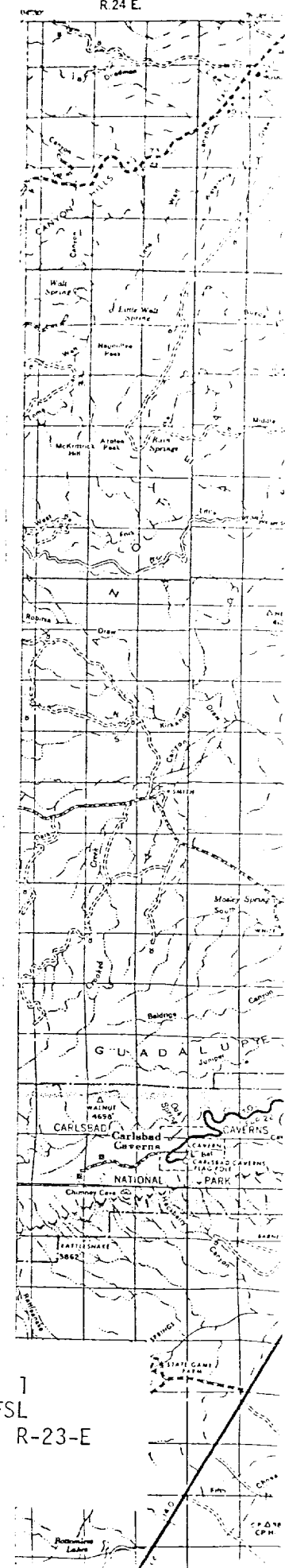
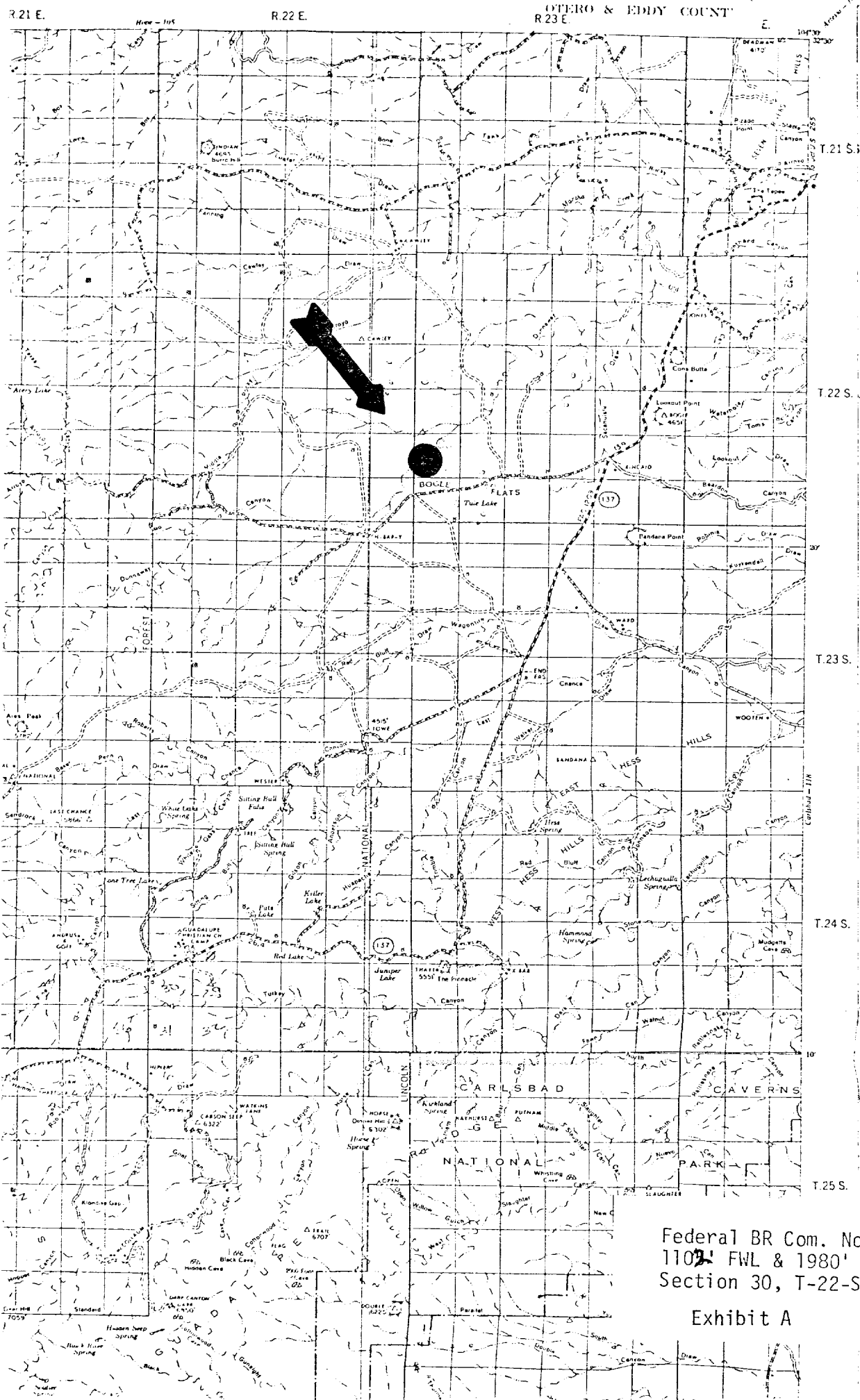
January 15, 1981

DATE

J. H. Hawkins Drilling Supervisor
NAME AND TITLE

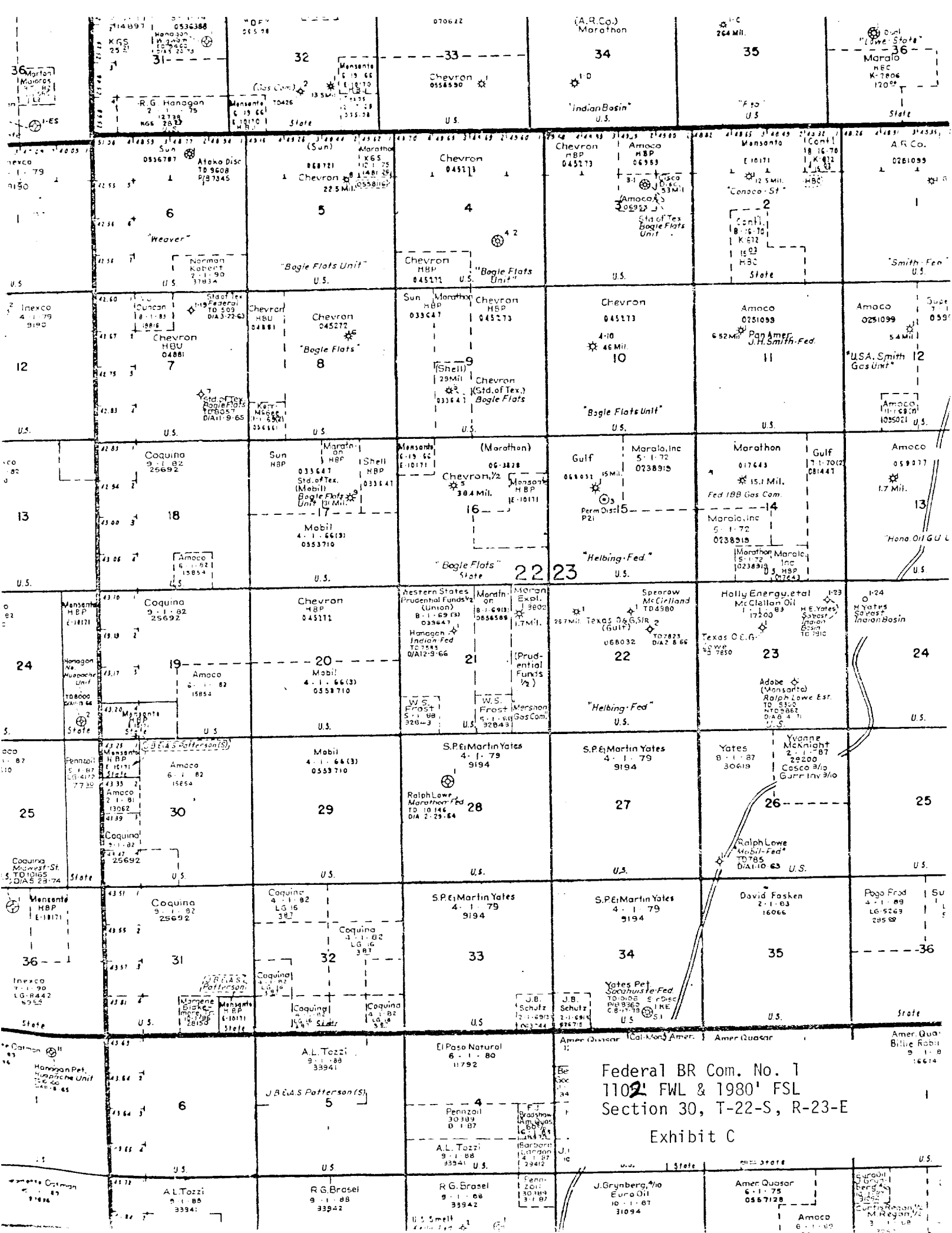
EL PASO GAP QUADRANGLE-117
OTERO & EDDY COUNT

NEW MEXICO STATE HIGHWAY
PLANNING AND PROGRAMMING
BUREAU OF PUBLIC ROADS



Federal BR Com. No. 1
1102' FWL & 1980' FSL
Section 30, T-22-S, R-23-E

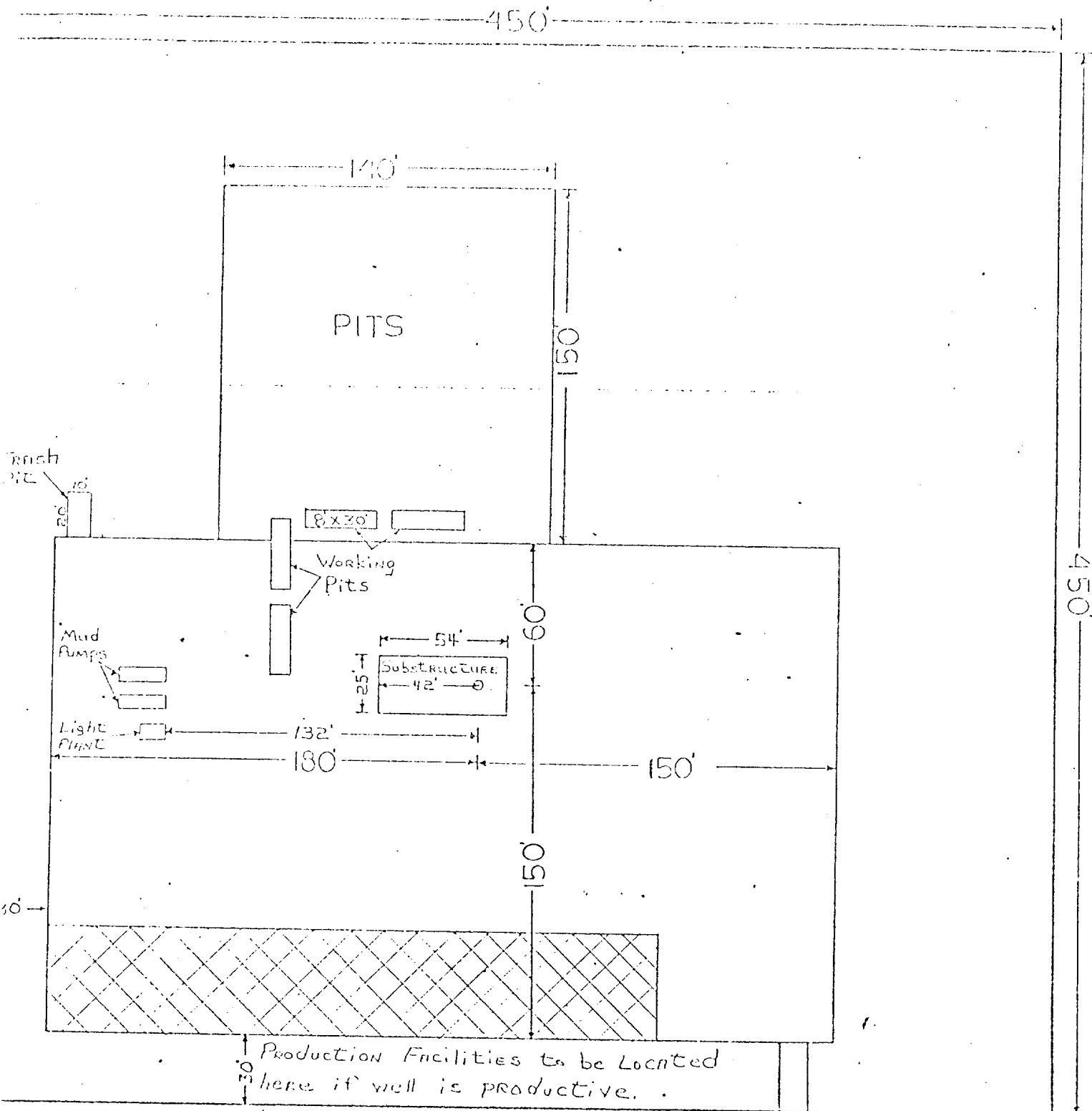
Exhibit A



DRILL SITE DIMENSIONS

D

8000' TO 14000'



Federal BR Com. NO. 1
 1102' FWL & 1980' FSL
 Section 30, T-22-S, R-23-E
 Exhibit D