

MEXICO OIL CONSERVATION COMMISSION
WELL LOCATION AND ACREAGE DEDICATION PLAT

Form C-102
Supersedes C-128
Effective 1-1-65

All distances must be from the outer boundaries of the Section

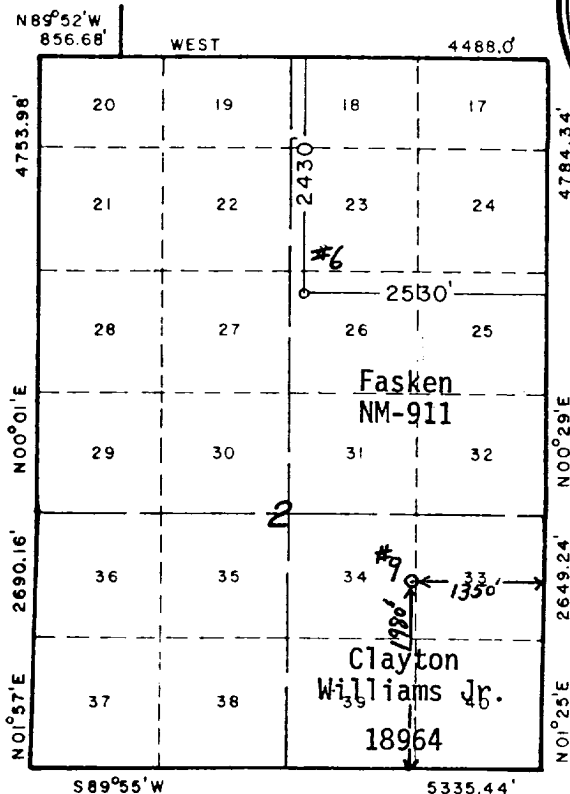
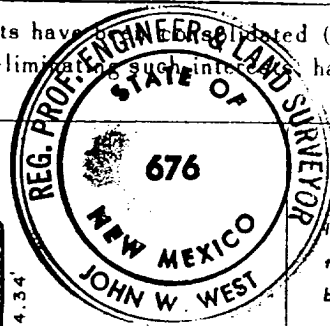
Operator Fasken Oil and Ranch, Ltd.		Lease El Paso Federal		Well No. 6
Unit Letter J	Section 2	Township 21 South	Range 26 East	County Eddy
Approximate Location of Well:				
2430	feet from the North	line and	2530	feet from the East
3192.6'	Producing Formation Morrow	Pool Avalon	Dedicated Acreage 320	

- Outline the acreage dedicated to the subject well by colored pencil or hachure marks on the plat below.
- If more than one lease is dedicated to the well, outline each and identify the ownership thereof (both as to working interest and royalty).
- If more than one lease of different ownership is dedicated to the well, have the interests of all owners been consolidated by communitization, unitization, force-pooling, etc? Working interest unit w/ **Fasken as operator.**

☒ Yes ☐ No If answer is "yes," type of consolidation **All Federal Acreage - Fasken Lots 25, 26, 31, 32 & 34; Clayton Williams, Jr. Lots 33, 39 & 40.**

If answer is "no," list the owners and tract descriptions which have actually been consolidated (Use reverse side of this form if necessary.)

No allowable will be assigned to the well until all interests have been consolidated (by communitization, unitization, forced-pooling, or otherwise) or until a non-standard unit, eliminating such interest, has been approved by the Commission.



SCALE: 1" = 2000'

CERTIFICATION

I hereby certify that the information contained herein is true and complete to the best of my knowledge and belief.

Robert H. Angevine
Name

Robert H. Angevine

Position

Agent

Company

FASKEN Oil and Ranch, Ltd.

Date

5-22-81

I hereby certify that the well location shown on this plat was plotted from field notes of actual surveys made by me or under my supervision, and that the same is true and correct to the best of my knowledge and belief.

Date Surveyed

May 18, 1981

Registered Professional Engineer and/or Land Surveyor

John W. West

Certificate No. **JOHN W. WEST 676**
PATRICK A. ROMERO 6483
Ronald J. Eldson 3289

