

NEW MEXICO OIL CONSERVATION COMMISSION  
WELL LOCATION AND ACREAGE DEDICATION PLAT

Form C-102  
Supersedes C-128  
Effective 1-1-65

All distances must be from the outer boundaries of the Section

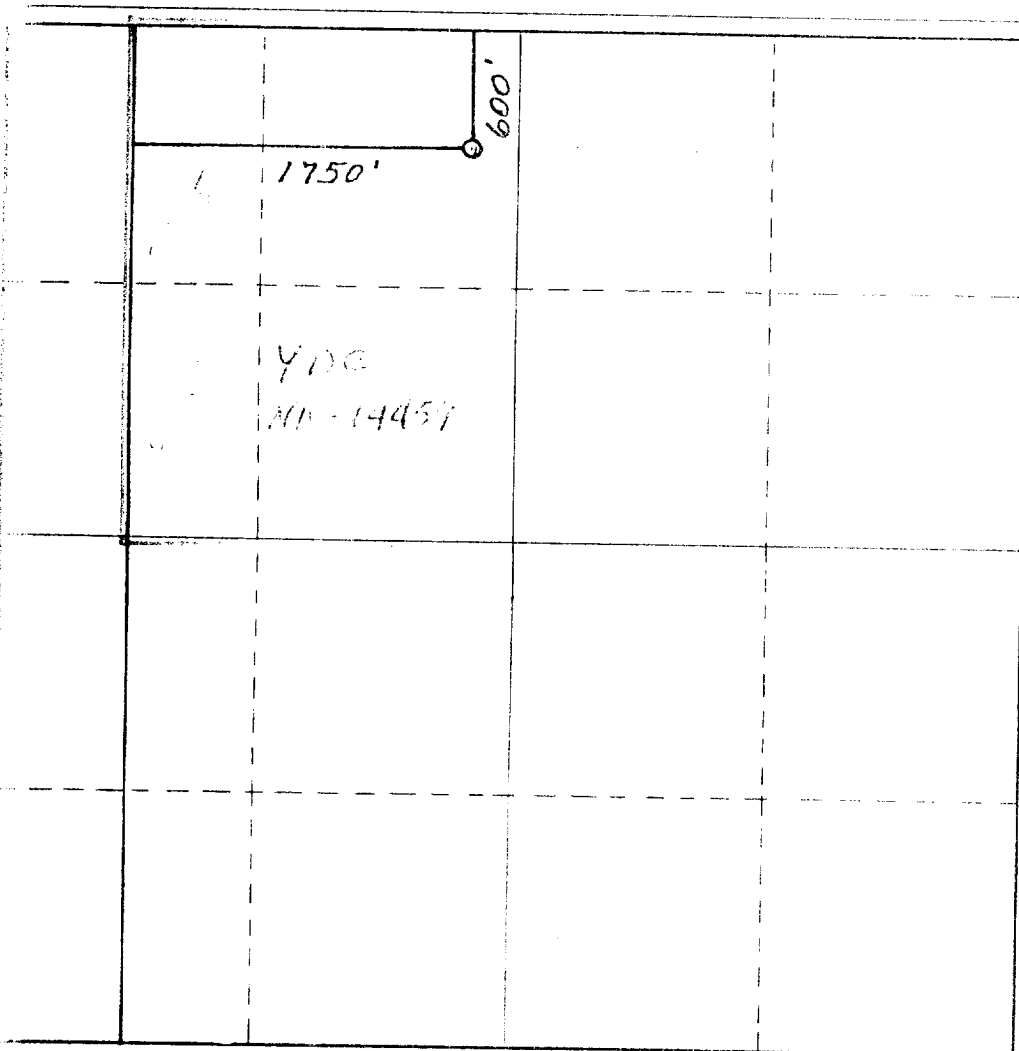
Operator Yates Petroleum Corporation			Lease Mescal "SE" Pool		Well No. 1
Alt Letter C	Section 18	Township 21S	Range 22E	County Eddy	
Actual Footage Location of Well: 600 feet from the North line and 1750 feet from the West line					
Ground Level Elev. 4420'	Producing Formation MCKINNEY		Pool Little	Estimated Acreage 280 Acres	

1. Outline the acreage dedicated to the subject well by colored pencil or hatchure marks on the plat below.
2. If more than one lease is dedicated to the well, outline each and identify the ownership thereof (both as to working interest and royalty).
3. If more than one lease of different ownership is dedicated to the well, have the interests of all owners been consolidated by communitization, unitization, force-pooling, etc?

☐ Yes ☒ No If answer is "yes," type of consolidation \_\_\_\_\_

If answer is "no," list the owners and tract descriptions which have actually been consolidated. (Use reverse side of this form if necessary.) \_\_\_\_\_

No allowable will be assigned to the well until all interests have been consolidated (by communitization, unitization, forced-pooling, or otherwise) or until a non-standard unit, eliminating such interests, has been approved by the Commission.



CERTIFICATION

I hereby certify that the information contained herein is true and complete to the best of my knowledge and belief.

Name  
Section  
County  
Company  
Date

**DAN R. REDDY**  
NEW MEXICO  
I hereby certify the well location shown on this plat was plotted from field notes of survey made by me or under my supervision and that the same is true and correct to the best of my knowledge and belief.  
**PROFESSIONAL ENGINEER**

Subscribed and sworn to before me on  
November 19, 1981  
Testated Professional Engineer  
in the State of New Mexico  
*Dan R. Reddy*  
Certificate No.  
NM PE&LS #5492