

## OIL CONSERVATION DIVISION

P. O. BOX 2088

Form C-102  
Revised 10-1-79STATE OF NEW MEXICO  
ENERGY AND MINERALS DEPARTMENT

SANTA FE, NEW MEXICO 87501

All distances must be from the outer boundaries of the Section.

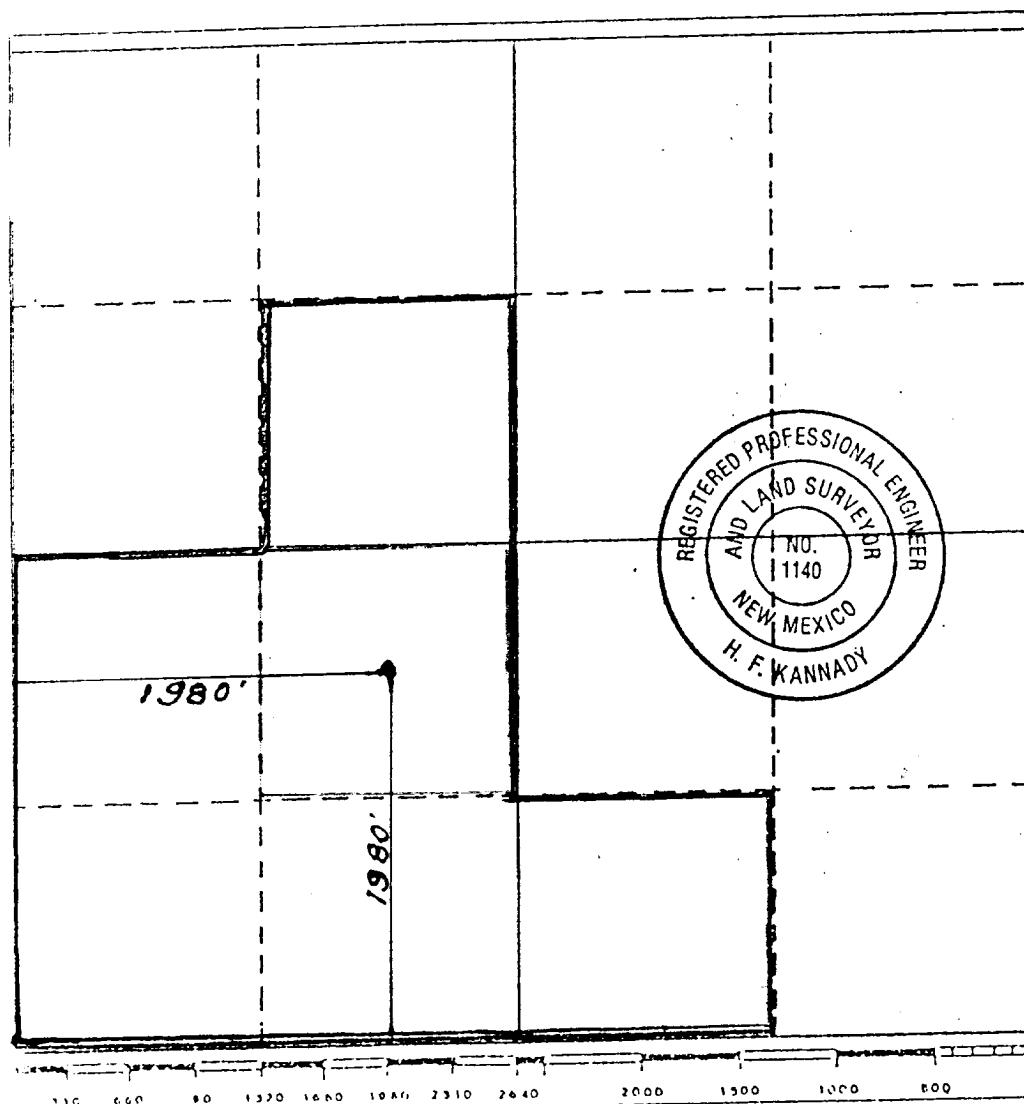
Lease		Well No.	
Barber Oil, Inc.		12	
Saladar Unit <del>91-016916</del>			
Section	Township	Range	County
33	20 South	28 East	Eddy
Nearest Postage Location of Well:			
1980	feet from the South	line and 1980'	feet from the West
Sound Level Elev.	Producing Formation	Pool	Dedicated Acreage:
3198	Yates Sand	Saladar	280 Acres

1. Outline the acreage dedicated to the subject well by colored pencil or hatchure marks on the plat below.
2. If more than one lease is dedicated to the well, outline each and identify the ownership thereof (both as to working interest and royalty).
3. If more than one lease of different ownership is dedicated to the well, have the interests of all owners been consolidated by communitization, unitization, force-pooling, etc?

☒ Yes ☐ No If answer is "yes," type of consolidation Unit # 14-08-0001-16916

If answer is "no," list the owners and tract descriptions which have actually been consolidated. (Use reverse side of this form if necessary.)

No allowable will be assigned to the well until all interests have been consolidated (by communitization, unitization, forced-pooling, or otherwise) or until a non-standard unit, eliminating such interests, has been approved by the Division.



## CERTIFICATION

I hereby certify that the information contained herein is true and complete to the best of my knowledge and belief.

Name

Position

President

Company

Barber Oil, Inc.

Date

3-18-82

I hereby certify that the well location shown on this plat was plotted from field notes of actual surveys made by me or under my supervision, and that the same is true and correct to the best of my knowledge and belief.

Date Surveyed

3-16-82

Registered Professional Engineer  
and/or Land Surveyor

H. F. Kannady

Certificate No.

1140