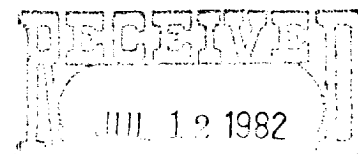


EXXON CORPORATION  
YATES FEDERAL "C" NO. 3  
660' FNL, 1980' FEL  
Section 31, T20S, R28E  
Eddy County, New Mexico  
Federal Lease No. NM-01119



1. The geologic name of the surface formation: Recent.

2. The estimated tops of important geologic markers:

Salado	150'
Yates	600'
Seven Rivers	800'
Queen	1200'
Grayburg	1350'
San Andres	1500'
Delaware	2500'
Bone Spring	4700'

3. The estimated depths at which anticipated water, oil, gas, or other mineral bearing formations are expected to occur:

Water	60' - 150'
Oil	
Delaware	2500'
Bone Spring	4700'

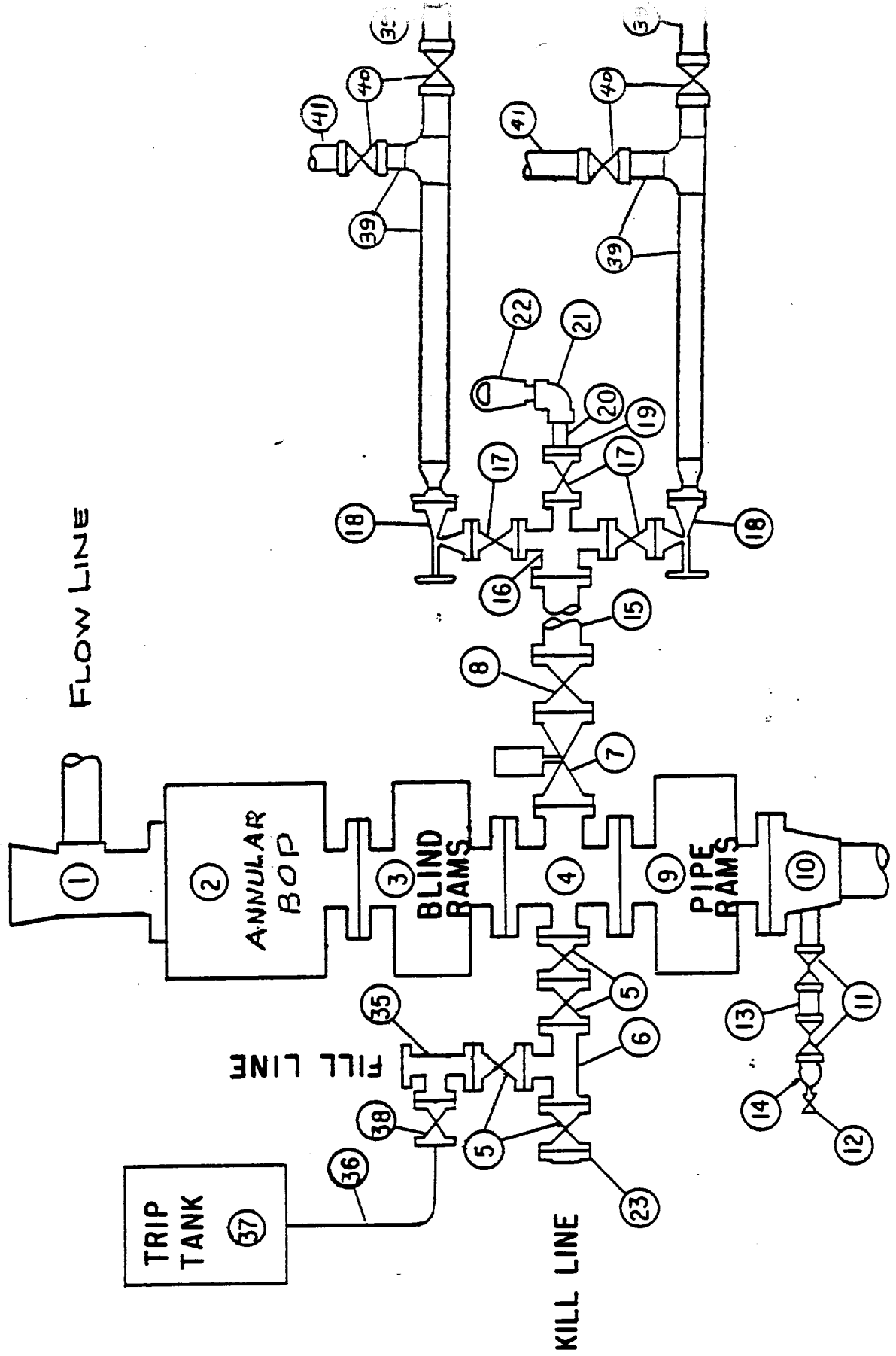
4. Proposed casing program:

<u>STRING</u>	<u>SIZE</u>	<u>WEIGHT/GRADE</u>	<u>CONDITION</u>	<u>DEPTH INTERVAL</u>
Conductor	13-3/8"	54.5#/K-55	New	0- 40'
Surface	8-5/8"	24#/K-55	New	0- 600'
Production	5-1/2"	14#/K-55	New	0-4700'
Tubing	2-7/8"	6.5#/J-55	New	0-4600'

5. Minimum specifications for pressure control equipment:

- A. Wellhead equipment - Threaded type, 2000 psi WP for 8-5/8" x 5-1/2" casing program with 2-7/8" tubing hanger.
- B. Blowout preventers - Refer to attached drawings and lists of equipment titled "Type II-C" for description of BOP stacks and choke manifold.
- C. BOP control unit - Unit will be hydraulically operated and have at least two control stations.

MIDLAND DRILLING ORGANIZATION  
 BLOWOUT PREVENTER SPECIFICATION  
 TYPE II - C



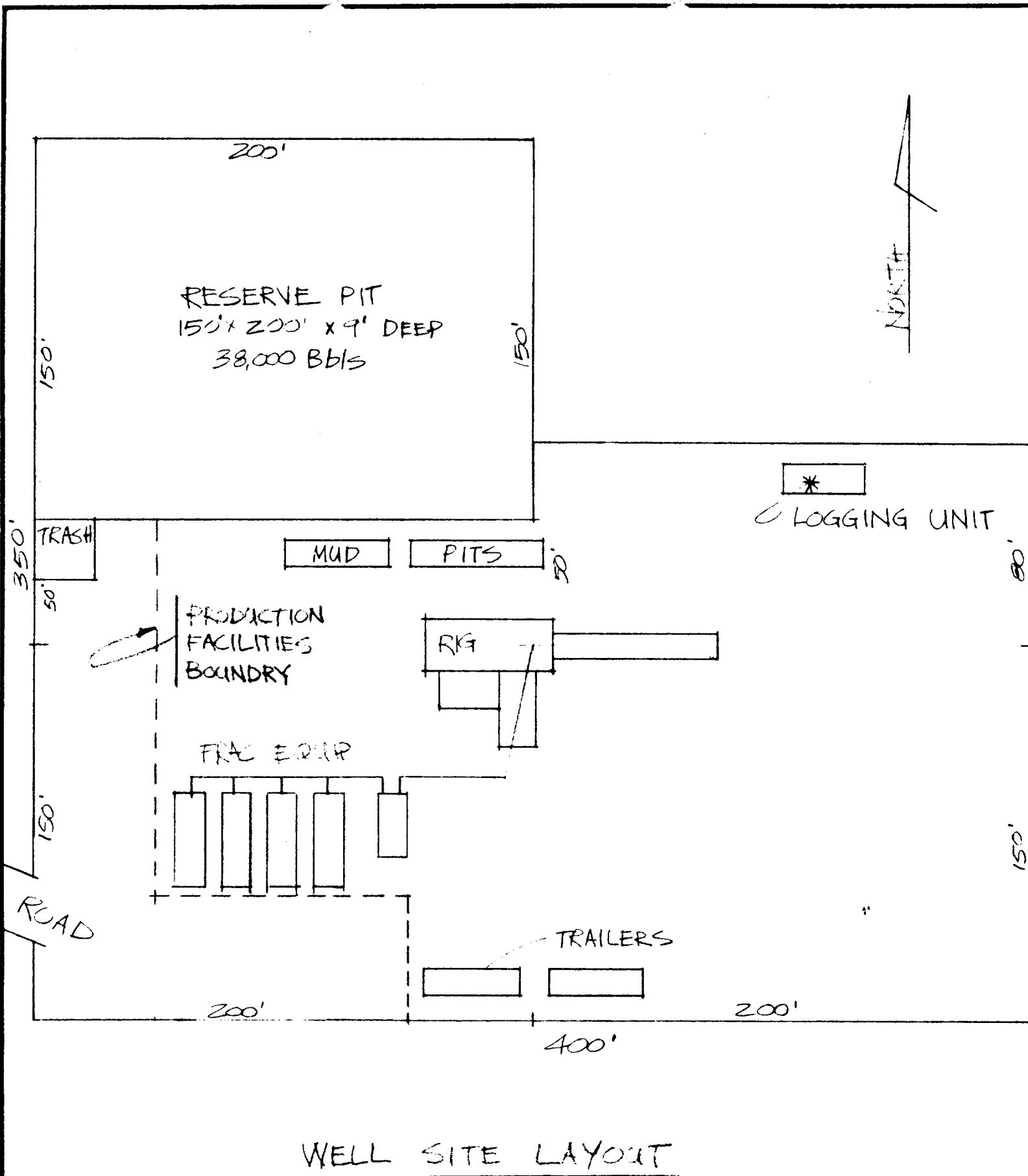


EXHIBIT "B"

YATES FEDERAL "C" #3  
NW NE SEC 31 T.20S, R.28E.  
EDDY CO. N.M.

**EXXON** COMPANY, U.S.A. (a division of Exxon Corporation)  
**PRODUCTION DEPARTMENT**

DRAWN M.B.

ENGR. SECTION \_\_\_\_\_ REVISED \_\_\_\_\_

DATE 7/5/22

JOB NO. \_\_\_\_\_

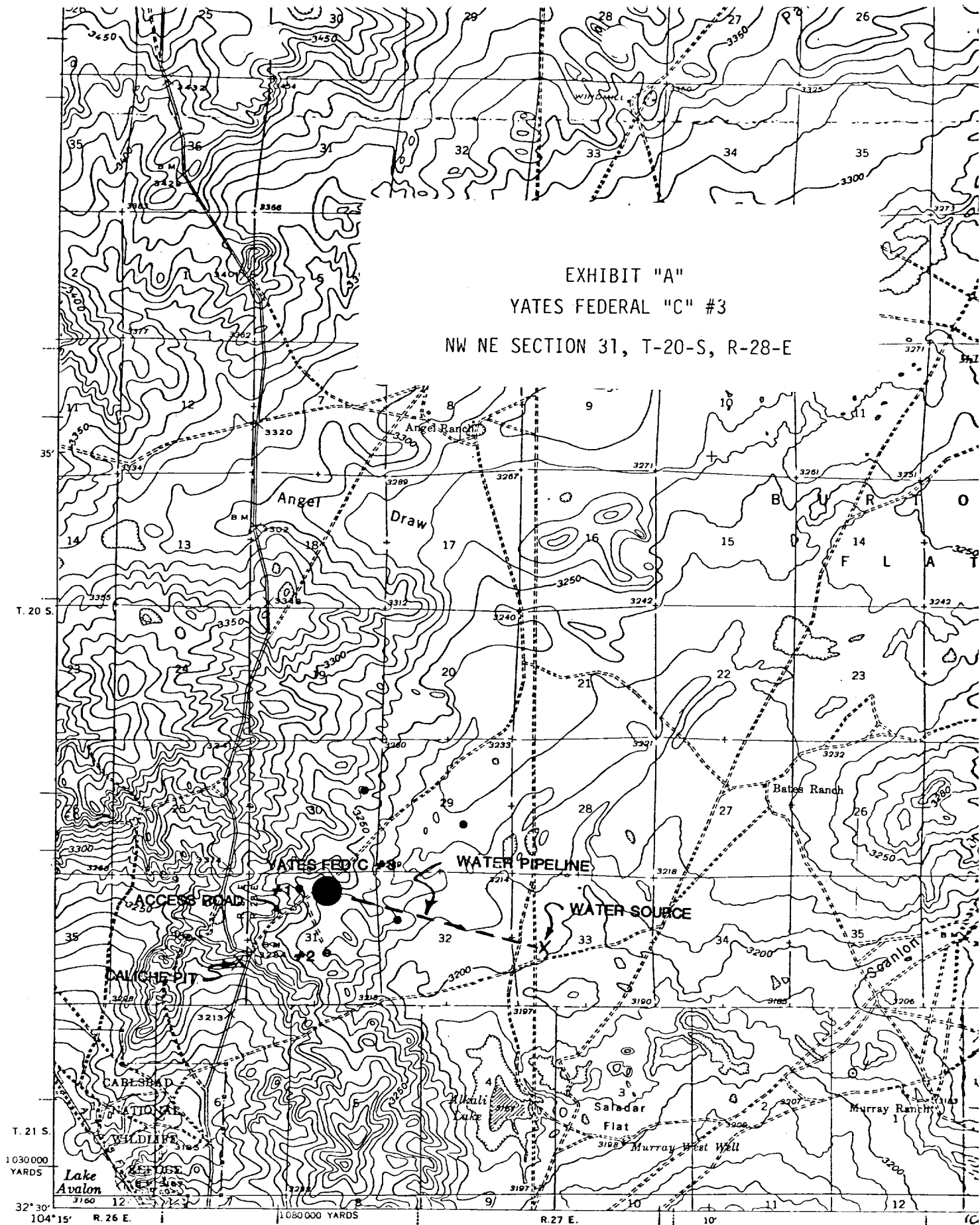
FILE NO. \_\_\_\_\_

CHECKED \_\_\_\_\_

APPROVED \_\_\_\_\_

SCALE 1"=50'

NB-1765

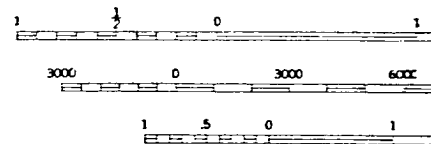


Topography by Max J. Gleissner, S. T. Penick,  
M. C. McClellan, and C. E. Walker  
Surveyed in 1935 and 1938

#### ROAD CLASSIFICATION

HARD-SURFACE ALL WEATHER ROADS	DRY WEATHER ROADS
Heavy-duty ——— 4 LANE 16 LANE	Improved dirt ———
Medium-duty ——— 4 LANE 16 LANE	Unimproved dirt ———
Loose-surface, graded, or narrow hard-surface ———	

121°  
TRUE NORTH  
MAGNETIC NORTH  
APPROXIMATE MEAN  
DECLINATION, 1938



Federal Lse. No. \_\_\_\_\_ All distances must be from the outer boundaries of the Section.

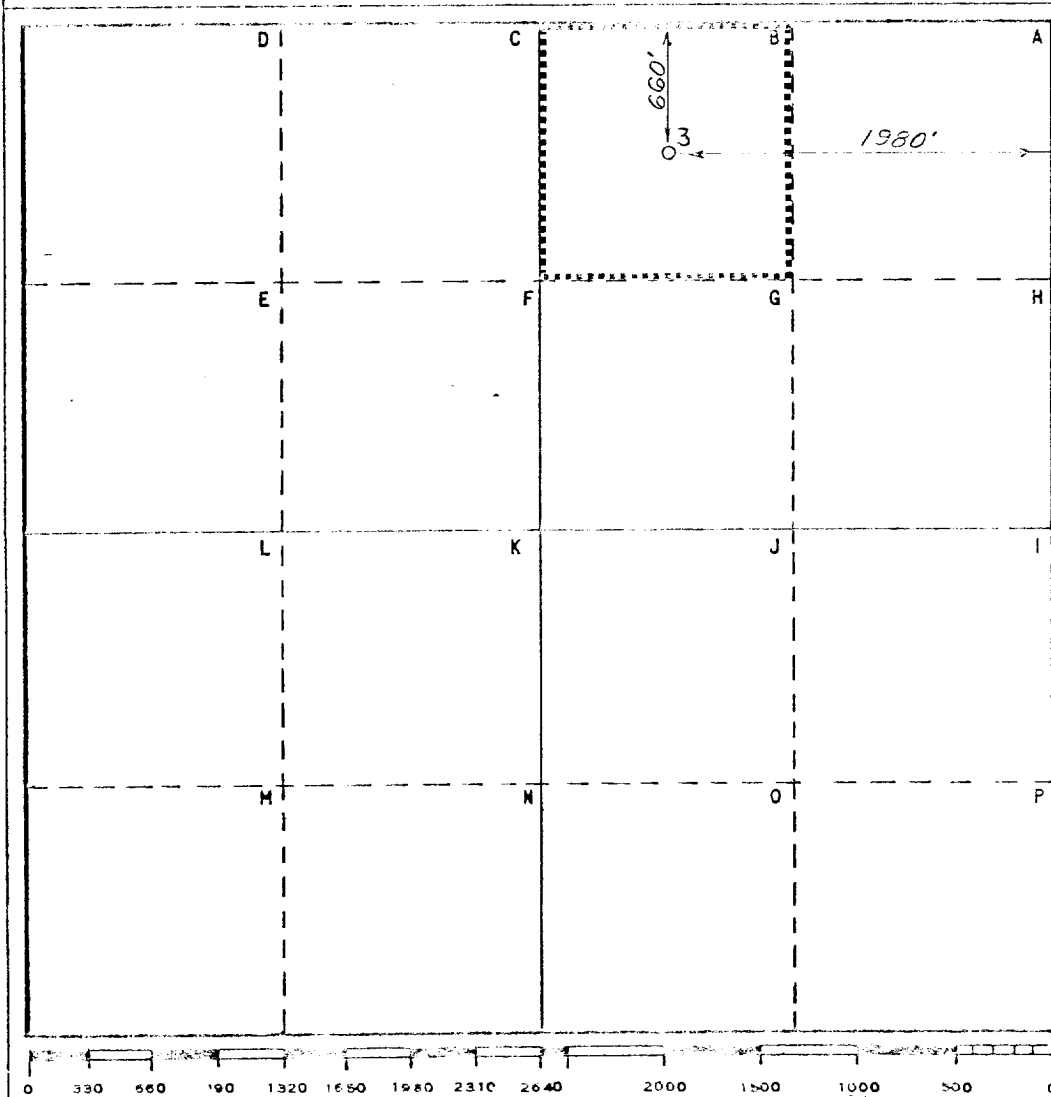
Operator Exxon Corporation			Lease Yates Federal "C"		Well No. 3
Unit Letter B	Section 31	Township 20 S	Range 28 E	County Eddy	
Actual Footage Location of Well: 660 feet from the North line and 1980 feet from the East line					
Ground Level Elev: 3245'	Producing Formation Grayburg		Pool Wildcat	Dedicated Acreage: 40 Acres	

1. Outline the acreage dedicated to the subject well by colored pencil or hachure marks on the plat below.
2. If more than one lease is dedicated to the well, outline each and identify the ownership thereof (both as to working interest and royalty).
3. If more than one lease of different ownership is dedicated to the well, have the interests of all owners been consolidated by communization, unitization, force-pooling, etc?

☐ Yes ☐ No If answer is "yes," type of consolidation \_\_\_\_\_

If answer is "no," list the owners and tract descriptions which have actually been consolidated. (Use reverse side of this form if necessary.) \_\_\_\_\_

No allowable will be assigned to the well until all interests have been consolidated (by communization, unitization, forced-pooling, or otherwise) or until a non-standard unit, eliminating such interests, has been approved by the Commission.



#### CERTIFICATION

I hereby certify that the information contained herein is true and complete to the best of my knowledge and belief.

Name  
*Melba Knepling*  
 Position  
 UNIT HEAD  
 Company Exxon Corporation  
 Box 1600 Midland, Texas  
 Date  
 7-9-82

I hereby certify that the well location shown on this plat was plotted from field notes of actual surveys made by me or under my supervision, and that the same is true and correct to the best of my knowledge and belief.

Date Surveyed  
 6-30-82

Registered Professional Engineer and/or Land Surveyor  
*W. J. Leonard*

Certificate No.  
 6157

6.3 Miles North of Carlsbad, New Mexico

C.E. Sec. File No. W-A-1724