

NM OIL CONS. COMMISSION
UNITED STATES
DEPARTMENT OF THE INTERIOR
ARTESIA, NM
GEOLOGICAL SURVEY

SUBMIT IN TRIPLICATE*
 (Other inst ons on reverse e)

Form approved.
 Budget Bureau No. 42-R1425

C/S 7

APPLICATION FOR PERMIT TO DRILL, DEEPEN, OR PLUG BACK

1a. TYPE OF WORK

DRILL ☒

DEEPEN ☐

PLUG BACK ☐

b. TYPE OF WELL

OIL WELL ☒

GAS WELL ☐

OTHER ☐

SINGLE ZONE ☒

MULTIPLE ZONE ☐

2. NAME OF OPERATOR

Exxon Corporation ✓

3. ADDRESS OF OPERATOR

P. O. Box 1600, Midland, TX 79702

JAN 07 1983

4. LOCATION OF WELL (Report location clearly and in accordance with any State requirements.)*

At surface

660' FSL and 1980' FEL of Section

ARTESIA OFFICE

At proposed prod. zone

ut. 0

14. DISTANCE IN MILES AND DIRECTION FROM NEAREST TOWN OR POST OFFICE*

6 miles North from Carlsbad

15. DISTANCE FROM PROPOSED*

LOCATION TO NEAREST 660' lease line
 PROPERTY OR LEASE LINE, FT.
 (Also to nearest drlg. unit line, if any) 660' drlg. line

16. NO. OF ACRES IN LEASE

2261.75

17. NO. OF ACRES ASSIGNED TO THIS WELL

40

18. DISTANCE FROM PROPOSED LOCATION*

TO NEAREST WELL, DRILLING, COMPLETED,
 OR APPLIED FOR, ON THIS LEASE, FT. 1320' E to #14

19. PROPOSED DEPTH

4700'

20. ROTARY OR CABLE TOOLS

Rotary

21. ELEVATIONS (Show whether DF, RT, GR, etc.)

3248' GR

22. APPROX. DATE WORK WILL START*

January 19, 1983

23.

PROPOSED CASING AND CEMENTING PROGRAM

SIZE OF HOLE	SIZE OF CASING	WEIGHT PER FOOT	SETTING DEPTH	QUANTITY OF CEMENT
17 1/2"	13 3/8"	54.5#	40'	21 SX CIRCULATE
12 1/4"	8 5/8"	24.0#	600'	280 SX CIRCULATE
7 7/8"	5 1/2"	14.0#	4700'	1800 SX CIRCULATE

Gas is not dedicated to a purchaser.

RECEIVED
 DEC 23 1982
 OIL & GAS
 MINERALS MGMT. SERVICE
 ROSWELL, NEW MEXICO
*Posted a #3
 12-12-82
 1-14-83*

IN ABOVE SPACE DESCRIBE PROPOSED PROGRAM: If proposal is to deepen or plug back, give data on present productive zone and proposed new productive zone. If proposal is to drill or deepen directionally, give pertinent data on subsurface locations and measured and true vertical depths. Give blowout preventer program, if any.

24.

SIGNED

Melba Krueger

TITLE

Unit Head

DATE

December 22, 1982

(This space for Federal or State office use)

PERMIT NO.

APPROVED

APPROVAL DATE

(ORIG. SGD.) DAVID R. GLASS

APPROVED BY

TITLE

DATE

CONDITIONS OF APPROVAL, IF ANY:

JAN 5 1983

For JAMES A. GILLHAM
 DISTRICT SUPERVISOR

*See Instructions On Reverse Side

Exxon Lse. No. _____

NEW MEXICO OIL CONSERVATION COMMISSION

Form C-102
Supersedes C-128
Effective 1-1-65

State Lse. No. _____

WELL LOCATION AND ACREAGE DEDICATION PLAT

Federal Lse. No. _____

All distances must be from the outer boundaries of the Section.

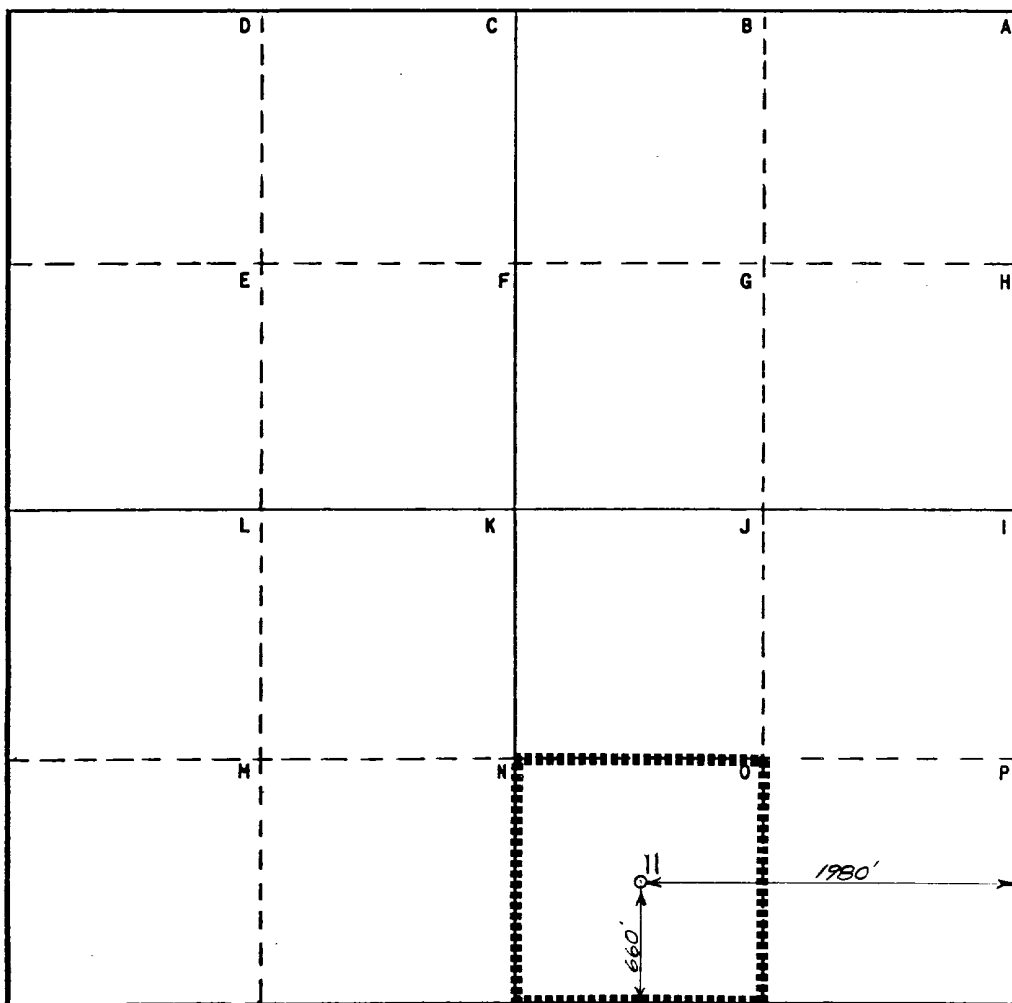
Operator Exxon Corporation			Lease Yates Federal "C"			Well No. 11		
Unit Letter O	Section 31	Township 20 S	Range 28 E	County Eddy				
Actual Footage Location of Well: 1980 feet from the East line and 660 feet from the South line								
Ground Level Elev: 3240.1		Producing Formation Delaware		Pool Undes. Burton Flat <i>Hutton Delaware</i>		Dedicated Acreage: 40 Acres		

1. Outline the acreage dedicated to the subject well by colored pencil or hachure marks on the plat below.
2. If more than one lease is dedicated to the well, outline each and identify the ownership thereof (both as to working interest and royalty).
3. If more than one lease of different ownership is dedicated to the well, have the interests of all owners been consolidated by communitization, unitization, force-pooling, etc?

☐ Yes ☐ No If answer is "yes," type of consolidation _____

If answer is "no," list the owners and tract descriptions which have actually been consolidated. (Use reverse side of this form if necessary.) _____

No allowable will be assigned to the well until all interests have been consolidated (by communitization, unitization, forced-pooling, or otherwise) or until a non-standard unit, eliminating such interests, has been approved by the Commission.



CERTIFICATION

I hereby certify that the information contained herein is true and complete to the best of my knowledge and belief.

Name *Edgar Runkel*
Position UNIT HEAD

Company Exxon Corporation
Box 1600 Midland, Texas

Date 12-21-82

I hereby certify that the well location shown on this plat was plotted from field notes of actual surveys made by me or under my supervision, and that the same is true and correct to the best of my knowledge and belief.

Date Surveyed 12-16-82

Registered Professional Engineer and/or Land Surveyor

W. J. Richmond
Certificate No.

6157

6 Miles N of CARLSBAD, New Mexico

C.E. Sec. File No. _____

EXXON CORPORATION
 YATES FEDERAL "C" NO. 11
 660' FSL, 1980' FEL
 Section 31, T20S, R28E
 Eddy County, New Mexico
 Federal Lease No. 01119

1. The geologic name of the surface formation: Recent.
2. The estimated tops of important geologic markers:

Salado	150'
Yates	600'
Seven Rivers	800'
Queen	1200'
Grayburg	1350'
San Andres	1500'
Delaware	2500'
Bone Spring	4700'

3. The estimated depths at which anticipated water, oil, gas, or other mineral bearing formations are expected to occur:

Water	60' - 150'
Oil	
Delaware	2500'
Bone Spring	4700'

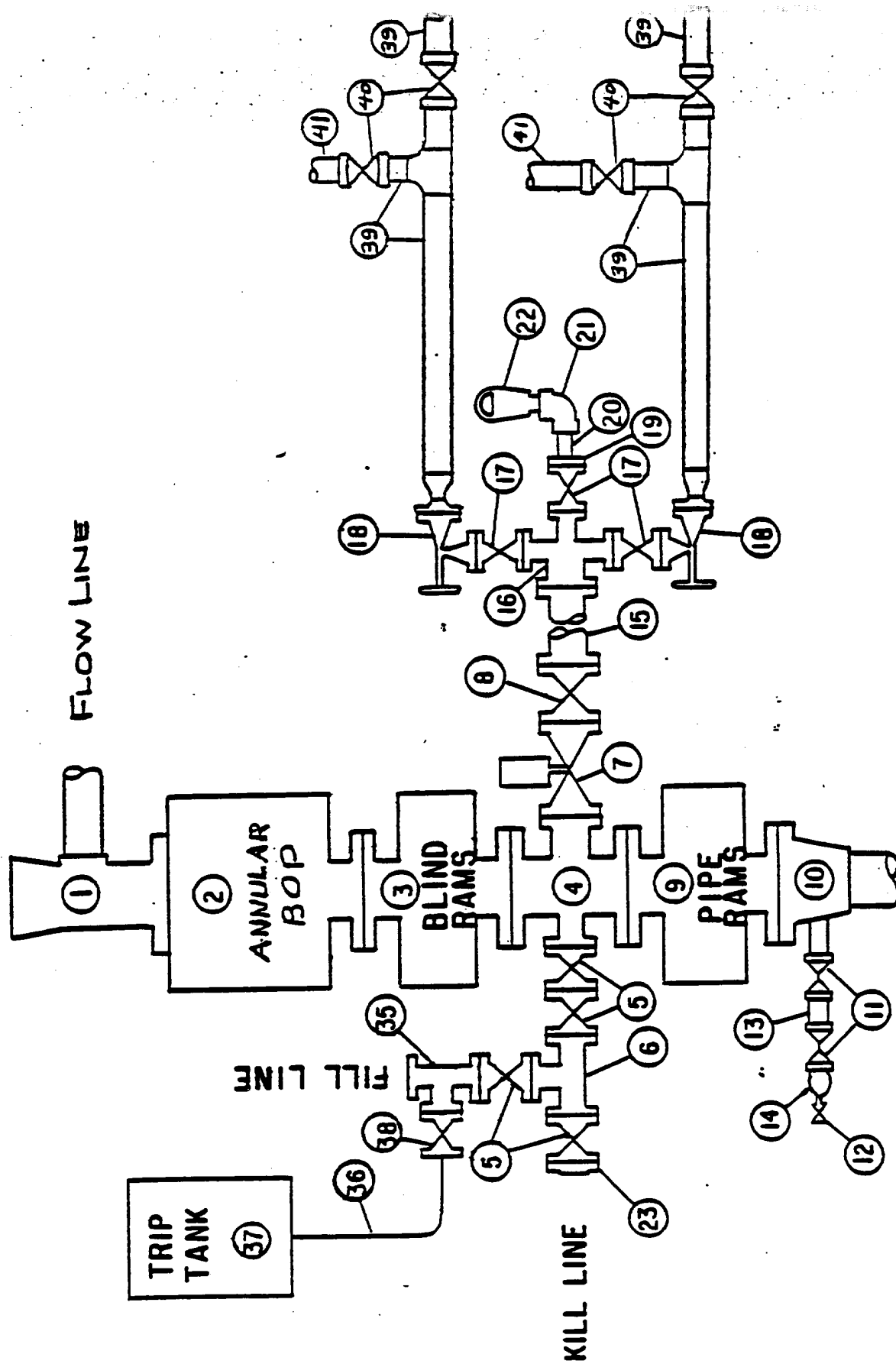
4. Proposed casing program:

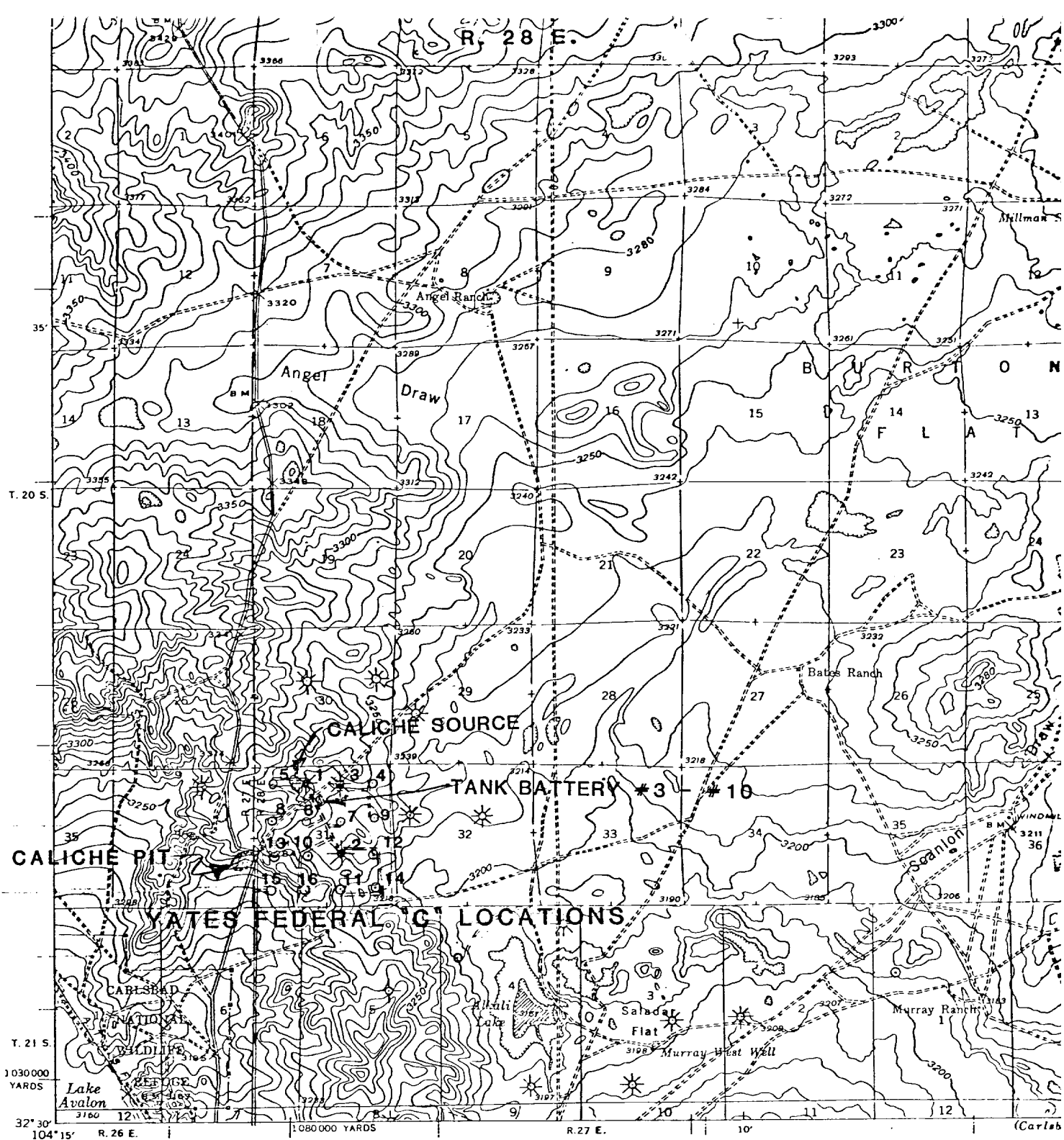
<u>STRING</u>	<u>SIZE</u>	<u>WEIGHT/GRADE</u>	<u>CONDITION</u>	<u>DEPTH INTERVAL</u>
Conductor	13-3/8"	54.5#/K-55	New	0- 40'
Surface	8-5/8"	24#/K-55	New	0- 600'
Production	5-1/2"	14#/K-55	New	0-4700'
Tubing	2-7/8"	6.5#/J-55	New	0-4600'

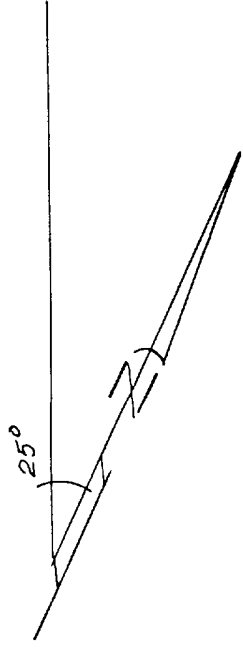
5. Minimum specifications for pressure control equipment:

- A. Wellhead equipment - Threaded type, 2000 psi WP for 8-5/8" x 5-1/2" casing program with 2-7/8" tubing hanger.
- B. Blowout preventers - Refer to attached drawings and lists of equipment titled "Type II-C" for description of BOP stacks and choke manifold.
- C. BOP control unit - Unit will be hydraulically operated and have at least two control stations.

MIDLAND DRILLING ORGANIZATION BLOWOUT PREVENTER SPECIFICATION TYPE II - C







1200' W.
+4.2'

200' N.

Ground

200' S.

Reserve Pit

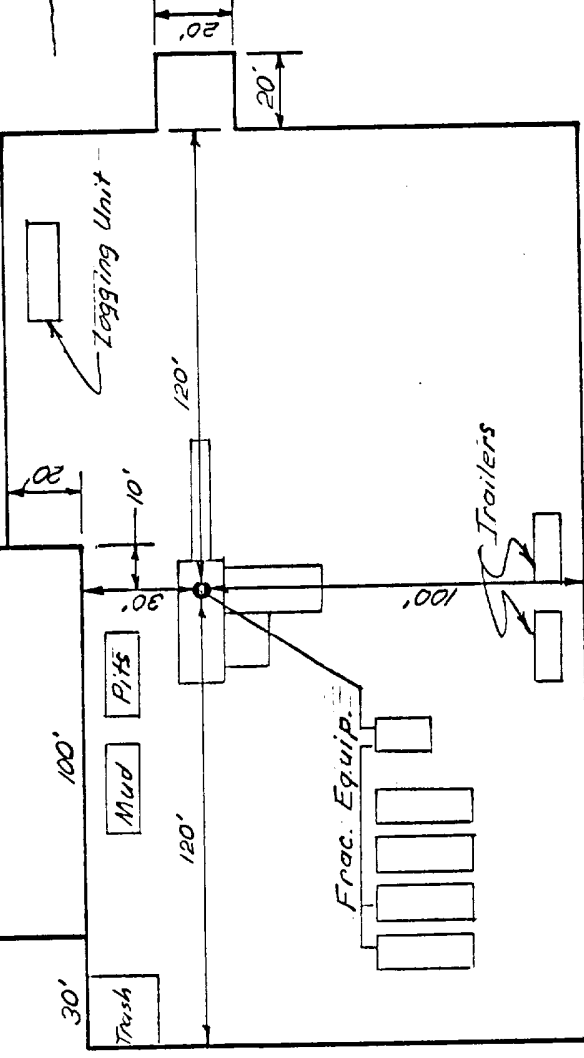
1200' S.
+0.4'

200' E.

elev. = 3248.1

200' W.

Ground



WELL SITE LAYOUT

SCALE: 1" = 50'

V-DOOR N 25° W

1200' E.
-3.5'

1200' N.
+1.5'

CROSS SECTIONS

SCALE: 1" = 50' Hor.
1" = 10' Vert.

EXHIBIT "B"

YATES FEDERAL "C" # 11		EXXON COMPANY, U.S.A. (a division of Exxon Corporation)	
SW/4 SE/4 SECTION 31, T20S, R28E		PRODUCTION DEPARTMENT	
BURTON FLAT		EDDY CO., NEW MEXICO	
DRAWN C.S. Smith	ENGR. SECTION Civil	DATE 12/14/82	FILE NO. WB-7968-A
CHECKED	APPROVED	JOB NO.	SCALE Shown