

GEOLOGICAL SURVEY

APPLICATION FOR PERMIT TO DRILL, DEEPEN, OR PLUG BACK

1a. TYPE OF WORK

DRILL ☒DEEPEN ☐PLUG BACK ☐

b. TYPE OF WELL

OIL
WELL ☒GAS
WELL ☐

OTHER

RECEIVED
SINGLE
ZONE ☒MULTIPLE
ZONE ☐

2. NAME OF OPERATOR

Exxon Corporation ✓

JAN 07 1983

3. ADDRESS OF OPERATOR

P. O. Box 1600, Midland, TX 79702

4. LOCATION OF WELL (Report location clearly and in accordance with any State requirements.)

At surface

660' FEL and 660' FSL of Section

At proposed prod. zone

14. DISTANCE IN MILES AND DIRECTION FROM NEAREST TOWN OR POST OFFICE*

6 miles N from Carlsbad

15. DISTANCE FROM PROPOSED*

LOCATION TO NEAREST

PROPERTY OR LEASE LINE, FT.

(Also to nearest drlg. unit line, if any) 660' drlg. line

16. NO. OF ACRES IN LEASE

2261.75

18. DISTANCE FROM PROPOSED LOCATION*

TO NEAREST WELL, DRILLING, COMPLETED,

OR APPLIED FOR, ON THIS LEASE, FT. 1320' N to #12

19. PROPOSED DEPTH

4700'

17. NO. OF ACRES ASSIGNED
TO THIS WELL

40

20. ROTARY OR CABLE TOOLS

Rotary

21. ELEVATIONS (Show whether DF, RT, GR, etc.)

3212.8 GR

22. APPROX. DATE WORK WILL START*

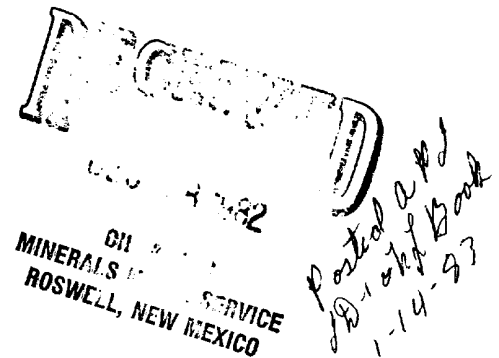
February 2, 1983

23.

PROPOSED CASING AND CEMENTING PROGRAM

SIZE OF HOLE	SIZE OF CASING	WEIGHT PER FOOT	SETTING DEPTH	QUANTITY OF CEMENT
17 1/2"	13 3/8"	54.5#	40'	21 sx CIRCULATE
12 1/4"	8 5/8"	24.0#	600'	280 sx CIRCULATE
7 7/8"	5 1/2"	14.0#	4700'	1800 sx CIRCULATE

Gas is not dedicated to a purchaser.



IN ABOVE SPACE DESCRIBE PROPOSED PROGRAM: If proposal is to deepen or plug back, give data on present productive zone and proposed new productive zone. If proposal is to drill or deepen directionally, give pertinent data on subsurface locations and measured and true vertical depths. Give blowout preventer program, if any.

24.

SIGNED

Melba Kripling

TITLE

Unit Head

DATE

December 22, 1982

(This space for Federal or State office use)

PERMIT NO.

APPROVED

APPROVAL DATE

APPROVED BY

(ORIG. SGD.) DAVID R. GLASS

TITLE

DATE

CONDITIONS OF APPROVAL, IF ANY:

JAN 6 1983

JAMES A. GILLHAM
DISTRICT SUPERVISOR

*See Instructions On Reverse Side

Exxon Lse. No. _____

State Lse. No. _____

Federal Lse. No. _____

NEW MEXICO OIL CONSERVATION COMMISSION

WELL LOCATION AND ACREAGE DEDICATION PLAT

All distances must be from the outer boundaries of the Section.

Form C-102
Supersedes C-128
Effective 1-1-65

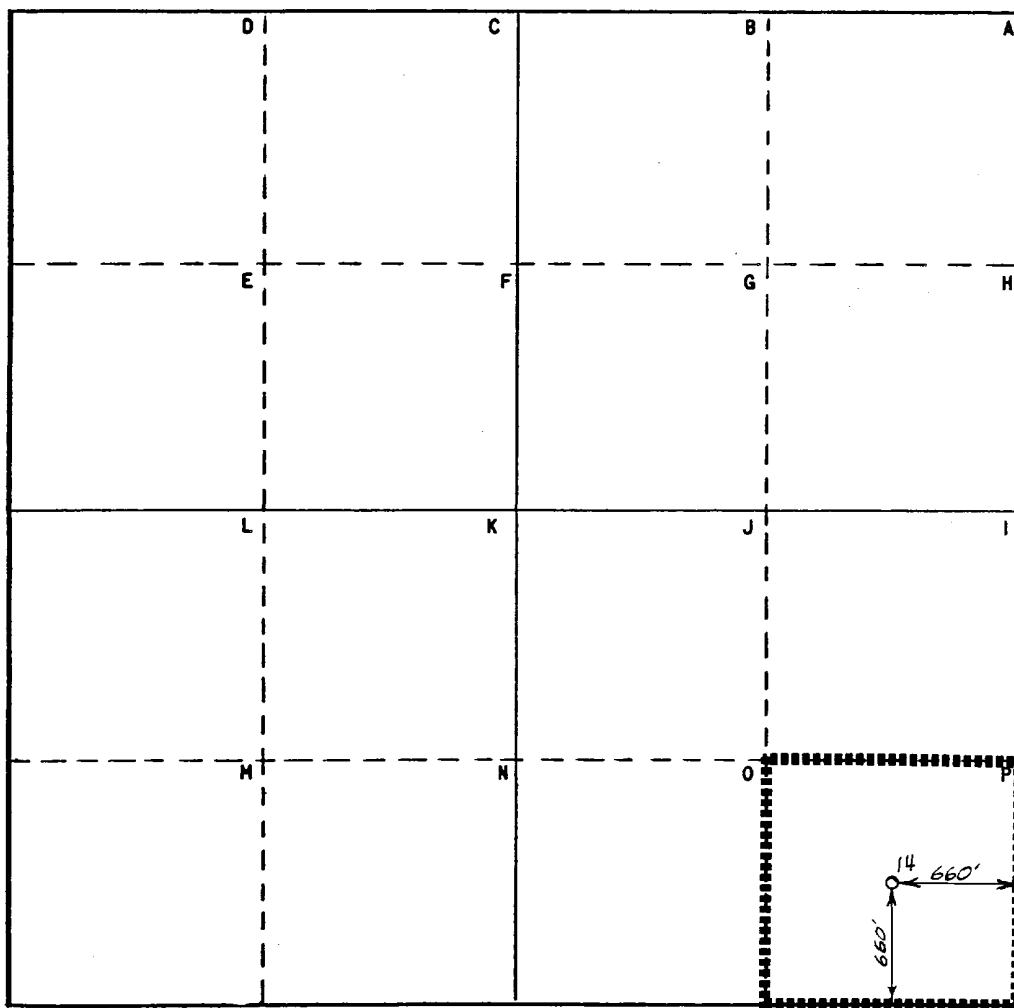
Operator Exxon Corporation			Lease Yates Federal B		Well No. 14
Unit Letter P	Section 31	Township 20 S	Range 28 E	County Eddy	
Actual Footage Location of Well: 660 feet from the East line and 660 feet from the South line					
Ground Level Elev: 3212.8	Producing Formation Delaware	Pool Undes. Burton Flat <i>Hydron Delaware</i>	Dedicated Acreage: 40 Acres		

1. Outline the acreage dedicated to the subject well by colored pencil or hachure marks on the plat below.
2. If more than one lease is dedicated to the well, outline each and identify the ownership thereof (both as to working interest and royalty).
3. If more than one lease of different ownership is dedicated to the well, have the interests of all owners been consolidated by communitization, unitization, force-pooling, etc?

☐ Yes ☐ No If answer is "yes," type of consolidation _____

If answer is "no," list the owners and tract descriptions which have actually been consolidated. (Use reverse side of this form if necessary.) _____

No allowable will be assigned to the well until all interests have been consolidated (by communitization, unitization, forced-pooling, or otherwise) or until a non-standard unit, eliminating such interests, has been approved by the Commission.



CERTIFICATION

I hereby certify that the information contained herein is true and complete to the best of my knowledge and belief.

Name *Edgar Runkel*
Position **UNIT HEAD**

Company Exxon Corporation
Box 1600 Midland, Texas

Date
12-21-82

I hereby certify that the well location shown on this plat was plotted from field notes of actual surveys made by me or under my supervision, and that the same is true and correct to the best of my knowledge and belief.

Date Surveyed
12-16-82

Registered Professional Engineer and/or Land Surveyor

W. J. Runkel
Certificate No.
6157

6 Miles N of CARLSBAD, New Mexico

C.E. Sec. File No. _____

EXXON CORPORATION
YATES FEDERAL "C" NO. 14
660' FSL, 660' FEL
Section 31, T20S, R28E
Eddy County, New Mexico
Federal Lease No. 01119

1. The geologic name of the surface formation: Recent.
2. The estimated tops of important geologic markers:

Salado	150'
Yates	600'
Seven Rivers	800'
Queen	1200'
Grayburg	1350'
San Andres	1500'
Delaware	2500'
Bone Spring	4700'

3. The estimated depths at which anticipated water, oil, gas, or other mineral bearing formations are expected to occur:

Water	60' - 150'
Oil	
Delaware	2500'
Bone Spring	4700'

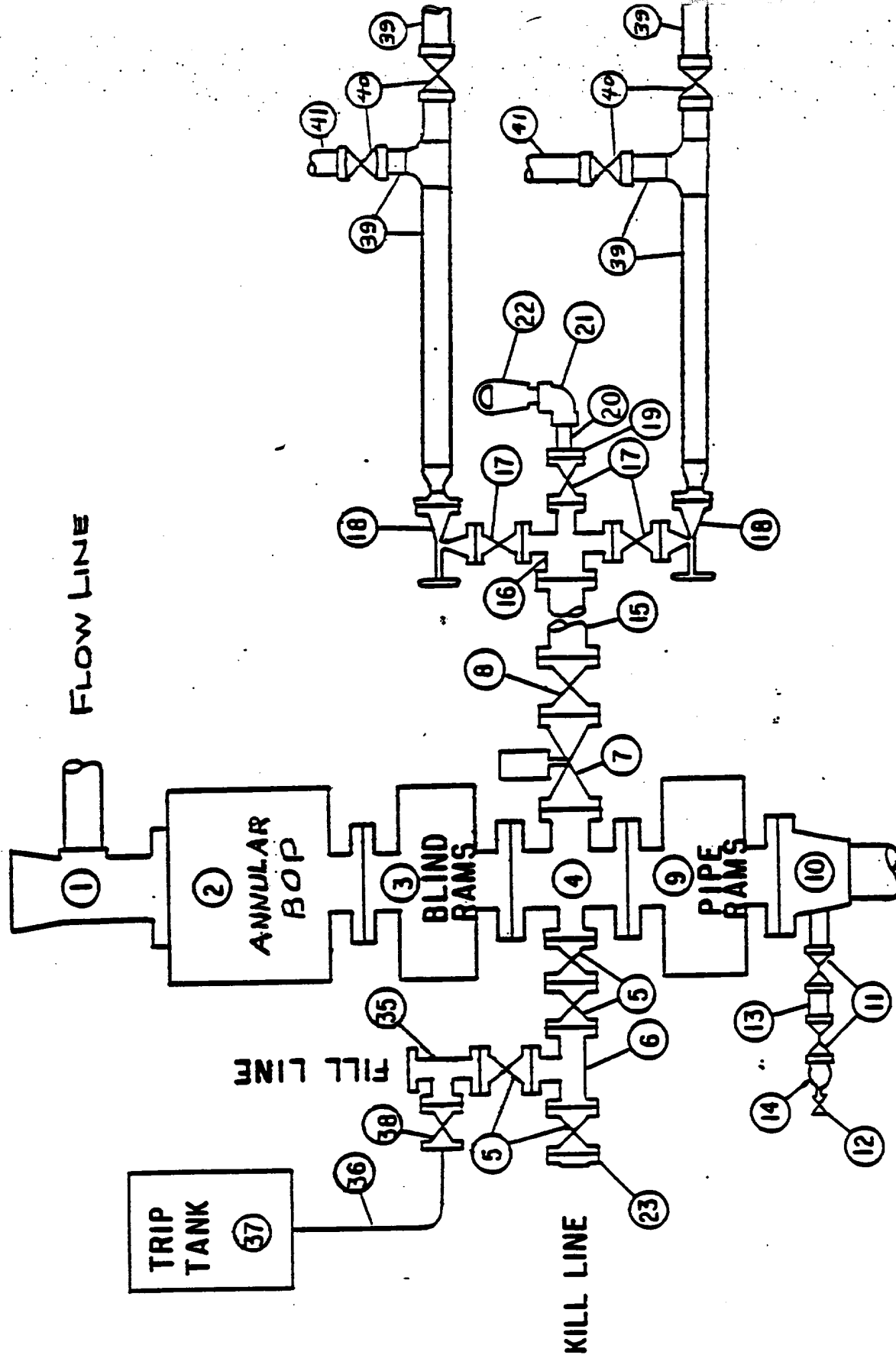
4. Proposed casing program:

<u>STRING</u>	<u>SIZE</u>	<u>WEIGHT/GRADE</u>	<u>CONDITION</u>	<u>DEPTH INTERVAL</u>
Conductor	13-3/8"	54.5#/K-55	New	0- 40'
Surface	8-5/8"	24#/K-55	New	0- 600'
Production	5-1/2"	14#/K-55	New	0-4700'
Tubing	2-7/8"	6.5#/J-55	New	0-4600'

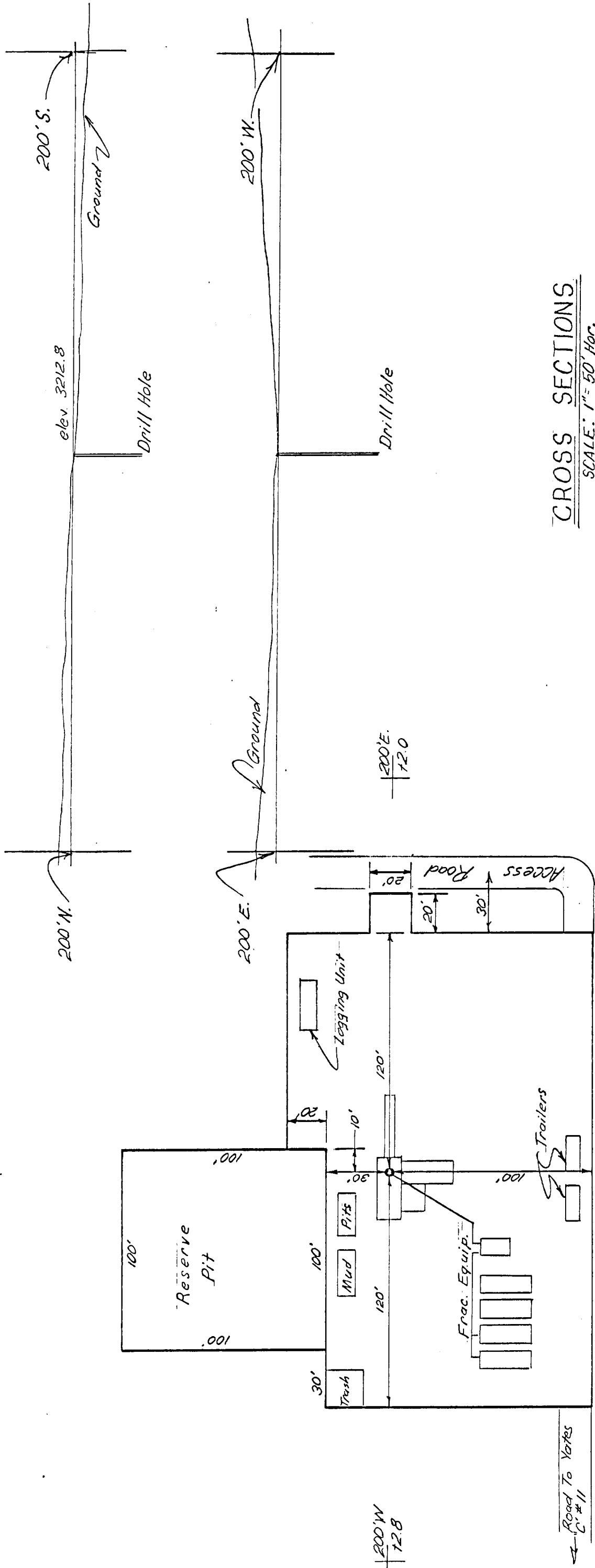
5. Minimum specifications for pressure control equipment:

- A. Wellhead equipment - Threaded type, 2000 psi WP for 8-5/8" x 5-1/2" casing program with 2-7/8" tubing hanger.
- B. Blowout preventers - Refer to attached drawings and lists of equipment titled "Type II-C" for description of BOP stacks and choke manifold.
- C. BOP control unit - Unit will be hydraulically operated and have at least two control stations.

MIDLAND DRILLING ORGANIZATION BLOWOUT PREVENTER SPECIFICATION TYPE II - C



200' N.
+1.5



WELL SITE LAYOUT
SCALE: 1"=50'

V-DOOR EAST

200' S.
-1.1

CROSS SECTIONS
SCALE: 1"=50' Hor.
1"=10' Vert.

EXHIBIT "B"

YATES-FEDERAL "C" #14 SE/4 SE/4 SECTION 31, T20S, R28E BURTON FLAT EDDY CO., NEW MEXICO		EXXON COMPANY, U.S.A. (a division of Exxon Corporation) PRODUCTION DEPARTMENT	
DRAWN: C.S. Smith	ENGR. SECTION: Civil	DATE: 12/14/82	FILE NO.: WB-7968-D
CHECKED:	APPROVED:	JOB NO.:	SCALE: Shown