

NM OIL & GAS COMMISSION
Drawer DD
Artesia, NM 88210
UNITED STATES
DEPARTMENT OF THE INTERIOR
GEOLOGICAL SURVEYSUBMIT IN 1 PLICATE*
(Other instructions on
reverse side)Form approved.
Budget Bureau No. 42-R1425.

50-015-24421

c/SF

APPLICATION FOR PERMIT TO DRILL, DEEPEN, OR PLUG BACK

1a. TYPE OF WORK

DRILL ☒DEEPEN ☐PLUG BACK ☐

b. TYPE OF WELL

OIL
WELL ☒GAS
WELL ☐OTHER ☐

FEB 14 1983

SINGLE
ZONE ☒MULTIPLE
ZONE ☐

2. NAME OF OPERATOR

Liberty Oil & Gas Co. ✓

O.C.D.

3. ADDRESS OF OPERATOR

1776 Woodstead Ct. Suite 200, The Woodlands, Tx 77380

ARTESIA, OFFICE

4. LOCATION OF WELL (Report location clearly and in accordance with any State requirements.)*

At surface

1980' N & 1780' E SW/4 NE/4

At proposed prod. zone

Same

14. DISTANCE IN MILES AND DIRECTION FROM NEAREST TOWN OR POST OFFICE*

7 1/2 miles northeast of Carlsbad, N.M.

15. DISTANCE FROM PROPOSED*

LOCATION TO NEAREST

PROPERTY OR LEASE LINE, FT.

(Also to nearest drig. unit line, if any)

1780' E

16. NO. OF ACRES IN LEASE

560

17. NO. OF ACRES ASSIGNED
TO THIS WELL

40

18. DISTANCE FROM PROPOSED LOCATION*

TO NEAREST WELL, DRILLING, COMPLETED,
OR APPLIED FOR, ON THIS LEASE, FT.

200' E

19. PROPOSED DEPTH

1400'

20. ROTARY OR CABLE TOOLS

Cable tools

21. ELEVATIONS (Show whether DF, RT, GR, etc.)

3239.9' GR

22. APPROX. DATE WORK WILL START*

Feb. 11, 1983

23.

PROPOSED CASING AND CEMENTING PROGRAM

SIZE OF HOLE	SIZE OF CASING	WEIGHT PER FOOT	SETTING DEPTH	QUANTITY OF CEMENT
12" 13"	10 3/4"	32.75#	250' ±	50 sx Circulate
7 7/8"	5 1/2"	13.00#	1400' ±	100 sx Circulate

Proposed plans are to drill the Yates and Seven Rivers formations and test for possible commercial oil zones.

Postcard ID 1
New for +
API
2-18-83

RECEIVED
FEB 9 1983OIL & GAS
U.S. GEOLOGICAL SURVEY
ROSWELL, NEW MEXICO

IN ABOVE SPACE DESCRIBE PROPOSED PROGRAM: If proposal is to deepen or plug back, give data on present productive zone and proposed new productive zone. If proposal is to drill or deepen directionally, give pertinent data on subsurface locations and measured and true vertical depths. Give blowout preventer program, if any.

24.

SIGNED

Jerry W. Franklin

TITLE

AGENT

DATE

2/9/83

(This space for Federal or State office use)

PERMIT NO.

APPROVED

APPROVAL DATE

APPROVED BY

CONDITIONS OF APPROVAL, IF ANY

TITLE

DATE

FEB 10 1983
JAMES A. GILLHAM
DISTRICT SUPERVISOR

**NEW MEXICO OIL CONSERVATION COMMISSION
WELL LOCATION AND ACREAGE DEDICATION PLAT**

Form C-102
Supersedes C-128
Effective 1-1-65

All distances must be from the outer boundaries of the Section

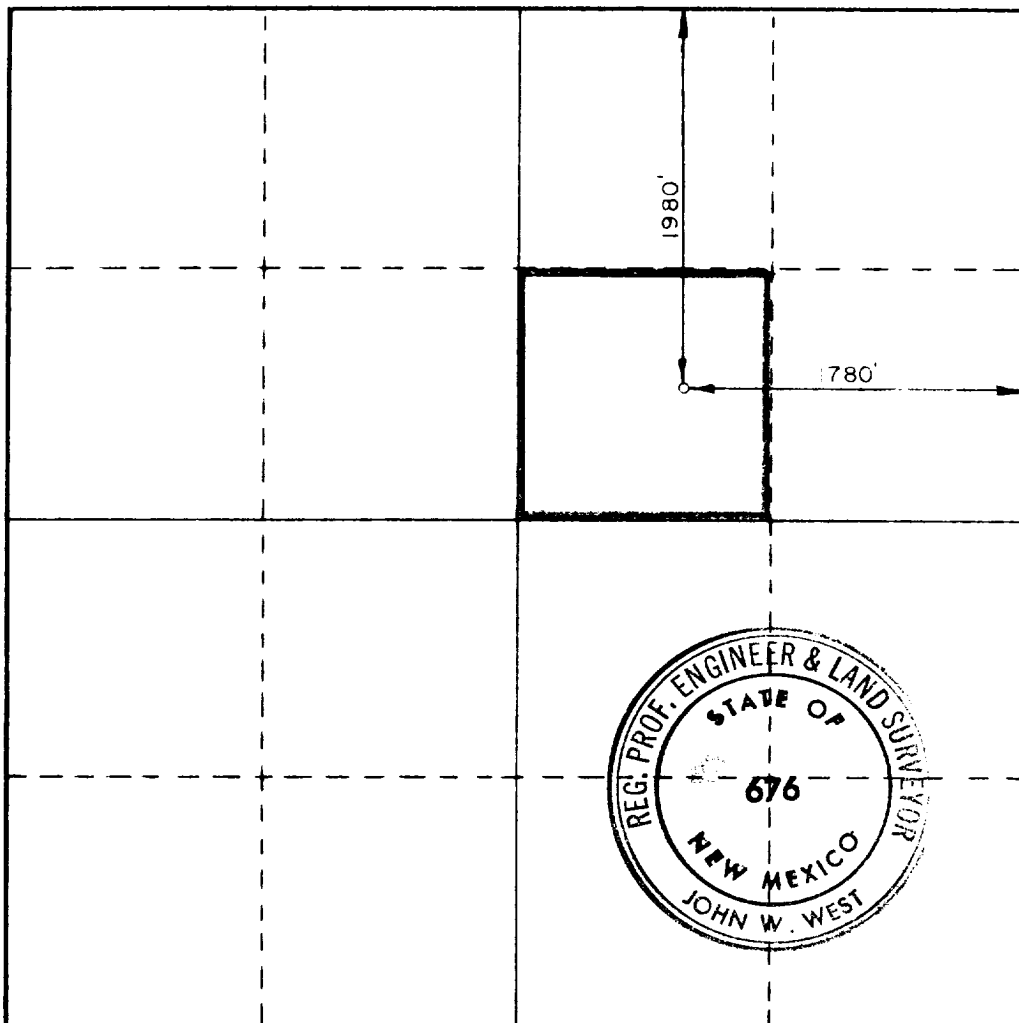
Operator LIBERTY OIL & GAS CO.			Lease LEE FEDERAL		Well No. NO. 3
Unit Letter G	Section 25	Township 20 SOUTH	Range 28 EAST	County EDDY	
Actual Footage Location of Well:					
1980 feet from the NORTH line and		1780 feet from the EAST line			
Ground Level Elev. 3239.9	Producing Formation Yates	Pool Wildcat And Russell Yates	Dedicated Acreage: 40 Acres		

1. Outline the acreage dedicated to the subject well by colored pencil or hatchure marks on the plat below.
2. If more than one lease is dedicated to the well, outline each and identify the ownership thereof (both as to working interest and royalty).
3. If more than one lease of different ownership is dedicated to the well, have the interests of all owners been consolidated by communitization, unitization, force-pooling, etc?

☐ Yes ☐ No If answer is "yes," type of consolidation _____

If answer is "no," list the owners and tract descriptions which have actually been consolidated. (Use reverse side of this form if necessary.) _____

No allowable will be assigned to the well until all interests have been consolidated (by communitization, unitization, forced-pooling, or otherwise) or until a non-standard unit, eliminating such interests, has been approved by the Commission.



CERTIFICATION

I hereby certify that the information contained herein is true and complete to the best of my knowledge and belief.

Name Leery W. Franklin
Position _____

AGENT

Company _____

LIBERTY OIL & GAS

Date _____

2/9/83

I hereby certify that the well location shown on this plat was plotted from field notes of actual surveys made by me or under my supervision, and that the same is true and correct to the best of my knowledge and belief.

Date Surveyed _____

FEBRUARY 7 1983

Registered Professional Engineer and/or Land Surveyor

John W. West
Certificate No. _____

JOHN W. WEST NO 676



APPLICATION TO DRILL

Liberty Oil & Gas
Lee Federal No. 3
1980' FNL & 1780' FEL
Sec. 25, T20S, R28E
Eddy County, N.M.

NM-17103

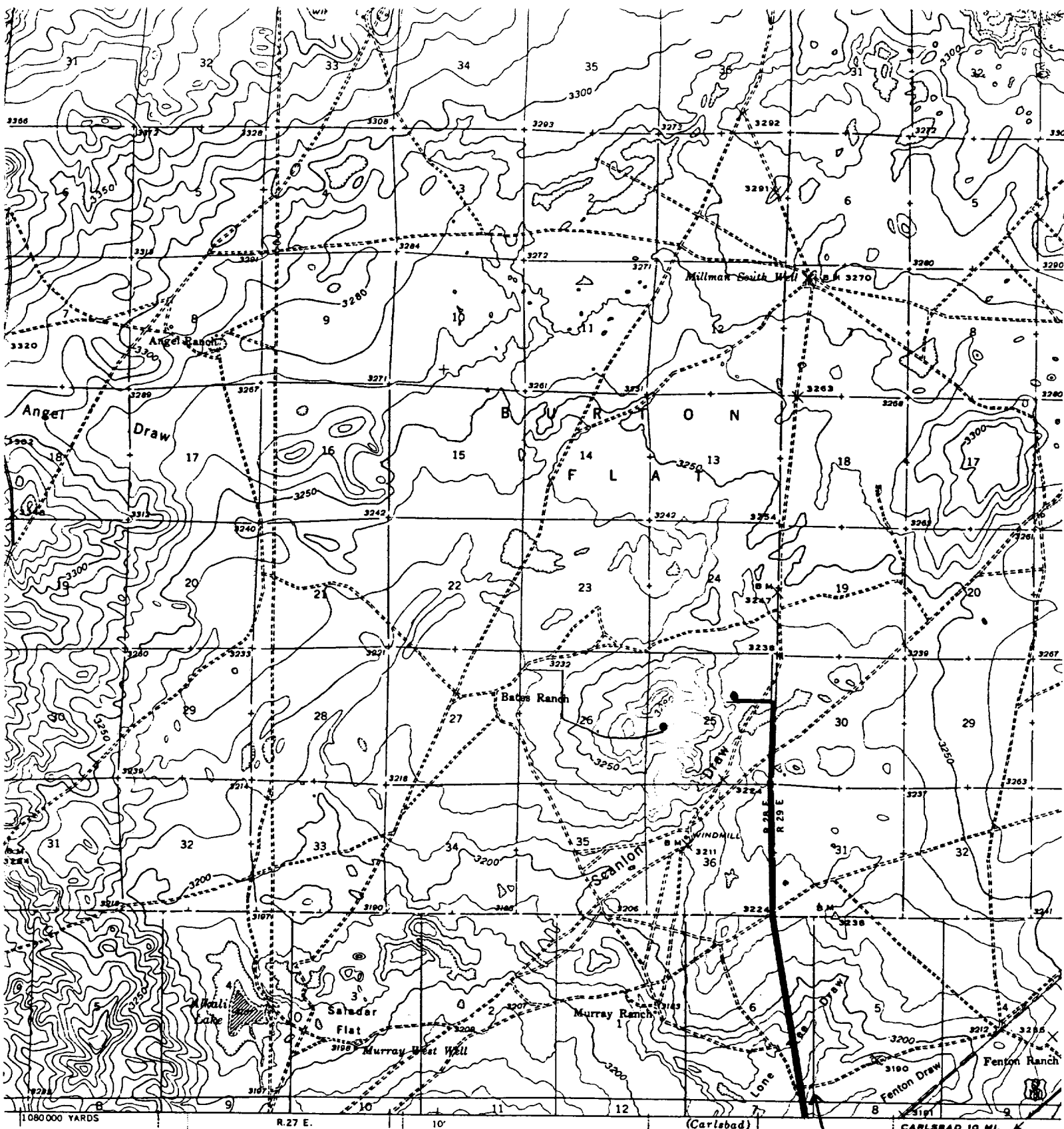
The following items supplement Form 9-331C in accordance with instructions contained in NTL-6:

1. Geologic Name of Surface Formation: Aeolian
2. Drilling Tools and Associated Equipment: Cable tool rig.
3. Proposed Drilling Depth: 1400'±
4. Estimated Geological Marker Tops:

Rustler	190'
Salt	385'
Yates	880'
7 Rivers	1195'
5. Mineral Bearing Formations: Water @ 205'
Oil bearing @ 940'
6. Casing Program:

10 3/4" Casing - Set approximately 250' of 10 3/4", 32.75#, ST&C casing. Cement with 50 sx of cement to surface.

5 1/2" Casing - Set 5 1/2", 13.0#, ST&C casing to total depth. Cement to surface using 100 sx of cement.
7. Pressure Control Equipment: No pressure control needed.
8. Proposed Mud Program: No mud program needed due to the use of cable tool drilling. Will use minimum amount of water throughout the hole.

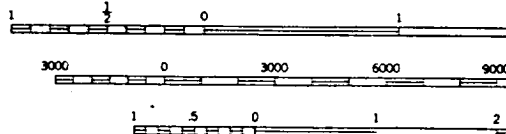


S. T. Penick,
er

ION

DRY WEATHER ROADS
approved dirt
improved dirt
d-surface - - -
State Route

TRUE NORTH
MAGNETIC NORTH
APPROXIMATE MEAN
DECLINATION, 1938



Contour Inter
Datum is mean

Exhibit 'B'
Liberty Oil & Gas
Lee Federal No. 3
1980' FNL & 1780' FEL
Sec. 25, T20S, R28E
Eddy County, N.M.

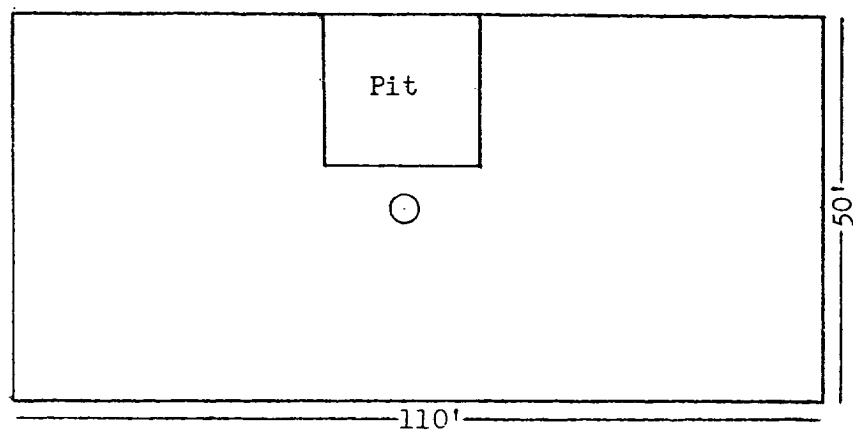


Exhibit 'C'
Liberty Oil & Gas
Lee Federal No. 3
1980' FNL & 1780' FEL
Sec. 25, T20S, R28E
Eddy County, N.M.