

NM OIL CO COMMISSION  
Drawn <sup>PP</sup>  
Artesia, NM 88210  
UNITED STATES  
DEPARTMENT OF THE INTERIOR  
GEOLOGICAL SURVEY

**SUNDRY NOTICES AND REPORTS ON WELLS**

(Do not use this form for proposals to drill or to deepen or plug back to a different reservoir. Use Form 9-331-C for such proposals.)

1. oil ☐ gas ☐ other Drilling Well

2. NAME OF OPERATOR

Liberty Oil & Gas

3. ADDRESS OF OPERATOR

Tx. 77380  
1776 Woodstead Ct., Suite 200, The Woodlands,

4. LOCATION OF WELL (REPORT LOCATION CLEARLY. See space 17 below.)

AT SURFACE: 1975' FNL & 1765' FEL

AT TOP PROD. INTERVAL:

AT TOTAL DEPTH: Same

16. CHECK APPROPRIATE BOX TO INDICATE NATURE OF NOTICE, REPORT, OR OTHER DATA

REQUEST FOR APPROVAL TO:

SUBSEQUENT REPORT OF:

TEST WATER SHUT-OFF ☐

FRACTURE TREAT ☐

SHOOT OR ACIDIZE ☐

REPAIR WELL ☐

PULL OR ALTER CASING ☐

MULTIPLE COMPLETE ☐

CHANGE ZONES ☐

ABANDON\* ☐

(other) Change drill location

17. DESCRIBE PROPOSED OR COMPLETED OPERATIONS (Clearly state all pertinent details, and give pertinent dates, including estimated date of starting any proposed work. If well is directionally drilled, give subsurface locations and measured and true vertical depths for all markers and zones pertinent to this work.)\*

Request approval to move drill location from 1980' FNL & 1780' FEL to 1975' FNL & 1765' FEL. Need to move and start new drill hole due to crooked hole on original location. Approximate 5 degree deviation at a total depth of 190'.

Plans are to move cable tool rig over to new drill location and use cuttings from the new hole to fill up the deviated hole. No fresh water was encountered in crooked hole as of the total depth of 190'.

Subsurface Safety Valve: Manu. and Type \_\_\_\_\_

Set @ \_\_\_\_\_

Ft.

18. I hereby certify that the foregoing is true and correct

SIGNED Henry W. Menden

TITLE

Agent

DATE

2/27/83

**APPROVED**

(This space for Federal or State office use)

(Orig. Sgd.)

GEORGE H. STEWART

APPROVED BY

DATE

CONDITIONS OF APPROVAL, IF ANY:

**FEB 28 1983**

FOR

**JAMES A. GILLHAM**  
DISTRICT SUPERVISOR

\*See Instructions on Reverse Side

5. LEASE NM-17103
6. IF INDIAN, ALLOTTEE OR TRIBE NAME
7. UNIT AGREEMENT NAME
8. FARM OR LEASE NAME Lee Federal
9. WELL NO. 3
10. FIELD OR WILDCAT NAME Wildcat Yates
11. SEC., T., R., M., OR BLK. AND SURVEY OR AREA Sec. 25, T20S, R28E
12. COUNTY OR PARISH Eddy
13. STATE N.M.
14. API NO.
15. ELEVATIONS (SHOW DF, KDB, AND WD) 3239.9' GR

(NOTE: Report results of multiple completion or zone change on Form 9-330.)

Posted 2-28-83  
Chg. well  
Chg. O.K.

NEW MEXICO OIL CONSERVATION COMMISSION  
WELL LOCATION AND ACREAGE DEDICATION PLAT

Form C-102  
Supersedes C-128  
Effective 1-1-65

All distances must be from the outer boundaries of the Section

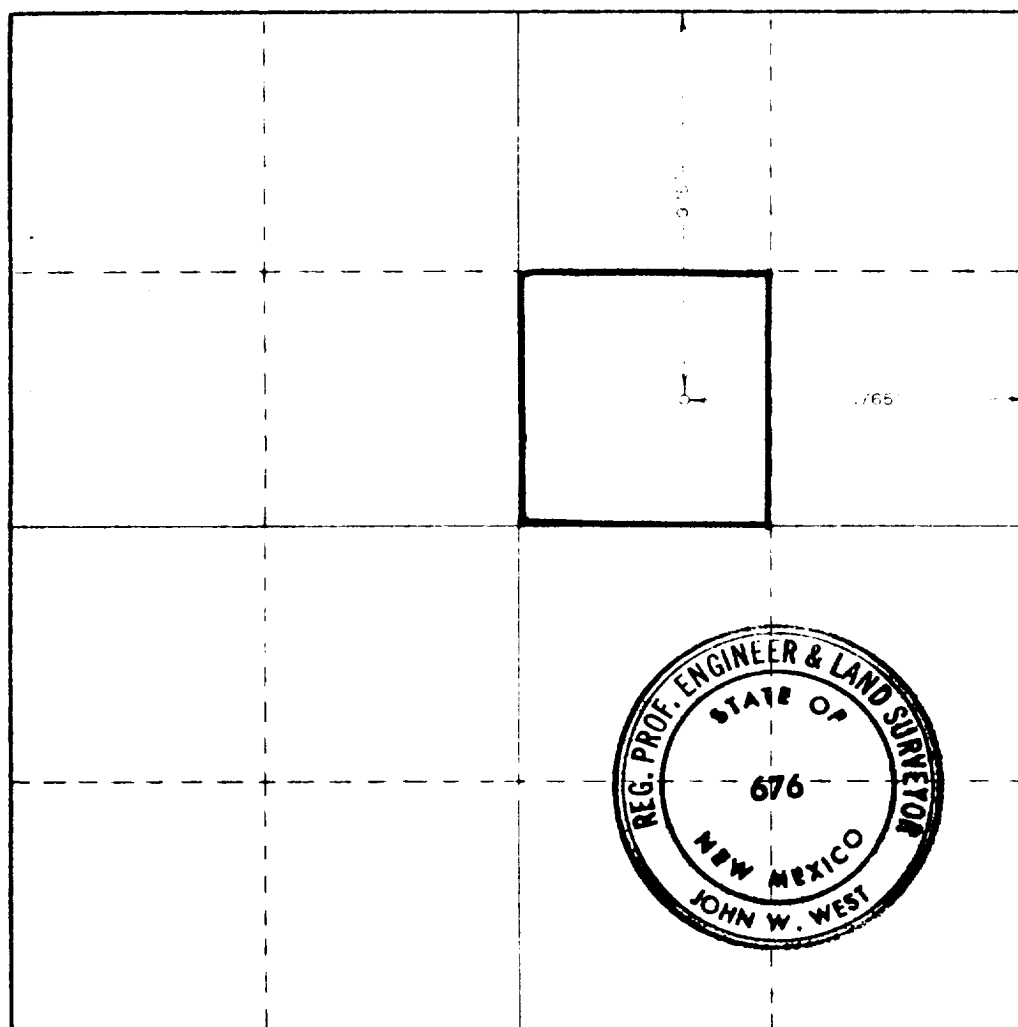
Operator <b>LIBERTY OIL AND GAS COMPANY</b>			Lease <b>LEE FEDERAL</b>		Well No. <b>3</b>
Tract Letter <b>G</b>	Section <b>25</b>	Township <b>20 SOUTH</b>	Range <b>28 EAST</b>	County <b>EDDY</b>	
Actual Footage Location of Well:					
<b>1975</b> feet from the <b>NORTH</b> line and		<b>1765</b> feet from the <b>EAST</b> line			
Ground Level Elev. <b>3239.9</b>	Producing Formation <b>Yates</b>		Pool <b>Wildcat</b>	Dedicated Acreage: <b>40</b> Acres	

- Outline the acreage dedicated to the subject well by colored pencil or hatchure marks on the plat below.
- If more than one lease is dedicated to the well, outline each and identify the ownership thereof (both as to working interest and royalty).
- If more than one lease of different ownership is dedicated to the well, have the interests of all owners been consolidated by communitization, unitization, force-pooling, etc?

☐ Yes ☐ No If answer is "yes," type of consolidation \_\_\_\_\_

If answer is "no," list the owners and tract descriptions which have actually been consolidated (Use reverse side of this form if necessary.) \_\_\_\_\_

No allowable will be assigned to the well until all interests have been consolidated (by communitization, unitization, forced-pooling, or otherwise) or until a non-standard unit, eliminating such interests, has been approved by the Commission.



**CERTIFICATION**

I hereby certify that the information contained herein is true and complete to the best of my knowledge and belief.

*John W. Franklin*  
AGENT

LIBERTY OIL & GAS  
Date: **2/27/83**

I hereby certify that the well location shown on this plat was plotted from field notes of actual surveys made by me or under my supervision, and that the same is true and correct to the best of my knowledge and belief.

Date Surveyed: **2/24/83**

Registered Professional Engineer and Land Surveyor

*John W. West*

Certificate No  
**JOHN W. WEST NO. 676**

